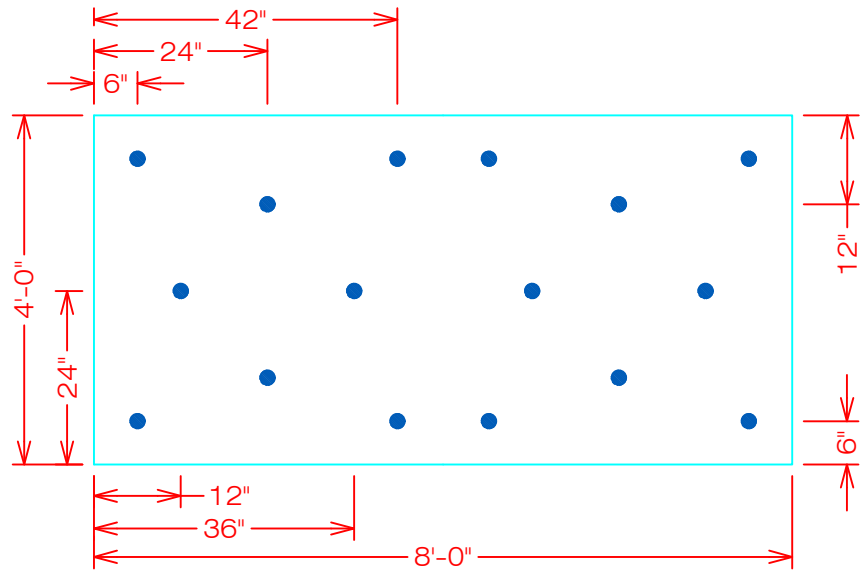
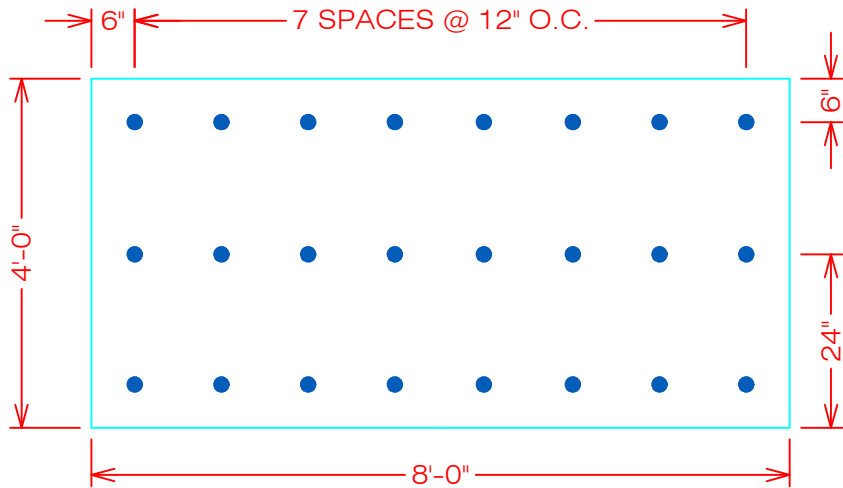


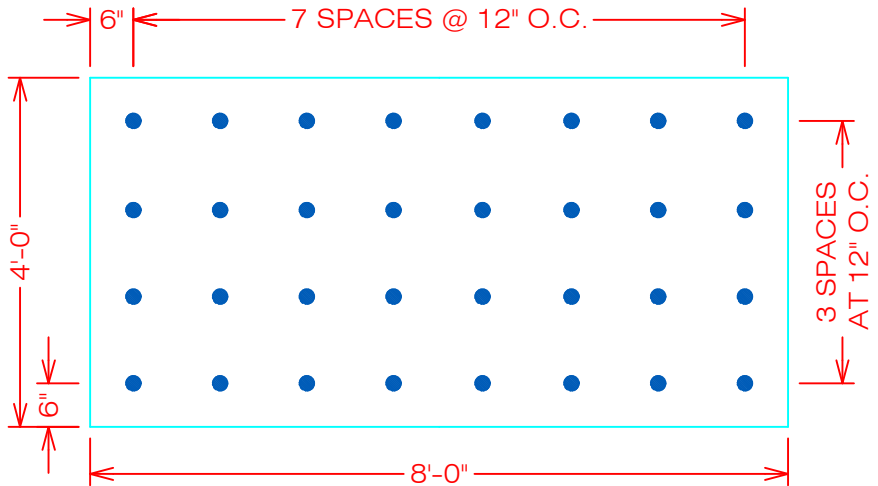
16 FASTENERS PER BOARD



24 FASTENERS PER BOARD



32 FASTENERS PER BOARD



GENERAL REFERENCE:  
 "FTR GS 02/13"  
 APPLICABLE SYSTEMS:  
 "FTR AD 02/13"

INSULATION/COVERBOARD  
 ATTACHMENT PATTERN

REVISES DETAIL	ISSUE DATE	DRAWING NUMBER
ALL PREVIOUS	08/15/17	FTR-Di6