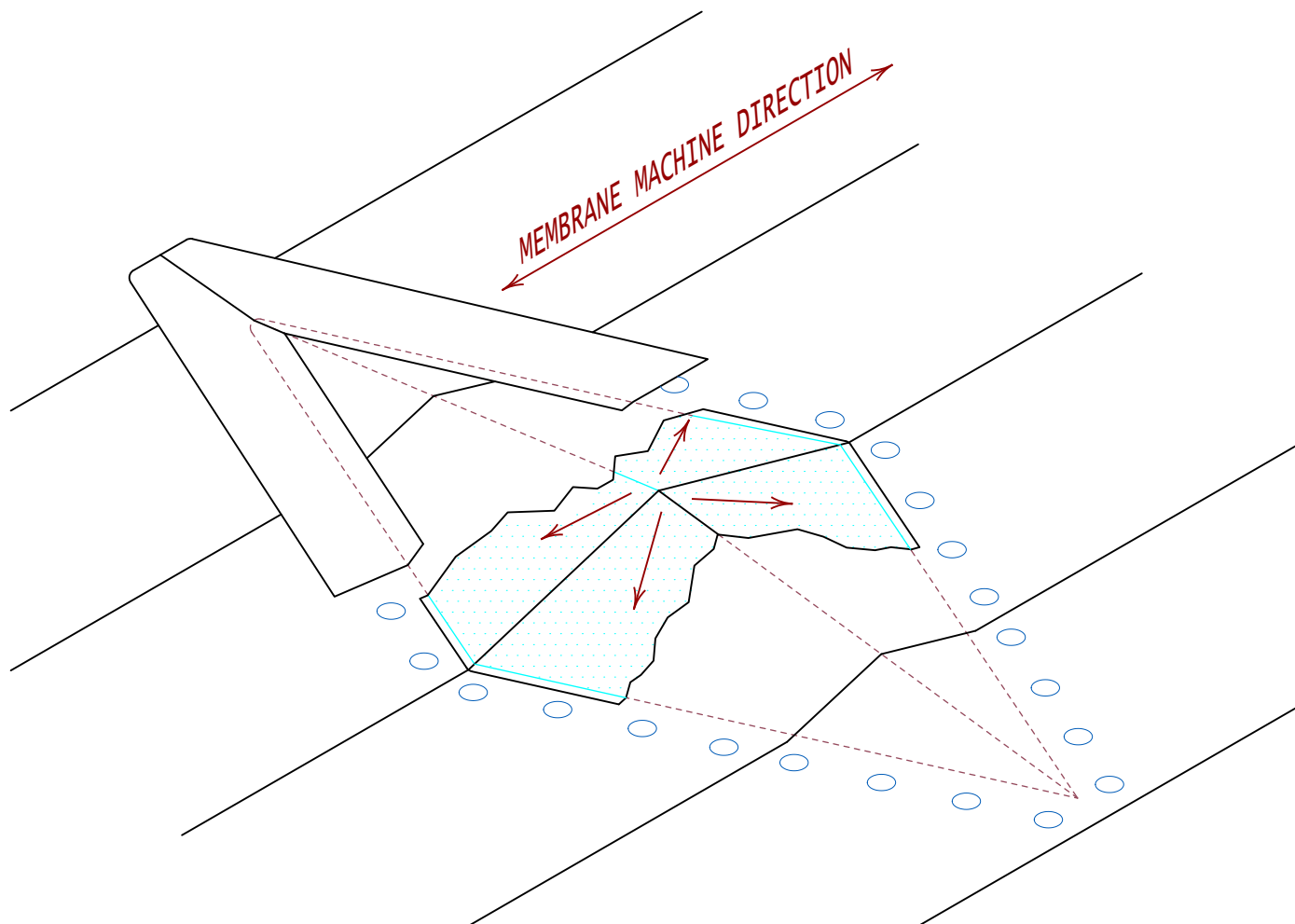
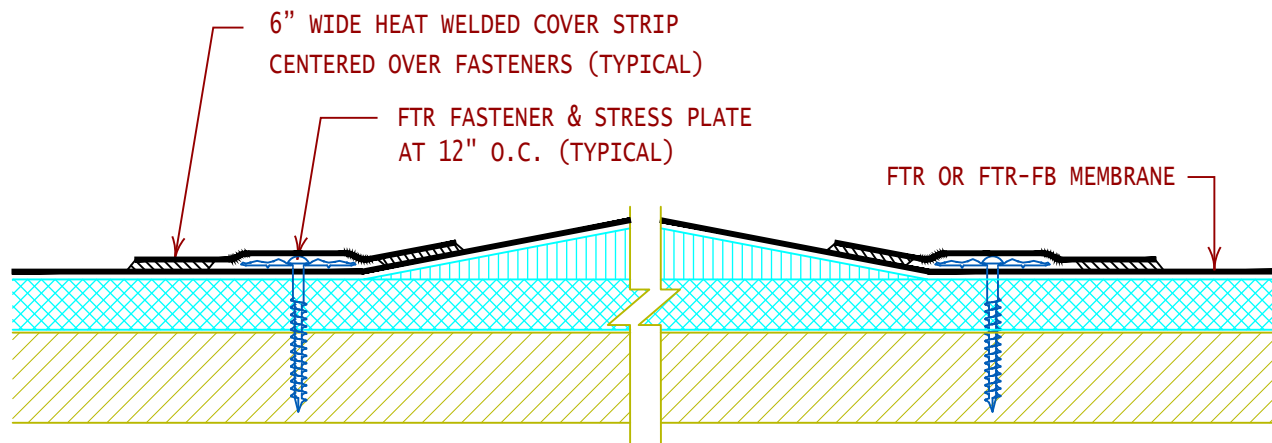


NOTE: ROOFING SYSTEMS SHALL BE MECHANICALLY ATTACHED AT ALL TRANSITIONS IN PLANE/SLOPE GREATER THAN 1/4" PER LINEAR FOOT TO ELIMINATE POTENTIAL BRIDGING OF THE MEMBRANE.



GENERAL REFERENCE:  
"FTR GS 02/13"  
APPLICABLE SYSTEMS:  
"FTR MA 02/13"  
"FTR AD 02/13"  
"FTR BA 02/13"

ROOF SYSTEM ATTACHMENT AT SLOPE  
TRANSITION AND CHANGE IN PLANE

REVISES DETAIL	ISSUE DATE	DRAWING NUMBER
ALL PREVIOUS	11/05/15	FTR-ST2