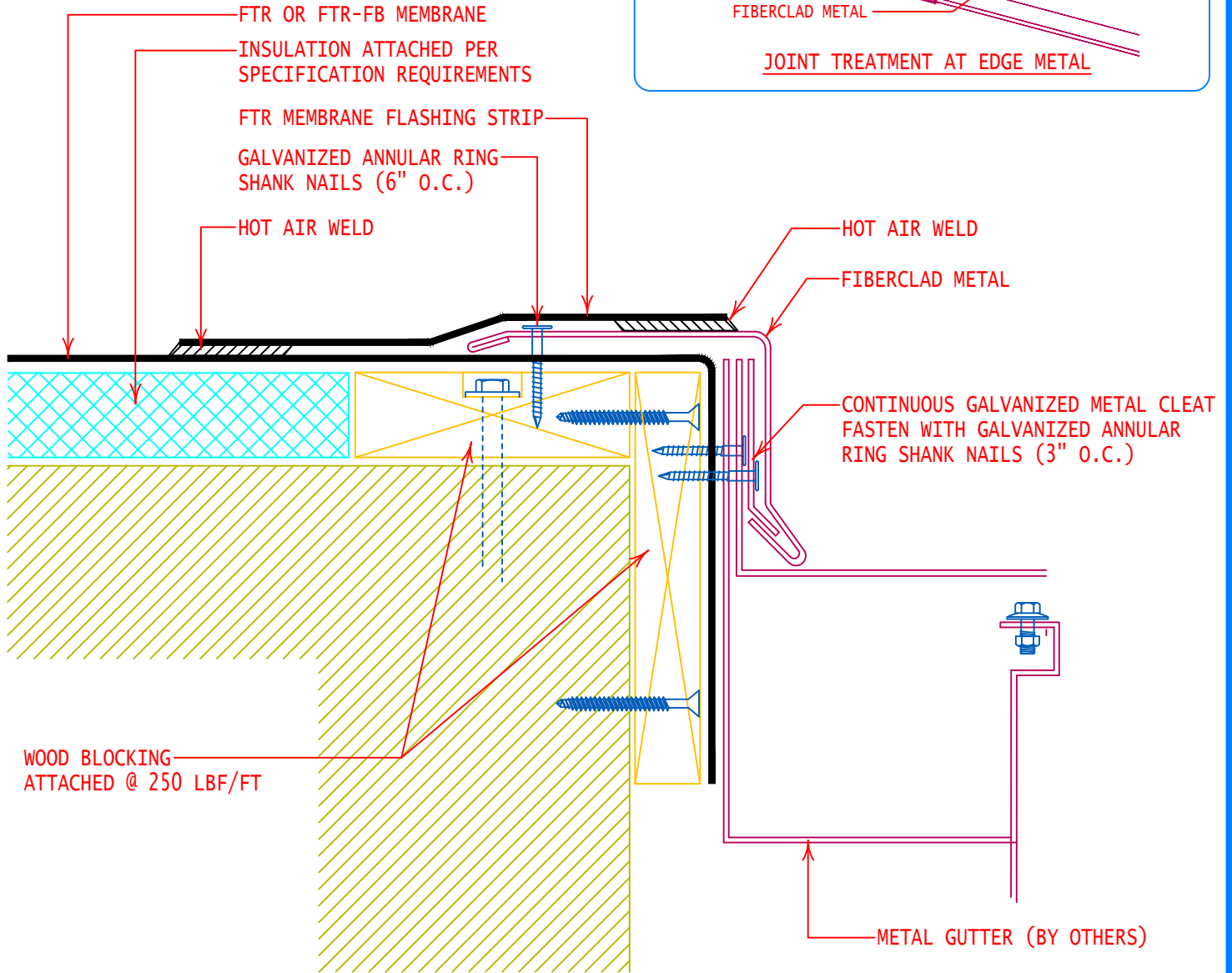
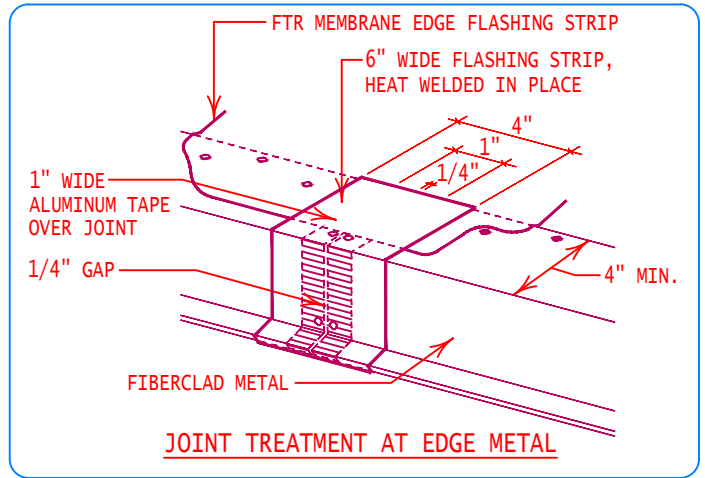


**NOTE: JOINING OF EDGE METAL PIECES**

1. INSTALL METAL CORRECTLY
2. APPLY 1" WIDE ALUMINUM TAPE OVER JOINT GAP
3. WELD IN MEMBRANE EDGE FLASHING STRIP ONTO METAL AND THE ROOF MEMBRANE.
4. WELD IN 4-6" WIDE FLASHING STRIP OVER TAPE COVERED JOINT GAP ON THE EDGE FLASHING STRIP



GENERAL REFERENCE:  
 "FTR GS 01/21"  
 APPLICABLE SYSTEMS:  
 "FTR MA 01/21"  
 "FTR AD 01/21"

**GUTTER FLASHING**

REVISES DETAIL	ISSUE DATE	DRAWING NUMBER
ALL PREVIOUS	02-10-14	FTR-DE3