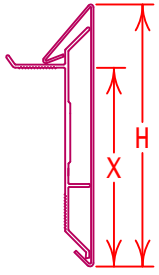
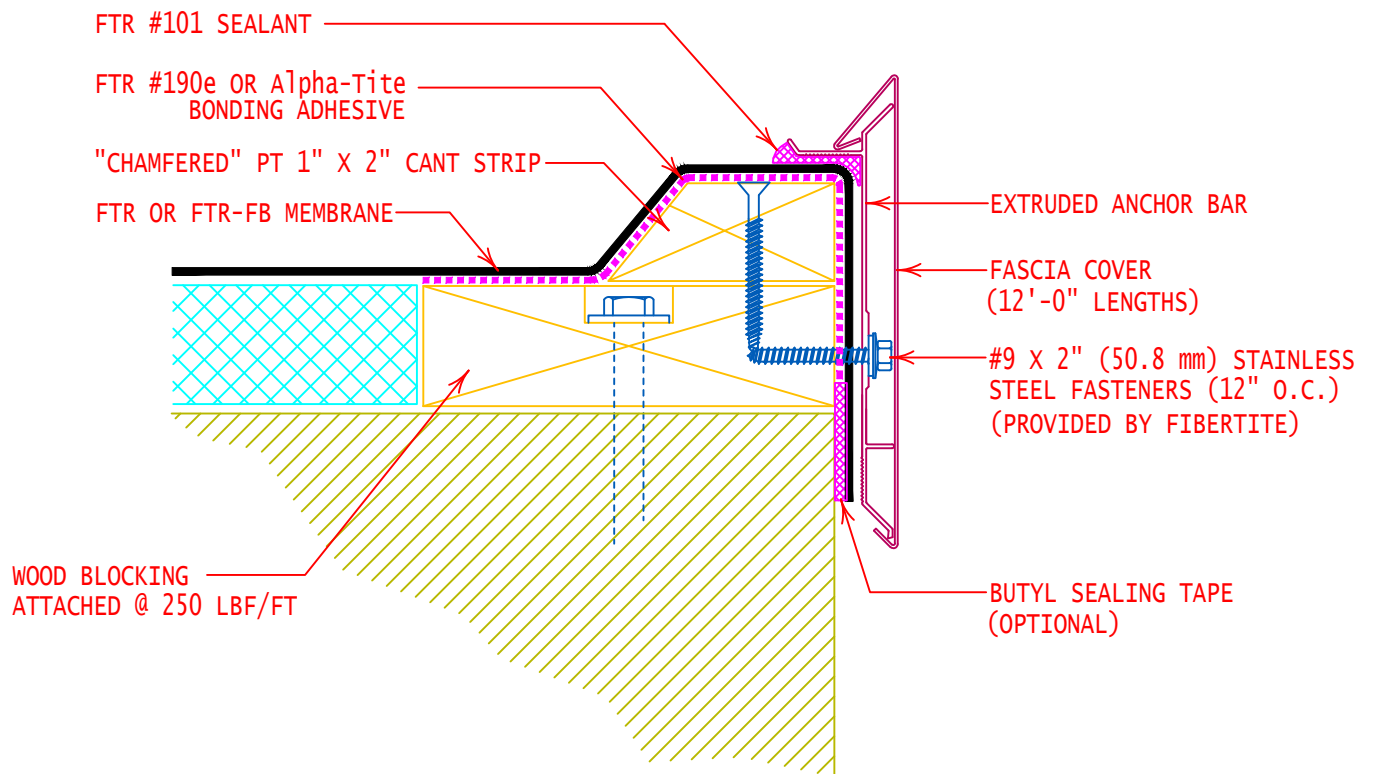


FIBERTITE AT FASCIA SYSTEM (STANDARD FASCIA)			
PRODUCT ID. NO.	H DIMENSION	X DIMENSION	NAILER COVERAGE
F-2040	4" (101.6 mm)	2-3/4" (69.9 mm)	1 NAILER
F-2055	5-1/2" (139.7 mm)	4-1/2" (108.0 mm)	2 NAILERS
F-2070	7" (177.8 mm)	5-3/4" (146.0 mm)	3 NAILERS
F-2085	8-1/2" (215.9 mm)	7-1/4" (184.2 mm)	4 NAILERS

FM APPROVED 1-645 / MIAMI DADE APPROVED



NOTE:  
 INSTALL PRE-MANUFACTURED EDGE SYSTEM PER SPECIFICATIONS AND FIBERTITE'S INSTALLATION REQUIREMENTS



GENERAL REFERENCE:

"FTR GS 01/21"

APPLICABLE SYSTEMS:

"FTR MA 01/21"

"FTR AD 01/21"

"FTR BA 01/21"

FIBERTITE AT FASCIA SYSTEM  
 (RAISED CANTED EDGE)

REVISES DETAIL	ISSUE DATE	DRAWING NUMBER
ALL PREVIOUS	02-23-21	FTR-DE5