

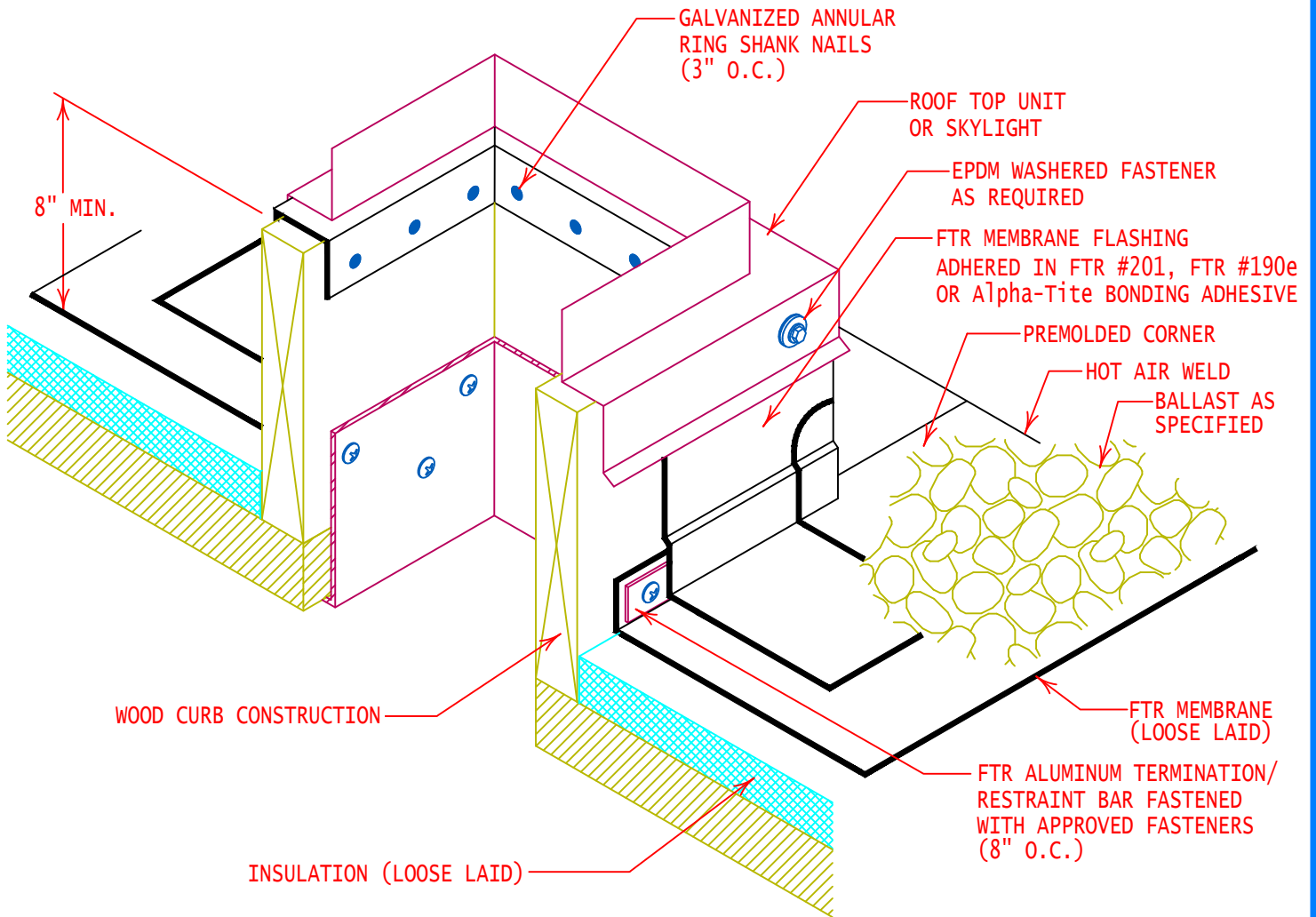
NON-LIFTABLE

FTR #101 SEALANT  
BEHIND TOP OF FLASHING

MECHANICAL UNIT

METAL COUNTERFLASHING, FASTEN W/  
EPDM WASHERED FASTENERS (12" O.C.)

FTR FLASHING (FULLY ADHERED)



GENERAL REFERENCE:  
"FTR GS 01/21"  
APPLICABLE SYSTEMS:  
"FTR BA 01/21"

WOOD CURB or SKYLIGHT FLASHING  
(BLOCKING ALTERNATE) T-BAR RESTRAINT

REVISES DETAIL	ISSUE DATE	DRAWING NUMBER
ALL PREVIOUS	02-23-21	FTR-DP1bi