

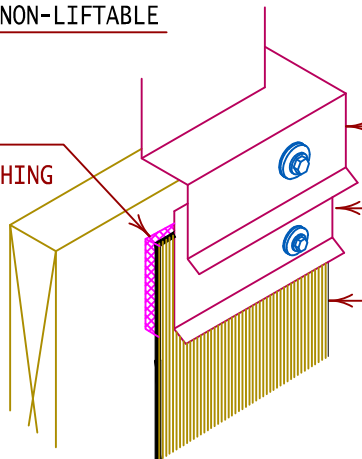
NON-LIFTABLE

FTR #101 SEALANT  
BEHIND TOP OF FLASHING

MECHANICAL UNIT

METAL COUNTERFLASHING, FASTEN W/  
EPDM WASHERED FASTENERS (12" O.C.)

FTR FLASHING (FULLY ADHERED)



GALVANIZED ANNULAR  
RING SHANK NAILS (3" O.C.)

ROOF TOP UNIT  
OR SKYLIGHT

EPDM WASHERED FASTENER  
AS REQUIRED

FTR MEMBRANE FLASHING  
ADHERED IN FTR #201  
OR #190e ADHESIVE

PREMOLDED CORNER

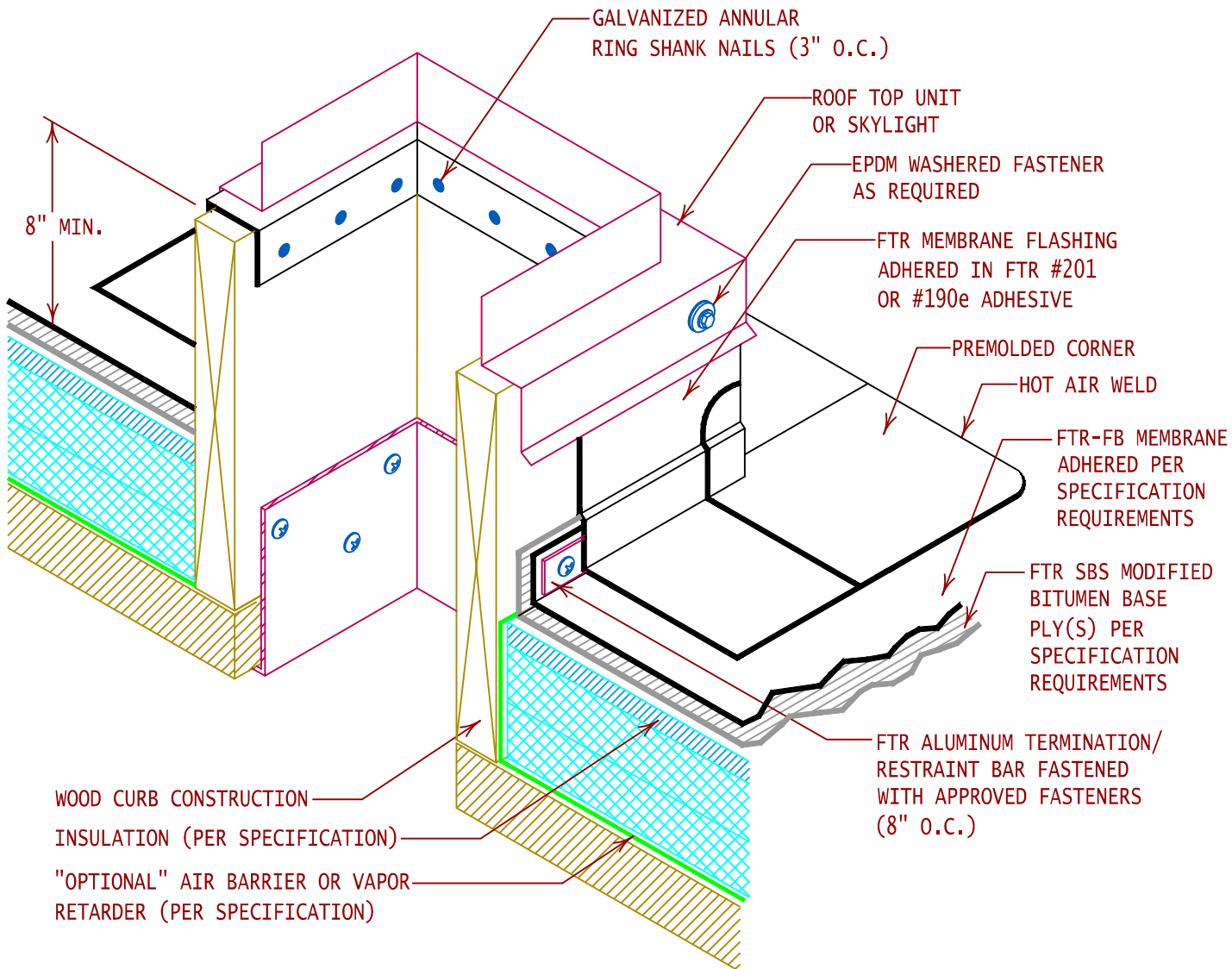
HOT AIR WELD

FTR-FB MEMBRANE  
ADHERED PER  
SPECIFICATION  
REQUIREMENTS

FTR SBS MODIFIED  
BITUMEN BASE  
PLY(S) PER  
SPECIFICATION  
REQUIREMENTS

FTR ALUMINUM TERMINATION/  
RESTRAINT BAR FASTENED  
WITH APPROVED FASTENERS  
(8" O.C.)

8" MIN.



WOOD CURB CONSTRUCTION

INSULATION (PER SPECIFICATION)

"OPTIONAL" AIR BARRIER OR VAPOR  
RETARDER (PER SPECIFICATION)



GENERAL REFERENCE:  
"FTR GS 02/13"  
APPLICABLE SYSTEMS:  
"FTR MP 02/13"

TYPICAL MULTI-PLY CURB BASE TERMINATION  
T-BAR BASE RESTRAINT

REVISES DETAIL	ISSUE DATE	DRAWING NUMBER
ALL PREVIOUS	06-16-15	FTR-DCB1MP