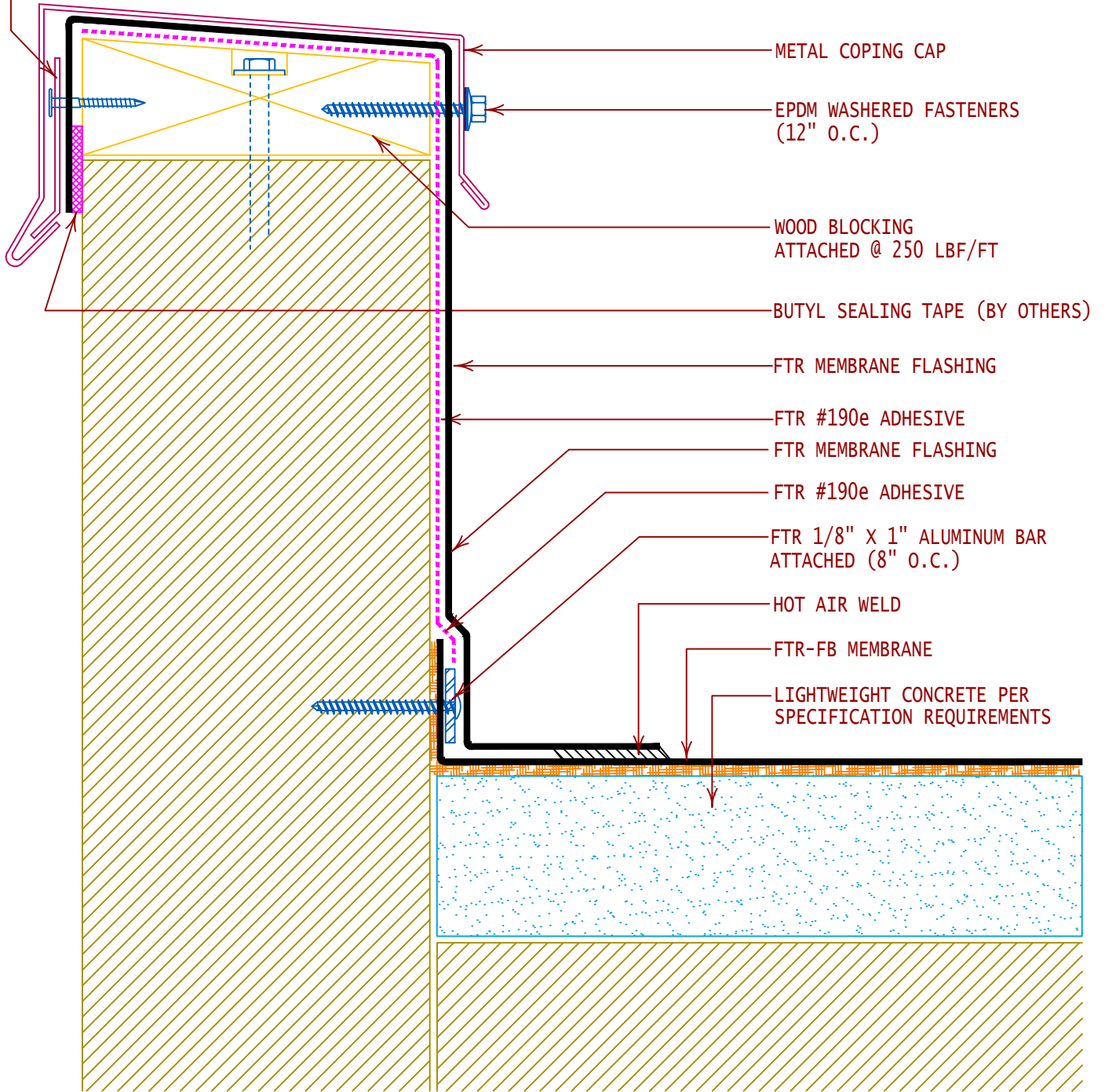


CONTINUOUS GALVANIZED METAL CLEAT
FASTEN WITH GALVANIZED ANNULAR
RING SHANK NAILS (3" O.C.)

NOTE:
FOR WALL FLASHING TERMINATIONS,
REFER TO DETAILS FTR-DW4 OR FOR
WALLS OVER 40" REFER TO DETAIL
FTR-DW7.



GENERAL REFERENCE:
"FTR GS08-17"
APPLICABLE SYSTEMS:
"FTR AD08-17"

PARAPET WALL FLASHING LIGHTWEIGHT CONCRETE		
REVISES DETAIL	ISSUE DATE	DRAWING NUMBER
ALL PREVIOUS	10-01-18	FTR-LWPW