



FiberTite® Simulated Metal Roof Profile

Product Data

Metal roofs look great and tend to have long life, but their reputation to be leak free is less than brilliant – particularly for complex roofing designs such as changes in roof direction, valleys, wall seams and conduit or vent penetrations. FiberTite’s patent-pending Simulated Metal Roofs provide the look of metal with a proven long-term track record and heat-sealed seams for superior long-term leak protection.

DESCRIPTION

FiberTite’s patent-pending Simulated Metal Roof Profile (SMRP) is manufactured from Seaman Corporation’s proprietary compound including a coextruded, thermally-activated, KEE adhesive strip on the bottom for flawless installation.

The SMRP profile is designed for installation over FiberTite Fleece Back membranes. (Follow most current FiberTite Guide Specification – SMRP06-12 and Detail Drawings for the installation of Fleece Back Membranes with the Simulated Metal Roof Profile)

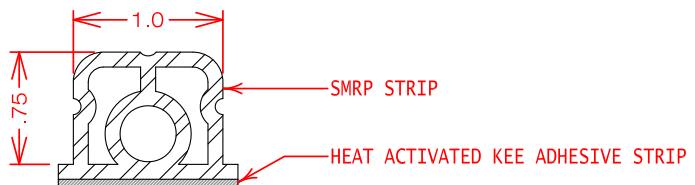
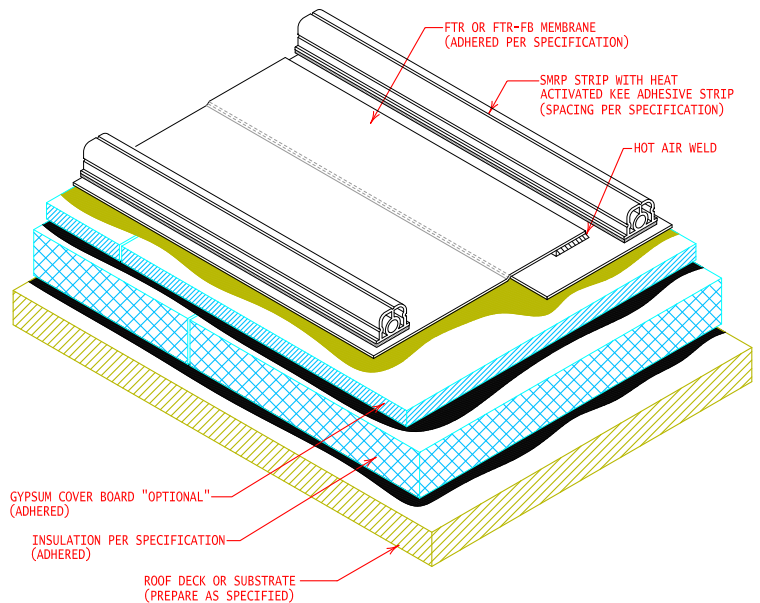
The FiberTite SMRP is available in flexible coils that are 100' (30.5 m) in length.

FiberTite SMRP may be secured to pre-approved FiberTite membranes at specified intervals to simulate the aesthetics of a metal roof system.

The coextruded, thermally-activated, KEE adhesive strip on the bottom of the profile ensures complete compatibility with FiberTite membranes and the durability expected from a FiberTite Roofing System. The SMRP is adhered to FiberTite membranes using conventional hot air equipment.

Seaman Corporation offers a “wheel kit” to modify Leister Hot Air Equipment to automate the installation of the SMRP.

CONSTRUCTION DETAIL



SMRP SECTION VIEW



INTELLIGENT
ROOFING SOLUTIONS

For more information on FiberTite Systems and accessories please call:
Seaman Corporation (800) 927-8578
International (330) 262-1111
www.fibertite.com

FiberTite® is a registered trademark of Seaman Corporation.
Elvaloy® is the trademark property of DuPont™ Corporation.

