



# COLUMBIA

## Journeyman Wiper Installation

Below are the steps to install a wiper motor on a Journeyman 100 & 200.  
Part Number CVG761684.

### Tools you need.

Ratchet

8mm socket

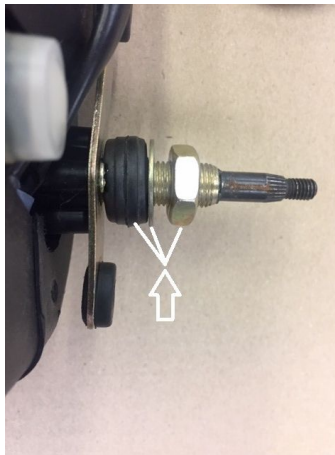
10mm socket

10mm wrench

19mm wrench

Side cutters

1. Remove nut, washer, and rubber grommet.



2. Install wiper motor into wiper housing to hold the motor in place. Add the grommet, wash and nut.

Columbia Vehicle Group, Inc.

A Nordic Group Company | Business Ventures Since 1947



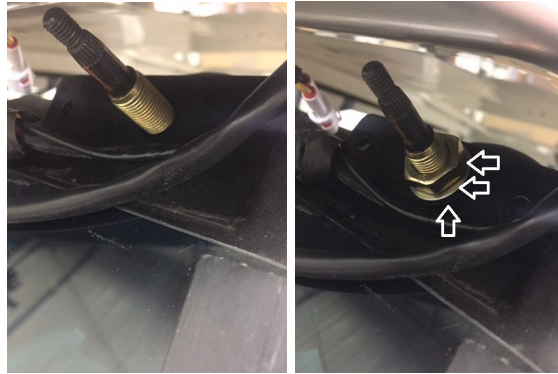
COLUMBIA



TOMBERLIN



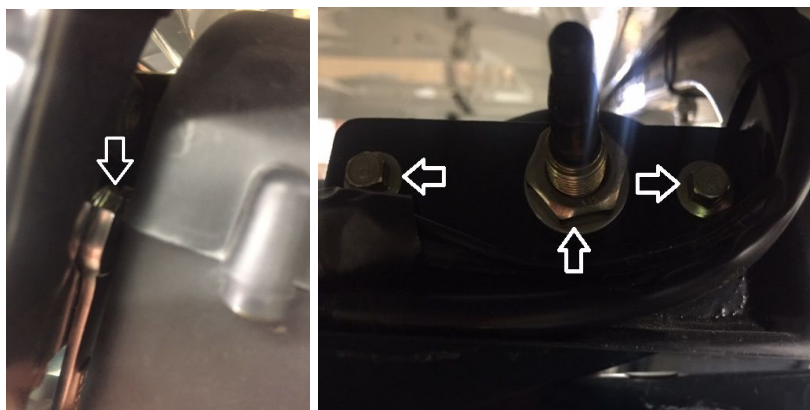
# COLUMBIA



3. Snug passenger side bolt into cage nut on the wiper motor do not tighten at this time.



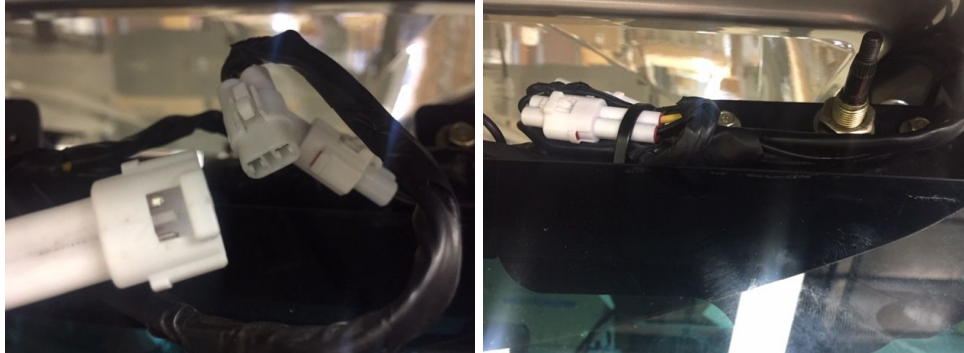
4. Use open end wrench to line the nut up with the bolt. Then tighten all nuts and bolts.





# COLUMBIA

5. Locate dome light harness and locate the wiper motor connection. Plug in at this time and zip tie harness back in place.



6. Pull knob to turn on the wiper. and press to turn off this will set the wiper blade in the correct position.



7. Install rubber cover onto the wiper shaft.





# COLUMBIA

8. Install wiper blade onto the motor shaft. And rotate it the horizontal position. Tighten the nut to the shaft and close the end cap.

