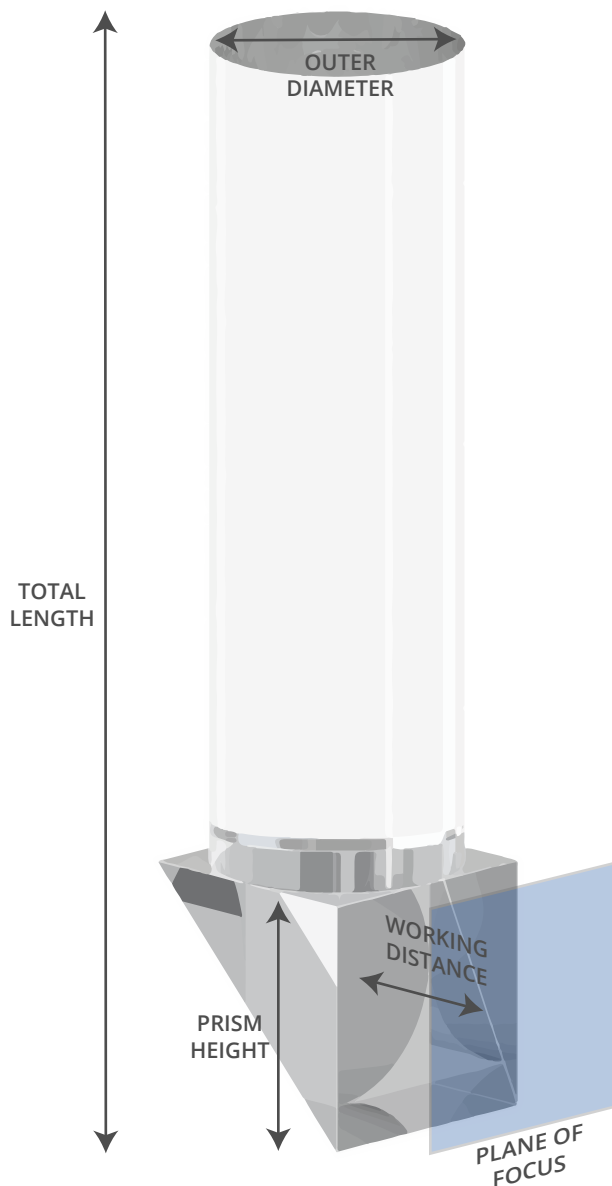
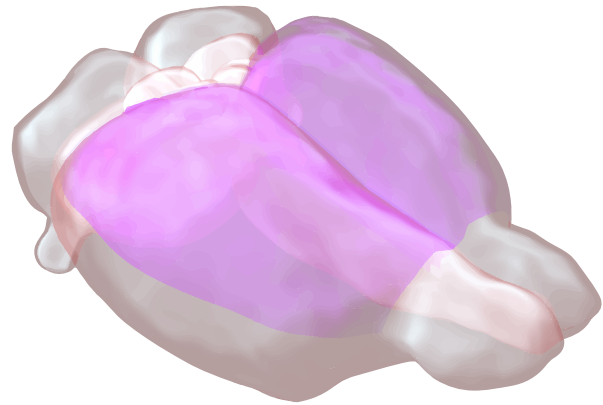


Simultaneous Multi-Layer Neocortical Imaging with Prism Probes

Our new implantable prism probes, custom designed for *in vivo* imaging with nVista, enable you to **visualize Ca²⁺ activity** in hundreds of neurons across **multiple cortical layers** in **freely behaving rodents**.



Study inter- & intra-laminar patterns of cortical activity underlying:

- Sensory integration
- Motor planning
- Decision-making
- Cortical oscillations *and more!*

Specifications

Part Number	Outer Diameter (mm)	Prism Height (mm)	Numerical Aperture	Total Length (mm)	Field of View (mm)	Working Distance* (μm)
PPL-0833	0.85	0.85	0.35	3.3	~0.7	100-300
PPL-1043	1.0	1.0	0.38	4.3	~0.8	100-300

*With 500μm distance between microscope objective & lens