



WELCOME...

...to Visions at
Nor-Shipping 2017.

Nor-Shipping has always been an important time for Hatteland Display as it gives us a chance to meet many of our customers and industry colleagues all in one place. With lots of the world's ship technology developers all in Norway for the week, we get the chance to show how our latest developments can help to improve maritime operations.

Traditionally, we do this at our own temporary showroom at the Felix Konferansesenter, Bryggetorget 3, in the Aker Brygge area of Oslo. I'm pleased to report that we will be returning here this year. But for Nor-Shipping 2017, we will also have a presence at the exhibition centre in Lillestrøm for the first time, as we will be sharing a stand with Elektronix (sister company in the Norautron Group). So please make sure to come and see us on stand B02-25 and at our 'pop-up' showroom in Oslo.

We have a lot of state-of-the-art technology to show this year. Leading the charge is of course the impressive Series X 55 inch Ultra High Definition Chart & Planning Table, which has been turning heads in the industry as a high-tech solution for ECDIS. Recent developments in the series have resulted in this high-end system being made available in new configurations, introducing more opportunities to integrate the pinnacle of maritime display technology in different ways on board.

The same display technology is also available in our new 32 inch Series X MVD, which while much smaller than our Chart & Planning table, is still one of the largest displays available for Integrated Bridge Systems. Meanwhile in the world of Panel Computers, it's worth noting the power upgrade we have introduced for our 24, 26 and 27 inch Series X Panel computers, which now enable much faster processing using Intel Skylake processors.

All of this technology and much more will be on show during Nor-Shipping, and our team is keen to demonstrate how it can be applied to help in the creation of even more advanced maritime solutions. I would like to take this opportunity to wish you all a successful exhibition and we look forward to meeting you at the Nor-Shipping exhibition in Lillestrøm, in our showroom in Oslo and of course at our infamous social event at Rorbua, which happens in the evening on Wednesday 31st May and Thursday 1st June.

Lars Skjelbred-Eriksen
Lars Skjelbred-Eriksen
Vice President Sales & Marketing
Hatteland Display

32 inch Multi Vision Display

The new 32 inch Series X MVD (Multi Vision Display) features the same 4K screen resolution and high-end panel technology as the 55 inch Ultra High Definition Chart & Planning table.

Like our Series X 55 inch Ultra High Definition displays, the new 32 inch Series X MVD provides unmatched viewing clarity in all light conditions. The 32 inch model has been designed to enable a new generation of sophisticated, function rich and user-friendly bridge technologies that demand only the best display solutions to ensure increased navigational safety and efficiency.



With its Ultra High Definition (4K) resolution and superior brightness and contrast, the cutting-edge LED display technology used in the 32 inch Series X MVD enables the presentation of large amounts of multi-application data on a single screen instead of multiple displays. This enables technology developers and systems integrators to streamline console designs and make operation of complex vessel control solutions easier, while reducing installation costs and improving reliability by using fewer overall components for bridge system development.

Approved for harsh maritime environments where reliability and long life time are key factors, the new 32 inch Series X MVD display is a robust, flexible and ergonomic solution, suitable for a wide range of bridge applications including ECDIS, radar, voyage planning, safety systems and tactical command and control platforms.



Features include:

- Console or bracket mounting
- Optional 40 point Multi-touch interface
- Built in On-Screen Display (OSD)
- Option to be supplied calibrated for ECDIS
- Multi-data input
- Optical bonding
- Full dimming.

Ultra High Definition Displays - 55 inch Multi Vision Displays

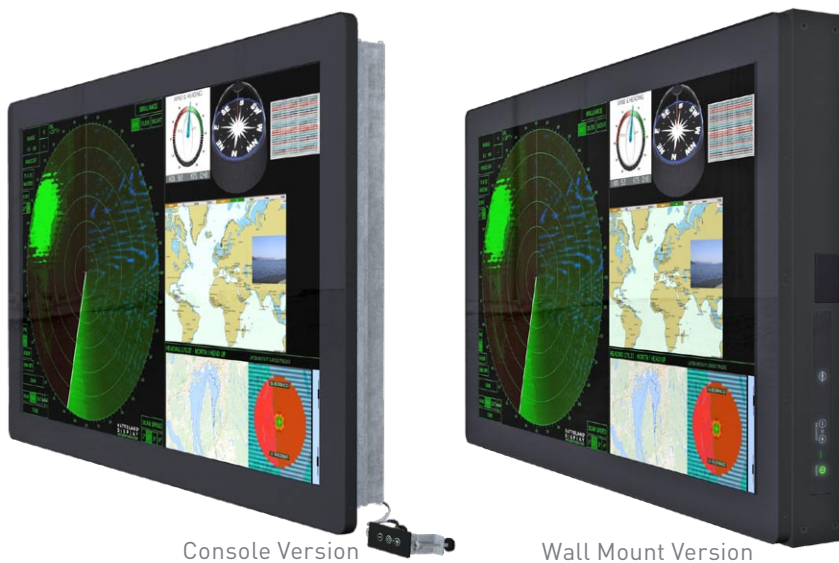
The Series X 55 inch Ultra High Definition Chart & Planning Table is also available in console mounted and floor tilt versions, with a wall-mounted variant also in the pipeline.

Utilising the very best panel technology, for the crispest, brightest and clearest picture, the Series X 55 inch Ultra High Definition Chart & Planning Table has raised the bar in the world of maritime display technology. As a Chart & Planning table it is the ultimate standalone ECDIS, navigation and voyage planning display system. It is the most advanced platform for the safe and effective use of ECDIS, and is the foundation for systems integrators to bring new approaches to ergonomics and user-friendliness on maritime bridges, supporting navigators to improve safety and voyage planning.



New configurations of the Series X 55 inch Ultra High Definition Chart & Planning Table are bringing this unmatched technology to different areas of the bridge too. With console mounted and floor-tilt versions, there are now even more possibilities to improve interaction between man and machine on the ship's bridge. We are confident that our flagship technology will become a key component in the new breed of smart ships, playing a critical role in improving operational safety and efficiency at sea driven by the creativity and ingenuity of our colleagues in the world of maritime technology.

Integrated HT C02 computer in base (optional)



Console Version

Wall Mount Version

As the largest display ever made for ship's bridge applications, with Series X 55 inch Ultra High Definition displays, systems integrators and navigation technology manufacturers now have the real-estate to combine multiple data from different sensors and systems into a single, user-friendly interface.

These are the most technically advanced maritime displays ever developed, delivering the sharpest and clearest image quality, with unmatched brightness and contrast. The 4K resolution ensures clarity under all conditions, so that data is always easily viewable, helping bridge officers and crew to interact safely with technical systems on board.

Features include :

- Touch Screen operation
- Multi-data input
- Built in On-Screen Display (OSD)
- An external remote control panel which can be mounted separately, for operation of the OSD and other parameters. This is a unique feature for a console mounted solution
- Optical bonding for strength and safety as standard, and ECDIS calibration as an option.



External Remote

Panel Computers - Series X Generation 2 (G2)

24, 26 and 27 inch Panel Computers join the second generation Series X range to provide a new platform for current and future product development, for integrated bridge systems.

Developed to accommodate a new data-centric approach to vessel navigation and safety, our new 24, 26 and 27 inch Series X Panel Computers integrate powerful Intel Skylake processor-based computers, high quality display technology and advanced video processing, to deliver a powerful all-in-one computer/display solution.



Series X Panel Computers provide bridge system designers with unmatched flexibility to create far more ergonomic layouts as all components can be housed in one place, which in turn reduces cabling requirements. Series X Panel Computers enable tangible cost savings for equipment manufacturers and systems integrators, largely because they provide the same power and picture quality as a standard display and separate PC configuration, but with lower capital expenditure (relative to purchase of separate displays and computers) and installation costs. In turn, they can be used as the basis of cost reduction programs, which makes it possible for technology integrators to continue improving vital bridge applications whilst still retaining focus on cost for partners and end-customers.

By expanding the second generation Series X portfolio to include these larger Panel Computer models, we have been able to provide more flexibility for equipment manufacturers to utilise the most powerful computers and highest quality displays in a wider range of vessel technology, especially on the bridge. This flexibility will grow further soon, with second generation Series X 15, 17 and 19 inch models in the pipeline.



Maritime Multi Displays - Series X Generation 2 (G2)

Advancements for the Series X generation MMD (Maritime Multi Displays) have been rolled out across the 15, 17, 19, 24, 26 and 27 models.



For users, there is an improved Glass Display Control™ (GDC), GDC backlight uniformity and higher brightness for high luminance environments. For engineers and installers, developments include improved serviceability, allowing for better access to key components. There is also a new table/ceiling mounting solution for the 15, 17 and 19 inch models.

The 24 inch model weighs less than the current solution and its rear chassis casing box is smaller than the current. Additionally, tie-wrap mounting points on terminal plates have turned 45° to improve functionality. The 26 inch version also benefits from these changes.

New features:

- Separate DVI-D and VGA inputs are now DVI-I inputs (VGA to DVI-I adapter is required, when VGA input is selected)
- 2 x Composite video inputs as standard, 3rd possible via option
- External Power button + I2C support on user interface connector
- Support upload/download user settings in OSD menu over SCOM protocol
- Support SCOM communication over USB (in addition to existing Serial and TCP).
- Added Display Port (DP) input
- VGA out is standard
- DDC/CI communication protocol is supported
- New SCOM commands, updated SCOM protocol



HT B30 - New Compact Fanless Computers

We have added two new solid state, compact fanless computers to our state-of-the-art maritime display and computer portfolio, offering improved processing and graphical performance combined with high reliability and reduced lifecycle costs.

The new HT B30 range is based on the latest Intel chipset and Skylake processor platform, delivering even more power for maritime technology developers to design and build high-end vessel control and monitoring solutions that enable safer and more efficient maritime operations.



HT B30 computers are available in two new form factors, short depth and long depth, allowing for flexible installation options including 3U rack mounting in pairs. Using the same system architecture as our new, second generation Series X Panel Computers, the HT B30 range offers significant processing speed and graphical performance improvements, which when combined with multiple-drive solid state storage and silent, fanless operation, positioning it among the most advanced computing platforms for maritime applications.

HT B30 computers can be delivered with a choice of three Intel Core processors, up to i7. Graphical output is handled by 1 x DVI-I, 1 x DVI-D and 1 x Display Port (DP) while standard interfaces include 4 x Ethernet Ports, 4 x USB2.0 and 4 x USB3.0. The HT B30 platform also supports a wide range of interface modules such as CAN/NMEA COM/COM and DIO, ensuring it is ready-of-the-shelf for all maritime applications. In addition, HT B30 computers features a lightweight, fully enclosed aluminium chassis and comes with AC, dual DC, wide range DC or Hatteland Display's Multi-power system (both AC and DC power built in).



While the silent operation of fanless computers can improve the bridge working environment, the fact that there are no moving parts inside is the key benefit, as this prolongs lifetime and reduces service costs while contributing to the reliability and availability of critical systems on board.

By boosting the power of these high-end computers, we are providing an even more advanced platform for the maritime technology industry to create solutions that meet the on board control, monitoring and data needs of both ship owners and crew.

Main Office Norway
Hatteland Display AS
Stokkastrandvegen 87B
N-5578 Nedre Vats, Norway

Tel: +47 4814 2200
mail@hatteland-display.com

Hatteland Display also has sales offices in Norway, Germany, France and USA.

To get an up-to-date list of our locations, please visit
www.hatteland-display.com/locations



Visions eNewsletter: If you would like to receive it, sign up at www.hatteland-display.com/subscribe