



Device Technologies

DRY EYE SOLUTIONS

AUSTRALIA

☎ 1300 338 423

✉ customers@device.com.au

🌐 www.device.com.au

New Zealand

☎ 0508 338 423

✉ customers@device.co.nz

🌐 www.device.co.nz

Pioneering Possibility.

DRY EYE INSTRUMENTS

Reusable

MASKIN® MEIBUM EXPRESSOR

The polished knurled rollers are designed to gently express meibum from inflamed or occluded meibomian glands.

Product code: RHN-08-01716

TEARSE MEIBUM EXPRESSOR FORCEPS

Broad, smooth polished tips form a "V" when closed, to direct oil upwards and towards the gland orifice.

Product code: RHN-08-01720

ARITA MEIBOMIAN GLAND COMPRESSOR

Broad, smoothly polished tips; designed to gently express meibum from inflamed or occluded meibomian glands.

Product code: KAT-K5-5900

BATTLE EYELID COMPRESSION FORCEPS

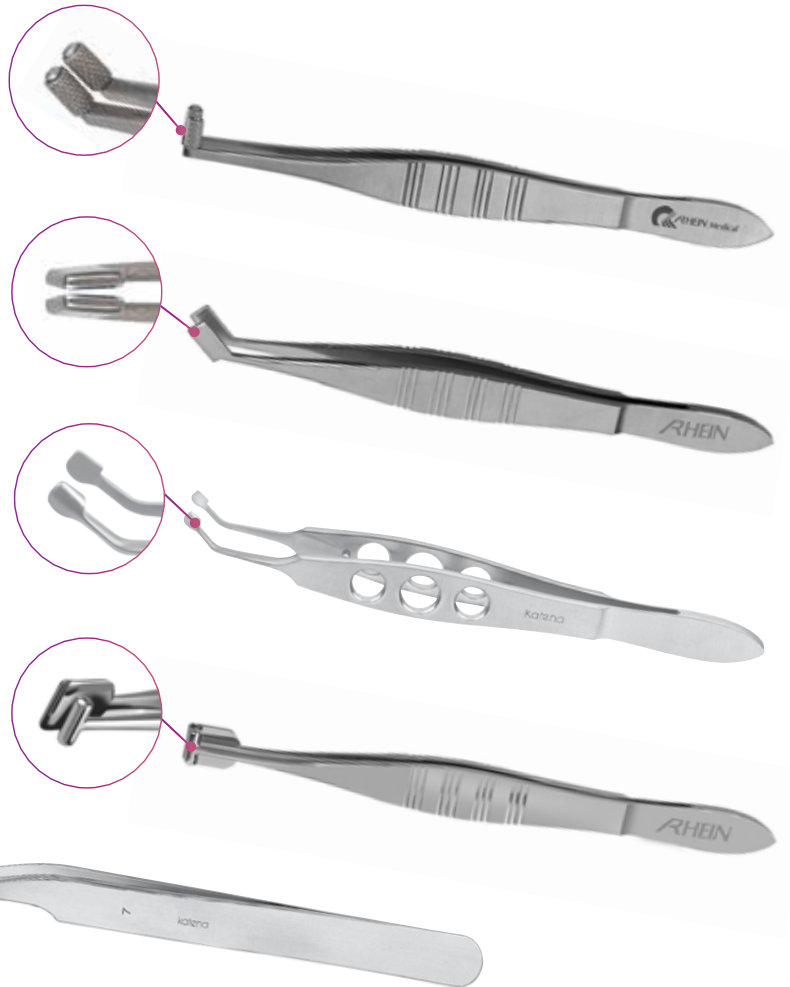
Broad, smooth polished platform and compression bar to gently express meibomian glands.

Product code: RHN-08-01718

JEWELERS FORCEPS #7 CURVED

Standard, curved.

Product code: KAT-K5-6570



Disposable*

TYING FORCEPS

Curved, 6 mm tying platform, flat handle. Overall length 96 mm. 10 per box.

Product code: BD-581411

JEWELERS FORCEPS

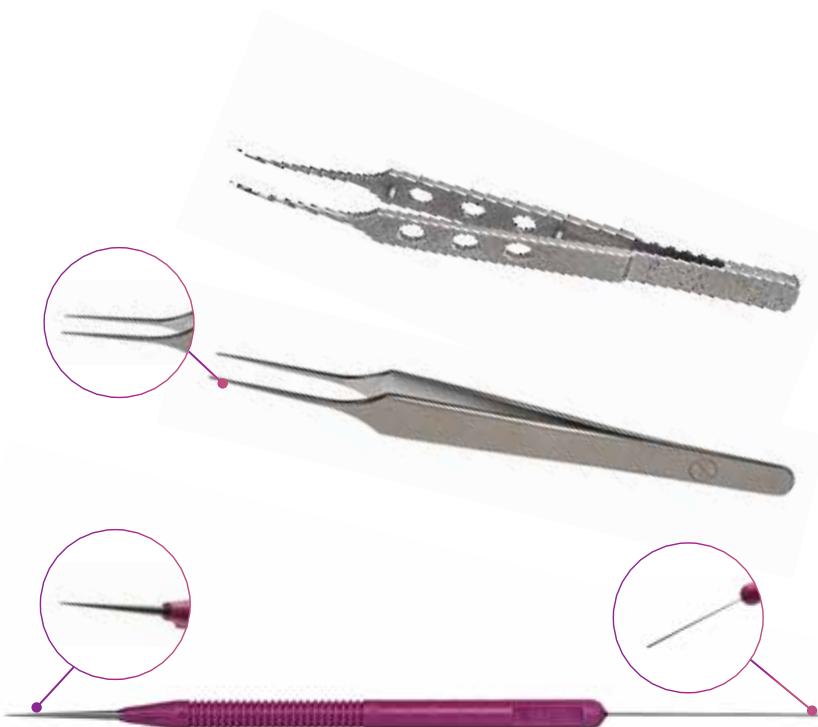
No. 3. Straight forceps, flat handle. Overall length 100 mm. 10 per box.

Product code: BD-581458

PUNCTAL DILATOR AND PROBE (KHAN)

Dual function instrument allows for single handed, comfortable transition from dilating to probing without release of lateral lid traction. 3 per box.

Product code: BD-585124



DRY EYE ACCESSORIES

CLEMENT CLARKE SCHIRMER TEAR TEST STRIPS

- Help to determine total lachrymal secretion and provide useful information prior to the fitting of contact lenses
- 2 per pack, 50/Pr. per box

Product code: CC-4701001



*Designed in conjunction with Minas Coroneo, M.D, NSW, Australia

CORONEO™ PUNCTAL GAUGE

A Complete Gauging/Dilating System In One Instrument

- Graduated demarcated tips on both ends
- Gauge dilates from 0.5mm to 1.0mm diameters
- Can be used with all punctum plugs

Product code: EV-2040

Lacrimal Cannula*

19G Shaft attached to 12G Malleable cannula.

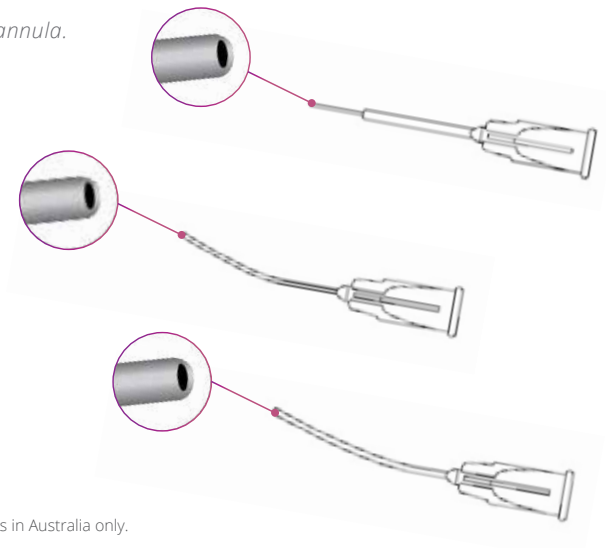
Product Code: BD-585016

26G curved lacrimal cannula .

Product Code: BD-581276

21G curved lacrimal cannula.

Product Code: BD-581615



*These products are distributed by Device Technologies in Australia only.

PERMANENT OCCLUSION

PARASOL STERILE PRE-LOADED PUNCTAL*

Each occluder is individually sterile and pre-loaded on a high-quality disposable inserter. Permanent occlusion, though easily reversible, is indicated for chronic dry eye conditions. Made from medical grade silicone the Parasol is easy to insert & offers an excellent retention rate, whilst remaining comfortable for your dry eye patients.

Description	Product code
Parasol Sterile Pre-Loaded X-Small (0.25mm - 0.35mm)	ODY-A14-200
Parasol Sterile Pre-Loaded Small (0.35mm - 0.65mm)	ODY-A14-201
Parasol Sterile Pre-Loaded Medium (0.6mm - 0.85mm)	ODY-A14-202
Parasol Sterile Pre-Loaded Large (0.9mm+)	ODY-A14-203



EAGLEPLUG®

The Original Tapered-Shaft™ Punctum Plug:

Easy to insert and remove, the EaglePlug is the economical dry eye solution with a proven record of success. Supplied: 2 individually packaged sterile plugs.

2 Individual Sterile Package; preloaded.

Description	Product code
0.4mm dia.	EV-30342
0.5mm dia.	EV-30352
0.6mm dia.	EV-30362
0.7mm dia.	EV-30372
0.8mm dia.	EV-30382



EAGLE FLEXPLUG®

The Original Tapered-Shaft™ Punctum Plug:

The only tapered shaft™ punctum plug with contouring traction ribs. Designed to provide the ultimate in flexibility, fixation, and patient comfort. Supplied: 2 individually packaged sterile plugs.

2 Individual Sterile Package; preloaded.

Description	Product code
0.4mm dia.	EV-30742
0.5mm dia.	EV-30752
0.6mm dia.	EV-30762
0.7mm dia.	EV-30772
0.8mm dia.	EV-30782



SUPEREAGLE®

The Simple Solution for Dry Eye:

Lowest profile rim and soft, low durometer silicone provides excellent patient comfort. Patented Tapered Shaft™ and pivoting wide-flex nose provides excellent retention. Available in three sizes. Supplied: 2 individually packaged sterile plugs with inserter/dilator per twin pack.

2 Individual Sterile Package; preloaded.

Description	Product code
0.4-0.6mm dia. (Small)	EV-31302
0.6-0.8mm dia. (Medium)	EV-31312
0.8mm and larger dia. (Large)	EV-31322



SUPERFLEX®

The Comprehensive Solution for Dry Eye:

Low profile rim and soft for patient comfort. Patented Tapered Shaft™ and pivoting wide-flex nose for super retention.

2 Individual Sterile Package; preloaded.

Description	Product code
0.4mm dia.	EV-31742
0.5mm dia.	EV-31752
0.6mm dia.	EV-31762
0.7mm dia.	EV-31772
0.8mm dia.	EV-31782
0.9mm dia.	EV-31792
1.0mm dia.	EV-31702
1.1mm dia.	EV-31712
1.2mm dia.	EV-31722
1.3mm dia.	EV-31802



PLUG1™

The One-Size Solution For Dry Eye:

Dual-lobed design allows Plug1 to fit a wide range of punctum sizes. Supplied: 2 individually packaged sterile plugs.

2 Individual Sterile Package; preloaded.

Description	Product code
0.5-0.8mm dia.	EV-30012



PARTIAL OCCLUSION MICRO FLOW™

MICRO FLOW™*

Each Occluder is individually sterile & pre-loaded on a high-quality disposable inserter. MicroFlow provides simple, and reversible means of partial occlusion by limiting the drainage of tears into the lacrimal duct. Ideal when permanent occlusion is too much.

Description	Product code
Sterile Pre-loaded Small (0.4mm — 0.5mm)	ODY-A14-401
Sterile Pre-loaded Medium (0.55 — 0.7mm)	ODY-A14-402
Sterile Pre-loaded Large (0.7mm — 0.85mm)	ODY-A14-403



EAGLEPLUG® TEARFLOW™

Up to a 150% larger lumen than our regular Flow Controller. The larger lumen is designed to allow additional flow in cases where total punctal occlusion is not desired. Supplied: 2 individually packaged sterile plugs.

2 Individual Sterile Package; preloaded.



Description	Product code
0.5mm O.D. x 0.2mm I.D.	EV-3005
0.6mm O.D. x 0.3mm I.D.	EV-3006
0.7mm O.D. x 0.3mm I.D.	EV-3007
0.8mm O.D. x 0.3mm I.D.	EV-3008
0.9mm O.D. x 0.4mm I.D.	EV-3009
1.0mm O.D. x 0.5mm I.D.	EV-3010

TAPERED SHAFT™ FLOW CONTROLLER

When total punctal occlusion is too much; designed for regulated flow of lacrimal fluid and maximum retention. The flesh-like comfortable flow controller is easy to insert and is reversible.

2 Individual Sterile Package; preloaded.



Description	Product code
0.5mm dia.	EV-30652
0.6mm dia.	EV-30662
0.7mm dia.	EV-30672
0.8mm dia.	EV-30682

EXTEND ABSORBABLE SYNTHETIC IMPLANTS*

Provide occlusion for up to 3 months for patients experiencing dry eye symptoms

Description	Product code
Absorbable Synthetic Implants 0.4 mm x 2.0 mm (box/10 pairs)	ODY-A13-204
Absorbable Synthetic Implants Variety Pack (box/3sml 4med 3lge)	ODY-A13-200
Absorbable Synthetic Implants 0.3 mm x 2.00 mm (box/10 pairs)	ODY-A13-203
Absorbable Synthetic Implants 0.5 mm x 2.00 mm (box/10 pairs)	ODY-A13-205



COMPLETE DIAGNOSIS* OF DRY EYE

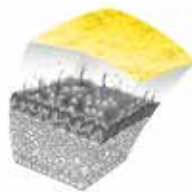
LACRYDIAG™

Ocular surface analyser

- ✓ 4 non-contact exams in 4 minutes
- ✓ Immediate results
- ✓ Delegable exams
- ✓ Can be adapted to suit all work environments



> LIPID

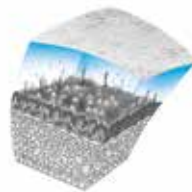


1. INTERFEROMETRY:

- **Qualitative analysis** of the **lipid layer**
- **Quick determination** of lipid layer **quality**
- Evaluation of lipid layer **thickness** based on a grading scale



> AQUEOUS

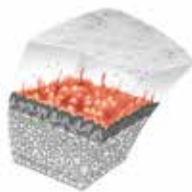


2. TEAR MENISCUS:

- Detailed image of the **Aqueous Layer**
- Advanced software feature allowing the practitioner to approximate the **Tear Meniscus Height (mm)**



> MUCIN



3. N.I.B.U.T. (NON INVASIVE BREAK-UP TIME):

- Evaluation of **tear film stability** within the **mucin layer**
- Automatic timing of the **Tear Film Break-up (sec)** using the device software



4. MEIBOGRAPHY OF UPPER AND LOWER EYELIDS:

Infrared meibography is the method used to clearly visualise meibomian gland condition and dysfunction. It provides a clear image of the ducts.

- **Qualitative analysis** of the **meibomian glands** in the upper and lower eyelids.
- **Software detection** of **meibomian glands** and **automatic estimation of the percentage of loss** by the device software.

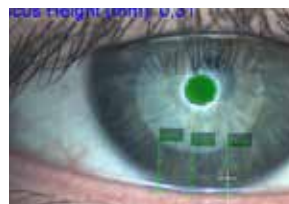
INTERFEROMETRY



N.I.B.U.T.



TEAR MENISCUS



MEIBOGRAPHY



*Final diagnosis to be performed by practitioner.

TREATMENT OF DRY EYE

LACRYSTIM™

IPL System

- ✔ Treatment of Meibomian Glands Dysfunction (MGD) and inflammation (rosacea & blepharitis)
- ✔ Simple and fast treatment (<5 min) with clinical results, including an improvement of tear film quality & reduction of symptoms of Dry Eye
- ✔ Treatment on all skin types (up to phototype VI) thanks to the optimised light spectrum of 610nm to 1200nm
- ✔ Water cooled hand-piece provides a long lasting flashlamp, with no energy loss between first and last shot, and only requires a thin layer of gel



TECHNICAL SPECIFICATIONS

LACRYSTIM™	
Technology	IPL (Intense Pulsed Light) Technology
Wavelength	610 - 1200 nm
Fluence	1 J - 15 J / cm ²
Size	580 (H) x 275 (L) x 280 (D) mm
Weight	25 kg
Filter	610 nm filter, anti UVA, UVB and UVC filter
Cooling	Water cooling system
Flashlamp	Xenon flashlamp
Technical specifications	220 VAC





AUS 📞 **1300 DEVICE** (338 423)
customers@device.com.au
www.device.com.au

NZ 📞 **0508 DEVICE** (338 423)
customers@device.co.nz
www.device.co.nz

*These products are distributed by Device Technologies in Australia only.