

# OPHTHALMOLOGY & OPTOMETRY

---

P R O D U C T   C A T A L O G U E   2 0 1 9 / 2 0 2 0

☎ 1300 DEVICE (338 423)

✉ [customers@device.com.au](mailto:customers@device.com.au)

🌐 [device.com.au](http://device.com.au)



# YOUR VISION. *OUR FOCUS.*

At Device Technologies, we are committed to helping you build your dream practice.

Our team of Ophthalmic Diagnostic specialists have been proud to supply the Optometry & Ophthalmology industry of Australia & New Zealand with healthcare solutions for over 25 years.

We pride ourselves on providing access to the best medical technology available worldwide, which is why we work closely with our distribution partners, who represent some of the world's most highly respected brands such as **Topcon, Haag-Streit, Quantel-Medical, Heine, Diagnosys** and **Reichert**.

### Dedicated to Support

We understand the absolute importance of maintaining an efficiently operating practice. Our support services are here to ensure your practice is at its best, year round.



#### Customer Service

Our skilled and dedicated Ophthalmic Customer Service team are at the ready, with our hotline open from 8am to 6pm, Monday to Friday. We also provide ease-of-access through our Express Order forms, making it easy and convenient to order replacement consumables.



#### Technical Service

Our Technical Service division of factory trained technicians are highly experienced and are here to support you and keep your practice running.



#### Practice Layout & Design

Practice design can play a crucial role in efficient patient flow & practice efficiencies. With over 50 years of combined experience, we are pleased to offer a consultative approach to helping you optimise patient flow and clinical efficiencies.



#### Marketing Services

Unsure of how to promote your new diagnostic capabilities? Our in-house Marketing team can advise on digital marketing best practice within the healthcare landscape.



#### On-going Training & Support

We want to ensure you get the most out of your new technology, after-all it's a significant investment. Our product specialists offer follow-up training and user-support to assist in the operation and functions of all the equipment we provide.



#### Capacity & Coverage

With dedicated Sales and Technical Service representation based in every one of our offices in Sydney, Melbourne, Brisbane, Adelaide, Perth & Auckland we've positioned ourselves to be at the ready to support you and your practice. We also have additional Technical Service support based out of Townsville and Hobart, providing rapid response to the more remote regions of Australia.

-  .....4
  - OCT & Imaging
  - Auto Refraction
  - Pre-Test Cataract
  - Vision Testers
  - Slit Lamps
  - Chairs & Stands
  - Instrument Tables
-  ..... 12
  - Slit Lamps
  - SL Imaging
  - Visual Fields
  - Tonometry
-  ..... 16
  - Operating Microscopes
-  ..... 19
  - Dry Eye Devices
  - Ultrasound
  - Therapeutic Lasers
-  ..... 22
  - Slit Lamps & LCD Acuity Charts
  - Visual Fields
-  ..... 24
  - Examination & Procedure Chairs
-  ..... 28
  - Direct & Indirect Ophthalmoscopes
  - LED Headlights & Loupes
-  ..... 30
  - Reusable & Single-Use Lenses
-  ..... 32
  - Electrophysiology
-  ..... 34
  - Hand-held Instruments
- ORTHOPTIC PRODUCTS** ..... 35



### TRITON OCT

The only commercially available Posterior and Anterior SWEPT SOURCE OCT.

- Invisible 1050nm wavelength penetrates cataracts and other media opacities
- 100,000 A-scans/sec - 12mm x 9mm 3D-WIDE scans provides a dense data set
- Comprehensive reports, including Glaucoma & hood reports
- Red-free & Colour fundus photography standard
- Optional Anterior Segment attachment, Fluorescein Angiography, Fundus Auto-Fluorescence and OCT-Angiography



### MAESTRO OCT

Fast, efficient, wide field OCT Screening.

- Completely automated alignment focus & capture, flexible touch-screen for versatile positioning
- Normative comparisons for Macula, RNFL & Ganglion Cell layers from one scan in each eye
- Red-free & Colour fundus photography standard
- Anterior Segment attachment optional

### IMAGENET® 6

IMAGENET® 6 is a digital software for ophthalmic imaging, capable of acquiring, displaying, enhancing, analysing and saving digital images obtained with a variety of Topcon instruments, such as Spectral Domain and Swept-Source OCT systems, mydriatic and non-mydriatic retinal cameras and photo slit lamps. IMAGENET® 6 features a SQL expanded database and has numerous image management functions that facilitate image acquisition, enhancement, measurement, comparison, etc.

- Browser based software that is Operating system and PC independent and eliminates the need to load software on each PC
- Single software provides comprehensive image viewing and data management for all Topcon imaging devices
- Multimodal display provides dynamic viewing of OCT images (B Scans, 3D images, enface images), data and reports along with registered fundus images on one screen
- Extensive array of image management tools including: Advanced measuring and analysis functions, Patient Consultation module, Stereo module, color balance and contrast adjustment tools



### TRC-NW8F PLUS NON MYDRIATIC CAMERA

*With Fluorescein, Auto Fluorescence, Colour and Red Free Imaging*

TRC-NW8 and the TRC-NW8F are truly versatile cameras, capable of non-mydriatic colour, red-free and fluorescein imaging.

The TRC-NW8F Plus also offers auto fluorescence. The NW8 series provides auto focus, auto shoot and auto small pupil detection to make the process of image capture very simple and user friendly.

4-in-1 multi-functional retinal camera with:

- Colour, red-free, fluorescein and auto fluorescence imaging
- Lower flash Intensity
- Easy to use
- Auto focus, auto shoot and auto small pupil detection
- Auto enhance
- Seamless image management with Topcon IMAGENet software



### TRC-50 DX

The Topcon TRC-50DX and the TRC-50DX (Type IA), improve on the quality of Topcon retinal cameras with functions to enhance their versatility and operation including a control panel equipped with touch screen to allow for quick and easy change of settings.

- 50, 35 and 20 degree optical angles of coverage
- Auto fluorescence (Spaide filters) and ICG options
- Small pupil mode and aperture adjustment
- 21 levels of flash intensity
- Choice of high resolution CCD cameras
- Easy-to-use touchscreen control panel
- Seamless image management networking with Topcon IMAGENet software



### TRC-NW400

The Topcon TRC-NW400 is a fully automated, easy-to-use, auto-focus, auto-capture non-mydriatic retinal camera that is designed to obtain high resolution colour images of the retina and the anterior segment of the human eye. It is equipped with automatic focusing and capture and a fully automated mechanism that moves the optical head from one eye to the other without operator intervention.

- Fully automated operation and automatic transfer from eye to eye
- 10" touch screen monitor for instrument control and image display
- Auto stereo feature does not require manual movement of the optical head
- Anterior segment photography
- 9 internal LED fixation targets





### TRK-2P

Completely automated alignment, focus and measurement acquisition. Flexible colour touch-screen for versatile positioning. Integration with Practice Management Software. All four measurements, in both eyes, in less than 60 seconds!

- Auto-Refraction
- Auto-Keratometry
- Non-contact Tonometry
- Non-contact Pachymetry



### KR-1

Auto-refractor Keratometer, with completely automated alignment and capture. One-Touch control via the easy-to-use colour touch screen monitor. Flexible layout and space saving design is achieved with the 360° swivel monitor, allowing the unit to be positioned in any orientation.

### KR-1W

The 5-in-1 KR-1W Wavefront Analyser boasts the combined technologies of wavefront aberration, corneal topography and auto-refraction. The system features full auto-alignment, a large colour touch screen, on-board evaluation software, wavefront image sequence and simulated visual acuity assessment. The KR-1W provides the eye care professional with all the required information on the human refractive system to perform optimal wavefront analysis.

- 5-in-1 instrument features:
- Aberrometry
  - Topography
  - Keratometry
  - Pupillometry
  - Auto-refraction



### CT-1P

Non-contact Tonometer & Non-contact pachymeter with completely automated alignment and capture. One-Touch control via the easy-to-use colour touch screen monitor. Flexible layout and space saving design is achieved with the 360° swivel. Built-in Adjusted IOP compensates for CCT, whilst still displaying raw data.



### KR-800

Auto-refractor Keratometer, with manual alignment and capture. Fast, simple and responsive directional control via the user control stick. The same Topcon Rotary Prism measuring technology as the KR-1 and TRK-2p, at a lower cost price-point.



### SP-1P

Specular Microscope with completely automated alignment and capture. One-Touch control via the easy-to-use colour touch screen monitor. Flexible layout and space saving design is achieved with the 360° swivel monitor, allowing the unit to be positioned in any orientation. The Topcon SP-1p features a wide angle "Panorama" photography mode, and comprehensive analysis software.



### CA-800

Corneal Analyser with Infra-Red Placido disk topography.

- Automated alignment, focus and capture – controlled by colour touchscreen or digital control stick
- Includes Meibomian Gland imaging, tear film breakup time, and Zernike Analysis reports



### CV-5000

Computerised Vision Tester - optional integration with PC-50s LCD Visual Acuity Chart.

- Automated Refractor Head controlled by KB-50 colour touch screen & dial controller
- Advanced integration – pull through previous script and/or auto-refraction. Export final subjective data to practice management software

### VT-10 REFRACTOR HEAD

The VT-10 provides quality and value, and guarantees accuracy in refraction measurements.

- Wide testing range
- Synchronised cross cylinders
- Easy controls and clear scales
- Multi-coated lenses for superior performance
- Wide range of versatile auxiliary lenses



### PC-50

Topcon's completely integrated Visual Acuity LCD screen. Digitally customised for any test distance between 2.5m and 6m, the PC-50 can be used in a 'direct' or 'indirect' refraction lane. IR remote control, or controlled via the KB-50 one dial controller when combined with the CV-5000 system.



### CL-300

Computerised Lensmeter, with colour touch screen control

- UV transmittance
- Auto-progressive lens detection
- Integration with Topcon CV-5000 or practice management software



### SL-D701

Topcon's premium digital ready Slit Lamp with tower style illumination column.

- Homogeneous LED illumination
- 5-step magnification up to 40x
- 14mm Slit illumination
- DC-4 Digital Camera option
- Optional enhanced filter system for Meibomian gland observation and Superior Fluorescein observation



### DC-4 CAMERA

Integrated high quality anterior segment imaging solution.

- Capture high quality still and movie images
- Quick and simple operation
- Meibomian gland imaging when combined with optional BG-5M filter module
- Integrate with practice management software



### SL-D301

High quality, digital ready slit lamp, at an affordable price.

- 3-step magnification: 10,16 & 25x
- DC-4 Digital Camera option
- Tower style illumination column



### SL-D4 SLIT LAMP

Compact digital ready 5 step Slit lamp.

- 5-step magnification up to 40x
- 14mm Slit illumination
- DC-4 Digital Camera option
- Halogen illumination



### IS-1 CHAIR & STAND

Functional height adjustable instrument console with stylish European contemporary design.

- Motorised height adjustable table top
- Dual or trio table top options
- Innovative movable touch screen control panel
- Wide range of colour options
- Fixed or recline chair options
- Integrated cable management system
- Wheelchair accessible option



### IS-100

The modern & stylish, compact chair and stand.

- Fixed height dual instrument table top
- Compact design
- Integrated drawer
- Integrated height adjustable patient chair
- Overhead dimmable lamp



### IS-1D

Topcon IS-1D is a rotatable 3-instrument stand with electronic brake controlled by a footswitch, height adjustable table, and optional motorised chair with forward/backward movement.

- Rotating 3 Instruments table
- Electronic brake controlled via footswitch
- Moveable colour touch screen controller
- Wide range of colour options available
- Fixed or recline chair options available
- Integrated cable management system
- Wheelchair accessible option



### IS-600 III CHAIR & STAND

Functional dual instrument console with height adjustable table.

- Motorised height adjustable dual instrument table top
- Compact design
- Integrated cable management system
- Wheelchair accessible option



### IC-1 / IC-1E

A new innovative modern concept providing an efficient solution for presenting instruments in your consulting room or pre-test area.

- Modern design, looks great in both retail space and consult room
- No table legs for easy access and clean look
- Height adjustable top for one & two instruments
- Can be used seated, standing and wheelchair accessible
- Space saving
- Simple & easy operation of the table top
- Optional monitor and keyboard support for complete workstation functionality



### ATE-300

Single-instrument motorised table designed to be stable yet portable. Digital control panel operates the motorised column with a range of 300mm. Lockable castors, and a sturdy base provide stability, whilst the laminated scratch resistant table top and rubber edges provide durability.



### ATE-700 PC

Electric Motorised Instrument table designed for easy patient access and wheelchair accessibility. The table top accommodates 1 or 2 instruments, while the illuminated digital control panel allows for 3 memory heights to be set by the user. The optional PC version, features an extended table top and supports storage for a high end tower PC.



### AIT-16

The cost-effective, single-instrument motorised table designed to be stable yet portable. Press button control operates the motorised column with a range of 220mm. Lockable castors, and a sturdy base provide stability, whilst the laminated table top and rubber edges provide durability.





### LENSTAR LS-900

*"Lenstar is the remarkably easy to use all-in-one IOL power calculation tool that delivers exceptionally accurate Axial length, anterior chamber depth and lens thickness by optical biometry. At the same time, it's dual-zone autokeratometry feature is precise and uniformly consistent. The lenstar is the perfect choice for surgeons migrating toward torics and other premium channel IOLs where highly accurate outcomes are critical for success"*

**Dr Warren Hill, MD FACS**

- Dual-Zone Keratometry with 32 points
- Measured Lens Thickness enables the latest generation of IOL formula
- The complete all-in-one Optical Biometer and IOL planning platform



### EYESUITE

All Haag-Streit Diagnostic devices are steered via one easy-to-use software platform, EyeSuite. EyeSuite has been designed for optimum patient flow in busy practices. It connects all Haag-Streit devices and allows them to be networked with each other, your office computers, and your EMR system without the need for pricey third-party software.

- One easy-to-use platform for all Haag-Streit devices
- Automatic backups provide Data Security
- Free Network viewing licences



### T-CONE AND TORIC SURGICAL PLANNER

With the optional T-Cone toric platform, the axis and astigmatism measurement of Lenstar is extended with true 11-ring Placido topography. This additional data improves the efficacy and safety of toric IOL surgery, eliminating the risk of irregularities and allowing the user to double check the axis location on the topography maps as well as in the surgical planning sketch on high resolution images of the patient's eye. The T-Cone is combined with the EyeSuite IOL Toric Planner for optimal planning of the intervention based on the Barrett Toric Calculator.



### AI IOL CALCULATION

EyeSuite IOL features cutting-edge multivariable IOL formulae for improved refractive outcomes; with its integrated Artificial Intelligence through the Hill-RBF method, in addition to advanced formulae and optional, fully-integrated toric planning module. Advanced calculation formulae include Olsen & Barrett, enhanced further with the optional Toric Planner featuring Calculator from Barrett, Hill, Abulafia & Koch, Lenstar provides the user with latest technology in IOL prediction for any patient.

Now in its second generation, including IOL data from all over the world, collected by leading cataract surgeons as a "big-data" exercise, Hill-RBF is a pattern recognition system utilising artificial intelligence. The total of these features leads to highly accurate IOL predictions and providing confidence thanks to a reliability check.



### OCTOPUS 900

The most versatile All-In-One, 90 degree full field projection perimeter available today.

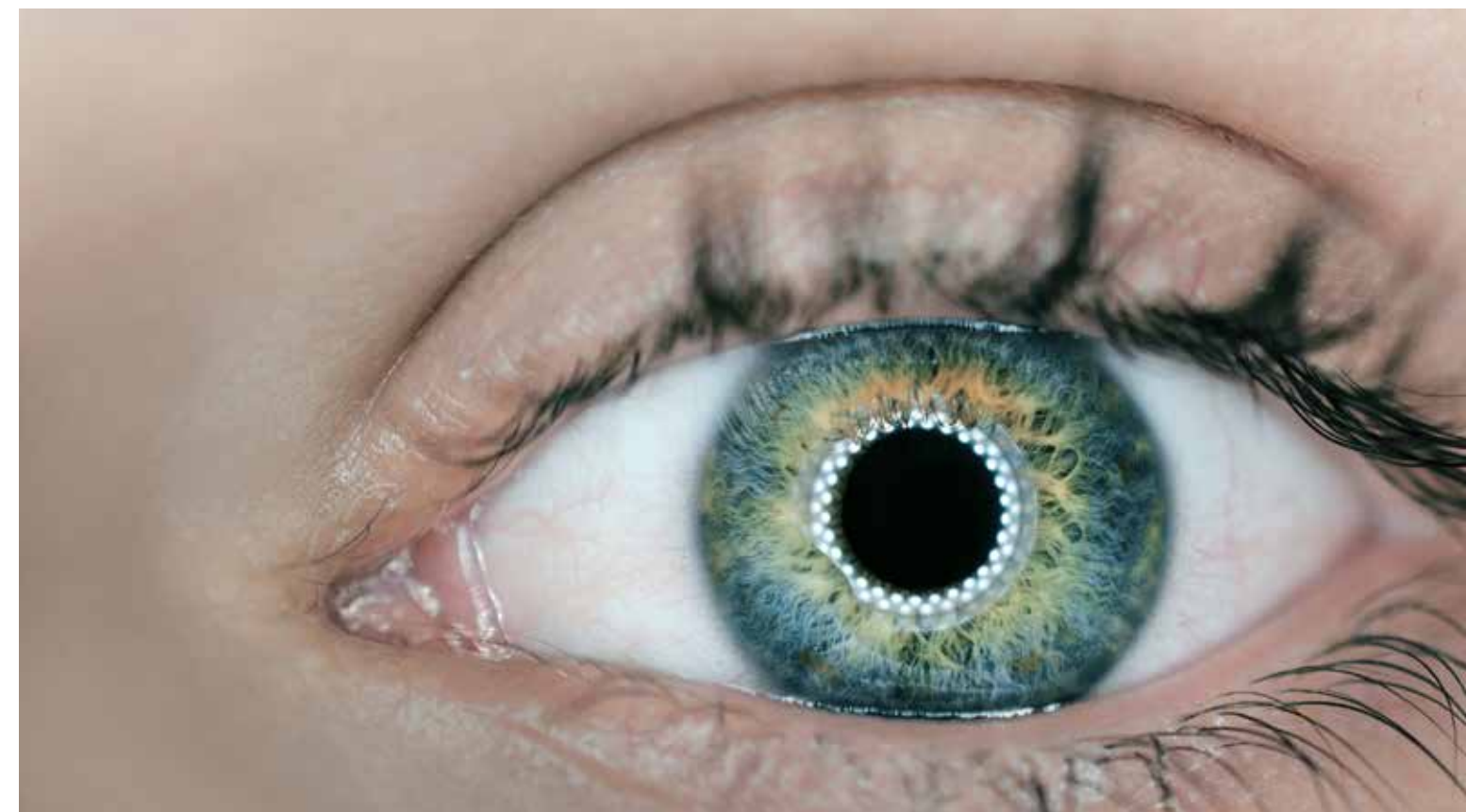
- Goldmann Kinetic Perimetry testing
- Full-field Static Perimetry (White/White)
- SWAP, Flicker, and Red/White low vision testing
- Threshold testing in just 2-4 minutes
- True fixation control and digital eye tracking
- Ability to import your old HFA examination records and database
- EyeSuite Glaucoma Analysis



### OCTOPUS 600

For both early detection of Glaucoma and long-term follow-up, the Octopus 600 incorporates:

- PULSAR testing method for proven early detection of glaucoma
- Standard White/White perimetry
- Ergonomic design with compact footprint
- Threshold testing in just 2-4minutes
- Colour touch screen operation
- Includes magnetic trial lenses stored in hideaway side compartments





### IM-900 / IM-600

- Integrated anterior segment imaging solutions.
- High sensitivity CCD sensor
  - Depth of field control on IM-900 model
  - RM-02 remote trigger module for ease of use



### FUNDUS MODULE FM-300

The impressive simplicity of the Fundus Module FM-300 allows integration of non-mydratic retinal imaging as part of the regular slit lamp examination. This can improve practice workflow and save both clinical and patient time. When utilising the Haag-Streit RM-02, capture and illumination controls are conveniently placed in front of the joystick on the slit lamp control panel.



### AT 900 APPLANATION TONOMETER

The AT 900 Goldmann tonometer comes in several different models with a comprehensive range of accessories. Each tonometer attaches to the slit lamp and pivots in front of the microscope for easy examination, with observation of the applanated surface conducted monocularly.

Disposable tonometer prisms (such as Tonosafe™) or reusable Goldmann measuring prisms can be used with all Haag-Streit tonometers



### TONOSAFE

Tonosafe are designed for single-use, without compromising the performance of Goldmann Applanation Tonometers. Reduces the risk of cross infection between patients and improves productivity by freeing doctors and nurses to focus on productive and important tasks.

- Easy-to-use; Tonosafe saves you more time by eliminating the sterilisation process
- Improves safety; Single-use eliminates the risk of cross-infection
- Cost effective – in comparison to disinfection of reusable prisms



### BQ-900

The BQ-900 represents excellent optics, versatility and ease of use. It is the standard for anyone requiring advanced slit lamp microscopy.

- Homogeneous LED illumination
- 5-step magnification up to 40x
- 14mm Slit illumination
- IM-900 imaging module option
- Options include: inclined eye adapter and yellow enhancing contrast filter for superior fluorescein observation



### BI-900

The BI-900 providing simplified operation with proven reliability.

- Homogeneous LED illumination
- 2-step magnification 10 & 16x
- 14mm Slit illumination
- Optional BI-900 Integrated imaging module



### BP-900

The BP-900 providing exceptional optics in a 3 step modular binocular system. The perfect slit lamp choice for routine examinations.

- Homogeneous LED illumination
- 3-step magnification up to 25x
- 14mm Slit illumination
- Options include: Yellow enhancing contrast filter for superior fluorescein observation
- IM-600/900 Integrated imaging module option



### BA-904 HAND-HELD SLIT LAMP

A dual function slit lamp, the BA-904's ergonomic design enables both handheld examinations and traditional-style examinations, using the easy-to-assemble head and chin rest. The BA-904 slit lamp can provide high-quality examinations to examine patients who cannot comfortably sit at a larger slit lamp or perform in-field based eye examinations. Supplied in a durable and robust carry case.





## HS HI-R NEO 900

The Hi-R NEO 900 is our premier microscope for ophthalmology, available as a ceiling mount unit or standard floor stand in LED (or traditional halogen) with electromagnetic balancing and locking. It allows excellent judgement and treatment with outstanding depth perception and 3-dimensional vision (due to its 25mm stereo base).

### The standard microscope features include:

- 200° inclinable eyepiece head
- C.RED 900 integrated red reflex adjustable enhancer
- Filter selection (UV, Softlight, Daylight and Blue)
- X-Y Coupling
- Motorised zoom and focus
- Inclination of microscope head (-70° to +90°)
- Wireless 14 function foot pedal

### It's multi-modular capabilities offer a range of options, which include:

- iOCT-Live scan views for posterior and anterior through binocular image injection
- Assistants Eyepiece - 0 degree with full stereoscopic vision with independent focus and magnification
- EIBOS 2 VR attachment
- C-INJECT image injection system
- C.MOR HD Camera
- MIO55 HD Imaging Recording System

## HS ALLEGRA 900

The Allegra 900 is designed for ophthalmology, available as a ceiling mount unit or standard floor stand in LED (or traditional halogen) with electromagnetic or mechanical balancing and locking. It allows excellent judgement and treatment with outstanding depth perception and 3-dimensional vision (due to its 25mm stereo base).

### The standard microscope features include:

- 160° Inclinable eyepiece head
- Fixed red reflex enhancer
- Filter selection (UV, Softlight, Daylight and Blue)
- X-Y Coupling
- Motorised zoom and focus
- Inclination of microscope head (-8° to +100°)
- 14 Function wireless foot pedal

### It's multi-modular capabilities offer a range of options, which include:

- EIBOS 2 VR attachment
- C.MOR HD Camera
- MIO55 HD Imaging Recording System



## HS HI-R NEO 900A NIR

The Hi-R NEO 900A NIR is our premier iOCT microscope for ophthalmology for anterior and posterior surgeries. It is available as a ceiling mount unit or floor stand, with LED illumination and electromagnetic balancing and locking. It allows excellent judgement and treatment with outstanding depth perception and 3-dimensional vision (due to its 25mm stereo base).

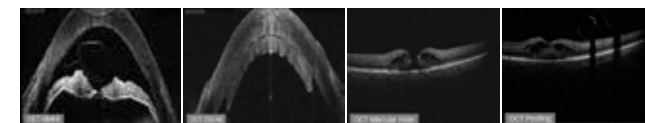
HS iOCT is a system with three visualisations: an image injection binocular into the oculars of the surgeon (C.INJECT), a display close to the oculars (M.DIS) and a large display for the OR team (C.MON).

Easy to shift and rotate the scan line in the field of view, individual contrast, gamma and brightness settings, independent iOCT magnification and digital zoom settings, capturing of 3D volume scans, adaptive iOCT focus.

HS iOCT offers: OCT video, OCT snapshot and 3D volume scan, and via the M.REC.2 on the MIO5 system simultaneous recording of microscope video and iOCT video.

### The standard iOCT microscope include all the features of the Hi-R NEO 900 plus:

- iOCT-Live scan views for posterior and anterior through binocular image injection
- EIBOS 2 VR attachment
- C-INJECT image injection system
- C.MOR HD Camera
- MIO55 HD Imaging Recording System



## HS ALLEGRA 90

The Allegra 90 is designed for ophthalmology and is available as a floor stand in LED or halogen with mechanical balancing and locking. It allows excellent judgement and treatment with outstanding depth perception and 3-dimensional vision (due to its 25mm stereo base).

### The standard microscope features include:

- 160° Inclinable eyepiece head
- Fixed red reflex enhancer
- Filter selection (UV, Softlight, Daylight and Blue)

### It's multi-modular capabilities offer a range of options, which include:

- EIBOS 2 VR attachment
- C.MOR HD Camera
- MIO55 HD Imaging Recording System
- X-Y Coupling







### LACRYDIAG™

- Ocular Surface Analyser - Complete Diagnosis of Dry Eye
- Interferometry, Tear Meniscus, N.I.B.U.T, Meibography
- Adaptable to slit lamp, or stand-alone



### LACRYSTIM™

- IPL Treatment for MGD, Blepharitis and Rosacea
- Simple & fast treatment (<5 min) with clinical results including an improvement of tear film quality
- Treatment on all skin types (up to phototype VI)
- Water cooled hand-piece provides longer lasting flashlamp, no energy loss from first to last shot, and only requires a thin layer of gel



### COMPACT TOUCH 2

A compact ultrasound platform that provides options for A-scan, B-scan, and Pachymetry. The latest generation B-scan 15MHz probe with a 30% increased resolution provides exceptional image quality. The Optional A-scan probe features high accuracy axial length measurement and IOL calculation function. Powerful and intuitive software is backed with DICOM for EMR capability, Wifi and Bluetooth connectivity.



### ABSOLU

A world of possibilities with A / B / S / UBM ultrasound platform. 20MHZ B-scan probe featuring Annular Five Ring Technology provides an improved depth of view (increased by 70%), and exceptional resolution (increased by 27%). An integrated motion sensor is featured in the B15, B20 and UBM probes, providing real-time information of the position of the probe and the direction of the ultrasound beam. With a redesigned user interface & the large colour touch screen, the system is extremely easy to use. Powerful and intuitive software is backed with DICOM for EMR capability, Wifi and Bluetooth connectivity.





### Axis Nano

- Compact, portable A-Scan Ultrasound Biometer, weighs just 125gm
- High accuracy Axial Length measurement and IOL calculation function
- Easy to use with intuitive interface, and customisable surgeons preferences
- The optional ProBeam biometer probe provides a patient fixation point via its built-in laser pointer which permits automatic focusing on the visual axis



### vitra 2

Quantel Medical re-invents its flagship VITRA 532nm Green photocoagulator. Now available in either SingleSpot or MultiSpot Laser delivery system compatible with any style slit lamp, it offers a wide array of parameters tailored to the treatment of retinal pathologies. With the latest generation of Laser Cavity & customisable treatment settings via the clinically oriented software the Vitra 2 offers enhanced Treatment speed and precision.



### optimis II

The Optimis II is a 1064nm Nd:YAG Laser integrated into a premium diagnostic slit lamp. Highly efficient, powerful and reliable, this advanced YAG technology incorporates a precise two-point aiming system with an adjustable posterior offset. The Optimis II combines premium optics and a powerful laser cavity to provide optimum photodisruption for capsulotomy and iridotomy procedures.



### SoLuTis

SoLuTis is a Q-switched 532nm SLT Laser that adapts to any Haag-Streit style slit lamp. Utilising fixed parameters of a large spot size (400µm) and an extremely short pulse duration (4ns) avoids any thermal spread to the adjacent tissue. The SLT's premium optical components deliver even distribution across the diameter of the spot which avoids damaging the trabecular meshwork. Transportable via the robust carrying case, the Solutis can be moved from clinic to clinic, or shared between practice locations.



### vitra 810

Based on the same sleek characteristics of the VITRA 2, Quantel Medical have adapted the 810nm wavelength laser cavity for SubLiminal Cyclophotocoagulation ('SubCyclo') treatment of glaucoma. Connecting to the Quantel Medical SubCyclo probe, it is possible to perform transcleral stimulation of the ciliary body and the uveoscleral pathway. Vitra 810's SubLiminal technology utilises a train of extremely short microsecond pulses which allows precise management of the thermal effect on targeted areas.



### vitra probes

A complete range of the latest generation laser probes are available in a range of sizes with Straight, Curved, or Steerable tips. Compatible not only with Quantel Medical's Vitra & Supra Laser, these laser probes also have compatibility with a range of other manufacturer laser consoles.



### optimis FUSION

Integrated YAG/SLT platform, the Optimis Fusion combines traditional YAG photodisruption treatments and advanced SLT photoregeneration therapy in one integrated slit lamp delivery system. A small footprint for two powerful technologies. The advanced dual-mode laser cavity is optimised to produce two wavelengths from one cavity, whilst the ergonomic design allows the user to easily switch between YAG and SLT mode. With a provision to adapt the VITRA console, the Optimis Fusion is an expandable platform, ready to become your Glaucoma, Cataract and Retinal Laser all-in-one slit lamp station.



### easyret

EasyRet is a fully integrated 577nm Yellow photocoagulator based on a technological breakthrough; Fiber Laser Technology which provides a uniform laser spot profile and an extended lifetime (backed by Quantel's 5 year warranty). Adopting a Pure Yellow laser wavelength of 577nm, the Easyret offers Single Spot, MultiSpot and Sub-Liminal treatment modes. The EasyRet also features a clinically oriented user interface featuring software-guided treatment procedures, and as a fully integrated slit lamp delivery system is available in either Zeiss or Haag-Streit style slit lamp configurations.





**AP-50**

AP-50 is a desktop, lightweight and fully featured modern static automated perimeter ideal for glaucoma diagnosis and specific requirements of occupational medicine and busy mobile clinicians.

- LED back projection of stimulus in white colour
- Offers a wide range of strategies, test fields and test parameters
- Digital Camera for Fixation control
- Connect to an external PC with windows



**AP-250/AP-250BY**

AP-250 and AP-250BY are fully functional static, back LED projection, automated perimeters with a full field measurement. AP-250 and AP-250BY use green colour LED projection of stimulus in Goldman size III.

- Optional AP-250BY for SWAP perimetry
- Offers a wide range of strategies, test fields and test parameters
- Digital Camera for Fixation control
- Connect to an external PC with windows

**AP-300 AUTOMATED PERIMETER**

Completely integrated all-in-one perimeter, with in-built computer and swivel colour touch screen.

- Kinetic & Static Perimetry including
  - Standard White on White
  - Blue / Yellow (SWAP)
  - Flicker (Critical Flicker Fusion Perimetry)
  - Estermann Binocular driving test
- Wide-range of strategies, fields and test parameters
- Built-in camera provides automatic control of patients fixation
- Comprehensive data analysis with VF regression and customisable
- Small foot-print with integrated colour touch-screen PC



**SL-100**

Frey's turret-style slit lamp with 5x step magnification and LED illumination. European-manufactured high-quality optics provide stunning image quality and resolution. Yellow contrast enhancing filter as standard, digital camera ready (Sli-200 optional).



**SLI-200**

Digital Imaging system purpose built for seamless integration with the SL-100 Slit Lamp. Fully integrated design which does not require an external PC for connection. In-built 5 inch colour touch screen with 128Gb internal storage capacity for images and video.



**CP-400**

CP-400 is a premium visual acuity device offering test capabilities above standards known from use of chart projectors.

The device provides many additional features like low vision AMD optotypes, video playback capability, test reporting, spatial frequency and colour contrasting testing.

- 24" LED LCD Visual Acuity Screen
- 2.9m to 6.1m refraction distance
- Customisable test programs and print-out reports
- Full integrated, stand-alone device with IR remote control



**CP-600P**

CP-600P is a Premium Visual Acuity LCD screen with a wide range of test capabilities, including Polarisation tests. Additionally, it allows the practitioner to test their patients ability to recognise contrast and validate their colour recognition.

- 24" LED LCD Acuity Screen
- Fully Integrated unit
- IR remote Control



**I-OPS**

Instruments within easy reach. I-OPS is an ergonomically optimised Instrument Delivery System that allows physicians to perform intravitreal injections and other minor in-office procedures more efficiently. I-OPS eliminates wasted movements, saving time and improving patient flow as well as patient comfort.



**7900 CONSOLE**

The sleek design of the 7900 console is ideal for limited spaces and allows for maximum patient accessibility, including wheelchair patients.

- Compact design is ideal for limited space
- Counterbalanced slit lamp arm
- Available with optional charging wells
- Can be integrated with Reliance chair
- Overhead lamp and refractor arm option



**520**

The 520 chair is a durable chair in a contemporary design.

- Manual pneumatic tilt recline examination chair
- Armrests rotate upwards for ease of access
- Hinged footrest
- Wide range of upholstery colours available



**6200**

Powered height-adjustable Examination Chair with manual assisted-recline. The power hydraulic lift mechanism raises and lowers the patient comfortably. The recline handle, which can be accessed from both sides, activates the counter-balance mechanism to easily recline the chair to table position.



**PRACTITIONER STOOLS**

Reliance manufacture a range of practioner stools designed for their durability and functionality in a clinical environment.

- 4300/ 5300 range of Manual pneumatic stools, ideal for consult rooms
- 500 Series with hydraulic pump lift, ideal for surgical environments
- Durable five legged cast base
- Available in a variety of designs and backrest options
- Wide range of optional upholstery colours available



**3000**

Patient examination chair with foot-pump hydraulic base, and manual recline backrest to 90 degrees. The fixed footrest and armrests provide patient stability, while the 360° chair swivel and rotating armrests allow the patient easy access to the sitting position.

**FX-920/FXM-920**

Make the most of your space! FX chairs tilt over the baseplate axis, providing the ability to recline without the need to sacrifice additional floor space. Powered height-adjustable Examination Chair either with manual assisted (FXM-920) or full-powered (FX-920) recline. Patient posture remains in seated position.





**7000**

The 7000 chair is a versatile and durable procedure chair ideal for anyone needing to recline patients during examinations.

- Full power articulating examination chair/minor procedure table
- Memory positioning switch enables pre-selection of chair's most used position
- Safety switch prevents small children from operating chair
- Choice of headrests
- Dual side controls & membrane switches control operation of the Hydraulic base tested to 270kg
- Auto-return button returns the chair to the upright position
- Armrests lock in to place. Release mechanism allows patients to sit or leave from either side



**980**

Reliance's premium full-powered exam/procedure chair - The ultimate procedure chair for convenience, durability and patient comfort. Extreme capacity achieved via the hydraulic base tested to over 270kg. Backlit controls on both sides, and an optional foot switch for complete control from any position.

- Rotation locks allows you to swivel the chair 330 degrees from both sides
- 6 different headrest options, including a fully articulating or sliding pillow
- 14 standard colours and many more custom colours to choose from



**710**

Procedure chair featuring a rounded base, allowing the surgeon to move closer to the procedure zone. Fully-powered height adjustment and recline, with dual-side rotation locks, the 710 is ideal for examinations and minor procedures.





## DIAGNOSTIC KIT

German-made, premium hand-held diagnostic instruments.

- LED Ophthalmoscope with precision optics and a Lifetime Dust-proof guarantee
- LED Retinoscope – a homogenous and bright light for a fast, precise diagnosis
- USB rechargeable handles OR
- Desktop charging station
- Optional transilluminator head



## EL-10 EXAMINATION LIGHT

LED Examination Light ideal for in-room procedures, featuring a compact design and an intuitive one-hand operation. Coiled Goose-neck design allows the practitioner to position the light precisely, as required.

- Adjustable spot size (between 85mm to 140mm)
- Adjustable Light Intensity (between 6500 and 45,000 Lux)
- Optional floor stand with lockable castors



## OMEGA 500 UNPLUGGED

Binocular Indirect Ophthalmoscope with LED illumination.

- Mounted on a comfortable, adjustable headband
- mPack UNPLUGGED for a wire-free examination
- In-built filters (4x), and apertures (x4), with synchronised pupil adjustment
- Optional DV1 Digital Video Camera



## ML4 LED HEADLIGHT

LED Headlight specifically designed for healthcare professionals who need a clear view during long surgical treatments or operations. The headband of the ML4 offers multiple adjustment points and soft padding to ensure a comfortable, firm fit.

- Adjustable spot size
- Shadow free illumination
- Optional Wireless UNPLUGGED battery pack, or standard waistband mPack battery



## SIGMA 250 LED

Binocular Indirect Ophthalmoscope with LED illumination.

- Spec mounted on the Heine S-Frame with adjustable/removable neck cord
- mPack mini battery transformer provides a lightweight power source, convenient illumination adjustment
- In-Built filters (2x), and apertures (2x) and small-pupil adjustment



## BINOCULAR LOUPES

HR Binocular Loupes with either 2x or 2.5x and your choice of 3 working distances; 340mm, 420mm and 520mm.

- Crisp, high resolution image through quality German made optics
- Multi-coated, achromatic optics provide a large field of view
- Homogenous magnification with great depth of field.
- Dust and water resistant
- Optional LoupeLight 2 LED light source



**DIAMOND 20D**

This reusable 20D lens provides an image magnification of 3.0x and a 53° field of view.



**DIAMOND 28D**

This reusable 28D lens provides an image magnification of 2.1x and a 53° field of view.



**DIAMOND 60D**

This reusable 60D lens provides an image magnification of 0.96x and a 68° field of view.



**DIAMOND 78D**

This reusable 78D lens provides an image magnification of 0.77x and a 80° field of view.



**DIAMOND 90D**

This reusable 90D lens provides an image magnification of 0.64x and a 75° field of view.



**DIAMOND 3 MIRROR**

A diagnostic lens with four 64° mirrors for efficient visualisation of the angle with minimal lens manipulation and a central optic for viewing the posterior pole. Image magnification of 0.8x.



**DIAMOND 4 MIRROR**

This reusable 90D lens provides an image magnification of 0.64x and a 75° field of view.



**SINGLE LENS**

A lens for diagnostic, surgical and therapeutic procedures including SLT, offering an excellent view of the anterior chamber angle.



**4 MIRROR LENS**

A diagnostic lens for efficient visualisation of the angle with minimal lens manipulation and a central optic for viewing the posterior pole.



**SURGICAL GONIO PRISM**

This lens allows direct viewing of the angle during MIGS glaucoma surgery. Right hand lens for left hand dominant surgeons.



**SINGLE MIRROR LENS W/ HANDLE**

A lens with handle for diagnostic, surgical and therapeutic procedures including SLT.



**FUNDUS LENS**

This lens was designed to provide a central magnified view for observation of the macula and optic nerve head area.



**CAPSULOTOMY LENS**

This lens was designed to provide a central magnified view for observation of the macula and optic nerve head area.



**IRIDOTOMY LENS**

Designed with a large diameter optic to view/treat structures of the peripheral iris.





**E3 DESKTOP**

A versatile, desktop visual electrophysiology system that can support a complete assortment of Visual Electrophysiology test modalities including ERG, VEP, EOG, Pupillometry and psychophysical tests.



**PATTERN PROFILE CART**

Cart-mounted system capable of acquiring data and driving pattern generators and Multifocal.

- Both eyes tested simultaneously
- Superb signal-to-noise ratio permits use of DTL electrodes
- Refractive correction available
- Optional eye-tracking camera monitors fixation



**GANZFELD PROFILE CART**

Cart-mounted system capable of acquiring data and driving handheld and desktop ganzfelds (ColorBurst/ColorDome).



**CELERIS RODENT TESTING DEVICE**

A high-throughput solution to rodent-based research, Full-Field and Pattern Stimulation for the rodent model. All it takes to set up a mouse is to place an electrode-stimulator directly onto the surface of the eye-thanks to the patent-pending combined electrode and stimulator.



**ENVOY**

Monocular Pattern Stimulus for pERG and pVEP. Miniature OLED monitor for Macula, Ganglion Cell, and Optic Nerve Testing.



**COLORBURST**

Monocular Flash Stimulus made handheld to produce ffERG and Flash VEP, ideal for pediatrics.



**COLORDOME**

Binocular Flash Stimulus used for ffERG, EOG, Flash VEP; compatible with all Add-On Modules (FST, DA, Pupillometry).



**LCD MONITOR**

Binocular Pattern Stimulus for wide-screen mfERG and pVEP.



**DTL PLUS ELECTRODES**

Single-use, highly conductive fibre corneal electrode for ERG testing. Low-impedance, medical grade silver/nylon electrode.

- Sterile / Single-Use





**TRIAL FRAME TF-3**

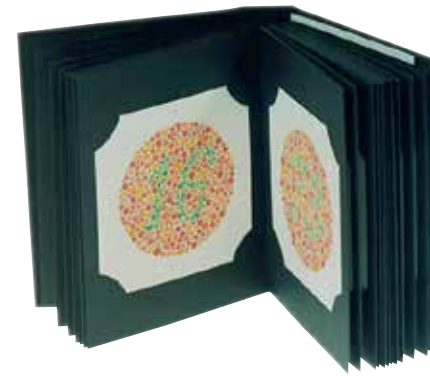
Lightweight Trial Frame, the Reichert Trial Frame provides a comfortable fit and smooth controls for quick, easy lens fitting. The robust design, high-quality materials, and precision assembly ensure years of trouble-free use.



**TRIAL LENS SET**

Robust and Reliable Lens Set

- Full-view lenses with polished metal rims
- Robust materials and quality craftsmanship for years of reliable performance
- Elegant carrying case



**ISHIHARRA COLOUR TEST BOOK**

Ishiharra 24 Plate Colour Test Book



**RETINOSCOPY RACK**

2 racks containing acrylic lenses from +/- 0.5 Diopters to +/-15 Diopters. Comes with protective sheath.



**TONOPEN XL**

Easy-to-use applanation tonometer is an easy-to-use, handheld instrument that provides IOP readings that correlate closely with Goldmann Tonometry. Tono-Pen XL's lightweight ergonomic design and advanced electronic measurement technology enable operators to take fast and accurate IOP measurement with minimal training.



**TONOPEN AVIA**

The Hand-held Tonometer provides fast & reliable IOP measurements.

- Ergonomic design, with dual-side LCD screen displays
- Comes with long-life battery and hard transport case



**CARDBOARD LETTER CHARTS**

A complete range of Cardboard Letter Charts including Kay Picture tests



**STEREO FLY TEST BOOKS**

Stereo Test Fly / Butterfly, Random Dot E. Supplied with glasses.



**TONOPEN TIP COVERS**

Genuine brand Ocu-Film + Tip Covers protect your Tono-Pen tonometers from dust and fluids, and helps protect patients from the risks of cross contamination. Available as sterile individually wrapped, or bulk box of 600.



**IPAC PACHYETER**

Intuitive hand-held pachymeter for efficient CCT measurements.

- One-button navigation & rotating colour LCD screen
- Comes with charging dock cradle, and hard transport case

**EXPRESS FORMS**

A Quick and Easy way to order consumables such as Globes, Test Strips, Chin-rest Papers, and Punctal Plugs. Contact your Device Technologies representative to obtain your customised Express Order Form today.

1300 338 423  
customers@device.com.au



Get social with Device Technologies:



@devicetechnologies



@devicetech



@devicetechnologies



☎ 1300 DEVICE (338 423)

✉ customers@device.com.au

🌐 device.com.au