

**Axcent Large**  
LED wall mount luminaire

**Lumark**



*Powering Business Worldwide*

**Sleek architectural design  
with superior performance.**

The all-in-one solution  
for outdoor lighting.

The Axcent Large LED wall mount luminaire delivers value through superior performance, reliability, mounting versatility, and multiple control solutions all in a sleek, architectural style. This innovative, patent-pending LED luminaire provides high performing, energy efficient illumination resulting in up to 88 percent energy and maintenance savings. The die-cast aluminum construction along with stainless steel hardware, gasketed housing, and sealed optical compartment make the Axcent Large impervious to contaminants. The Axcent Large luminaire is ideal for pathway illumination, building entrances, vehicle ramps, schools, tunnels, stairways, loading docks and floodlighting applications.

The Axcent Large deploys great efficiencies and uniformity in both full cutoff and refractive lens designs. Versatile mounting options available for wall, inverted, floodlight (slipfitter and trunnion), and pole-mount applications. The Axcent Large also provides expansive controllability and connectivity to meet energy codes with maximum energy savings. With lumen packages ranging from 6,619 to 17,346 lumens, the Axcent Large wall mount is the ideal solution for replacing legacy metal halide solutions ranging from 320 up to 450 watts.

The innovative Axcent Large wall mount delivers a broad selection of solutions with superior illumination, reliability, ease of installation, control ability, and application versatility. Eaton’s Axcent Large is an excellent choice providing value and performance for all of your outdoor lighting applications.







# Combining versatility and value.

## Superior illumination

The Axcent Large wall mount luminaire combines the latest premium LED technology of high efficiency, discrete LEDs for enhanced uniformity and high-precision engineered optics in a low profile, cost-effective design. The Axcent Large is offered in full cutoff and refractive lens models to accommodate different light distribution requirements. Full cutoff models integrate a molded lens assembly for Dark Sky compliance. Refractive lens models incorporate a molded lens assembly designed for maximum forward throw. The Axcent Large is available in cool 5000K, neutral 4000K, and warm 3000K color temperatures. With lumen packages ranging from 6,619 to 17,346 lumens, the Axcent Large is the ideal solution for your outdoor lighting needs.

## Reliability and long life

The innovative housing design enables all features to be fully integrated into a single housing to ensure a fully sealed unit for protection against outdoor environments. The rugged, die-cast aluminum housing is IP66 rated, UL wet location listed, and 3G vibration rated for exceptional durability and long-term reliability in -40°C to 40°C applications. With lumen maintenance of greater than 94 percent, the Axcent Large is virtually maintenance free for over 32 years.

## Ease of installation

The Axcent Large is built with multiple contractor-friendly installation features. The luminaire comes with a steel wedge mounting plate with integrated bubble level that adapts directly to the wall or j-box. The pre-installed wire hook allows the luminaire to hang while you make your electrical connections. No need to open the factory-sealed and vacuum tested housing, simply “Hook-N-Lock” to attach the luminaire to the mounting plate and secure with the two set screws. The simple “Hook-N-Lock” mechanism on the back of the Axcent allows for installation of the luminaire without requiring any additional caulking or silicone.









# Multiple control options to maximize energy savings.

Designed to be a simple solution  
to complex problems.

The Axcent Large seamlessly integrates the luminaire’s standard 0-10V dimming driver with optional integrated and advanced controls to provide additional energy savings by reducing unnecessary light levels and power consumption. Many of these options comply with California Title 24 and ASHRAE provisions.



**LumaWatt Pro** (Wireless Connected Lighting System powered by Enlighted)  
LumaWatt Pro transforms a lighting system into an IoT infrastructure with limitless potential to keep up with the growing service demands of people, property and resources. LumaWatt Pro is a distributed network of smart LED lighting fixtures with integrated sensing and beacon technology that enables the ability to control the lighting through remote control, zoning, and scheduling for advanced energy management and data analytics.



**Integrated sensor**  
Capture the benefits of traditional lighting controls. The Integrated sensor delivers additional energy savings by ensuring lighting is turned off or dimmed when a space is unoccupied. The integrated photocell adds an additional level of “dusk-to-dawn” control through daylight sensing and harvesting.



**Button photocontrol**  
The optional button type photocontrol provides a simple solution to enable “dusk-to-dawn” lighting by sensing light levels.

**After hours dim**  
This feature allows photocontrol-enabled luminaires to achieve additional energy savings by dimming during scheduled portions of the night. The dimming profile will automatically take effect after a “dusk-to-dawn” period has been calculated from the photocontrol input.





Performance features

Performance summary
<b>Lumens:</b> 6,619 / 17,346
<b>Wattage:</b> 56W / 72W / 102W / 123W
<b>Efficacy:</b> Up to 141 lm/W
<b>CRI/CCT:</b> 70 / 4000K (Standard), 70 / 5000K, 80 / 3000K

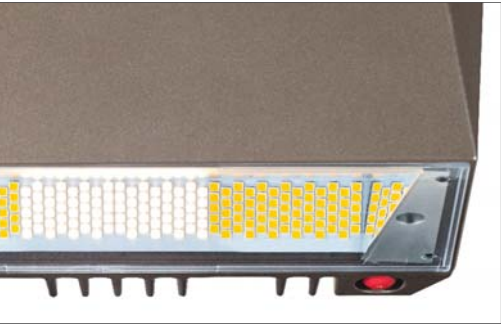
Electrical data (Electronic LED driver)
<b>Power Factor:</b> >0.9
<b>Total Harmonic Distortion:</b> <20%
<b>Minimum Temperature:</b> -40°C
<b>Ambient Temperature Rating:</b> 40°C (50°C optional)
<b>Operation:</b> 120-277V 50/60Hz, 347V 60Hz, 480V 60Hz
<b>Controls:</b> 0-10V dimming (Standard), Button photocontrol, Integrated sensor, LumaWatt Pro, After hours dimming
<b>Surge Protection:</b> 6kV inherent in driver (10kV/10kA surge protection optional)

Additional information
<b>Warranty:</b> 5 year
<b>Vibration Tested:</b> 3G
<b>UL/cUL Listed:</b> Wet location
<b>IP66 Rated:</b> Yes
<b>LM79/LM80:</b> L94 at 72,000 hours (25°C)
<b>RoHS:</b> Compliant
<b>EPA:</b> 1.1 (Pole mount)
<b>Approximate Net Weight:</b> 12 - 21 lbs. (5.4 - 9.5 kgs.)

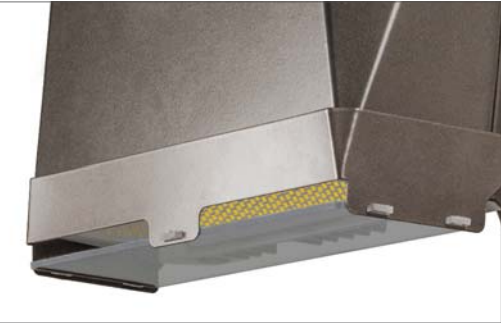
Energy and maintenance savings
<b>Annual savings:</b> Up to 88%

NOTE: Product specifications subject to change without notice. Visit [www.eaton.com/lighting](http://www.eaton.com/lighting) to find the most up to date information.

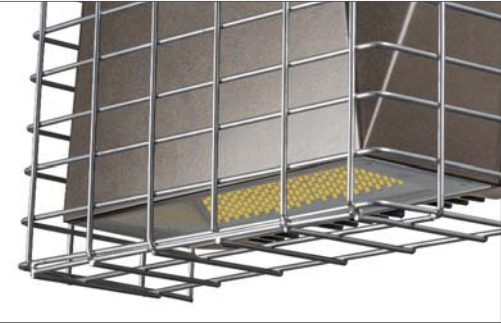
Options and accessories



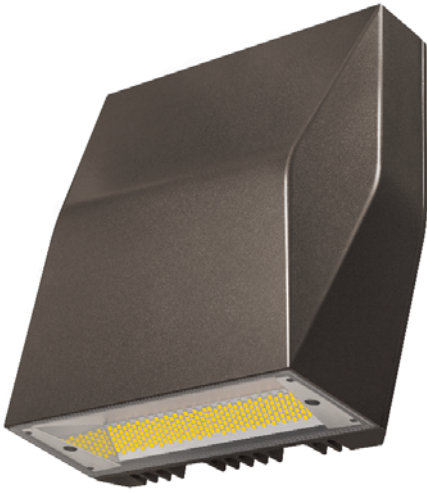
Emergency egress



Vandal shield



Wire guard

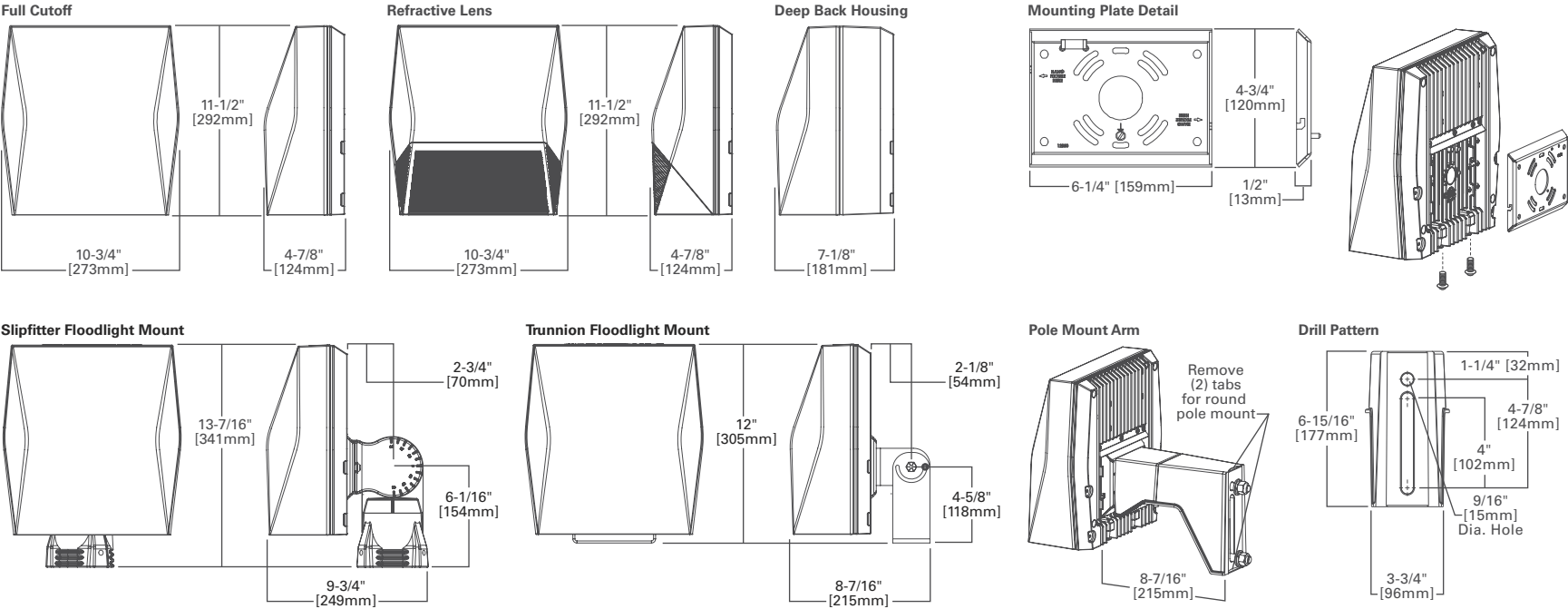


Full cutoff



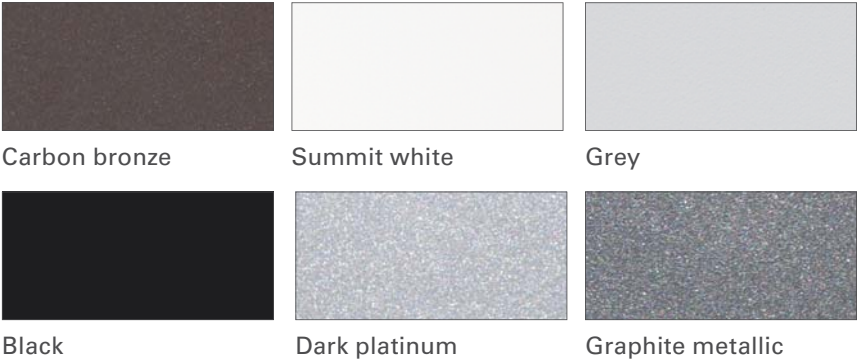
Refractive lens

Dimensions



Finish selection

Five-stage super TGIC paint resists extreme weather conditions, while providing optimal color and gloss retention.



NOTE: Carbon bronze is standard on stock configurations. Eaton utilizes premium ultra-weatherable TGIC based polyester powder coatings that are specifically formulated to withstand extended outdoor exposure. Consult you lighting representative at Eaton for more information on RAL and custom color matching. Colors and textures have been matched as close as possible. Paper and ink limitations, as well as the influence of heat and light, account for differences from actual coatings. Product specifications subject to change without notice. Consult your lighting representative at Eaton for more information, or visit [www.eaton.com/lighting](http://www.eaton.com/lighting) to find the most up to date information.

## Lighting Product Lines

Halo  
Halo Commercial  
Portfolio  
Iris  
RSA  
Metalux  
Corelite  
Neo-Ray  
Fail-Safe  
MWS  
Ametrix  
Shaper  
io  
Lumark  
McGraw-Edison  
Invue  
Ephesus  
Lumière  
Streetworks  
AtLite  
Sure-Lites

## Controls Product Lines

Greengate  
iLumin  
Zero 88  
Fifth Light Technology  
iLight (International Only)

## Connected Lighting Systems

LumaWatt Pro  
WaveLinx  
Distributed Low-Voltage Power  
ConnectWorks



### Eaton

1121 Highway 74 South  
Peachtree City, GA 30269  
P: 770-486-4800  
[www.eaton.com/lighting](http://www.eaton.com/lighting)

### Canada Sales

5925 McLaughlin Road  
Mississauga, Ontario L5R 1B8  
P: 905-501-3000  
F: 905-501-3172

© 2018 Eaton  
All Rights Reserved  
Printed in USA  
Publication No. BR514004EN  
February 2018

Eaton is a registered trademark.

All other trademarks are property of their respective owners.

Product availability, specifications, and compliances are subject to change without notice.