

RTC

Recessed LED center basket

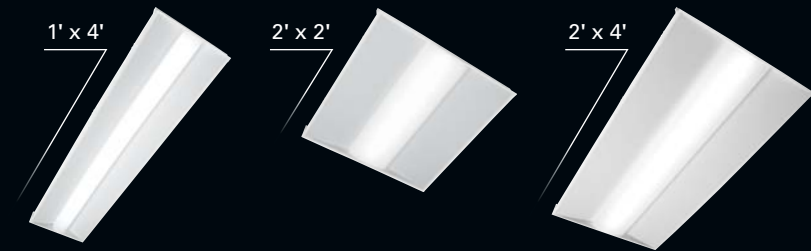
 **Metalux**



EATON

Powering Business Worldwide

RTC Recessed LED center basket



The RTC lensed troffer series provides performance, reliability and flexibility with a housing optimized for shallow plenums. Developed with Eaton's latest generation of solid-state components and electronic driver technologies, these center illuminated troffers provide numerous options for color, lumens, controls and sensing. Designed to be compatible with popular ceiling systems, the RTC troffers are ideal for both new construction and remodel/replacement of fluorescent troffers in commercial office spaces, schools, healthcare facilities, and retail merchandising areas.

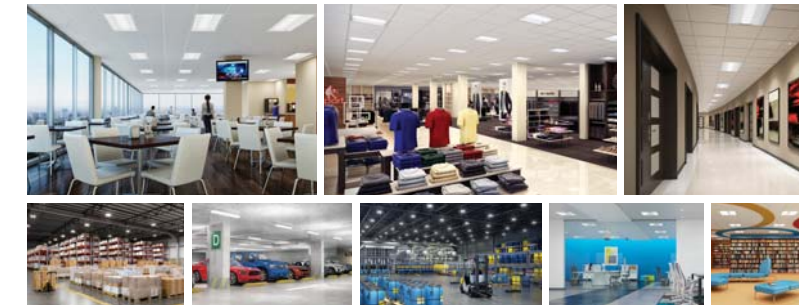
Low profile perfect for renovation or new construction

Contractor friendly, quick and easy install

No maintenance required

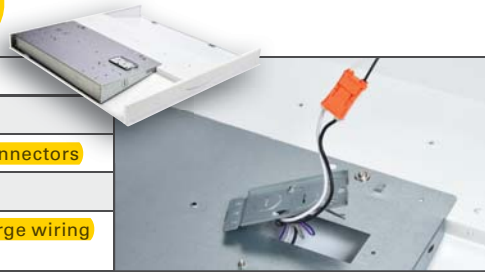
Center basket appeal, prismatic troffer value

Buy with confidence - proven Metalux quality



Durable construction

- Uniform body, strong cold rolled steel
- Impact-resistant polycarbonate lens
- Fast install with easy wiring access and plug-in wire connectors
- T-grid clips included
- Standard access plate with trade-size knockouts and large wiring compartment



Architectural appeal

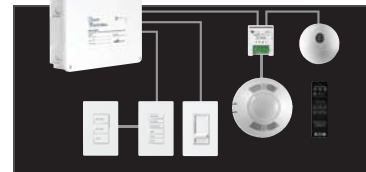
- Advanced optical control with linear prisms for uniform light distribution
- Matte white post-fabrication painted from corner to corner
- Selective binning to ensure color consistency
- 83 CRI with 3500K and 4000K



Features and benefits



- Low profile
- Perfect for shallow/restricted plenums



- Lutron and DALI options with UL 924 Emergency options
- Flexibility to meet building codes and safety requirements

Accessories



- Optional EQ clip (RTCEQ)
- Code and specification compliance



- Integrated sensors factory wired and tested
 - Simplicity - The lighting plan is the controls plan
- | | |
|---|---|
| WaveLinx
Wireless Connected Lighting System | LumaWatt Pro
Wireless Connected Lighting System |
|---|---|

Connected Lighting Systems

WaveLinx Wireless Connected Lighting System



- Adjustable occupancy sensing and daylight dimming control
- Simple, secure wireless connectivity with out-of-the-box code compliance
- Easy to use mobile application allows for fast set up and unlocks advanced control capabilities
- Detection pattern covers standard ceiling applications up to 12 feet

LumaWatt Pro Wireless Connected Lighting System powered by Enlighted



- Configurable dimming, occupancy, light, temperature and power use sensing
- Enterprise-class wireless networking with fully addressable settings
- Powerful software for energy management and Internet of Things (IoT) data capture and analytics
- Low bay detection pattern covers low- and high-ceiling applications up to 20 feet



Performance

High lumen options enable use in high ceilings
True replacement two and three lamp troffers with T8, T5 or Biax lamps
Up to 58% energy savings
System lasts over 25 years with TM21 rating of L75, 60,000 hours
Five year warranty

Energy data

Catalog No. (4000K)**	RTC		Efficiency lm/W	Popular fluorescent fixtures			Energy savings
	Lumens*	Wattts		Fixture type	Lumens*	Wattage	
24RTC4840	4775	37.8	126	Parabolic 332	5646	83.0	54%
				Troffer 232	4400	55.4	32%
				Indirect Basket 332	4583	83.7	55%
24RTC6840	6980	57.1	122	Troffer 332	6629	81.7	30%
				Troffer 432	8402	109.7	48%
22RTC3440	3523	28.6	123	Indirect Basket 2BX40	4324	68.2	58%
				Troffer 2U6T8	3862	52.1	45%
22RTC4840	4743	38.1	124	Indirect Basket 332	4583	83.7	54%
				Indirect Basket 2BX40	4324	68.2	44%
				Troffer 2U6T8	3862	52.1	27%
				Direct Dual Lens 224	2975	52.0	27%
14RTC3440	3523	28.6	123	Parabolic 2U6T8	2791	58.8	35%
				Troffer 232	4224	55.4	48%

*Lumens listed are delivered lumens.

**Also available in 3500K

Compliance and approvals



LM79 / LM80
Compliant



Lasts
25
Years



Lighting Product Lines

Halo
Halo Commercial
Portfolio
Iris
RSA
Metalux
Corelite
Neo-Ray
Fail-Safe
MWS
Ametrix
Shaper
io
Lumark
McGraw-Edison
Invue
Ephesus
Lumière
Streetworks
AtLite
Sure-Lites

Controls Product Lines

Greengate
iLumin
Zero 88
Fifth Light Technology
iLight (International Only)

Connected Lighting Systems

LumaWatt Pro
WaveLinx
Distributed Low-Voltage Power
ConnectWorks

Eaton

1121 Highway 74 South
Peachtree City, GA 30269
P: 770-486-4800
www.eaton.com/lighting

Canada Sales

5925 McLaughlin Road
Mississauga, Ontario L5R 1B8
P: 905-501-3000
F: 905-501-3172

© 2017 Eaton
All Rights Reserved
Printed in USA
Publication No. BR519032EN
September 22, 2017

Eaton is a registered trademark.

All other trademarks are property of their respective owners.

Product availability, specifications, and compliances are subject to change without notice.



Powering Business Worldwide