

## THE NEXT LEVEL IN RECORDING



THREE **DISTINCT** LEVELS

LITE | PROFESSIONAL | ELITE

TWO **PLATFORMS** LEVELS

AHD HYBRID | ULTRA HIGH DEFINITION

ONE **TRUSTED** BRAND

Concept  Pro



The home of Concept  Pro

Since 2008, the industry-renowned Concept Pro range has been bolstered by recording devices that have ranked amongst the most innovative available upon release. These past ten years have seen our recorders evolve and develop with the industry following on from regular conversations with our customers. This year, Concept Pro are revolutionising our approach to recording through the release of three new levels of recording.

After an extensive consultation process and over two years of development, we can now proudly announce The Next Level in Recording from Concept Pro, complete with the same market-leading support and service that has made Concept Pro the leading choice for installers for the last decade.

- Exclusive to Videcon
- No online price visibility
- Free UK Technical Support
- Demonstrations at your premises
- Dedicated Account Managers
- Designed with the installer in mind
- HDD Tried & Tested for 24 hours

 <b>ONE</b> Full day HDD Testing Videcon put EVERY single hard drive used in our recorders through 24 hours of testing.	<b>UK BASED TECH SUPPORT</b> <b>ONE</b> Dedicated line of support	<b>TRADE ONLY</b> <b>ONE</b> Place to access pricing online	 <b>ONE</b> Product Promise backed by our 3 Year warranty
---	---	---	--

The number  choice

## Three Levels, Two Platforms

 **Trusted Brand**

Concept  Pro

Concept Pro are delighted to announce a new approach to recording, giving installers and end users flexibility, choice and guidance when it comes to choosing the correct recorder for their system. Split into our **Elite**, **Professional** and **Lite** ranges, each individual range has been designed with adaptability in mind, allowing customers to select the appropriate recorder for the task at hand. In true Concept Pro spirit, this revolutionary set of changes is set to make life easier for system designers and installers.

## THREE DISTINCT LEVELS

*New recorder structure with options to suit all installations & budgets*

ESSENTIAL FEATURES SAME QUALITY

**LITE**



4CH | 8CH | 16CH

Competitive low-cost recording with no compromise on quality

EXTENSIVE SET OF FEATURES

**PROFESSIONAL**



4CH | 8CH | 16CH

Robust recorders with an extensive set of features

FOR HIGH CALIBRE INSTALLS

**ELITE**



8CH | 16CH

High-end recorders for the highest calibre of installs

Both platforms are built off the same brilliantly simple interface

## Concept Pro

### Analogue High Definition



- Lite, Professional and Elite
- Up to 16 channels
- Up to 5mp Support @20FPS Analogue Supported
- Hybrid - AHD, TVI, SD Analogue and IP compatible
- Up to 4K Video Output
- Secure P2P Networking & Sequirinet
- IP Hybrid Support
- Remote viewing through Internet Browser, iOS and Android devices
- Up to 50TB of storage
- Up to 18 Alarm Inputs
- Remote-monitoring ready - Immix / Sentinel
- Two Way Audio
- Dedicated Mobile App with push notifications
- Arm & Disarm
- iPims Licence Free Video Management Software

Our new Analogue High Definition recorders offer the greatest level of AHD image clarity ever available on our AHD machines, providing up to 5mp support and up to 4K Video Output on our familiar, easily-configured platform. Remote monitoring and IP Hybrid compatible, our new recorders bring added modernity to Analogue High Definition.

## Concept Pro

### Ultra High Definition



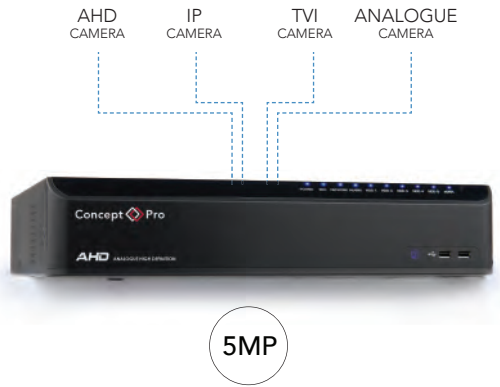
- Lite, Professional and Elite
- Up to 16 channels
- Real time recording at 8mp 4K UHD Resolution
- 4K Video Output
- H265
- Secure P2P Networking & Sequirinet
- Smart Storage Compression (SSC)
- Remote viewing through Internet Browser, iOS and Android devices
- Up to 50TB of storage
- Up to 16 physical alarm inputs
- Remote-monitoring ready - Immix / Sentinel
- Two Way Audio
- Dedicated Mobile App with push notifications
- Arm & Disarm
- iPims Licence Free Video Management Software

Ultra High Definition IP brings users the highest ever level of image clarity available from Concept Pro. With the capability to support cameras at up to 8mp and 4K UHD resolution support, our new recorders can boast detailed, clear images. Complete with H.265 and Smart Storage Compression, our UHD recording range is advanced and intelligent.

# Hybrid with up to 5MP Support

On VXH5AHD Lite, Professional & Elite Models

Hybrid Support provides users with the flexibility to use both AHD and IP on our VXH5AHD models. Ideal for pre-existing AHD installations requiring a gradual upgrade to IP, hybrid support allows users to use cameras from separate platforms using the same cabling infrastructure.

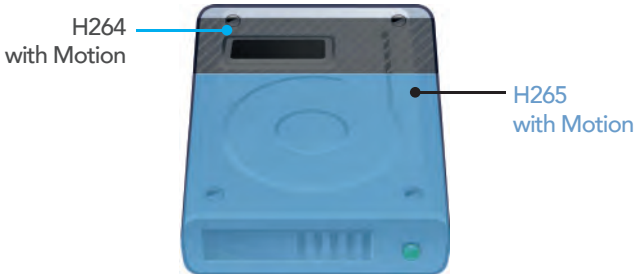


\* Configuration example applies to Professional series

# Ultra High Definition NVR with H.265

On VUHDIP Lite, Professional & Elite Models

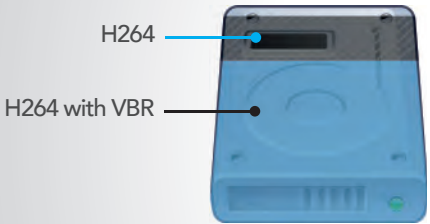
H.265 is the successor to H.264 and strives to deliver video with equivalent quality with bitrate savings of up to 50%. H.265 is critical for streaming high-quality video even in congested network environments, and will be a driving factor in the delivery of 4K content to our new Ultra High Definition machines.



## H264 v H265 COMPARISON

Using H.265/VBR (variable bit rate) can reduce bandwidth/storage requirements by 16% in average scenes with 33% motion activity compared to H.264/VBR.\*

\* Results depend upon camera model, configuration, and installation/scene.



## H264 WITH VBR UP TO 30% STORAGE COMPRESSION

The VBR on the DVRs provides around 30% reduction in storage in real life scenarios

SmartStore Compression (SSC) offers enhancement in record times on the NVRs, by improving control of streaming rates from the camera directly from the NVR itself. The camera streaming bit rate will be adjusted depending upon the recording FPS to balance storage space and image quality. This allows users of a VUHDIP system to achieve up to 30 days of constant 1080p video recording when set at 6FPS using a 16TB 16 channel system.







## ONE Brilliantly simple interface

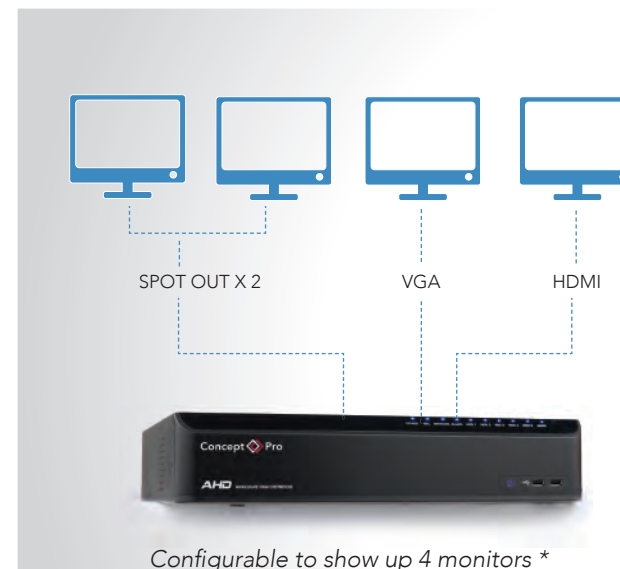


**No matter what the platform, on screen operation of Concept Pro recorders stays exactly the same**

A single brilliant GUI features on both the VXH and the VUHD, making it a seamless transition between platforms.

Users of previous models will feel instantly at home with the on-screen menus of the recorders, with the same design, layout and structure that has been refined to work perfectly in HD resolutions.

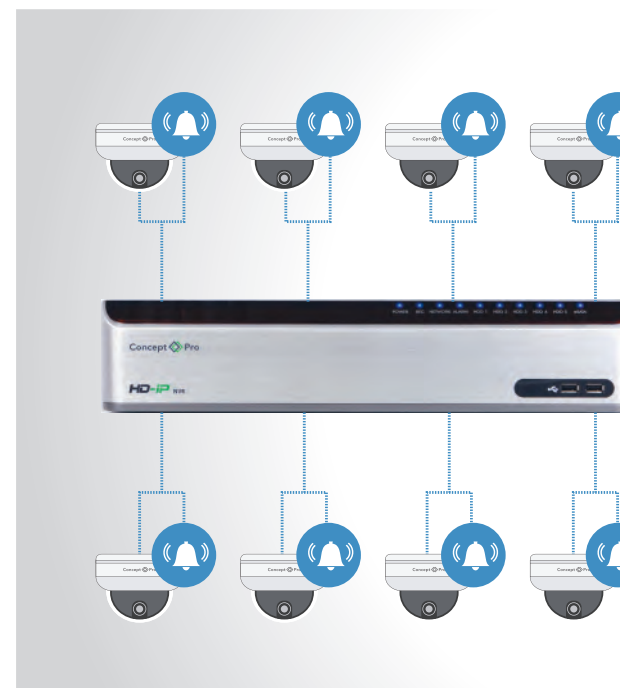
This way, installers can continue with existing roll-outs with no change or disruption to the setup process.



## Monitor Spot Out

Some of our DVRs have the ability to duplicate HDMI or VGA on both monitors and or select one to serve as a spot out meaning that users can display cameras across four monitors in separate locations, each configured to show a unique video layout.

*\*Image applies to Elite 16 Channel DVR. Monitor and display specifications differ by model. Please refer to model specifications for more information.*



## Alarms

With up to 16 alarm inputs available on both platforms, our new recorders are ideal for pre-existing systems with detectors and other compatible devices. Any pre-existing alarm connection can be reconnected to our latest recorders and with up to 16 inputs on our Professional models, there is enough potential to configure additional connections.

- **LITE DVR:** 2CH Alarm In/1Ch Alarm Out
- **PROFESSIONAL DVR:** 4-16CH Alarm In/1Ch Alarm Out (Depending on model)
- **ELITE DVR:** 8-16+2CH Alarm In/8-16CH Alarm Out/Relay(Depending on model)
- **LITE NVR:** 4CH-16CH + 2CH Alarm In/4-16CH + 1 CH Alarm Out (Depending on model)
- **PROFESSIONAL NVR:** 4CH-16CH + 4-16CH Alarm In/4-16CH + 1 CH Alarm Out (Depending on model)
- **ELITE NVR:** 4CH-16CH + 2CH Alarm In/4-16CH + 1 CH Alarm Out (Depending on model)

A Concept Pro recorder provides an opportunity for you as an installer to take advantage of one of the fastest growing areas of the security market to your customers.

Not only are you offering a CCTV system, but a cost-effective monitoring solution for your customers' entire premises.

- Immix and Sentinel Compatible
- Easy To Setup
- 9 Years of Remote Monitoring Experience
- Fastest Growing area of CCTV
- Intruder Detection with Remote Monitoring

**immix**  
by SureView  
systems

**Sentinel**



# ONE

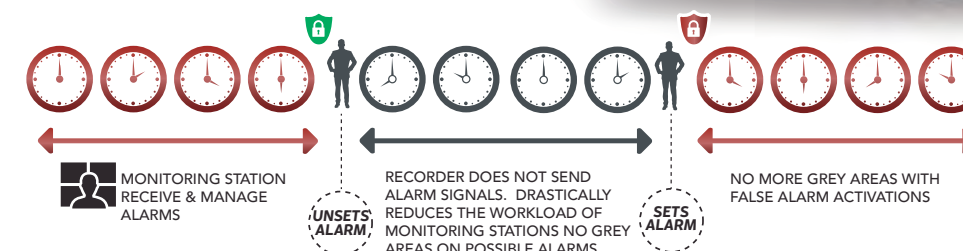
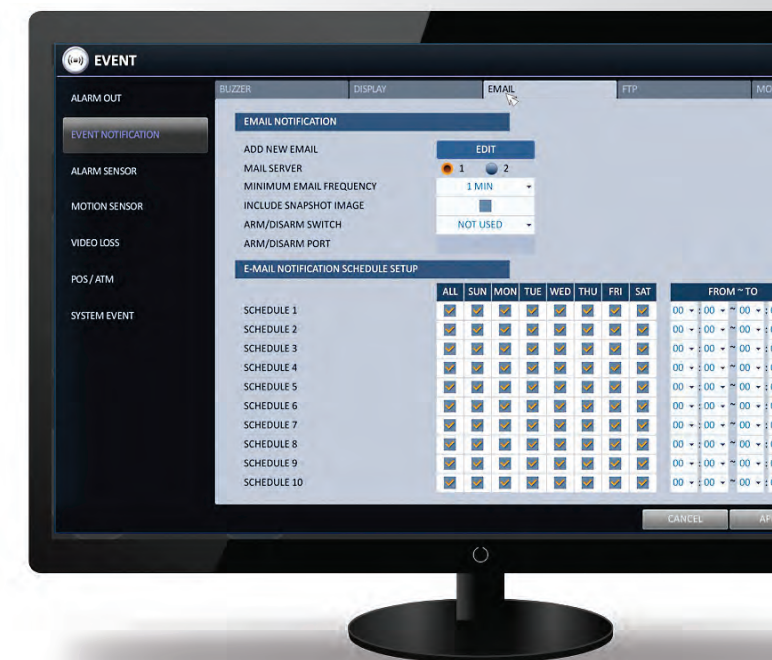
## Remote Monitoring Solution with Arm/Disarm

Remote monitoring is a simple and effective way to enhance any Concept Pro recording system, giving your customers the peace of mind of 24-hour-a-day surveillance at a fraction of the cost of manned guarding.

### Manage alarm scheduling and programming like you have never seen before.

The Arm/Disarm feature promises to dramatically improve the working efficiency of monitoring stations whilst drastically reducing the workload of CCTV Monitoring staff.

Arm/Disarm allows for a more methodical monitoring approach through a few simple measures. Through the addition of alarm connectors to the recorder that are configurable through key-switches, a system can be Armed or Disarmed at times set by a user which will free up server space and diminish the number of false alarms coming through. Users are now able to simply disarm their system at busier times when false alarms are most likely to come through.







Notifications Triggered

Alarm Triggers Full Screen

2-Way Audio

Snapshot Live Images

## iPims E-Mapping - Drag & Drop - Alarms and cameras

Make navigating large scale installations simple with E-Map View from iPims. Overlay cameras & alarm positions over a selected site map and retrieve images by simply clicking the relevant icon.

Simply import the site map and drag & drop camera & alarm locations.

### Camera Pop up on E-Map when Motion/Alarm triggers.

E-Maps allows users to overlay cameras & alarm positions over a selected site map and retrieve images by simply clicking the relevant icon, making it easy to navigate through a large-scale system.

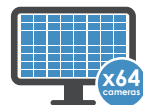
### Alarm Handling including Motion Detect Screen Pop Up

Deliver real-time audio notifications and automatically display footage onscreen from cameras installed in an area where motion has been detected.



### Up to 256 recording devices & 4096 cameras in one

iPims can connect multiple Concept Pro recorders to a single viewing platform, allowing users to view live and pre-recorded footage, back-up footage to disk and program event triggers between recorders, plus much more.



### Intuitive Display Setup - up to 64 cameras per screen

iPims makes it easy to create highly customisable CCTV screens with a simple drag and drop configuration, allowing users to combine cameras from different CCTV systems into simple, easy-to-follow layouts.



### A proactive site management tool

iPims makes it easy to create highly customisable CCTV screens with a simple drag and drop configuration, allowing users to combine cameras from different CCTV systems into simple, easy-to-follow layouts.



### PTZ Control

Users can move PTZs through the on-screen controls or with a compatible USB joystick.



### Multi Search Event

Search by alarm, event, motion.



### User defined permission

Rights-managed user accounts can be set up on iPims to customise how the system works for each person once they are logged in.



### Remote HDD Status Indicator

Hard drive health information on any connected Concept Pro professional CCTV system is sent back to iPims to help installers proactively identify problem-systems in the event of HDD failures.



### Multiple floating screens

iPims' flexible drag and drop interface allow users to arrange camera layouts as they wish and can keep CCTV footage onscreen, even when using other PC applications, allowing an upscale to multi monitor video wall setup.



### Multi Monitor Support

Multiple camera views can be sent to different monitors connected to a single PC.

\*Dependant on PC Specification



### Remote Playback & Backup

iPims can be used to access and store video footage on any connected device, making it simple for users to review and back up video recorded on multiple CCTV systems from a single location.



## Licence Free Video Management Software

Maximum surveillance with minimum hassle



FULL CONTROL WITH CLICK OF A MOUSE



SIMPLE TO INSTALL



INSTALL ON MULTIPLE COMPUTERS



MONITOR LARGE & MULTIPLE SITES



2-WAY AUDIO



ALARM NOTIFICATIONS



BACKED BY UK TECH SUPPORT

"iPims, like our new recorders, has been designed with the user in mind"

The licence-free iPims client software enables installers to connect multiple analogue and IP recorders, individual IP cameras and other external detection equipment together over a network or internet to a single PC. Perfect when monitoring large or multiple sites with a high number of cameras.

Compatible with all VXH DVRs and VHDIP NVRs, iPims gives users PTZ control of high speed dome cameras, two-way audio and alarm notifications.

### Want to learn more about iPims?

Our knowledgeable Field sales representatives are located throughout the UK and provide free product demonstrations and ongoing support and assistance.

- Compatible across all Concept Pro recorders
- Up to 256 recording devices & 4096 cameras in one
- Multi-user Support
- Drag & Drop Camera Views
- Camera pop-up on Emap when motions/Alarm triggers
- Alarm Handling including motion Detect Screen Pop up
- Image Carousels
- Accessory Support
- Multi-monitor Support
- Multi Event Search
- User Defined Permissions
- Remote HDD Status indicator
- Full Remote Device Setup



## Secure Platform

Welcome to Sequirinet - Leading the way in Cyber Security



### Enhanced Password Control

Installers have the option of Sequirinet on their recorder systems and Enhanced Password Control (EPC). This will prohibit the use of '1234' and other easily infiltrated passwords and only allow the use of passwords upon selection. In addition, all Concept Pro recorders compatible with Sequirinet do not have any backdoor user capabilities and have certain sensitive features, such as P2P, DDNS, and audio, turned off by default.

Videcon understand that certain installations will not require such a high level of security; therefore, EPC is purely optional. Compatibility to organisations requiring a stringent level of password protection is essential and it is this compatibility that undoubtedly makes the Concept Pro recording devices the most secure in the market suitable for use in government, public space and banks to name but a few.

Enhanced Password Control, easy interoperability and the potential for use in a varying array of situations ensure that Sequirinet is one of the most secure network products available on the market today.

## P2P European Servers

Since April 2016 Concept Pro Network Video and the Analogue High Definition recorders have been using Secure European Based Servers to ensure that all your customer data is protected. Concerns that third parties could gain access to the connection details of any machine and view images remotely was raised by a number of our customers working with government bodies, private business and individuals. We took these comments on board and view this measure as an absolute necessity and one that allows our customers to have the peace of mind that their installations were secure.

P2P networking makes it simple for installers to configure mobile viewing of the Concept Pro Recorders on smartphones and tablets. Installers simply activate mobile viewing by scanning the QR code on the unit into the Concept Pro app (available for Android and iOS devices free of charge) connecting through the server straight to the NVR.

Benefits of using Secure European Servers & P2P include:

- Peace of mind - All data is secure
- Quick & easy set-up
- Simple one touch access
- Standard feature on the AHD & HD-IP Concept Pro Recording Range



**Ian Farr,  
Technical Director:**  
"The industry has known for some time about the vulnerability of customers data when using P2P networks and it seemed only natural for my team to find a solution that ensured confidentiality. This was the first component of our Sequirinet programme which will deliver a complete security solution for all of our users."





## Concept Pro Mobile Application

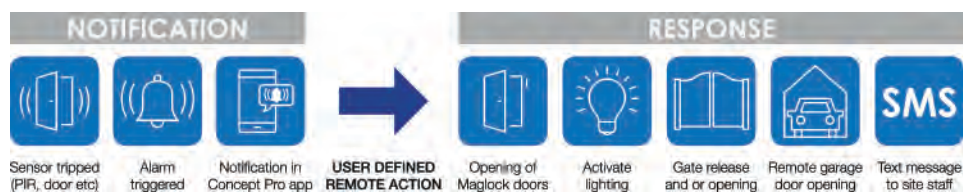
Secure European Servers & P2P



### Remotely control doors, lights, gates, PA systems, SMS Notifications and more via the in app Alarm Notifications

With the latest update to our Concept Pro Viewer, we have developed new alarm response functions, allowing you to remotely override the systems you decide you need to control.

A new software update gives users the added ability to trigger DVR/NVR alarm outputs remotely from their mobile, meaning a user can identify an intruder remotely on their viewing app and have complete jurisdiction over their response to this. The versatility of alarm outputs is without a doubt the biggest asset of this new feature; alarm outputs can be connected to a plethora of applications in a system including doors, gate and PA Systems, which can now all be triggered remotely and individually allowing you to choose your response to a situation.



### Live Monitoring & Playback

Users can monitor and interrogate both live and pre-existing footage directly from our app.



### Alarm Output Trigger

Alarm Output Trigger allows users to trigger alarm responses such as audio into a site or door closing remotely, ensuring sites can be kept secure at all times



### PTZ Control

All High Speed Dome cameras that are compatible with our recorders are controllable directly through our mobile application



### Two-Way Audio

This feature ensures users can listen into a site and also direct audio based orders into a site to dissuade intruders or provide instruction to people on a site.



### Push Notifications

Push Notifications are directly configurable from our app, ensuring that users are alerted instantly when issues arise.



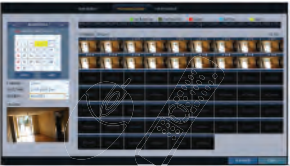
Available from the App Store and on Google Play



### Customisable Interface

The apps display interface can be customised to best suit a location, for example sites with multiple cameras can setup a multi-feed display and sites with singular cameras are able to view single feeds.

# Other features as standard on Concept Pro Recorders



Thumbnail Search

Search 24 hours in 3 hours allowing for quick identification of when an event has occurred



Instant Playback

Select and view recently recorded footage at the push of a button allowing for rapid response to an incident



Remote Connection

Connect to your Concept Pro recording systems on any computer via the web browser.



Email Snapshot

Concept Pro recorders can detect a signal loss, a triggered alarm or identifies any other technical change and instantly alert the user via email. For end users, this means they can be notified of any activity on their premises wherever they are.



Dual Streaming

Recording the best video quality uses more data, which is a problem for network speeds when trying to access the recorders remotely. Dual streaming technology allows faster transmission to smartphones, tablets and remote monitoring stations whilst still recording at the native full-size resolution on the recording unit; taking the strain off the network bandwidth when trying to access a Concept Pro recorder remotely.



Archiving

Video footage can be archived by

- USB stick
- External HDD
- Remote network storage
- Local PC through remote connection

The archive footage is watermarked and packaged with the video codec needed to play the file\*. The archive action is recorded in the digital recorder event log.

*\*Note: The video codec is not packaged when archiving via remote connection*



High Performance Recording

DVR models can record high resolution, 5-megapixel analogue channels at frame rates up to 20FPS and NVR models support real-time recording at 8MP 4K UHD. Specifications may vary depending on model.



Seamless Integration with Concept Pro Products

The Concept Pro recording range is compatible with full suite of cameras across both AHD & IP. A complete range for all applications including fixed domes, turrets, eyeball, bullet, high speed domes and much more!



How to program

- Concept Pro VA-KBDPRO+
- USB mouse
- Remote connection
- USB stick upload
- IR Remote Control



Reserve Data Management

Recorded events can be 'reserved' to a data management screen. This function allows the user to build up a list of events for easy and convenient archiving.

The data management screen logs the number of 'burns' for each event.



Instant Archive

The instant archive function allows a user to easily archive during playback.

By removing the need to access the menu structure archiving is made simpler and quicker.



User Profiles

Up to 8 user profiles can be stored on the Concept Pro at 3 levels - administrator, manager and user. The administrators can allow or restrict operation for an individual user from the following functions:

- Access to setup
- Search facility
- Archive menu
- Remote connection access



Digital Video Recorder System Health Check

The recorders monitor both the internal hard drives and digital recorder software. If any abnormalities are detected a user can be notified by email or alarm output.



Activity log preview

The Concept Pro recording range stores all recorded events in a central activity log. The central log is an itemised, chronological list of events which allows the user to quickly view each recorded event in a preview window.



Easy to understand UK manual

The Concept Pro Recorder user manuals have been written in the UK by our technical team.

It has been written with the installer in mind, taking the reader through the machine using step-by-step instructions.



Free Full UK Technical Support

Every Concept Pro recorder is supported by a helpline staffed by our technical team. +44(0)1924 528004.

Our new Recording Range is feature-rich and versatile, alongside all features mentioned previously, the below are all available as standard on our recorders



Physical Dimensions & Order Codes

LITE ORDER CODES



AHD 4 CHANNEL

VXH5AHDL-4/1000	c/w 1Tb HDD
VXH5AHDL-4/2000	c/w 2Tb HDD
VXH5AHDL-4/3000	c/w 3Tb HDD
VXH5AHDL-4/4000	c/w 4Tb HDD
VXH5AHDL-4/6000	c/w 6Tb HDD
VXH5AHDL-4/8000	c/w 8Tb HDD
VXH5AHDL-4/10000	c/w 10Tb HDD



HD-IP 4 CHANNEL

VUHDIP-4/1000	c/w 1Tb HDD
VUHDIP-4/2000	c/w 2Tb HDD
VUHDIP-4/3000	c/w 3Tb HDD
VUHDIP-4/4000	c/w 4Tb HDD
VUHDIP-4/6000	c/w 6Tb HDD
VUHDIP-4/8000	c/w 8Tb HDD



AHD 8 CHANNEL

VXH5AHDL-8/1000	c/w 1Tb HDD
VXH5AHDL-8/2000	c/w 2Tb HDD
VXH5AHDL-8/3000	c/w 3Tb HDD
VXH5AHDL-8/4000	c/w 4Tb HDD
VXH5AHDL-8/6000	c/w 6Tb HDD
VXH5AHDL-8/8000	c/w 8Tb HDD
VXH5AHDL-8/12000	c/w 12Tb HDD
VXH5AHDL-8/16000	c/w 16Tb HDD
VXH5AHDL-8/20000	c/w 20Tb HDD



HD-IP 8 CHANNEL

VUHDIP-8/1000	c/w 1Tb HDD
VUHDIP-8/2000	c/w 2Tb HDD
VUHDIP-8/3000	c/w 3Tb HDD
VUHDIP-8/4000	c/w 4Tb HDD
VUHDIP-8/6000	c/w 6Tb HDD
VUHDIP-8/8000	c/w 8Tb HDD
VUHDIP-8/12000	c/w 12Tb HDD
VUHDIP-8/16000	c/w 16Tb HDD



AHD 16 CHANNEL

VXH5AHDL-16/1000	c/w 1Tb HDD
VXH5AHDL-16/2000	c/w 2Tb HDD
VXH5AHDL-16/3000	c/w 3Tb HDD
VXH5AHDL-16/4000	c/w 4Tb HDD
VXH5AHDL-16/6000	c/w 6Tb HDD
VXH5AHDL-16/8000	c/w 8Tb HDD
VXH5AHDL-16/12000	c/w 12Tb HDD
VXH5AHDL-16/16000	c/w 16Tb HDD
VXH5AHDL-16/20000	c/w 20Tb HDD



HD-IP 16 CHANNEL

VUHDIP-16/1000	c/w 1Tb HDD
VUHDIP-16/2000	c/w 2Tb HDD
VUHDIP-16/3000	c/w 3Tb HDD
VUHDIP-16/4000	c/w 4Tb HDD
VUHDIP-16/6000	c/w 6Tb HDD
VUHDIP-16/8000	c/w 8Tb HDD
VUHDIP-16/12000	c/w 12Tb HDD
VUHDIP-16/16000	c/w 16Tb HDD

PROFESSIONAL ORDER CODES



AHD 4 CHANNEL

VXH5AHD-4/1000	c/w 1Tb HDD
VXH5AHD-4/2000	c/w 2Tb HDD
VXH5AHD-4/3000	c/w 3Tb HDD
VXH5AHD-4/4000	c/w 4Tb HDD
VXH5AHD-4/6000	c/w 6Tb HDD
VXH5AHD-4/8000	c/w 8Tb HDD
VXH5AHD-4/10000	c/w 10Tb HDD



HD-IP 4 CHANNEL

VUHDIP-4/1000	c/w 1Tb HDD
VUHDIP-4/2000	c/w 2Tb HDD
VUHDIP-4/3000	c/w 3Tb HDD
VUHDIP-4/4000	c/w 4Tb HDD
VUHDIP-4/6000	c/w 6Tb HDD
VUHDIP-4/8000	c/w 8Tb HDD
VUHDIP-4/10000	c/w 10Tb HDD



AHD 8 CHANNEL

VXH5AHD-8/1000	c/w 1Tb HDD
VXH5AHD-8/2000	c/w 2Tb HDD
VXH5AHD-8/3000	c/w 3Tb HDD
VXH5AHD-8/4000	c/w 4Tb HDD
VXH5AHD-8/6000	c/w 6Tb HDD
VXH5AHD-8/8000	c/w 8Tb HDD
VXH5AHD-8/12000	c/w 10Tb HDD
VXH5AHD-8/16000	c/w 16Tb HDD
VXH5AHD-8/20000	c/w 20Tb HDD



HD-IP 8 CHANNEL

VUHDIP-8/1000	c/w 1Tb HDD
VUHDIP-8/2000	c/w 2Tb HDD
VUHDIP-8/3000	c/w 3Tb HDD
VUHDIP-8/4000	c/w 4Tb HDD
VUHDIP-8/6000	c/w 6Tb HDD
VUHDIP-8/8000	c/w 8Tb HDD
VUHDIP-8/10000	c/w 10Tb HDD
VUHDIP-8/12000	c/w 12Tb HDD
VUHDIP-8/16000	c/w 16Tb HDD
VUHDIP-8/20000	c/w 20Tb HDD



AHD 16 CHANNEL

VXH5AHD-16/1000	c/w 1Tb HDD
VXH5AHD-16/2000	c/w 2Tb HDD
VXH5AHD-16/3000	c/w 3Tb HDD
VXH5AHD-16/4000	c/w 4Tb HDD
VXH5AHD-16/6000	c/w 6Tb HDD
VXH5AHD-16/8000	c/w 8Tb HDD
VXH5AHD-16/12000	c/w 12Tb HDD
VXH5AHD-16/16000	c/w 16Tb HDD
VXH5AHD-16/20000	c/w 20Tb HDD



HD-IP 16 CHANNEL

VUHDIP-16/1000	c/w 1Tb HDD
VUHDIP-16/2000	c/w 2Tb HDD
VUHDIP-16/3000	c/w 3Tb HDD
VUHDIP-16/4000	c/w 4Tb HDD
VUHDIP-16/6000	c/w 6Tb HDD
VUHDIP-16/8000	c/w 8Tb HDD
VUHDIP-16/10000	c/w 10Tb HDD
VUHDIP-16/12000	c/w 12Tb HDD
VUHDIP-16/16000	c/w 16Tb HDD
VUHDIP-16/20000	c/w 20Tb HDD

ELITE ORDER CODES



AHD 8 CHANNEL

VXH5AHDE-8/1000	c/w 1Tb HDD
VXH5AHDE-8/3000	c/w 3Tb HDD
VXH5AHDE-8/4000	c/w 4Tb HDD
VXH5AHDE-8/6000	c/w 6Tb HDD
VXH5AHDE-8/9000	c/w 9Tb HDD
VXH5AHDE-8/12000	c/w 12Tb HDD
VXH5AHDE-8/15000	c/w 15Tb HDD
VXH5AHDE-8/20000	c/w 20Tb HDD
VXH5AHDE-8/30000	c/w 30Tb HDD
VXH5AHDE-8/40000	c/w 40Tb HDD



HD-IP 8 CHANNEL

VUHDIP-8/3000	c/w 3Tb HDD
VUHDIP-8/6000	c/w 6Tb HDD
VUHDIP-8/9000	c/w 9Tb HDD
VUHDIP-8/12000	c/w 12Tb HDD
VUHDIP-8/15000	c/w 15Tb HDD
VUHDIP-8/20000	c/w 20Tb HDD
VUHDIP-8/24000	c/w 24Tb HDD
VUHDIP-8/30000	c/w 30Tb HDD



AHD 16 CHANNEL

VXH5AHDE-16/1000	c/w 1Tb HDD
VXH5AHDE-16/3000	c/w 2Tb HDD
VXH5AHDE-16/4000	c/w 4Tb HDD
VXH5AHDE-16/6000	c/w 6Tb HDD
VXH5AHDE-16/8000	c/w 8Tb HDD
VXH5AHDE-16/9000	c/w 9Tb HDD
VXH5AHDE-16/12000	c/w 12Tb HDD
VXH5AHDE-16/15000	c/w 15Tb HDD
VXH5AHDE-16/18000	c/w 18Tb HDD
VXH5AHDE-16/24000	c/w 24Tb HDD
VXH5AHDE-16/30000	c/w 30Tb HDD
VXH5AHDE-16/40000	c/w 40Tb HDD



HD-IP 16 CHANNEL

VUHDIP-16/3000	c/w 3Tb HDD
VUHDIP-16/6000	c/w 6Tb HDD
VUHDIP-16/9000	c/w 9Tb HDD
VUHDIP-16/12000	c/w 12Tb HDD
VUHDIP-16/15000	c/w 15Tb HDD
VUHDIP-16/20000	c/w 20Tb HDD
VUHDIP-16/24000	c/w 24Tb HDD
VUHDIP-16/30000	c/w 30Tb HDD
VUHDIP-16/40000	c/w 40Tb HDD

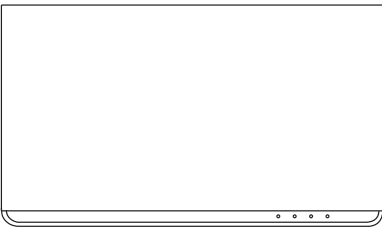
8 CHANNEL POE EXTENDER INCLUDED ALL 16 CHANNEL HD-IP RECORDERS



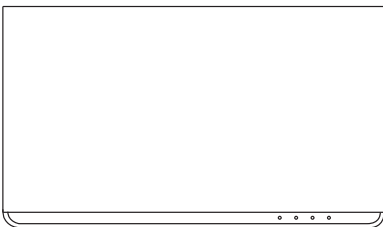
Extended cable distance with supplied 8 Channel Hub

The VUHDIP-16 channel splits its channel inputs between the back of the recorder and a separate PoE unit, allowing installers the convenience of being able to power eight of the sixteen cameras up to 200 metres away from the recorder using only one additional power source, whilst connecting the nearest cameras directly to the NVR.  
(Dimensions: 340(W) x 141(D) x 35(H) mm)

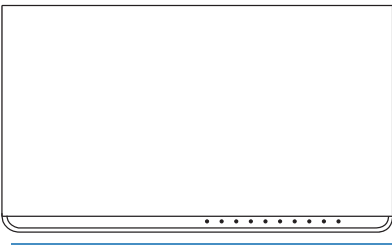
LITE & PROFESSIONAL  
4 CHANNEL DIMENSIONS



LITE & PROFESSIONAL  
8 & 16 CHANNEL DIMENSIONS



ELITE  
8 & 16 CHANNEL DIMENSIONS



DID YOU KNOW THAT EVERY HARD DRIVE IN OUR RECORDERS IS RIGOROUSLY TESTED FOR 24 HOURS.

VXH5AHD Range

COMPARISON CHART



Level	LITE			PROFESSIONAL			ELITE	
Model	VXH5AHDL-4	VXH5AHDL-8	VXH5AHDL-16	VXH5AHD-4	VXH5AHD-8	VXH5AHD-16	VXH5AHDE-8	VXH5AHDE-16
Channel	4	8	16	4	8	16	8	16
iPIMS Compatibility	●	●	●	●	●	●	●	●
Sequirinet P2P Connectivity	●	●	●	●	●	●	●	●
Concept Pro Viewer Mobile App Compatibility	●	●	●	●	●	●	●	●
Remote Monitoring	●	●	●	●	●	●	●	●
Concept Pro Intuitive User Interface	●	●	●	●	●	●	●	●
Free DVRLINK Dynamic DNS Service	●	●	●	●	●	●	●	●
E-mail/Dual SMTP	●	●	●	●	●	●	●	●
Two Way Audio	●	●	●	●	●	●	●	●
Coaxitron Support	●	●	●	●	●	●	●	●
RS-485 Keyboard Support	●	●	●	●	●	●	●	●
RS-232 Point of Sale Support							●	●
e-SATA External Storage Support							●	●
RAID 1/5 Support							●	●
Rack Mount Capability		●	●		●	●	●	●
Fanless Design	●			●				
Dual Monitor Support				●	●	●	●	●
1080p Display Resolution Support	●	●	●	●	●	●	●	●
1440p QHD Display Resolution Support				●	●	●	●	●
2160p UHD Display Resolution Support				●	●	●		
Camera Loop Through							●	●
5MP AHD/TVI Camera Support	●	●	●	●	●	●	●	●
2MP IP Camera Hybrid Support	●	●	●	●	●	●	●	●
5MP IP Camera Hybrid Support				●	●	●	●	●
IPv4/IPv6 Support	●	●	●	●	●	●	●	●
Maximum HDD Capacity	10TB	20TB	20TB	10TB	20TB	20TB	50TB	50TB
Spot Out	x1	x1	x1	x1	x1	x1	x1	x2
Number of Alarms	x2/x1	x2/x1	x2/x1	x4/x1	x8/x1	x16/x1	x8+2/x4+x4	x16+2/x8+x8
Warranty	3 YEAR	3 YEAR	3 YEAR	3 YEAR	3 YEAR	3 YEAR	3 YEAR	3 YEAR

VUHDIP Range

COMPARISON CHART



Level	LITE			PROFESSIONAL			ELITE	
Model	VUHDIPL-4	VUHDIPL-8	VUHDIPL-16	VUHDIP-4	VUHDIP-8	VUHDIP-16	VUHDIP-8	VUHDIP-16
Channels	4	8	16	4	8	16	8	16
iPIMS Compatibility	●	●	●	●	●	●	●	●
Sequirinet P2P Connectivity	●	●	●	●	●	●	●	●
Concept Pro Viewer Mobile App Compatibility	●	●	●	●	●	●	●	●
Remote Monitoring	●	●	●	●	●	●	●	●
Concept Pro Intuitive User Interface	●	●	●	●	●	●	●	●
Free DVRLINK Dynamic DNS Service	●	●	●	●	●	●	●	●
E-mail/Dual SMTP	●	●	●	●	●	●	●	●
Two Way Audio				●	●	●	●	●
Alarm Arm/Disarm Switch Support	●	●	●	●	●	●	●	●
RS-485 Keyboard Support	●	●	●	●	●	●	●	●
RS-232 Point of Sale Support							●	●
e-SATA External Storage Support							●	●
RAID 1/5 Support							●	●
Rack Mount Capability		●	●		●	●	●	●
Fanless Design	●			●				
2160p UHD Display Resolution Support	●	●	●	●	●	●	●	●
Real-time Recording at 8MP (4K UHD)	●	●	●	●	●	●	●	●
Power over Ethernet	x4	x8	x8 + x8	x4	x8	x8 + x8	x8	x8 + x8
H.265 Video Codec Support	●	●	●	●	●	●	●	●
Smart Storage Compression Support	●	●	●	●	●	●	●	●
IPv4/IPv6 Support	●	●	●	●	●	●		
Maximum HDD Capacity	10TB	20TB	20TB	10TB	20TB	20TB	50TB	50TB
Spot Out			x1			x1		
Number of Alarms	x2/x1 + x4/x4	x2/x1 + x8/x8	x2/x1 + x16/x16	x4/x1 + x4/x4	x8/x1 + x8/x8	x16/x1 + x16/x16	x2/x1 + x8/x8	x2/x1 + x16/x16
Warranty	3 YEAR	3 YEAR	3 YEAR	3 YEAR	3 YEAR	3 YEAR	3 YEAR	3 YEAR





## See the Concept Pro Range in action. Book a demonstration today.

We can come to you anytime, anywhere, ensuring the process for you is as smooth and as stress free as possible. Our experienced group of nine Field Sales Executives give Videcon a full nationwide coverage to deliver the best service to you. Our field sales team have an extensive knowledge of our entire product range and they will be happy to provide a full demonstration to both you and your customers, at a time and place convenient to you, at no extra cost.

### DEMONSTRATION FACILITY HEAD OFFICE

Alternatively, we extend an open invitation to join us at our dedicated demonstration facility based in our 82,000 sq. ft. headquarters in West Yorkshire.

Fitted with our entire range of Concept Pro products, the demonstration facility is the perfect place to see all our product solutions conveniently under one roof.

### LET US COME TO YOU ANYTIME, ANYWHERE

Take the opportunity to evaluate the Concept Pro range in action with a demonstration at a time and place to suit you. Wherever you are within the **UK & Ireland** our dedicated Field Sales Team are available to give you the support and service you need.

Not only will we demonstrate our full product range to you, we can also assist with any design or technical requirements and end-user demonstrations

**Simply call or email to arrange a demonstration wherever  
and whenever is convenient to you and we'll do the rest.**



Videcon LTD, Unit 1 Concept Business Park Smithies Lane Heckmondwike West Yorkshire WF16 0PN

Sales: +44 1924 528000 Accounts: +44 1924 528006 Technical: +44 1924 528004

Fax: +44 1924 528005 Email: [sales@videcon.co.uk](mailto:sales@videcon.co.uk)

**[www.videcon.co.uk](http://www.videcon.co.uk)**