

Concept Pro Thermal Cameras



Pepco
Professional Electric
Products Company

**2019
OCTOBER
EDITION**

**Featured
Products**

Sponsored By:

 **Videcon**

**Contact your Pepco
Sales Rep for more
information about
Videcon products.**

*"From Substation to Workstation...
We're Distribution Unleashed!"*

www.pepconet.com

1.800.872.7000



Concept Pro Thermal Range is great for long range video surveillance and monitoring multiple areas for temperature detection. It supports 17 display modes to highlight temperature detection and 17 display modes to highlight temperature within the scene. Make use of the area temperature detection function where 20 individual areas can be set to detect and alarm based on exceeding a temperature or temperature differences. Making use of thermal detection at night or dark locations provides an alternative to hard to monitor areas where lightning is limited

with thermal sensitivity of 40mK.

The Thermal Imaging Range of Cameras also supports 2 alarm inputs and outputs, audio and temperature display.

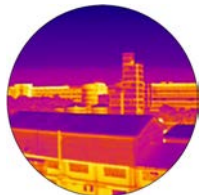
The VCP-4208-IP is an IP infrared thermal imaging camera with a 220m Person, 235m Fire, 540m Vehicle Detection Ranges.

Features

- Up to 16 Temperature Detection Areas
- Up to 17 Color Modes
- Up to 1410m Human Detection, 1470m Fire Detection and 3380m Vehicle Detection With Concept Pro's Thermal Cameras, the capabilities are almost endless.



The Concept Pro HD-IP camera range conforms to the ONVIF Core Specification that aims to standardize the network interface between all IP Security Products.



Without any available light source, the Thermal Imaging Camera will detect infrared radiation in any weather condition to produce high definition crisp images.



Offering two alarm inputs and two outputs allows the Thermal Camera to be integrated with Intruder Alarm Systems.