



HUBBELL NEXTSPEED[®] Ascent Category 6A Reduced Diameter Cable

Reduced 0.265 Jacket O.D.

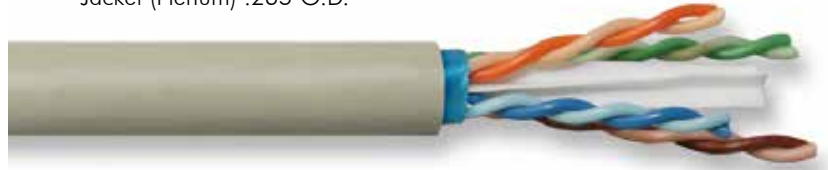
Third Party Verified Category 6A Component Compliant

+7dB Alien Crosstalk Headroom Above Standards

High Power PoE (4PPoE) Ready

Reduced Diameter Jacket (Plenum) .265 O.D.

Tested to 100W



Easy to pull, standard, round jacketed cable

Tested to 650MHz

SPECIFICATIONS

- ◆ **Conductor:** 23 AWG solid bare copper
- ◆ **Insulation:** CMP: FEP, CMR: thermoplastic
- ◆ **Pairing**
 - 1: White/Blue
 - 2: White/Orange
 - 3: White/Green
 - 4: White/Brown
- ◆ **Jacket**
 - CMP and CMP-LP: 0.6A, FR, low-smoke PVC
 - CMR and CMR-LP: 0.5A, FR PVC
- ◆ **NVP**
 - CMP: 71
 - CMR: 66

Hubbell's NEXTSPEED[®] Ascent Category 6A RD Cables provide a significantly smaller jacket—0.265 O.D. (plenum) or 0.275 O.D. (riser)—allowing contractors to install significantly more drops per location than traditional Category 6A cables. These new cables offer a high-performing, Category 6A component compliant (ANSI/TIA-568-C.2), LP rated solution. NEXTSPEED Ascent RD/LP cables are ideal for new high power IEEE 802.3bt (4PPoE) applications, such as HDBaseT Class A and B, IEEE 802.11ac high bandwidth/high power wireless access point applications, and 10GBASE-T Ethernet 100m solutions.

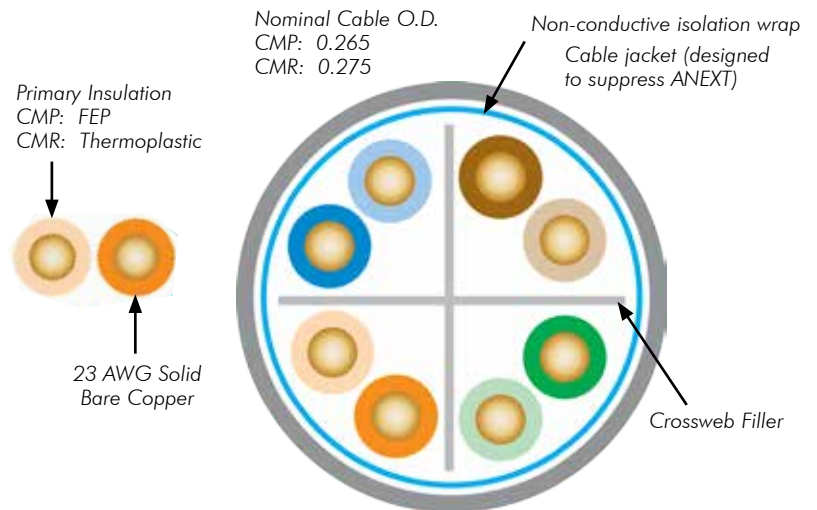
STANDARDS/VERIFICATIONS

- ANSI/TIA-568-C.2 and ISO/IEC 11801 component compliance
- IEEE 802.3af (PoE), IEEE 802.3at (PoE+), IEEE 802.3bt (4PPoE Type 3 and 4)
- 10BASE-T through 10GBASE-T Ethernet
- NEC Article 800 compliant
- Third party verified
- UL/c(UL) Listed, LP Listed for product safety in high heat/high power PoE applications
- HDBASE-T Certified
- RoHS/RoHS 2 compliant
- REACH compliant

APPLICATIONS

- ▲ High-performance/high-power PoE applications
- ▲ Data centers 10GbE between devices
- ▲ AV applications up to 100m

CABLE FEATURES



TEMPERATURE INCREASE AND POWER EFFICIENCY for a Bundle of 100 Cables with 100W Injected

	Temperature Rise in a 100-Cable Bundle	Power Efficiency on 100m at Max Temp
NEXTSPEED [®] Ascent Cat 6A RD Cable	8.2°C	82.8% at 53.2°C

ORDERING INFORMATION



NEXTSPEED® Ascent Category 6A Reduced Diameter (RD) Cable

Color	Catalog No. Riser Spool (1000ft)	Catalog No. Plenum Spool (1000ft)
Blue	C6ASRDSB	C6ASPDSB
Gray	C6ASRDSGY	C6ASPDSGY
Orange	C6ASRDSOR	C6ASPDSOR
Red	C6ASRDSRD	C6ASPDSRD
White	C6ASRDSW	C6ASPDSW
Yellow	C6ASRDSY	C6ASPDSY

RELATED PRODUCTS

NEXTSPEED® Ascent Category 6A Jacks

Color	Catalog No.	Color	Catalog No.
Black	HJ6ABK	Office White	HJ6AOW
Blue	HJ6AB	Orange	HJ6AOR
Electric Ivory	HJ6AEI	Red	HJ6AR
Gray	HJ6AGY	White	HJ6AW
Green	HJ6AGN	Yellow	HJ6AY

Note: Add **25** to Catalog Number for 25-pack.
Gold and Purple also available in 25-pack only.

NEXTSPEED® Ascent Category 6A Component Patch Panels, 19"

Format	Color	24-Port, 1RU	48-Port, 2RU	96-Port, 4RU
Standard	Black	HP6A24	HP6A48	HP6A96
Standard	White	HP6A24W	HP6A48W	-
Angled	Black	HP6A24A*	HP6A48A*	-

*Angled panels protrude 4.46" from the plane of the rack. One extra inch of space is recommended between the door and panel angle.

Jack Patch Panels, Unloaded, 19"

Format	24-Port, 1RU	48-Port, 2RU	72-Port, 3RU	High-Density, 48-Port, 1RU
Standard	HPJ24	HPJ48	HPJ72	UDX48E1U
Angled	HPJ24A	HPJ48A	-	UDX48A1U

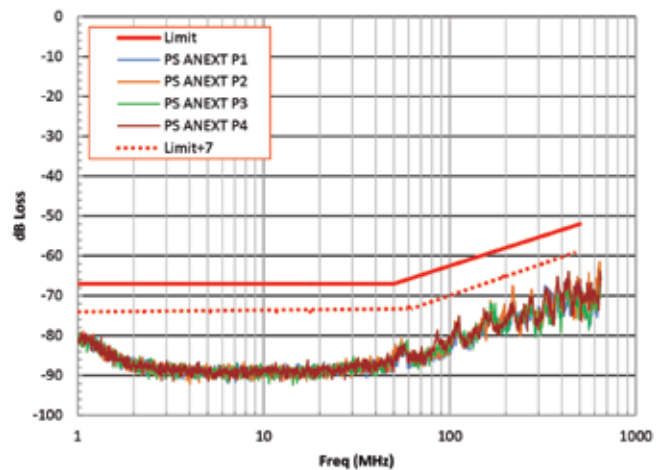
Category 6A Patch Cords

Length	Plenum Catalog No.	Standard Catalog No.	28AWG Low Diameter Catalog No.
1'	HC6App01P	HC6Axx01	HCL6Add01
3'	HC6App03P	HC6Axx03	HCL6Add03
5'	HC6App05P	HC6Axx05	HCL6Add05
7'	HC6App07P	HC6Axx07	HCL6Add07
10'	HC6App10P	HC6Axx10	HCL6Add10
15'	HC6App15P	HC6Axx15	HCL6Add15
20'	-	HC6Axx20	HCL6Add20
25'	-	-	HCL6Add25
30'	-	-	HCL6Add30

pp = Plenum Colors: **BK** (Black), **B** (Blue), **GY** (Gray), **GN** (Green), **P** (Purple), **W** (White) or **Y** (Yellow)
xx = Standard Colors: **BK** (Black), **B** (Blue), **GY** (Gray), **GN** (Green), **OR** (Orange), **P** (Purple), **R** (Red), **W** (White) or **Y** (Yellow)
dd = Low Diameter Colors: **BK** (Black), **B** (Blue), **GY** (Gray), **W** (White)

TYPICAL TRANSMISSION PERFORMANCE AT 100m

PS ANEXT Performance
100m "6 around 1" setup



PS AACRF Performance
100m "6 around 1" setup

