

Harness the potential of schedules analysis



Identify commercial opportunities for new routes



Monitor competitor network & relative market share



Modelling traffic flow, including future demand



Resource planning, modelling passenger flows at airports

About the reports

Capacity Report

Data across different dimensions – airline, alliance, departure/arrival airports, city, country, region, DOW, departure/arrival times, equipment type – and frequency (date, week, month, season or year).

Top X Report

View **top carriers, top departure/arrival airports or top aircraft types** based on various metrics (ASKs, ASMs, Seats, Frequency).

Power Table

Create a **fully-customised report** of schedule data.

Bank Structure Report

Data at a hub airport and 24-hour flow of flights for a given time period.

Changes Report

Compare schedules for two time periods and view new routes, discontinued routes, and/or differences in capacity, equipment and scheduled departure/arrival times.

Key Features

User-friendly interface, check criteria as you work, schedule to run automatically, configure columns and ready-made visuals. All reports to .csv,.pdf,.xls and .xlsx formats.

OAGschedules

Modules

My OAG

References

Preferences

User Guide

User

Parameters

Schedules Capacity Report

Period

Types of Flights

Carrier

Route Overlap

Origin & Destination

Equipment

More

Period

From

To

Types of Flights

Selected Flight Type

Operating flights

Codeshare flights

Both

Show By

Published carrier

Operating Carrier

Stops

Non-stop

Stops

Carrier

Carrier Name

AA, BA, EK

Add Exclusion

Marketing Carrier(s)

Add Exclusion

Carrier Category

All

Alliance

Include alliance affiliates

Domicile

Country

Region

Route Overlap

Carrier With Same Route

Add Exclusion

Origin & Destination

To & From A Single Location

Origin

Airport

City

Country

Region

Add Exclusion

Direction

One Way

Destination

Airport

City

Country

Region

Add Exclusion

Domestic/International

All

O & D Pairs

My Report

Current Report Selections

Customise Report

More Report Options

Columns

Select All

Published Airline

Flight Number

Origin

Destination

Departure Time

Arrival Time

Block Time

Distance

Stops

Distance

Time Series

Marketing Carrier

Pub. AL

Flight

Org

Dest

Dep. Time

Arr. Time

Op. Days

Block Time

Distance (NM)

Stops

Equipment

Frequency

AA

1

LHR

JFK

10:10:00

13:15:00

123467

3:05:00

\$546

0

Airbus T37

0

AA

1

LHR

JFK

10:10:00

13:15:00

123467

3:05:00

\$546

0

Airbus T37

0

Example data to reflect column and data types

Graphing Options

Show data in a graph

Graph Type

Line

Columns

Pie

Bubble

Scatter

X Axis

Dimension 1

Y Axis

Dimension 1

Mapping Options

Show map

Clear All

This option will clear all report selections.

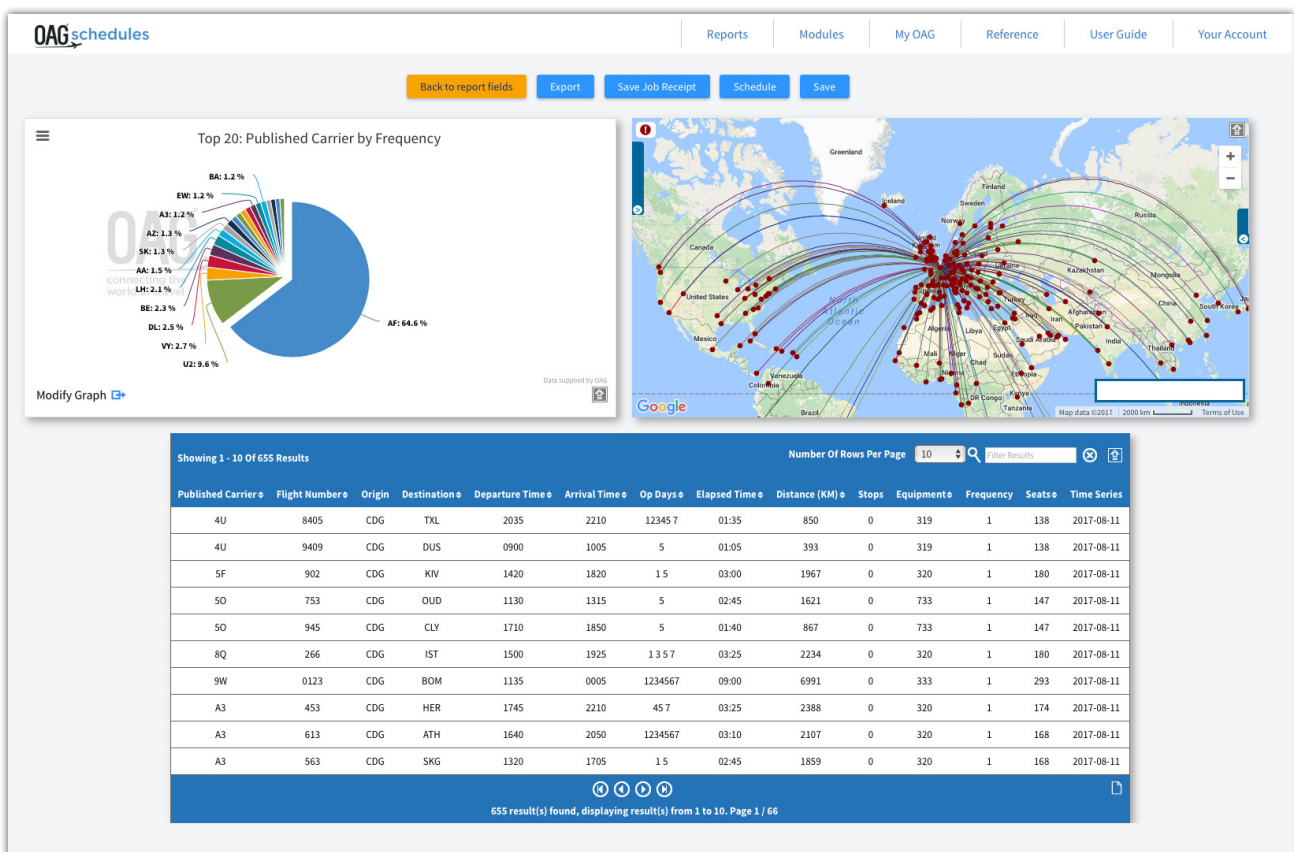
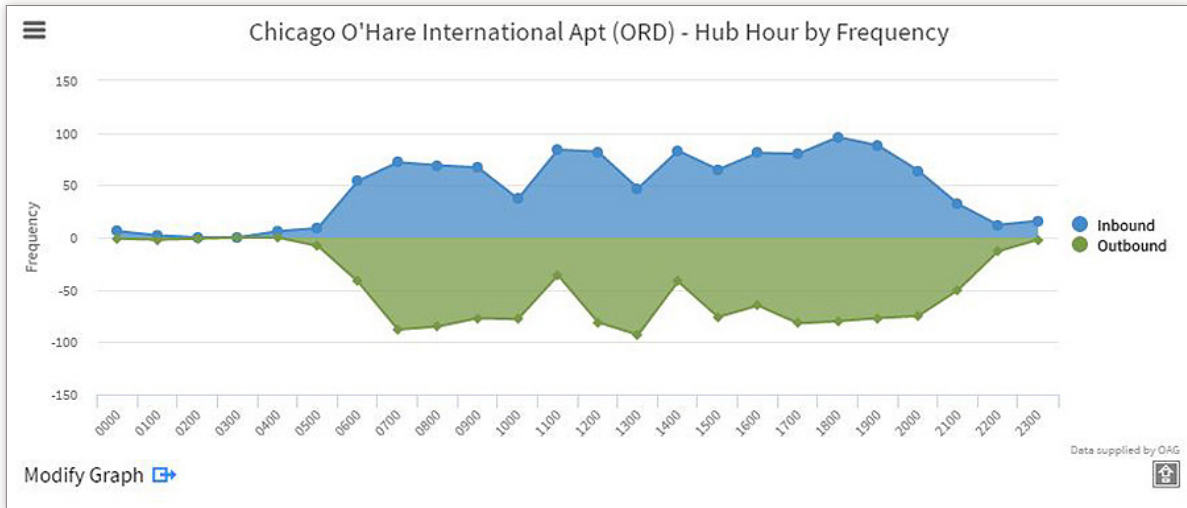
Run

Export

Save

What data is included?

- Historical schedule information from 1996
- More than 900 airlines, 4000 airports
- Reference data for airlines, airports, aircraft codes, alliances, country/regions
- MCTs and over 100,000 exception records



Clients include:

American Airlines

BRITISH AIRWAYS

TRAVEL LEADERS®

swissport

AÉROPORT
TOULOUSE-BLAGNAC
Chambre de Commerce et d'Industrie de Toulouse

ATR
PROPELLING THE NEXT CONNECTION

ANGKASA PURA II
INDONESIA'S AIRPORT COMPANY

Adelaide
Airport

AVIS®