



Duct Cleaning
Equipment for Professionals

 **ABATEMENT**
TECHNOLOGIES®
LEADERS IN CLEAN AIR

For more than 30 years companies throughout North America have relied on Abatement Technologies® for true HEPA filtered Duct Cleaning systems. Abatement Technologies® provides HEPA Filters that are individually tested and certified and pass DOP/PAO testing. Many other duct cleaning manufacturers do not adhere to these standards.



About Abatement Technologies

Abatement Technologies' high-performance air duct cleaning equipment and specialty tools physically remove dirt, debris and other contaminants from commercial and residential ductwork systems. These exceptionally portable, HEPA-filtered air duct cleaning vacuums are designed to help duct cleaning professionals clean HVAC duct systems faster and more efficiently and to help contractors develop profitable IAQ businesses.

Our knowledgeable sales team is available to help you pick the right products and assemble a custom package for your business's needs.

Contact our Duct Cleaning Specialists with all of your questions today.

Table of Contents

How To Pick Your Package	3
Portable Power Vacuums	4-7
Air Compressors	8-9
Accessories	10-13
Pick Your Package	14-15
Chemicals	16
Portable HEPA Vacuums	17
CAP® Central Air Purifiers	18-20
Replacement Parts And Accessories	21-27
Contact Us	28

US: 1-800-634-9091 • CANADA: 1-800-827-6443 • ABATEMENT.COM



How To Pick Your Package

How To Assemble Your Custom Duct Cleaning Package

To make sure you can select the right package for your needs we have developed this process to customize everything from the vacuum to the compressor, agitation devices and accessories. This gives you ultimate flexibility while still taking advantage of package savings. It's as easy as 1, 2, 3.

1

PICK YOUR VACUUM

2

PICK YOUR AIR COMPRESSOR

3

PICK YOUR ACCESSORIES



EXAMPLE PACKAGE





Portable Power Vacuums

WHAT IS A PORTABLE POWER VACUUM? (PPV)

Abatement Technologies was the first to introduce patented Portable Power Vacuums (PPVs) making it possible for contractors to perform “within the building” source removal duct cleaning in all types of structures from homes to hospitals to commercial high-rises.

These HEPA-filtered systems have the power needed to place large sections of an air duct network under negative pressure, pull dislodged contaminants out of the duct system and capture them.

True HEPA filters with 99.97%-rated efficiency or greater ensures that only “hospital grade” pure air is released back into the building. Compared to a clumsy van or truck-mounted units, Abatement PPVs offer exceptional flexibility and the portability needed to access and clean air handling systems on the first floor or the fifty-first floor. Abatement PPV's give you the opportunity to bid on jobs big and small.

All models feature:

- Stainless Steel Cabinets
- Airtight Rivet Construction
- First Stage Washable Reusable Bag Filter
- Second Stage High-Efficiency Pleated Bag Filter
- Tested & Certified HEPA Filters
- Integral Transport Cart
- Operating Hour Meter
- Front Swivel Casters
- Non-Marking Wheels & Stairclimbers
- Power On Visual Indicator

Export products:

Most of the Abatement Technologies electric-powered products in this brochure are available in 230 volt/50 Hertz and 230 volt/60 Hertz models for overseas customers. Contact our Duct Cleaning Export Sales Department for more information.



HEPA-AIRE® H2500C
PORTABLE POWER VACUUM
PART NO: H2500C



Portable Power Vacuums

What Is INTELLIVAC®?

INTELLIVAC® is a SMART electronics package; a computer that controls the variable frequency drive. It eases the load and gives the maximum amount of amps without overloading the circuit. INTELLIVAC® makes sure you are getting the right amount of current, instantaneous feedback, and correction from the computer.

The benefits are:

- Clean power going to the motor in spite of other demands on the circuit.
- Optimized circuitry to provide the greatest amount of current while balancing the load on the circuitry and the motor simultaneously.
- As filters begin to load through the cleaning process the INTELLIVAC® compensates and continues to provide power to the drive motor minimizing the need to maintain filters during cleaning jobs.
- Longer lifespan in the filters; you get the maximum amount of debris in the filters.
- 3-phase performance without needing 3-phase power; 3-phase power is not readily available in residential settings. Programming inside the INTELLIVAC® system's computer creates three separate frequencies that allow for the use of a 3-phase motor on a single phase circuit. This system provides significantly more torque, less heat and smoother operation.



H2500IV INTELLIVAC® VACUUM & H4500IV INTELLIVAC® VACUUM
PART NO: H2500IV & H4500IV



HEPA-AIRE® Portable Power Vacuums

1 PICK YOUR VACUUM



PART NO: H2200

HEPA-AIRE® H2200 Portable Power Vacuum

Recommended for residential projects

The HEPA-AIRE® H2200 Portable Power Vacuum is Abatement Technologies' most lightweight, compact and economical high-performance vacuum in a single module system. It was developed especially for start-up businesses, entrepreneurs or anyone looking to get into the duct cleaning business with minimum capital investment. The H2200 generates a large volume of airflow to remove suspended materials from the duct. This volume is obtained by using a single 120v AC, 15A motor in combination with a high output blower assembly. The unit has two 8" non-marking rear wheels, a stair-climber assembly with roller belts, and two 360° front swivel casters.

Three Standard Filtration Stages:

- First: Cleanable/reusable filter (F2221)
- Second: High-efficiency deep pleated bag filter (H2255)
- Third: True HEPA filter, certified to capture at least 99.97% of 0.3 micron particles (H1210C-99)
- Controls: Hour meter, green "power on" and amber "filter change" lamps
- Unit Weight: 114 LBS
- Airflow: 1,800 cfm, 5.0" w.g. static



PART NO: H2500C

HEPA-AIRE® H2500C Portable Power Vacuum

Recommended for residential projects

The HEPA-AIRE® H2500C offers a more basic and lower-priced alternative to the H2500IV while offering superior quality and unmatched performance compared to similarly equipped products. It is a great choice for companies on a more limited budget, or those looking for an additional vacuum to accommodate peak project demands. The H2500C generates a large volume of airflow to remove suspended materials from the duct. This volume is obtained using a single 230v, 15A electronic controller and a 1.5 HP 3-phase motor matched with a high output blower assembly. The H2500C also features a built-in transport dolly and stair climber cart (with non-marking stair belts) that allows for easy transport and with two distinct modules it can also be separated for maneuverability on tight stairwells.

Three Standard Filtration Stages:

- First: Cleanable/reusable filter (H2515B)
- Second: High-efficiency deep pleated bag filter (H8516)
- Third: True HEPA filter, certified to capture at least 99.97% of 0.3 micron particles (H2418-99)
- Controls: Hour meter, green "power on" and amber "filter change" lamps
- Unit Weight: 164 LBS
- Airflow: 2,300 cfm, 5.0" w.g. static



HEPA-AIRE® Portable Power Vacuums

1 PICK YOUR VACUUM



PART NO: H2500IV

H2500IV INTELLIVAC® Portable Power Vacuum

Recommended for residential and light commercial projects

The HEPA-AIRE® H2500IV INTELLIVAC® is the ultimate portable vacuum for residential and commercial air duct cleaning. This model includes the “SMART” electronics package with Variable Frequency Drive. A built-in transport dolly and stair climber cart (with non-marking stair belts) allow for easy transport. Site set-up is as easy as moving the unit to the duct system, attaching the H2500IV inlet to the section of the building duct to be cleaned, and plugging the H2500IV into a 120v, 60 Hz, 15A or 20A circuit. By eliminating the distance from the PPV to the duct system greater, vacuum power (airflow and static lift) is achieved. The H2500IV consists of four separate modules that can be separated to ease transport and setup in tight spaces.

Three Standard Filtration Stages:

- First: Cleanable/reusable filter (H2515B)
- Second: High-efficiency deep pleated bag filter (H8518)
- Third: True HEPA filter, certified to capture at least 99.97% of 0.3 micron particles (H2520-99)
- Controls: INTELLIVAC® AC Controller with amperage adjustment switch, hour meter, circuit amperage indicator, voltage adjustment switch, green “power on” and amber “filter change” lamps, audible filter change alarm and differential pressure gauge
- Unit Weight: 198 LBS
- Airflow: 3,000 cfm, 8.4” w.g. static



PART NO: H4500IV

H4500IV INTELLIVAC® Portable Power Vacuum

Recommended for commercial and large residential projects

The dual motor/dual blower HEPA-AIRE H4500IV Portable Power Vacuum is the most powerful unit available for commercial and industrial duct cleaning contractors. This model includes the “SMART” electronics package with Variable Frequency Drive. The four-module design and built-in transport cart allow the user to position the unit into hard to reach areas. With two separate motors and controls there is no need for 230v. Advanced electronic controls provide smooth, efficient operation using two separate 120v, 15A or 20A electrical circuits.

Three Standard Filtration Stages:

- First: Cleanable/reusable filter (H4515B)
- Second: High-efficiency deep pleated bag filter (H8520)
- Third: True HEPA filter, certified to capture at least 99.97% of 0.3 micron particles (H4520-99)
- Controls: Dual INTELLIVAC® AC Controllers with amperage adjustment switches, dual hour meters, dual circuit amperage indicators, dual voltage adjustment switches, dual green “power on” lamps, amber filter change indicator lamp, audible filter change alarm, differential pressure gauge
- Unit Weight: 285 LBS
- Airflow: 4,100 cfm, 8.4” w.g. static

Note: Use airflow ratings and air changes per hour (ACH) as a guideline only. Estimates are based on factory and independent testing @ 120 VAC with an air straightener and a traverse of readings taken with a computing vane-anemometer. Actual results may vary.



Air Compressors

WHAT IS AN AIR COMPRESSOR?

Abatement Technologies® AIRE-SWEEP® Portable Air Compressors provide the compressed air power needed to power our exclusive line of AIRE-SWEEP® and DUCT-PRO® compressed air driven tools, and loosen caked-on dirt and debris from ductwork systems.

AIRE-SWEEP® compressors are the highest quality compressors available and are specially designed to deliver the airflow and air pressure required for effective and efficient duct cleaning.



Exceptional air volume and pressure, high-air-quality output, low maintenance and user-friendly design make AIRE-SWEEP® compressors the most popular in the duct cleaning industry.

All AIRE-SWEEP® Portable Air Compressors ship as a complete kit which includes the following cleaning tools and accessories:

- 12" Aire-Booster Gun with quick-connect fitting
- Forward AIRE-SWEEP® assembly
- Reverse AIRE SWEEP® assembly
- Three each, 50' non-marking, 250psi PVC air line hoses with quick-connect fitting

All Portable Air Compressor models feature:

- Quality engines that start easily and run smoothly for years of trouble-free operation
- Two-stage, solid cast iron pump to produce the high volume and pressure needed for special duct cleaning tools
- Easy access oil drain
- Two-piece, 11-gauge steel belt guard to protect the flywheel

- Permanently mounted bracket for an optional detachable hose reel
- Front lifting handle to facilitate lifting into transport vehicle
- In-line filter to protect against moisture and particulate blowby into the ductwork
- Quick connect for fast connection of airline hose
- The industry's most comprehensive warranty and service programs
- Hundreds of authorized local service centers throughout the country



C17-E AIR
COMPRESSOR
PART NO: C17-185-E



AIRE-SWEEP® C17GH Portable Air Compressor



The heavy-duty AIRE-SWEEP® C17GH Portable Air Compressor is powered by a 9 HP, industrial-grade Honda OHV gas engine. The unit produces an outstanding airflow rate of 17.5 cfm at a rated pressure of 185 psi.

- Two-stage, solid cast iron pump to produce the high volume and pressure needed for the specialized duct cleaning tools
- Large capacity 8-gallon, high-pressure tank
- Large flywheel for extra cooling and longer pump life
- Easily adjusted belt tension
- Rear-mounted fittings and controls
- 7-gauge baseplate reduces vibration

PART NO: C17GH

AIRE-SWEEP® C17GK Portable Air Compressor



The heavy-duty AIRE-SWEEP® C17GK Portable Air Compressor is powered by a 9 HP, industrial-grade Kohler OHC gas engine. The unit produces an outstanding airflow rate of 17.5 cfm at a rated pressure of 185 psi.

- Two-stage, solid cast iron pump to produce the high volume and pressure needed for the specialized duct cleaning tools
- Large capacity 8-gallon, high-pressure tank
- Large flywheel for extra cooling and longer pump life
- Easily adjusted belt tension
- Rear-mounted fittings and controls
- 7-gauge baseplate reduces vibration

PART NO: C17GK

C17-E Portable Electric Air Compressor



The heavy-duty AIRE-SWEEP® C17-185E Portable Air Compressor is powered by a 5 HP, 230 volt/30 amp electric motor. The C17-185E is designed for indoor use when a gas engine is impractical. The unit produces an outstanding airflow rate of 17.5 cfm at a rated pressure of 185 psi.

- Two-stage, solid cast iron pump to produce the high volume and pressure needed for the specialized duct cleaning tools
- Large capacity 9-gallon, high-pressure tank
- Easily adjusted belt tension
- Two-piece, 11-gauge steel belt guard for safety and to protect the flywheel
- Rear-mounted fittings and controls provide convenient access

PART NO: C17-E



AIRE-SWEEP® Power Brush System, Model K3-2000



PART NO: K3-2000

Abatement Technologies AIRE-SWEEP® Power Brush System provides superior duct cleaning performance using specially designed rotary brushes and compressed air to safely remove caked-on dirt and debris from all types of ductwork surfaces. The lightweight, compact electric power unit drives the 25' cable to turn the color-coded cleaning brushes. A remote device gives the operator total control at the point of brush operation.

- Lightweight and compact power unit can be moved easily to any access point in the ductwork
- Quick-connect air fitting attachment to the power unit allows compressed air to be supplied through the cable casing, where a special nozzle blasts debris loosened by the power brush
- Fast, secure assembly of all components using quick-connect fittings
- Reversible, bidirectional cable design cleans both sides of the ductwork resulting in faster and more efficient cleaning
- Variable speed motor provides constant torque at all speeds to handle a variety of duct sizes and materials
- Compact, hand-held remote control allows operator to achieve optimal performance and faster response time at the point of brush operation
- Ruggedly built to withstand the rigors of duct cleaning and provide years of reliable operation

DUCT-PRO® Power Whip System, Model K3-1020



PART NO: K3-1020

The Abatement DUCT-PRO® Power Whip is a 20 foot long, bidirectional drive cable powered by a standard 3/8" or 1/2" electric drill (not included). Whip straps attached to the end of the Power Whip provides aggressive agitation inside the duct system. Special duct brushes can be substituted for the whip straps to provide additional agitation options.

- 20 foot, bidirectional drive cable powered by a standard 3/8" or 1/2" electric drill (not included)
- Bidirectional design permits the operator to clean both sides of a 10' or 20' section from a single access point and clean more difficult square or rectangular ducting
- 1-inch wide nylon straps rotate on 10", 14" or 18" diameter circle to clean the ductwork
- Cleaning head attachment features a unique locking pin mechanism for fast whip or brush changes
- Optional brushes are designed for cleaning all configurations and types of ductwork
- Includes a 20' cable and three whip sizes for optimal cleaning of metal ductwork



DUCT-PRO® Power Rod System



PART NO: C5000

The unique DUCT-PRO® Power Rod System from Abatement Technologies is a versatile agitation device and compressed air tool used to remove caked-on dirt and debris from air duct systems. The Power Rod System blasts compressed air through flexible rods to scrub every square inch of the ductwork in a variety of duct types and configurations.

- Power Rods: Deliver compressed air and “whipping action” to the various whip heads and nozzles.
- 3 ea. 5’ Low-Flex Power Rods for larger and main duct sections and directional control
- 3 ea. 5’ Medium-Flex Power Rods are the most versatile and can be used in combination with Low and High-Flex Power Rods or separately.
- 3 ea. 5’ High-Flex Power Rods provide the most ease in following for smaller branch runs and bends
- Three different Whip Heads are used to mechanically clean the interior surfaces of ductwork. All whip heads are attached to male quick-connect fittings and easily fit through standard 1” access holes.
- 1 each of Single whip head, Three-whip Head, and Eight whip head, all 16” long.
- Forward and reverse nozzles deliver air blasts where conventional Aire-Sweeps cannot reach
- 6’ Airline with Control Valve - Reinforced airline delivers compressed air from the control valve to the rods.
- Rod Case for easy storage and transport
- Rods, nozzles and whip heads are easily and securely connected by quick connects, fitting through 1” access holes
- Fittings and nozzles are made of solid brass for durability

DUCT-PRO® Dryer Vent Cleaning System, Model K3-4000



PART NO: K3-4000

The Abatement Technologies Dryer Vent Cleaning System is designed to increase revenue by adding dryer vent cleaning services for professional duct cleaners. Using a standard power drill (not included), this specially-designed tool loosens debris from dryer vents, prior to removal, using compressed air.

- Flex rods powered by a standard 3/8” or 1/2” electric drill for intense agitation of the contaminants inside the dryer vent system
- Carrying case
- 5 ea. 40” medium flex cleaning rods
- 5 ea. 40” high flex cleaning rods
- Rods and tools snap together via sturdy, precision “QwikSnap” couplings
- Set of brushes: 4”, 6” & 8”
- Lint brush
- 24” high flex lead rod
- 12” spring lead
- Includes drill driver and special “blockage removal” tool to dislodge bird nests and other tough blockages
- Optional adaptor for duct brushes and optional nylon string head



Accessories

3 PICK YOUR ACCESSORIES

Aire-Vac Compressed Air Vacuum



- Converts compressed air into a vacuum without electricity
- Lightweight, compact aluminum body fits through duct access holes to pick up dust, dirt and other contaminants
- Operates on 60-185 psi
- Produces approximately 12 cfm @ 60 psi

PART NO: V80-201

Grill Masks (K1-GM-8 & K1-GM-13)



- The fastest and easiest way to temporarily cover registers & grills
- Masks do not come off if negative pressure is temporarily disrupted
- Convenient dispenser can be worn around the neck or waist
- Available in 8" wide and 13" wide masks and dispensers

PART NO: K1-GM-8 & K1-GM-13

Grill-Masks Dispensers



- The fastest and easiest way to temporarily cover registers & grills
- Masks do not come off if negative pressure is temporarily disrupted
- Convenient dispenser can be worn around the neck or waist
- Available in 8" wide and 13" wide masks and dispensers

PART NO: K1-GM-DS-8 & K1-GM-DS13

Caplugs® (K4-1000) & Zip Screws (K1-ZS1000)



- CAPPLUGS snap quickly and easily into 1" AIRE-SWEEP® access holes
- CAPPLUGS provide snug, leak-proof fit and are easily removed
- Zip screws require no pilot hole
- Sharp points and dual threads provide fast driving and easy penetration

PART NO: K4-1000 & K1-ZS1000

Cut-Resistant Safety Gloves & Sleeves



- Made of cut-resistant Dupont Kevlar® material
- Provides hand and arm protection against sharp edges
- Rugged, yet extremely flexible and lightweight
- Open weave construction enhances user comfort

PART NO: K9-698 & K9-695

Forward AIRE-SWEEP® Assembly (C310K)



- Forces air and debris forward away from the operator
- Can clear an entire branch run from the register to the main
- Ideal for limited-access ducts above plaster ceilings or in slabs
- 5/8" OD hose is flexible enough to maneuver, yet stiff enough not to "curl-back" when air is applied

PART NO: C310K



Accessories

3 PICK YOUR ACCESSORIES

AIRE-BAG® Inflatable Zone Bags



Designed to “zone off” a duct system into smaller, more manageable sections

To use, simply insert the bag into the duct and inflate with air through the 36” inflation tube

Bag conforms to the inside of the duct and forms an excellent seal

- Three sizes available: 18”, 24” & 36”

PART NO: K5-218, K5-224 & K5-236

Reverse AIRE-SWEEP® Assembly



- Nylon nozzle points rearward to force air and debris back toward the operator
- Can clear an entire branch run from the main to the register
- Very flexible hose provides great action inside the duct
- Two lengths available: 25’ (C320K) and 35’ (C335K)

PART NO: C320K & C335K

MALCO® Hole Cutter & VARI-BIT® Hole Saw



- MALCO cuts perfect 2” to 12” diameter holes in metal ductwork for vacuum flex duct connection
- Vari-Bit bores burr-free 1” access holes for inserting the AIRE-SWEEP Tools
- Time-saving tools give your job a precise, professional look

PART NO: K1-HC1 & K2-VB2

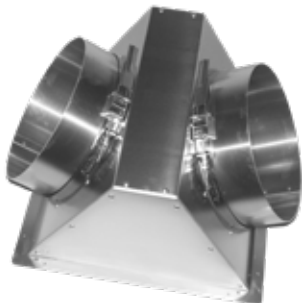
Flex-A-Lite Fogger (K9-2600)



- Converts antimicrobials and/or deodorizers into an aerosol fog that is applied to duct surfaces
- Extra long 48” hose to enable operator to reach overhead ductwork
- Variable output from 0-18 ounces per minute
- 1½ gallon plastic tank
- Two-stage fan provides proper air velocity for creating extremely small droplets

PART NO: K9-2600

Dual Inlet Manifold



- Used to combine two HEPA-AIRE Portable Power Vacuums for maximum airflow on larger jobs
- Simple to use: Attach manifold to ductwork, then attach to 12” inlet flex duct from the two power vacs
- Pre-drilled to facilitate quick attachment to the ductwork
- Gasketed for a tight, leak-proof seal

PART NO: H2580

IS7000 Video Inspection System



- Monitor: 7” TFT color monitor; resolution 1440 x 234 pixels; sunshade for better viewing
- Camera: NTSC - 720 x 480; 120 degree viewing angle; Adjustable LED lights
- DVR: use with SD card (max 32 gb, not included); AVI movie format; snapshot and live feed recording; audio voice over and text over
- Battery: rechargeable Li-ion battery; 7 hour use time; battery charger included

PART NO: IS7000



Pick Your Package

1 PICK YOUR VACUUM

H2200

H2500C

H2500IV

H4500IV

2 PICK YOUR AIR COMPRESSOR

NO COMPRESSOR

C17GH

C17GK

C17-E

3 PICK YOUR TOOLS AND ACCESSORIES

	<input type="checkbox"/> PLATINUM	<input type="checkbox"/> GOLD	<input type="checkbox"/> SILVER	<input type="checkbox"/> BRONZE	PART NO.	DESCRIPTION
Agitation tools	x				K3-2000	Power Brush System
	x	x			K3-2074	Duct Brush 6.5 x 3 in
	x	x	x		C5000	DUCT-PRO® Power Rod System
		x	x	x	K3-1020	Power Whip system 20 ft
		x	x		K3-2090	Brush Package
				x	K3-2072	Duct Brush 12 in x 4 in
				x	K3-2081	7/13/7 Brush
Power Vacuum accessories & filters	x	x			H203012-05	HD PVC Flex Dct 12 x 5 ft
			x	x	H203012-10	HD PVC Flex Dct 12 x 10 ft
	x	x			H2030-12	HD PVC Flex Dct 12 x 12 ft
	x	x	x	x	H2240-12K	Quick connect collar w clamp 12 in
	x	x	x	x	H2250	Quick connect collar 12 in
	x				H2550	Quilted cover H2500IV
	x	x	x		Bag filters	Bag filters to Power Vacuum qty 1
Ductwork tools	x	x	x	x	K2-VB2	Vari Bit Hole Saw
	x	x	x	x	K1-HC1	Malco Hole cutter
	x	x	x	x	K5-224	24 x 24 in Aire-Bag pkg 2
	x	x	x	x	K4-1000	1 in hole plug pk 1,000
	x				C17-HR	Hose Reel w 50 ft hose
	x	x			K1-GM-8	Grillmask 8 in qty 1

CONT



Pick Your Package

	<input type="checkbox"/> PLATINUM	<input type="checkbox"/> GOLD	<input type="checkbox"/> SILVER	<input type="checkbox"/> BRONZE	PART NO.	DESCRIPTION
	x	x			K1-GM-DS-8	Grillmask dispenser 8 in
In-duct Fogger and Chemicals	x	x			K9-2600	Fogger w 48 in Hose
	x	x			K6-4300	BBJ MOLD CONTROL® for HVAC qty 1
Marketing & Training Tools	x				K99-100	Res DC Brochure Pkg 100
	x	x	x	x	K99-DCPDDVD	DC Procedures DVD



EXAMPLE PACKAGE



Chemicals

It is generally agreed that source removal of contaminants remains the single best method for cleaning and decontaminating HVAC systems. However, chemicals may be applied within HVAC systems for a variety of reasons. Applying appropriate cleaning compounds may enhance the cleaning process (e.g., coils, hard surfaces, blowers), we stock the best brands that have been formulated and certified by the EPA for safe application.

BBJ MOLD CONTROL® (K6-4300)



- Controls the growth of mold and mildew in HVAC systems
- EPA registered for use in occupied spaces
- Mix and apply with a fogger or other aerosol method
- 3 bottles/case, one 15 oz. bottle yields 7.5 gallons of solution

PART NO: K6-4300

BBJ FreshDuct Duct Deodorizer (K6-4900)



- Industrial odor control and eliminator for use in HVAC systems
- Formulated for safe application in occupied areas
- Mix and apply with a fogger
- 3 bottles/case, one 15 oz. bottle yields 5 gallons of solution

PART NO: K6-4900

OXINE® Sanitizer (K6-3014012)



- EPA approved for air ducts & ventilation systems as a static agent
- Mix and apply according to manufacturer directions
- 12 bottles/case, one 3.25 oz. bottle yields 1 gallon of solution

PART NO: K6-3014012

FOSTER® Fungicidal Protective Coating (K6-4020)



- Used on HVAC systems
- EPA registered, antimicrobial coating for HVAC duct systems
- Helps prevent the spread of mold and odor causing bacteria
- Tough elastic finish is flexible to allow for movement without splitting
- Apply with brush or airless sprayer
- Sold in 5 gallon pails, 1/each

PART NO: K6-4020

BIO-MIGHT® 100 Coil Cleaner Concentrate (B101)



- Industrial cleaner/degreaser
- Non-toxic and biodegradable
- Mix with water
- Sold in 1 gallon jugs, 4/case

PART NO: B101



Portable HEPA Vacuums



PART NO: V8000WD

Canister Style Wet/Dry HEPA Vac

- Exceptional wet/dry performance: 135 cfm and 92" static lift
- Portable, compact & lightweight design: 22 LBS
- Durable polyethylene cabinet
- 1.6 HP motor
- True 99.97%+ efficiency HEPA filter
- Comes with complete toolset
- 8-Gallon tank capacity
- 22-Foot power cord
- Filters:
 - V8040 - Fleece Filter Bag, 5/pk
 - V8042 - HEPA Filter, DRY USE ONLY, 1/ea
 - V8042-W - HEPA Filter, Wet/Dry Use, 1/ea



PART NO: V930D

Canister Style Dry HEPA Vac

- Exceptional performance: 74 cfm and 92" static lift
- Portable, compact & lightweight design: 16.5 LBS
- Sturdy chrome-plated steel container
- True 99.97%+ efficiency HEPA filter
- Toolset included
- 4-Gallon tank capacity
- 32-Foot power cord
- Filters:
 - V93040 - Replacement Bags, 10/pk
 - V930-10 - HEPA Filter, 1/ea



PART NO: V10D

Backpack HEPA Vac

- Lightweight, ergonomic design to reduce fatigue
- Powerful: 99 cfm airflow & 96" static lift
- Upstream HEPA filter rated 99.99% @ 0.3 microns
- Toolset included
- 50-Foot power cord
- Filters:
 - V1471097500 - Dust Bag, 5/pk
 - V1471104500 - HEPA Filter, 1/ea



CAP[®] Central Air Purifiers

Drive additional revenue and add a layer of protection for your clients after you leave.

Abatement Technologies' line of whole home purification products continually filter the air traveling through the HVAC system to help maintain a high level of indoor air quality within homes and commercial spaces.

Utilizing mechanical HEPA 99.97% filtration, and ultraviolet and optional photolysis oxidation remove harmful particles and pathogens from the air and help protect occupants.

With greater focus on overall health and the impacts these airborne contaminants can have on people, Abatement Technologies CAP[®] systems create an excellent added revenue opportunity for Duct Cleaners and HVAC specialists alike.

Whole House HEPA Protection

HEPA (High Efficiency Particulate Air) filters are some of the most effective small-particle filters available, with media filtration efficiency of 99.97% or higher against 0.3-micron particles. That's why they are used to provide critical air cleaning in areas such as hospital operating rooms, nuclear facilities, and pharmaceutical and in electronics manufacturing. Now true HEPA technology is available for homes.

'Partial Bypass' Installation

CAP[®]600 and 1200 series systems are designed for professional installation into the HVAC air return duct near the air handler, in an out of the way location such as a basement, crawl space or attic. A 'partial bypass' installation configuration enables the device to purify about 50% of the return-air during each pass through the HVAC system. Typically, the entire air volume within the living space of a home can be HEPA filtered 50 to 75 times per day.



CAP[®]600-UV AND CAP[®]600-UVP PURIFIERS
PART NO: 600-UV & 600-UVP



CAP® Central Air Purifiers

CAP®100-UV & CAP®100 UVP Residential Air Purifier



The CAP®100-UV model adds a high-output germicidal UV (UV-C) emitter lamp located between the two filters for even greater control of bacteria, molds, mildew, and viruses that may be present in residential HVAC systems.

- Three-Stage Air Purification System
- MERV 13 Efficiency Rating
- A powerful germicidal UV disinfection lamp
- CAP®100-+UVP model only features a powerful, UV “Plus” dual-frequency germicidal UV disinfection and photolysis lamp to irradiate and destroy allergy and asthma triggering bio-pollutants and eliminate tough, persistent odors

PART NO: 100-UV & 100-UVP

CAP®600-UV and CAP®600-UVP Residential Air Purifiers



The CAP®600 series features the same germicidal UV (UVGI) lamp technology hospitals use to control infectious pathogens to irradiate microbes in the air stream with a high dose of UVGI energy during each pass through the HVAC system.

The CAP®600-UV also features a 1”-deep large particle pre-filter, a 2” VAPOR-LOCK carbon intermediate filter, and a 99.97% HEPA filter.

Multiple filtration stages remove particles far too small to be captured by most types of filters:

- Stage One - A pre-filter for capturing larger dirt particles
- Stage Two - A 2”-deep activated carbon filter for capturing smaller particles and odors
- Stage Three - A 99.97% efficient true HEPA filter
- Stage Four - Germicidal UV disinfection lamp
- CAP®600-UVP model only Germicidal UV Plus (UVP) lamp technology irradiates and helps control mold spores and bacteria

PART NO: 600-UV & 600-UVP



CAP® Central Air Purifiers

CAP® 1200-UV & CAP®1200-UVP



The larger CAP®1200-UV model has about 50% more air filtration capacity than the CAP®600UV. It features an additional 2"-deep particle pre-filter, a heavier duty VAPOR-LOCK® carbon filter, and a higher capacity HEPA filter, for added dirt holding and odor removal capacity.

- Five-stage particle filter system
- UVGI germicidal lamp
- Activated carbon filter
- Rue HEPA filter
- CAP®1200UVP model features an additional UV "Plus" dual-purpose germicidal UV & photolysis oxidation (ozone) lamp

PART NO: 1200-UV & 1200-UVP

CAP®500-UV & CAP®500-UVP Residential Air Purifier



The CAP®600 series features the same germicidal UV (UVGI) lamp technology that hospitals use to control infectious pathogens to irradiate microbes in the air stream with a high dose of UVGI energy during each pass through the HVAC system.

The CAP®600-UV also features a 1"-deep large particle pre-filter, a 2" VAPOR-LOCK carbon intermediate filter, and a 99.97% HEPA filter.

Multiple filtration stages remove particles far too small to be captured by most types of filters:

- Stage One - A pre-filter for capturing larger dirt particles
- Stage Two - A 2"-deep activated carbon filter for capturing smaller particles and odors
- Stage Three - A 99.97% efficient true HEPA filter
- Stage Four - Germicidal UV disinfection lamp
- CAP®600-UVP model only Germicidal UV Plus (UVP) lamp technology irradiates and helps control mold spores and bacteria

PART NO: 500-UV & 500-UVP



Replacement Parts And Accessories

HEPA-AIRE® PORTABLE POWER VACUUMS

PART NO.	PRODUCT DESCRIPTION
H2500IV	HEPA-AIRE H2500IV INTELLIVAC® Four Module Power Vacuum. Complete with all filters and transport sealing plates.
H2500C	HEPA-AIRE® Two Module Economy Power Vacuum. Complete with all filters.
H2200	HEPA-AIRE® Single Module Portable Power Vacuum. Complete with all filters.
H4500IV	HEPA-AIRE Four Module Dual Motor INTELLIVAC® Power Vacuum. Complete with all filters and transport sealing plates.
H2500TF	HEPA-AIRE H2500TF Four Module 220/50 INTELLIVAC® Portable Power Vacuum. Complete with all filters and transport sealing plates. For use in countries with 220-230 volt/50 cycle electrical current.
H4500TF	HEPA-AIRE H4500TF Four Module Dual 220/50 Motor INTELLIVAC® Power Vacuum. Complete with all filters and transport sealing plates. For use in countries with 220-230 volt/50 cycle electrical current.

AIRE-SWEEP® COMPRESSORS

PART NO.	PRODUCT DESCRIPTION	STANDARD CASE PACKAGING
C17GH	AIRE-SWEEP® Portable Gasoline Air Compressor Package. Includes: 1 ea. C17-185GH Air Compressor, 1 ea. C310K, 1 ea. C335K, 1 ea. C307-12, and 3 ea. C250-50.	As Listed
C17GK	AIRE-SWEEP® Portable Gasoline Air Compressor Package. Includes: 1 ea. C17-185GK Air Compressor, 1 ea. C310K, ea. C335K, 1 ea. C307-12, and 3 ea. C250-50.H2200 HEPA-AIRE® SingleModule Portable Power Vacuum. Complete with all filters.	As Listed
C17E	AIRE-SWEEP® Portable Electric Compressor Package. Includes: 1 ea. C17-185E AIRE-SWEEP® Compressor, 1 ea. C310K, 1 ea. C335K, 1 ea. C307-12, and 3 ea. C250-50.H2500TF HEPA-AIRE® H2500TF Four Module 220/50 INTELLIVAC® Portable Power Vacuum. Complete with all filters and transport sealing plates. For use in countries with 220-230 volt/50 cycle electrical current.	As Listed
C17-GH	AIRE-SWEEP® Portable Gasoline Air Compressor only. 2-Stage Cast Iron Pump 17.5cfm@185psi with 9 Horsepower Honda engine.	1 Each
C17-185GK	AIRE-SWEEP® Portable Gasoline Air Compressor only. 2-Stage Cast Iron Pump, 17.5cfm@185psi with 9 Horsepower Kohler engine.	1 Each
C17-185E	AIRE-SWEEP® Portable Electric Air Compressor only. 2-Stage Cast Iron Pump, 17cfm@185psi with 5 Horsepower 230v/30a/60Hz motor.	1 Each



Replacement Parts And Accessories

PORTABLE POWER VACUUM ACCESSORIES

PART NO.	PRODUCT DESCRIPTION	STANDARD CASE PACKAGING
H2250	Inlet Duct Quick Connect.	1 Each
2107	Replacement Stainless Collar Ring for all duct cleaning power vacuums.	1 Each
H2533	Retro-fit Kit for adding casters to upper handle section of H2500 and 2500IV C17-GHAIRE-SWEEP® Portable Gasoline Air Compressor only. 2-Stage Cast Iron Pump, 17.5cfm@185psi with 9 Horsepower Honda engine.	1 Each
H2523	Retro-fit kit to upgrade H2500 (up to serial# 2100) 2" Front Caster Bracket Assembly to Heavy Duty 2-1/2" Direct Mount Front Casters (included) C17-185E AIRE-SWEEP® Portable Electric Air Compressor only. 2-Stage Cast Iron Pump, 17cfm@185psi with 5 Horsepower 230v/30a/60Hz motor.	1 Kit
H2550	Full Length Quilted Cover for H2500, H2500IV or H2500TF Portable Power Vac.	1 Each
H2580	Dual Inlet Manifold, for connecting two vacuum systems together.	1 Each
EDP78	Replacement Power Cord for H2500C and H2200.	1 Each
H2092-25TL	Power Cord with Turn and Lock Female End, #12/3 AWG, 25' length (for all 110 volt HEPA-AIRE® PPV models with twist-lock receptacles).	1 Each
H2092-25TF	Power Cord with Turn and Lock Female End, #12/3 AWG, 25' length (for all 220 volt HEPA-AIRE® PPV TF models with twist-lock receptacles).	1 Each
H2092-25	Extension Cord, #12/3 AWG, 25' length, straight blade.	1 Each
CASTER03	2" Replacement Caster for upper handle section on H2500 models and H2500 with bracket assembly (before serial # 2100).	1 Each
CASTER06	2-1/2" Replacement Heavy Duty Front Wheels or H4500 series, H2500IV, H2500C, and H2500 without Bracket Assembly.	1 Each
CASTER02	3" Replacement Front Wheels for H2200.	1 Each
CASTER05	Replacement 10" Non-Marking Rear Wheels for H2500 & H4500 Series.	1 Each
H2530	Replacement Stair Climber Assembly for all models.	1 Each
H2535	Replacement Tracks with Non-Marking Belts for Stair Climber for all models.	2 Each
H2540	Replacement Belts for H2535 Stair Climber.	2 Each
H2256	Replacement Brushes for DC Motors in H2200 and H4500 (before 3-08, two per case).	1 Case
H2212-08	Tapered Reducing Collar, 12" to 8", satin coat finish.	1 Each
H2240-08K	Quick-Connect Attachment Collar for 8" Flex Duct (includes H2350-08 locking clamp).	1 Each
H2240-12K	Quick-Connect Attachment Collar for 12" Flex Duct (includes H2350-12 locking clamp).	1 Each
H2350-08	8" Replacement Locking Clamp.	1 Each
H2350-12	12" Replacement Locking Clamp.	1 Each
LATCH04B	Sm. Keeper for H2200, H2500 & H4500 series filter door and panel cover.	1 Each
LATCH04	Sm. Latch for H2200, H2500 & H4500 series filter door and panel cover.	1 Each
LATCH05B	Lg. Keeper for H2500 & H4500 series modules.	1 Each
LATCH05	Lg. Latch for H2500 & H4500 series modules.	1 Each



Replacement Parts And Accessories

POWER VACUUM FLEX DUCT

PART NO.	PRODUCT DESCRIPTION	STANDARD CASE PACKAGING
H2030-08	Clear Heavy Duty PVC Flex Duct. Wire reinforced, 8" diameter x 25' length 2107 Replacement Stainless Collar Ring or all duct cleaning power vacuums.	1 Each
H2030-12	Clear Heavy Duty PVC Flex Duct. Wire reinforced, 12" diameter x 25' length.	1 Each
H203012-05	Clear Heavy Duty PVC Flex Duct. Wire reinforced, 12" diameter x 5' length.	1 Each
H203012-10	Clear Heavy Duty PVC Flex Duct. Wire reinforced, 12" diameter x 10' length.	1 Each
H2308-08	Duct Hose Joint. Satin coat finish (joins 2 sections of 8" flex duct).	1 Each
H2312-12	Duct Hose Joint. Satin coat finish (joins 2 sections of 12" flex duct).	1 Each

AIRE-SWEEP® COMPRESSOR ACCESSORIES

PART NO.	PRODUCT DESCRIPTION	STANDARD CASE PACKAGING
C17-HR	Detachable Hose Reel with 50' of Rubber Outdoor Hose.	1 Each
C250-50	3/8" x 50' Airline Hose Assembly, 250 psi rating, non-marking PVC Hose with quick-connect fittings (green hose).	1 Each
C310K	Forward AIRE-SWEEP® Assembly with 20' black hose.	1 Each
C3113	Replacement Forward AIRE-SWEEP® Nozzles (for C310K).	3 Each
C320K	Reverse AIRE-SWEEP® Assembly with 25' Clear Hose.	1 Kit
C335K	Reverse AIRE-SWEEP® Assembly with 35' Clear Hose).	1 Kit
C300-K2	Reverse AIRE-SWEEP® Assembly with 35' Reinforced Hose.	1 Kit
C3213	Replacement Reverse AIRE-SWEEP® Nozzles (for C320K, C335K, C300-K2).	3 Each
C304	Hand Operated Air Valve, includes male quick connect fitting.	1 Each
C307-12	12" Aire-Booster Gun, includes male quick connect fitting.	1 Each
C307-24	24" Aire-Booster Gun, includes male quick connect fitting.	1 Each
C307-48	48" Aire-Booster Gun, includes male quick connect fitting.	1 Each
C17-190225	Replacement Air Filter Assembly for all Mi-T-M pumps with 9 H.P. engines (after 1-1-03).	1 Each
C17-190226	Replacement Air Filter Only for all Mi-T-M pumps with 9 H.P. engines (after 1-1-03).	1 Each
C17-G54E	Replacement Air Filters (2 Required) for Emglo compressors bought prior to 1-1-03.	1 Each
C350-08	Replacement Air Filter Element for 8 and 9 H.P. Honda Engines.	1 Each
C350-SR	Replacement Air Filter Element for 9 H.P. Subaru Engine.	1 Each
V80-201	Aire-Vac Compressed Air Vacuum Kit.	1 Each
V99-645	Replacement Filter Bag For V80-201.	1 Each



Replacement Parts And Accessories

AIRE-SWEEP® POWER BRUSH SYSTEM

PART NO.	PRODUCT DESCRIPTION	STANDARD CASE PACKAGING
K3-2000	Complete AIRE-SWEEP® Power Brush System. Includes: 1 ea. K3-2020, K3-2021X, K3-2025 & K3-2090.	As Listed
K3-2000TF	Same as K3-2000 except for use on 220 volt/50 hz circuit only.	As Listed
K3-2020	Power Brush Power Unit, 110v/60hz.	1 Each
K3-2020TF	Power Brush Power Unit, 220v/50hz.	1 Each
K3-2021X	Remote Control with 15' Cable for Power Units Above Serial Number 2000.	1 Each
K3-2025	25' Flexible Drive Shaft with Nozzle.	1 Each
K3-11755	Replacement Inner Cable for K3-2025 (Mfg. After 11-01, Identifiable by Gold Sticker on Cable Drive End).	1 Each
K3-2060	Nylon Tote Bag for K3-2021 and K3-2025.	1 Each
K3-11752	Replacement Nozzle for K3-2025 (Mfg. After 11-01, Identifiable by Gold Sticker on Cable Drive End).	1 Each
K3-2090	Brush Set for K3-2000 and K3-1020 Includes: 1 each (K3-2071, K3-2072, K3-2073, K3-2081, and K3-2082).	1 Set
K3-2074	6 1/2" x 3" Soft Poly Brush.	1 Each
K3-2071	8" x 4" Soft Poly Brush.	1 Each
K3-2072	12" x 4" Soft Poly Brush.	1 Each
K3-2073	18" x 4" Soft Poly Brush.	1 Each
K3-2081	7"/13"/17" x 8" Poly Step Brush.	1 Each
K3-2082	11"/18"/11" x 8" Poly Step Brush.	1 Each
K3-117541	Hex Coupler-Shaft.	1 Each

DUCT-PRO® POWER WHIP SYSTEM

PART NO.	PRODUCT DESCRIPTION	STANDARD CASE PACKAGING
K3-1020	Power Whip System with 20' Cable. Includes: 1 ea. of 10", 14", and 18" whips K3-2000TF Same as K3-2000 except for use on 220 volt/50 hz circuit only.	1 Each
K3-1120	Replacement 20' Cable Only for K3-1020.	1 Each
K3-11515-1	Replacement inner cable for K3-1020.	1 Each
K3-1210	Replacement whips, 10" diameter.	5 Each
K3-1214	Replacement whips, 14" diameter.	5 each
K3-1218	Replacement whips, 18" diameter.	5 each
K3-2090	Brush Set for K3-2000 and K3-1020. Includes: (1 ea. of: K3-2071, K3-2072, K3-2073, K3-2081, and K3-2082). K3-4007 is needed with K3-2090 brush kit when using dryer vent rods.	1 Set



Replacement Parts And Accessories

DUCT-PRO® POWER ROD SYSTEM

PART NO.	PRODUCT DESCRIPTION	STANDARD CASE PACKAGING
C5000	DUCT-PRO® Power Rod System Complete. Includes: 3 ea. C5001, C5002, C5003; 1 ea. C5038, C5011, C5021, C5050, C5053, C5058, and C5060K3-2000TF Same as K3-2000 except for use on 220 volt/50 hz circuit only.	As Listed
C5001	5' Low-Flex Duct Pro® Power Rods (black band).	1 Each
C5002	5' Medium-Flex DUCT-PRO® Power Rods (red band).	1 Each
C5003	5' High-Flex DUCT-PRO® Power Rods (no band).	1 Each
C5038	Rod Case for Power Rods.	1 Each
C5011	Forward Power Rod Nozzle (Brass).	1 Each
C5021	Reverse Power Rod Nozzle (Brass).	1 Each
C5050	Single Whip Power Rod Head, Black Hose.	1 Each
C5053	Three-Whip Power Rod Head, Clear Hose.	1 Each
C5058	Eight-Whip Power Rod Head, Black & Red.	1 Each
C5060	6' Airline with Control Valve.	1 Each
C5061	Replacement 6' Airline with Fitting for C5060.	1 Each
C5070	16" Whips for Single Whip Head (Black, 3 per case).	1 Case
C5072	16" Whips for Three-Whip Head (Clear, 3 per case).	1 Case
C5071	24" Whips for Single Whip Head, (12 per case, whip only).	1 Case
C5078	16" Whips for Eight-Whip Head, (2 sets per case, whip only).	1 Case
C5066	Air Control Valve for Power Rod System.	1 Each
C5040	Replacement Brass Threaded Fitting for all Heads.	1 Each

DUCT-PRO® DRYER VENT CLEANING SYSTEMS

PART NO.	PRODUCT DESCRIPTION	STANDARD CASE PACKAGING
K3-4000	Residential/Commercial Dryer Vent Cleaning System. Includes: 5 ea. K3-4002, 5ea K3-4003, 1ea. K3-4004, 1 ea. K3-4005, K3-4006, K3-4024, K3-4026, K3-4028, K3-4011, K3-4020, and K3-4030.	As Listed
K3-4002	40" High-Flex Dryer Vent Cleaning Rod.	1 Each
K3-4003	40" Medium-Flex Dryer Vent Cleaning Rod.	1 Each
K3-4004	24" High Flex Dryer Vent Lead Rod.	1 Each
K3-4005	12" Spring Lead.	1 Each
K3-4006	Drill Driver Head Adapter for Dryer Vent Flex Rods.	1 Each
K3-4007	Adapter to use Dryer Vent Rods with Duct Cleaning Brushes (K3-2090).	1 Each
K3-4011	Blockage Remover.	1 Each
K3-4013	Nylon Whip Head.	1 Each
K3-4014	Set of Replacement Whips for K3-4013.	1 Set
K3-4020	Dryer Lint Brush.	1 Each



Replacement Parts And Accessories

DUCT-PRO® DRYER VENT CLEANING SYSTEMS

PART NO.	PRODUCT DESCRIPTION	STANDARD CASE PACKAGING
K3-4024	4" Dryer Brush with coupler.	1 Each
K3-4026	6" Dryer Brush with coupler.	1 Each
K3-4028	8" Dryer Brush with coupler.	1 Each
K3-4030	Case for Dryer Vent Cleaning Rods.	1 Each
K3-7320	4" Dryer Vent Brush on 20' Handle for Manual Cleaning.	1 Each
K3-2090	Duct Brush Set. Includes: 1 ea. K3-2071, K3-2072, K3-2073, K3-2081, and K3-2082. Must be used with K3-4007 Duct Brush Adapter.	1 Set

DUCT-PRO® TOOLS AND ACCESSORIES

PART NO.	PRODUCT DESCRIPTION	STANDARD CASE PACKAGING
K1-GM-8	Grill-Mask 8" wide x 185' long roll, (6 rolls per case).	1 Case
K1-GM-13	Grill-Mask 13" wide x 185' long roll, (3 rolls per case).	1 Case
K1-GM-DS-8	Grill-Mask Dispenser for 8" wide Grill-Mask.	1 Each
K1-GM-DS13	Grill-Mask Dispenser for 13" wide Grill-Mask.	1 Each
K1-HC1	Malco® 2" - 12" Hole Cutter.	1 Each
K1-CB	Replacement Bit for K1-HC1 Hole Cutter.	1 Each
K1-HC1B	Replacement Pivot Pin for K1-HC1.	1 Each
K1-ZS1000	Zip Screws, (7 x 1/2), (1,000 per pkg.).	1 Pkg.
K2-VB2	Vari-Bit® 1" Hole Cutter.	1 Each
K4-1000	Premium 1" Plastic Hole Plugs, (1,000 per pkg.).	1 Pkg.
K5-218	18" x 18" Aire-Bag inflatable 20 Mil PVC Zone Bags.	2 Each
K5-224	24" x 24" Aire-Bag inflatable 20 Mil PVC Zone Bags.	2 Each
K5-236	36" x 36" Aire-Bag inflatable 20 Mil PVC Zone Bags.	2 Each
K9-695	Kevlar® Cut-Resistant Sleeve, 21" long, for protection against arm cuts.	1 Each
K9-698	Kevlar® Cut-Resistant Glove, mens size large, for protection against hand cuts.	1 Each
K9-2600	Flex-a-Lite Fogger, with 48" hose.	1 Each
K9-2600-TF	Flex-a-Lite Fogger with 48" hose for use in countries with 220/50 current.	1 Each
HCKT12	Pogo Poles for Holding Quick Connect to Ceiling, extends to 12', includes grip disks, two poles and discs per kit.	1 Kit



Replacement Parts And Accessories

CHEMICALS

PART NO.	PRODUCT DESCRIPTION	STANDARD CASE PACKAGING
K6-4300	BBJ MOLD CONTROL® for HVAC Systems and Air Ducts, (one 15 oz. bottle yields 7.5 gallons of solution, 3 bottles per case).	3 Bottles
K6-4900	BBJ FreshDuct Duct Deodorizer, (one 15 oz. Bottle yields 5 gallons of solution, 3 bottles per case).	3 Bottles
K6-3014012	OXINE® Sanitizer, (one 3.25 oz. Bottle yields 1 gallon of solution, 12 bottles per case).	12 Bottles
B101	BIO-MIGHT® 100 Coil Cleaner Concentrate, 1 gallon jug (dilute with water).	4 Jugs
K6-4020	FOSTER® Fungicidal Protective Coating, 5 gallon pail.	1 Pail
K6-4023	FOSTER® Duct Liner Insulation Sealer, 5 gallon pail.	1 Pail

VIDEO INSPECTION SYSTEM MODEL IS7000

PART NO.	PRODUCT DESCRIPTION	STANDARD CASE PACKAGING
IS7000NTSC	Complete Duct Video Inspection System. Includes: Camera, carrying case, cable wheel, DVR, monitor, battery, charger, mini keyboard, camera skids, earphones. NTSC for domestic markets.	As Listed
IS7000PAL	Complete Duct Video Inspection. System Includes: Camera, carrying case, cable wheel, DVR, monitor, battery, charger, mini keyboard, camera skids, earphones. PAL unit is for international markets.	As Listed
IS7000C	Replacement camera head.	1 Each
IS7000CPAL	Replacement PAL camera head.	1 Each
IS7000W	Replacement cable wheel.	1 Each
IS7000D	DVR control box with USB interface.	1 Each
IS7000M	7" monitor.	1 Each
IS7000B	Rechargeable Li-ion battery.	1 Each
IS7000K	Mini keyboard.	1 Each
IS7000CS	Camera skids.	1 Each
IS7000VC	Replacement DVR to reel connection cable.	1 Each



Our Main Warehouse Locations

US
 Abatement Technologies, Inc.
 605 Satellite Blvd. Suite 300
 Suwanee, GA 30024
 U.S. 800-634-9091
 Intl. +01-678-889-4200
 Mon-Fri 8 am - 5:30 PM Eastern
iaqinfo@abatement.com

Canada
 Abatement Technologies Limited
 7 High Street
 Fort Erie, ON L2A 3P6
 CAN. 800-827-6443
 Intl. +01-905-871-4720
iaqinfo@abatement.ca

Our Satellite Warehouse Locations

Vancouver
 F102-19720-94A Avenue,
 Langley BC V1M 3B7
 778-372-2611

Edmonton
 16403 - 117 Ave.
 NW Edmonton, AB T5M 3V3
 780-665-5165

Hamilton
 428 Millen Rd. Unit 10
 Stoney Creek, ON L8E 3N9
 905-664-6075

Toronto
 144 Sharer Rd.
 Vaughan, ON L4L 8P4
 905-266-1322

Ottawa
 51 Capital Drive
 Ottawa, ON K2G 0E7
 613-749-9667

Montreal
 1950 Bernard Lefebvre
 Laval, QC H7C 0A5
 514-375-0606

Dartmouth
 121 Ilsley Ave Unit 12
 Dartmouth, NS B3B 1J1
 902-334-0900

1.800.634.9091

ABATEMENT.COM

IAQINFO@ABATEMENT.COM

Compliance With Standards and Guidelines

For the past 20 years, Abatement Technologies has provided health care facilities with the technology they need to comply with current infection-control standards and practices in an effective and economical manner. These include guidelines developed by The Centers for Disease Control and Prevention (CDC), Health Canada, the Canadian Standards Association (CSA), the American Institute of Architects (AIA), Department of Homeland Security HRSA Critical Benchmark 2.2, and Joint Commission requirements.