

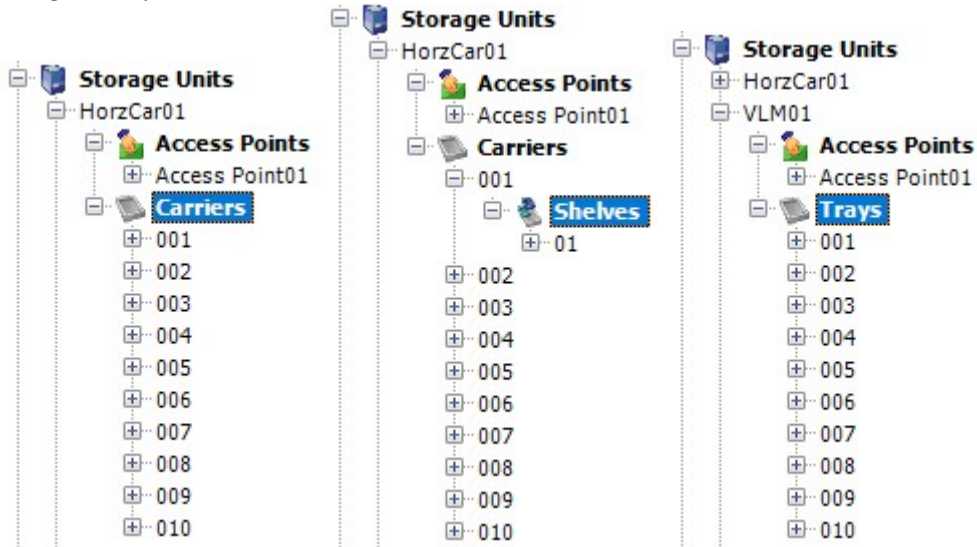
How to Add Trays, Carriers or Shelves

Kardex Power Pick System

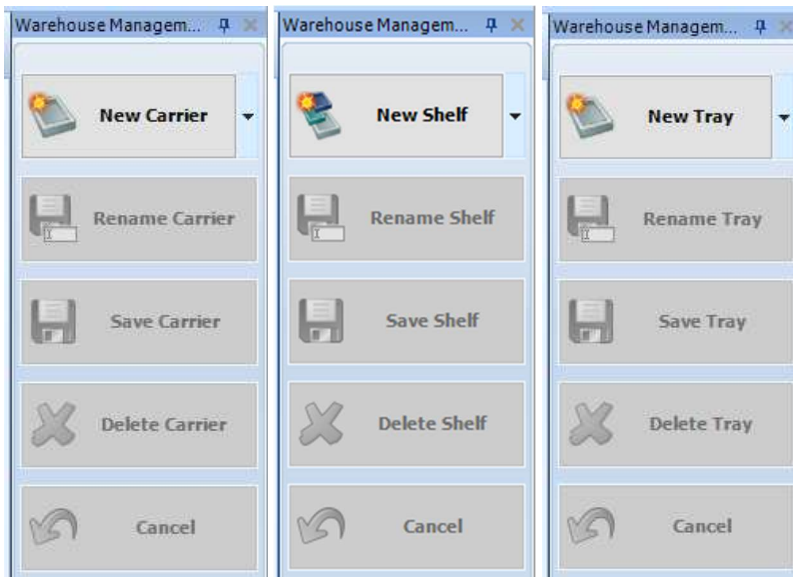
How To Add Trays, Carriers Or Shelves

Add Shelves & Carriers

1. Select the appropriate Storage Unit, navigate to the Carrier, Shelf or Tray dropdown section using the expansion icon



2. Hit the "New ..." button to the right of the screen



- Enter the Details, Limitation Details, and Dimension Details according to user requirements. (Be mindful that measurements are inch 100s and not an actual inch. i.e. 3 and a half inches is 350, 96 inches is 9600)

Carrier Details

Carrier Name:

Storage Unit:

Carrier Number:

Carrier Width:

Carrier Depth:

LimitationDetails

Maximum Weight:

Shelf Details

Shelf Name:

Tray Name:

Sequence Number:

Shelf Number:

Zone Name:

LimitationDetails

Minimum Height:

Maximum Height:

Maximum Weight:

DimensionDetails

Shelf Width:

X (Grid):

Carrier Width:

Shelf Depth:

Y (Grid):

Carrier Depth:

X Coordinate:

Y Coordinate:

Z Coordinate:

Naming Conventions

Auto Generate Location Names

Tray Details

Tray Name:

Storage Unit:

Tray Number:

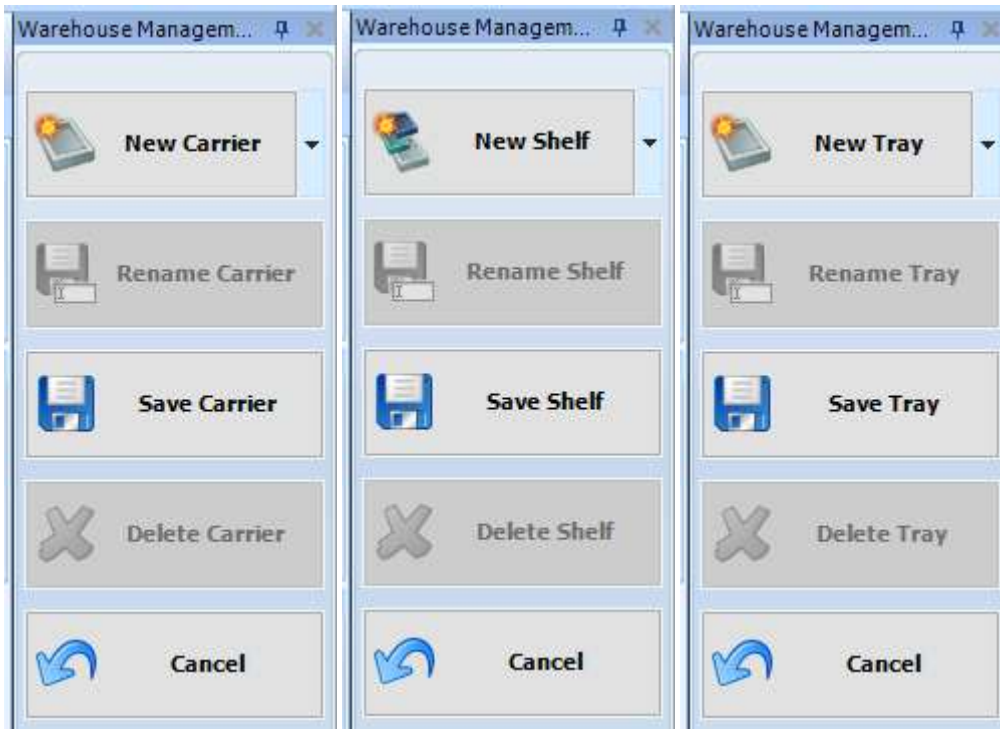
Carrier Width:

Carrier Depth:

LimitationDetails

Maximum Weight:

4. Save!



[Visit our Customer Knowledge Center for more articles like this.](#)