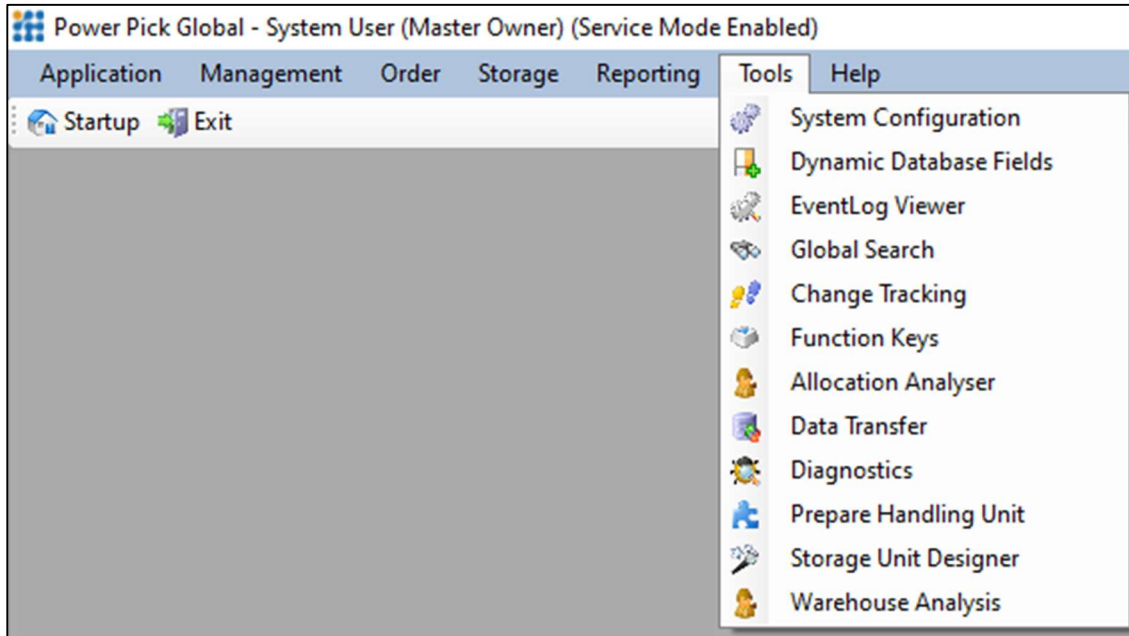


# How to Manually Run a Data Transfer

Kardex Power Pick System

## How To Manually Run a Data Transfer

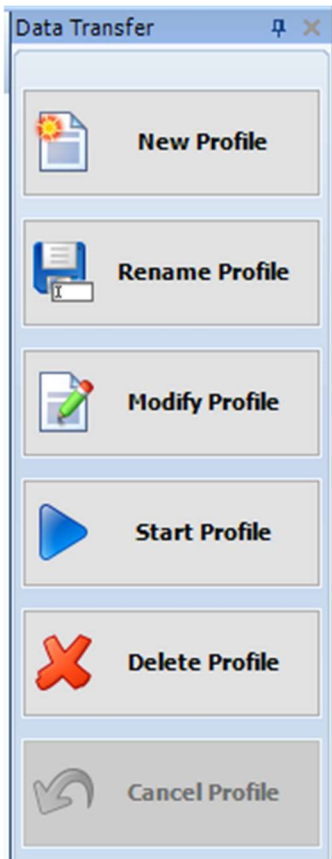
1. Open the Data Transfer screen Tools > Data Transfer



2. Highlight the profile you would like to run



3. Click "Start Profile"



NOTE: You can only run profiles that are assigned to the Station that you are on.

[Visit our Customer Knowledge Center for more articles like this.](#)