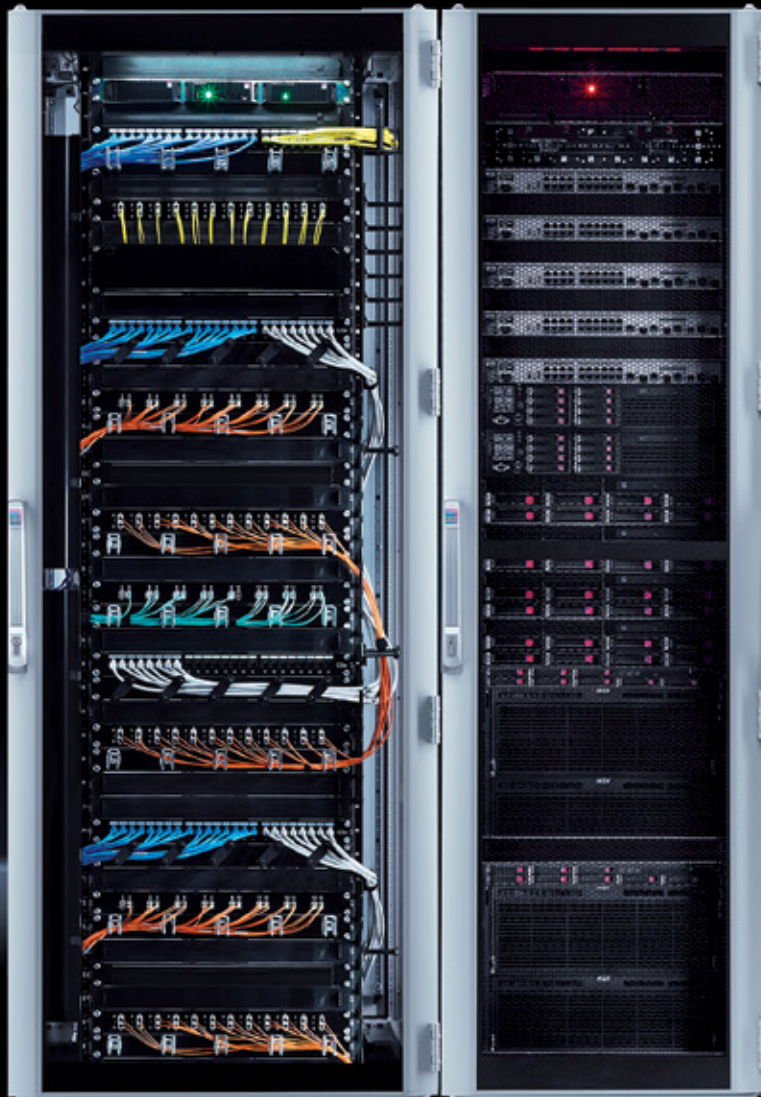


# Rittal – The System.

Faster – better – everywhere.

## ► TS IT Server/Network Enclosures



ENCLOSURES

POWER DISTRIBUTION

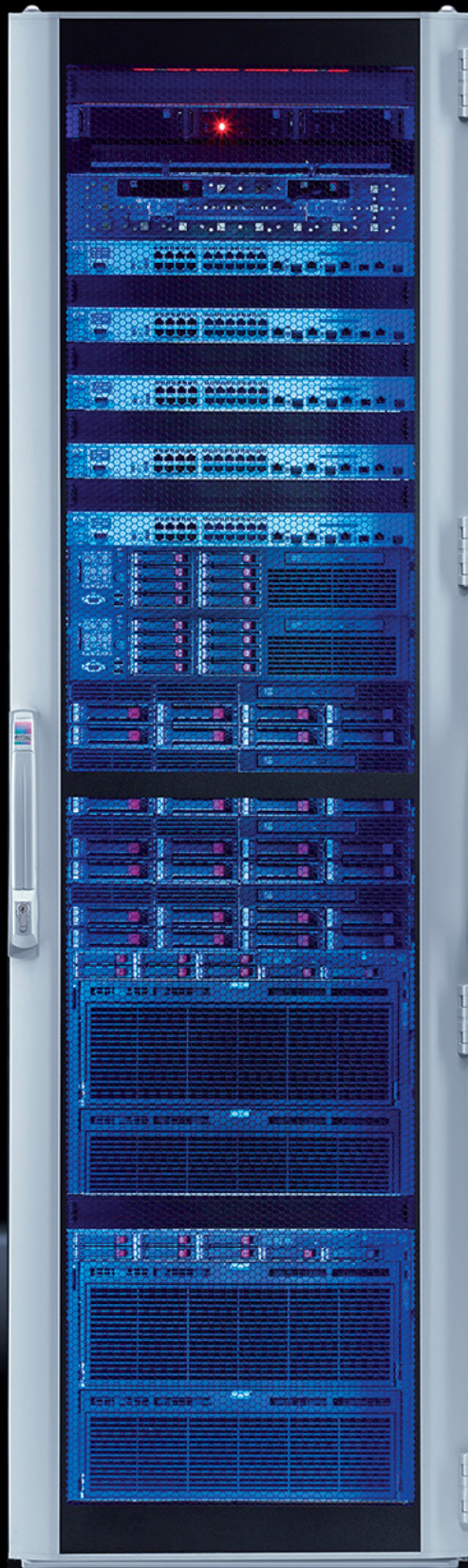
CLIMATE CONTROL

IT INFRASTRUCTURE

SOFTWARE & SERVICES



FRIEDHELM LOH GROUP





## Choose Rittal For Maximum Flexibility Delivers Maximum Cost-Efficiency

Rittal has redefined the standard in Server and Network enclosures with the TS IT modular system, featuring tool-less, snap-in installation technology that improves operating efficiency while reducing costs. Easy to deploy and providing a stable and secure installation environment for IT equipment, the TS IT system can be easily reconfigured to meet future installation demands. With a streamlined design providing an optimum price/performance ratio, the TS IT system establishes a new standard in functionality, supporting the demanding requirements placed on today's server and network enclosures.

- Most commonly requested dimensions – 24"/28"/32" widths. 40"/42"/48" depths.
- Offset positioning for mounting widths of 19", also 21" and 23" possible with 28" and 32" wide enclosures
- Viewing door or 85% perforated door options
- 180-degree hinges on both front and rear doors for unhindered access
- Roof with dual front to rear brush baffled openings can be removed without disconnecting cables
- High load carrying capacity—up to 3,300 lbs
- Engineered solutions for cable routing and management
- Seamless integration with all of Rittal's LCP in row cooling options
- Comprehensive range of accessories for power, cable and air flow management
- Tool-free installation of many accessories



## How TS IT Makes IT Fast

- Design flexibility allows integration of high density solutions
- Integrated design process ensures compatibility across different configurations
- Snap-in technology allows for fast assembly of accessory components

The TS IT delivers dimensional flexibility and supports the integration of a variety of IT solutions to support numerous network configurations. To adjust the 19-inch levels, just loosen the quick-release fastening, then slide and lock the mounting angles at the required depth. Lateral offset positioning allows for asymmetrical interior installations and makes it easy to select mounting widths greater than 19 inches.

With the greatest amount of internal useable volume, the TS IT has room for everything. New Ethernet technologies such as 10 GB or 40 GB (with their higher cabling demands) are easily supported. Cabling can be routed via the roof, from the sides or from the base.

## How TS IT Makes IT Simple

- High load carrying capacity—up to 3,300 lbs
- Intelligent cable management system
- Extensive range of accessories

The TS IT can support up to 3,300 lbs. without any additional screw joints, a capability made possible by our depth stays that transmit the load to the enclosure's frame. The quick-release fasteners simplify initial assembly, any subsequent modifications, and installation of accessory components.

For added safety, the tool-free installation accessories (cable duct, air baffle plate, cable route and floor holder) have integrated holes to allow optional screw fastening. Slide rails, component shelves, telescopic slides and more simply snap into the rear sections and hook into the front EIA rail sections.





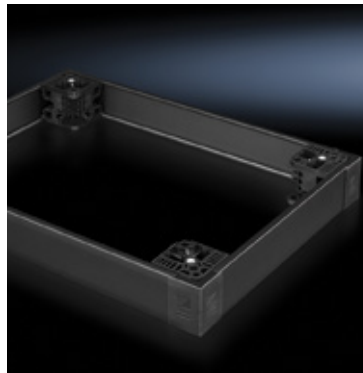
**Choose the Best:**  
Accessories deliver more  
custom design options

## System Accessories



### Viewing and Vented Doors

Choose glass for rack climate control or vented for room climate control.



### Base/Plinth System

Flexible base/plinth system for practically every application.



### Airflow Options

Baffles, gland plates and blanking panels designed to provide optimal air flow in an enclosure.



### Security Options

Flexible access, either 3-digit code keyless or master control functionality.



### Cable Management

Ducts, fingers, cable management panels, cable management walls and D-rings keep cables organized.



### Shelving and System Chassis

Install heavy equipment securely within a 19-inch rack.

TS IT Enclosure with Perforated Front/Rear Doors					
Part No. RAL 9005	Part No. RAL 7035	U	Height inches (mm)	Width inches (mm)	Depth inches (mm)
5504.210	5504.110	24	48 (1200)	32 (800)	40 (1000)
5508.210	5508.110	42	80 (2000)	24 (600)	40 (1000)
5509.210	5509.110	42	80 (2000)	32 (800)	40 (1000)
5521.210	-	42	80 (2000)	24 (600)	41 (1050)
9972.000	9972.001	42	80 (2000)	28 (700)	41 (1050)
5522.210	-	42	80 (2000)	32 (800)	41 (1050)
5510.210	5510.110	42	80 (2000)	24 (600)	48 (1200)
9972.002	9972.003	42	80 (2000)	28 (700)	48 (1200)
5511.210	5511.110	42	80 (2000)	32 (800)	48 (1200)
5513.210	5513.110	47	88 (2200)	24 (600)	40 (1000)
5514.210	5514.110	47	88 (2200)	32 (800)	40 (1000)
5523.210	-	47	88 (2200)	24 (600)	41 (1050)
5524.210	-	47	88 (2200)	32 (800)	41 (1050)
9972.004	9972.005	47	88 (2200)	28 (700)	41 (1050)
5515.210	5515.110	47	88 (2200)	24 (600)	48 (1200)
9972.006	9972.007	47	88 (2200)	28 (700)	48 (1200)
5516.210	5516.110	47	88 (2200)	32 (800)	48 (1200)
TS IT Enclosure with Viewing Front Door – Solid Rear Door					
Part No. RAL 9005	Part No. RAL 7035	U	Height inches (mm)	Width inches (mm)	Depth inches (mm)
5503.220	5503.120	24	48 (1200)	32 (800)	32 (800)
5504.220	5504.120	24	48 (1200)	32 (800)	40 (1000)
5505.220	5505.120	38	71 (1800)	32 (800)	32 (800)
5506.220	5506.120	42	80 (2000)	32 (800)	24 (600)
5507.220	5507.120	42	80 (2000)	32 (800)	32 (800)
5508.220	5508.120	42	80 (2000)	24 (600)	40 (1000)
5509.220	5509.120	42	80 (2000)	32 (800)	40 (1000)
5510.220	5510.120	42	80 (2000)	24 (600)	48 (1200)
5511.220	5511.120	42	80 (2000)	32 (800)	48 (1200)
5512.220	5512.120	47	88 (2200)	32 (800)	32 (800)
Airflow Management					
Part No.	Description				Packs of
5501.805	Air baffle plate 24 x 80" (600 x 2000 mm)				1 set
9972.925	Air baffle plate 28 x 80 (700 x 2000 mm)				1 set
5501.815	Air baffle plate 32 x 80" (800 x 2000 mm)				1 set
5501.825	Air baffle plate 24 x 88" (600 x 2200 mm)				1 set
9972.926	Air baffle plate 28 x 88" (700 x 2200 mm)				1 set
5501.835	Air baffle plate 32 x 88" (800 x 2200 mm)				1 set
9960.676	1U Blanking panel (sand texture black), plastic				12
9970.016	1U Blanking panel (sand texture black), metal				10
9970.017	3U Blanking panel (sand texture black), metal				5
Shelves					
Part No.	Description				Packs of
5501.615	Component shelf, 2 U, static installation (250 mm)				1 set
5501.625	Component shelf, 2 U, static installation (400 mm)				1 set
5501.655	Component shelf, 0.5 U, static installation (400 - 600 mm)				1 set
5501.665	Component shelf, 0.5 U static installation (600 - 900 mm)				1 set
5501.695	Component shelf, 1 U static installation (400 - 600 mm)				1 set
5501.705	Component shelf, 1 U static installation (600 - 900 mm)				1 set
5501.675	Component shelf, 1 U pull-out, 500 mm				1 set
5501.685	Component shelf, 1U pull-out 700 mm				1 set
5501.715	Component shelf, 1.5 U pull-out 500 mm				1 set
5501.725	Component shelf, 1.5 U pull-out 700 mm				1 set
Sidewalls					
Part No. RAL 9005	Part No. RAL 7035	Description			Packs of
5501.005	5501.000	Side panel divided 71 x 32" (1800 x 800 mm)			1
5501.015	5501.010	Side panel divided 80 x 24" (2000 x 600 mm)			1
5501.025	5501.020	Side panel divided 80 x 32" (2000 x 800 mm)			1
5501.035	5501.030	Side panel divided 80 x 40" (2000 x 1000 mm)			1
5501.045	5501.040	Side panel divided 80 x 48" (2000 x 1200 mm)			1
5501.055	5501.050	Side panel divided 88 x 32" (2200 x 800 mm)			1
5501.065	5501.060	Side panel divided 88 x 40" (2200 x 1000 mm)			1
5501.075	5501.070	Side panel divided 88 x 48" (2200 x 1200 mm)			1
5501.095	-	Side panel divided 80 x 41" (2000 x 1050 mm)			1
5501.105	-	Side panel divided 88 x 41" (2200 x 1050 mm)			1

Sidewalls (continued)			
Part No. RAL 9005	Part No. RAL 7035	Description	Packs of
9966.010	8175.235	TS IT Solid SIDE WALLS (1200 H x 800 D)	2
9966.011	8108.235	TS IT Solid SIDE WALLS (2000 H x 800 D)	2
9966.012	8100.235	TS IT Solid SIDE WALLS (2000 H x 1000 D)	2
9966.013	9969.309	TS IT Solid SIDE WALLS (2000 H x 1050 D)	2
9966.014	9969.955	TS IT Solid SIDE WALLS (2000 H x 1200 D)	2
9966.015	8128.235	TS IT Solid SIDE WALLS (2200 H x 800 D)	2
9966.016	9968.593	TS IT Solid SIDE WALLS (2200 H x 1000 D)	2
9966.017	9969.312	TS IT Solid SIDE WALLS (2200 H x 1050 D)	2
9966.018	9969.957	TS IT Solid SIDE WALLS (2200 H x 1200 D)	2
Partition Walls (Bayed Application)			
Part No. RAL 9005	Description		Packs of
9971.042	TS IT Partition Wall with Cable openings (2000 H x 1000 D)		1
9971.043	TS IT Partition Wall with Cable openings (2000 H x 1050 D)		1
9971.044	TS IT Partition Wall with Cable openings (2000 H x 1200 D)		1
9971.046	TS IT Partition Wall with Cable openings (2200 H x 1000 D)		1
9971.047	TS IT Partition Wall with Cable openings (2200 H x 1050 D)		1
9971.048	TS IT Partition Wall with Cable openings (2200 H x 1200 D)		1
9978.378	TS IT Partition Wall Solid (2000 H x 1000 D)		1
9978.379	TS IT Partition Wall Solid (2000 H x 1050 D)		1
9978.380	TS IT Partition Wall Solid (2000 H x 1200 D)		1
9978.382	TS IT Partition Wall Solid (2200 H x 1000 D)		1
9978.383	TS IT Partition Wall Solid (2200 H x 1050 D)		1
9978.384	TS IT Partition Wall Solid (2200 H x 1200 D)		1
Cable Management (Internal)			
Part No.	Description		Packs of
5502.100	Cable duct for enclosure height 80" (2000 mm) 32" W only		1
5502.101	Cable duct for enclosure height 88" (2200 mm) 32" W only		1
9972.927	Cable duct for 80"H (2000 mm) 28"W (700 mm) or 32" W (800 mm)		1
9972.912	Cable Management Fingers 20U for 42 U (2000 mm H)		2
9972.913	Cable Management Fingers 22U for 47 U (2200 mm H)		2
5502.115	Cable finger 6U		14
5502.205	Cable management panel with 5 steel brackets 1U		1
7257.105	Cable management panel with 5 steel brackets 2U		1
5502.225	Cable management panel with plastic cable routing bars 1U		1
5502.235	Cable management compartment with cutouts 2U		1
5502.245	Cable routing channel, open top 1U		1
5502.255	Cable entry panel with brush strip opening 1U		1
5502.265	Cable entry panel with brush strip opening 2U		1
5502.120	Cable route, adjustable height 80 - 88" (2000 - 2200 mm)		1
9978.360	Cable management wall 42U (700 - 800 mm W) incl. PDU mount		1
9978.361	Cable management wall 47U (700 - 800 mm W) incl. PDU mount		1
5502.155	Nylon tape supports		10
9969.599	Quarter-turn velcro cable fastener 17" (420 mm)		10
9969.600	Quarter-turn cable collection		10
9961.780	Quarter-turn D-ring, 5 x 3.5" (127 x 88.9 mm)		10
9961.779	Quarter-turn D-ring, 3.5 x 1.75" (88.9 x 44.5 mm)		10
Cable Management (Roof Mounted)			
Part No.	Description		Packs of
9970.292	TS IT 0600W ROOF MT CABLE MGR		1
9970.293	TS IT 0700W ROOF MT CABLE MGR		1
9970.294	TS IT 0800W ROOF MT CABLE MGR		1
9970.295	TS IT 0600W ROOF MT CABLE MGR FOR LADDER		1
9970.296	TS IT 0700W ROOF MT CABLE MGR FOR LADDER		1
9970.297	TS IT 0800W ROOF MT CABLE MGR FOR LADDER		1
9970.298	TS IT END CORNER BRACKETS		1
9970.260	ROOF MOUNT CABLE MANAGER END COVERS		1
9970.270	LADDER RACK INSTALLATION BRACKETS		1
9970.271	12IN W X 10FT L LADDER RACK		1
Other Accessories			
Part No. RAL 9005	Part No. RAL 7035	Description	Packs of
9967.480	9967.483	Caster Plate Kit Front and Rear 600 W	1 Set
9967.481	9967.484	Caster Plate Kit Front and Rear 700 W	1 Set
9967.482	9967.485	Caster Plate Kit Front and Rear 800 W	1 Set
8800.490	Baying connectors, external, unpainted		6
7825.900	Corner Caster Kit		4

# Rittal – The System.

**Faster – better – everywhere.**

- TS IT Enclosures
- IT Cooling
- Monitoring & Security

## **Rittal North America LLC**

Woodfield Corporate Center  
425 North Martingale Road, Suite 400 • Schaumburg, Illinois 60173 • USA  
Phone: 937-399-0500 • Toll-free: 800-477-4000  
Email: [rittal@rittal.us](mailto:rittal@rittal.us) • Online: [www.rittal.com](http://www.rittal.com)

## **Rittal Limited**

6485 Ordan Drive • Mississauga, Ontario L5T 1X2 • Canada  
Phone: 905-795-0777 • Toll-free: 800-399-0748  
E-Mail: [marketing@rittal.ca](mailto:marketing@rittal.ca) • Online: [www.rittal.ca](http://www.rittal.ca)

## **Rittal Mexico**

Dr. Roberto Gayol 1219-1B • Col. Del Valle Sur, 03100 • Mexico, D.F.  
Phone: (+52) (55) 5559-5369 • Toll-free: 01 800 8 Rittal (748.825)  
E-Mail: [info@rittal.com.mx](mailto:info@rittal.com.mx) • Website: [www.rittal.com.mx](http://www.rittal.com.mx)

ENCLOSURES

POWER DISTRIBUTION

CLIMATE CONTROL

IT INFRASTRUCTURE

SOFTWARE & SERVICES



FRIEDHELM LOH GROUP