

Band Pilot

Cloud-based LTE Management System

Zyxel LTE Band Pilot is a cloud-based remote management system designed to help service providers remotely manage Zyxel LTE CPE products. Key features include remote troubleshooting, monitoring online status for all devices, RF performance history tracking, remote firmware upgrades, and TR-143 speed tests. These features allow an operator to provide a reliable network and better internet connection/experience for end users.



Cloud-based



Remote Management



Status Monitoring



TR143-based Diagnostic



Problem Solving



Intuitive, User-Friendly

ZYXEL LTE Band Pilot
Remote Management System

Navigation: Dashboard, Devices, Upgrade, Account

Filter: [Search] [Reset]

CPE ID: [] is is not *

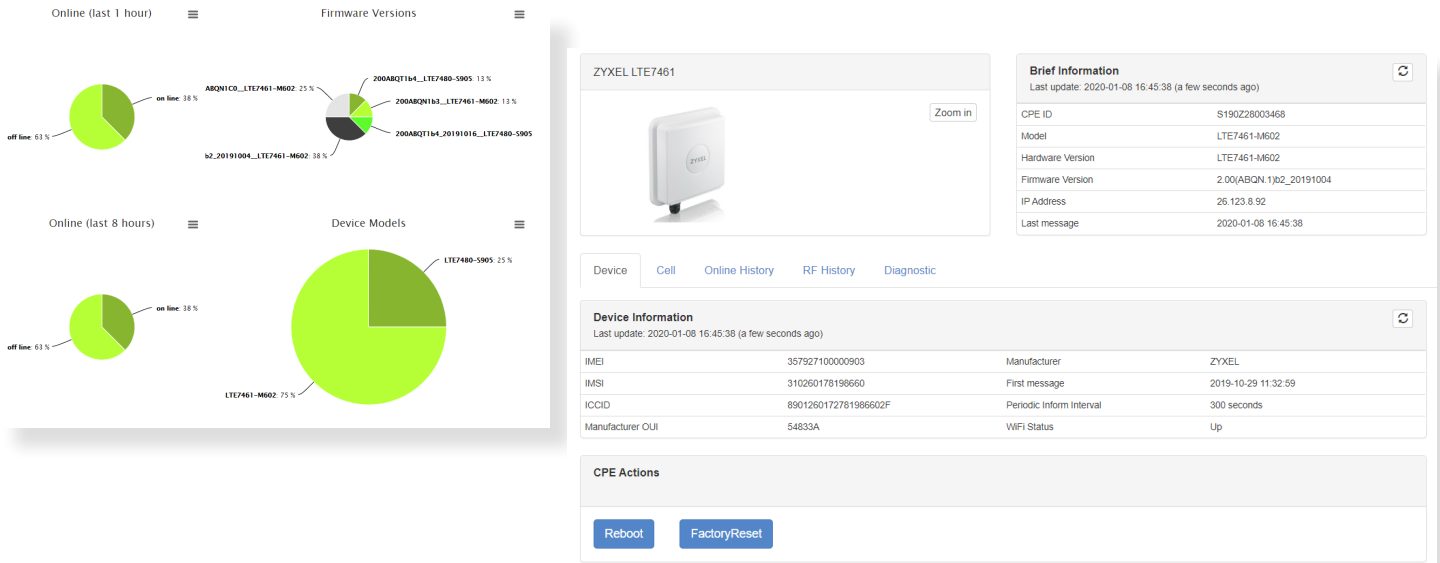
Results per page: 50

Status	Actions	Cell ID	CPE ID	IMSI	IP	Version
Offline	[trash] [refresh] [gear]	27447297	S190252004310	1010123450009	192.168.22.34	100ABRA0b3_1223__LTE7480-M804
CNR sent	[trash] [refresh] [gear]	27447297	S190251004240	1010123456789	192.168.22.38	200ABQT1b4__LTE7480-S905
Online	[trash] [refresh] [gear]	22139394	S190228003468	310260178198660	26.123.8.92	200ABQN1b2_20191004__LTE7461-M602
CNR sent	[trash] [refresh] [gear]	20802561	S190228003462	310260178198660	N/A	200ABQN1b2_20191004__LTE7461-M602
CNR sent	[trash] [refresh] [gear]	27447297	S190222002640	1010123450002	192.168.21.30	200ABQT1b4_20191016__LTE7480-S905
Offline	[trash] [refresh] [gear]	141724682	S190221001650	310410214388735	10.120.215.149	200ABQN1b2_20191004__LTE7461-M602
Online	[trash] [refresh] [gear]	5172248	S190221001649	311480474413812	100.110.38.201	200ABQN1C0__LTE7461-M602
Online	[trash] [refresh] [gear]	141724682	S190221001605	310410214388735	10.49.153.19	200ABQN1C0__LTE7461-M602
CNR sent	[trash] [refresh] [gear]	56418583	S180Y34081470	466011102125807	10.59.224.166	200ABQN1b3__LTE7461-M602

Benefits

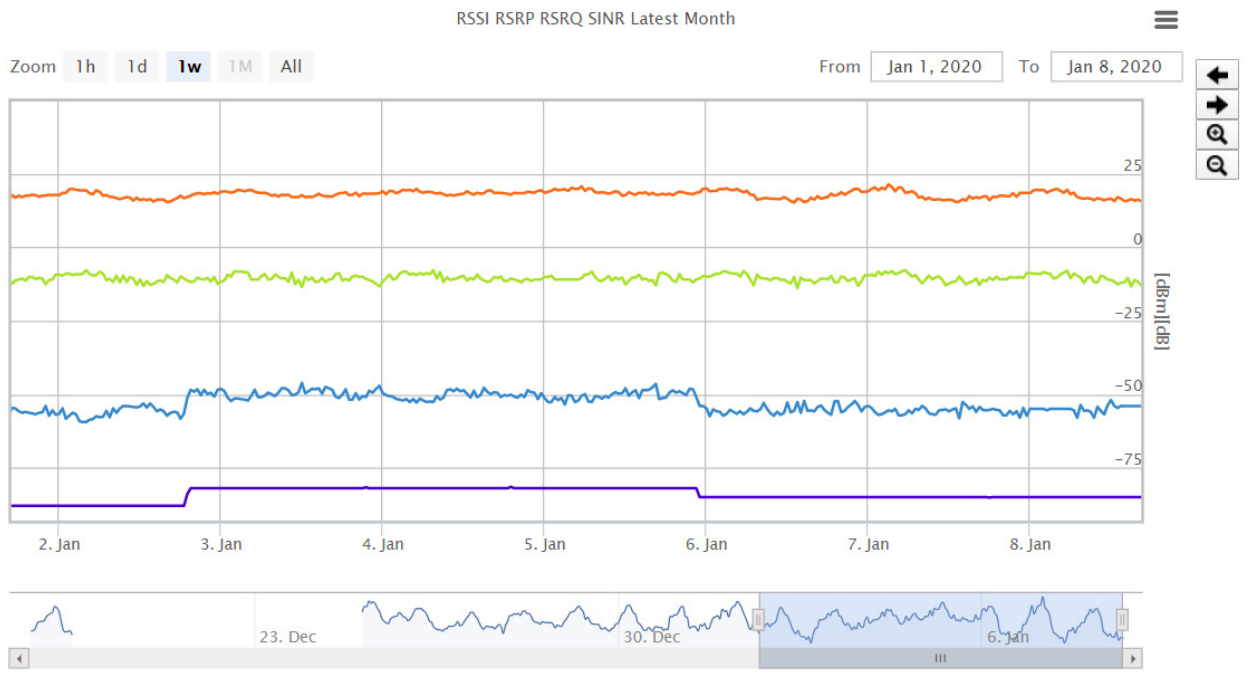
CPE Summary on Dashboard and Intuitive User Experience

The operator can find the device information summary on the dashboard quick view including online devices, models, and the Firmware version for each. For more detailed information, simply click on the CPE group in the pie chart.



Graphic RF Performance History

Provides a histogram on an hourly/daily/weekly/monthly basis for RF information such as RSRP, RSSI, RSRQ and SINR. Supports one click Zoom In and Zoom Out feature to know the detail of each period of time.



Manage Firmware Upgrade Maintenance More Easily

Allows operator to run Firmware upgrade for individual or multiple devices and manage the status of all the upgrade tasks.

Search Reset

Results per page

Status <u>↑↓</u>	Firmware ID <u>↑↓</u>	Firmware version <u>↑↓</u>	Hardware version <u>↑↓</u>	Model <u>↑↓</u>
Enabled	489170173	2.00(ABQN.1)C0	LTE7461-M602	LTE7461-M602
Enabled	489291884	2.00(ABQT.1)C0	LTE7480-S905	LTE7480-S905
Enabled	489493286	2.00(ABQT.1)b4	LTE7480-S905	LTE7480-S905
Enabled	489651012	2.00(ABQN.1)b3	LTE7461-M602	LTE7461-M602

Showing 1 – 4 of 4 entries

Results per page

Job <u>↑↓</u>	Description <u>↑↓</u>	Succeeded <u>↑↓</u>	Running <u>↑↓</u>	Failed <u>↑↓</u>
503613002	7461 C0 --> C0	1510	0	341
503706912	C0 --> C0 7480	54	0	6
508464358	b4 --> C0 7480	1514	1	70
508512665	C0 --> b4 7480	1504	1	86

Showing 1 – 4 of 4 entries

Results per page

Status <u>↑↓</u>	CPE ID <u>↑↓</u>	Job ID <u>↑↓</u>	Description <u>↑↓</u>	Start time <u>↑↓</u>	End time <u>↑↓</u>
Running	S190Z40001053	508512665	C0 --> b4 7480	2019-12-25T16:16:54+08:00	
Running	S190Z22002640	508464358	b4 --> C0 7480	2019-12-25T16:15:52+08:00	
Succeeded	S190Z40001053	508464358	b4 --> C0 7480	2019-12-25T16:14:22+08:00	2019-12-25T16:16:53+08:00
Succeeded	S190Z22002640	508512665	C0 --> b4 7480	2019-12-25T16:13:20+08:00	2019-12-25T16:15:51+08:00
Succeeded	S190Z40001053	508512665	C0 --> b4 7480	2019-12-25T16:11:52+08:00	2019-12-25T16:14:22+08:00
Succeeded	S190Z22002640	508464358	b4 --> C0 7480	2019-12-25T16:10:43+08:00	2019-12-25T16:13:19+08:00

Remotely Troubleshoot with TR143-based Speed Test, Ping, and Traceroute Diagnostic Tools

The LTE Band Pilot remote management system provides a set of tools for operators to be more efficient and responsive in helping end users. They can troubleshoot by using TR143-based download/upload speed tests and diagnostic tools such as ping, traceroute, reboot, and/or reset functions. The use of these functions shortens operators' response time to end user complaints, meanwhile, reducing the expense of dispatching technicians for onsite troubleshooting.

Download Test Upload Test Trace Route Test Ping Test

Download Test

Please enter address or choose from a list

 ▼

Run Diagnostic

Supported Models

LTE7461-M602
LTE7480-S905

For more product information, visit us on the web at www.zyxel.com

Copyright © 2020 Zyxel Communications Corp. All rights reserved. Zyxel, Zyxel logo are registered trademarks of Zyxel Communications Corp. All other brands, product names, or trademarks mentioned are the property of their respective owners. All specifications are subject to change without notice.

