



Rookery South ERF Community Liaison Panel

14th January 2019

AGENDA

1. Welcome and apologies for absence 2 mins
2. Opening remarks and acceptance of the notes from meeting of 11/06/18 10 mins
3. Brief overview of the JR outcome and the current position (**Covanta-VERBAL**) 5 mins
4. The Permit and how to address the main concerns (Environment Agency). 15 mins
5. Covanta News update (Covanta). 10 mins
6. Electricity subsidy scheme renaming and update (Covanta). 5 mins
7. Green Lane Road works closure and update – S. 278. 10 mins
8. Response to Questions:
 - i. Jennie Thomas - Update on footpaths (Covanta) 5 mins
 - ii. Jennie Thomas - Visual Design and impact mitigation (Covanta) 10 mins
 - iii. Robina Chatham - C94/former A421 HGV restriction (Roy Romans) 5 mins
9. Any Other Business. 10 mins
10. Agenda items for the next meeting. 5 mins
11. Date of next meeting. [**Monday, April 29th, 2019?**].

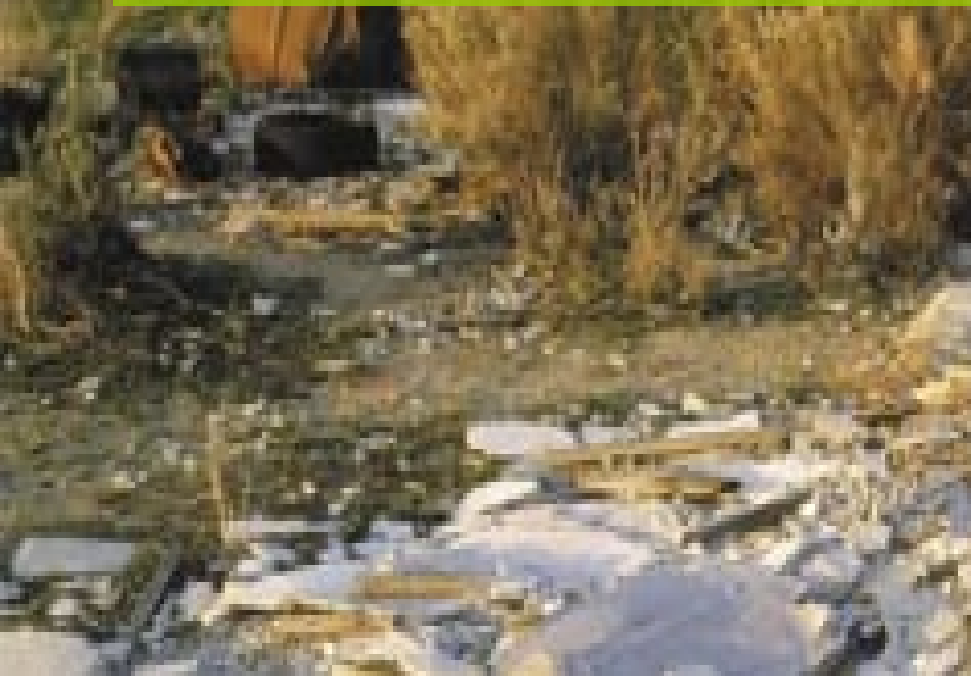
Community Liaison Meeting Rookery Pit Environment Agency

14 January 2019

Neil Goudie – Regulatory Specialist
Emma D'Avilar – Regulatory Officer



The Environment Agency is enforcing air, water and land quality improvement targets for industry.



What will a permit contain

Conditions that control:

- Emissions to air, land and water.
- Site monitoring.
- Noise.
- Odour.
- Dust.
- Waste Processing.
- Accident prevention.
- Types of waste.
- Management of incoming & outgoing waste.
- Energy efficiency.

How will the environmental permit protect air, land and water ?

Air

- The permit has emission limits, these are continuously measured (24hrs) and reported to us.
- The incineration process has requirements that the operator has to comply– 850degree temperatures in the furnace to ensure the waste gases meet safe emission limit values.
- Schedule 5 Notifications to the EA within 24hrs if the emission limits are breached.

Land

The Permit states there will be no point source emissions to land air or water. Except those listed in schedule 3, i.e. the stack

There are no emissions to land within the permit

Water

The Permit states there will be no point source emissions to land air or water. Except those listed in schedule 3, i.e. the stack, the ash,

There are no direct emissions to allow releases to water.

Schedule 5 Notifications

- Any potential pollution events must be formally notified to the Environment Agency.
- An Emission Limit Value breach is the main reason for reporting.
- Plant failure, or testing, which could result in 3rd party impact can also be reported.
- Assessment will take into account foreseeability; historical compliance and operator mitigation.

EA regulation, what does it look like?

Rookery pit has 11 pre-operational that need to be completed. Before the site operates they must have the preoperational conditions met and signed off.

Once operational the site enters into commissioning.

This is a period of operations where design and plant are tested to verify its functions.

This is followed by a number of improvement conditions

Commissioning & Enforcement

- Permit compliance will commence at the beginning of commissioning following the production of a commissioning programme as part of a pre-operational condition.
- Announced and unannounced inspections will occur throughout commissioning.
- Assessment of non-compliances and any enforcement response will be explained at the Panel which we will continue to regularly attend.

Our Role will be to:-

- To check permit conditions are being met;
- To audit the results of monitoring submitted by the operator;
- To respond to incidents and complaints;
- To carry out investigations;
- To provide advice and guidance;
- To check progress against an agreed improvement programme or action plan.

Compliance & Enforcement

- Compliance Assessment – Using our Common Classification Scheme (CCS).
- Enforcement – Using Enforcement & Civil Sanctions Guidance with Offence Response.
 - Operator Performance Benchmarking
 - Enforcement Moderation

INDUSTRY REGULATION USEFUL LINKS

➤ EPR

<https://www.gov.uk/topic/environmental-management/environmental-permits>

➤ Best Available Techniques (BAT)

<https://www.gov.uk/guidance/best-available-techniques-environmental-permits>

➤ Rookery Pit - Decision Document and Final Permit

<https://www.gov.uk/government/publications/mk43-9ly-covanta-energy-limited-environmental-permit-issued>

Item 6 Rookery South Community Energy Initiative

- Renamed: formerly Electricity Subsidy Scheme
- Enhanced:
 - Qualifying date extended to 31st December 2018
 - Additional month added to Registration Period
- Launch:
 - GrantScape webpage with FAQs activated (January 2019)
 - Residents' letters/Registrations open (late February 2019)
 - Registration online/by post or in person
 - Drop-in evening registration events (March-May 2019)
 - Registrations close (late June 2019)

Rookery South Community Energy Initiative

<http://www.grantscape.org.uk/>

<http://www.grantscape.org.uk/fund/rscei/>

Rookery South Community Energy Initiative

The screenshot shows a web browser window with the address bar displaying www.grantscape.org.uk/fund/rscei/. The browser's address bar also shows "Not secure". The browser's toolbar includes buttons for back, forward, home, and search, as well as a search bar. The browser's bookmarks bar shows several links: "Bookmarks", "Dashboard | Strava", "Home - Waste and Re", "Natural Resources W", "Solihull Cycling Club", "LinkedIn", "Facebook (3)", "BBC Weather", "My Drive - Google Dr", and "Other bookmarks".

The website itself has a blue header with the "GrantScape" logo and a navigation menu with links: "Home", "About Us", "Contact Us", "Our Staff", and "Our Trustees". Below the header, there is a section titled "Rookery South Community Energy Initiative". The main content area contains several paragraphs of text, a "Contact Us" section, and a footer with links to "The Charity", "Our Services", and "Legal".

GrantScape

Continue your application

Home About Us Contact Us Our Staff Our Trustees

Closing Dates Grant Finder Our Impact - 2018 Our Services Our Clients News Testimonials Jobs

Rookery South Community Energy Initiative

Covanta Energy's Rookery South Energy Recovery Facility (ERF) at Rookery South Pit, a former brick clay extraction pit, is being developed near Stewartby in Bedfordshire. The ERF is a sustainable alternative to landfill, using household, commercial and non-hazardous industrial residual waste, left after recycling and composting efforts, as fuel to generate clean electricity. The facility will provide a vital outlet for the sustainable disposal of over 500,000 tonnes of residual waste per year and will generate over 60 megawatts of low carbon energy - enough electricity to meet the needs of 75,000 homes.

The Rookery South Community Energy Initiative (RSCEI) is a 35 year financial commitment by Covanta to specified householders, subject to their current and future eligibility, starting at commercial operation of the ERF (expected in early 2022).

Covanta is unable to supply electricity directly to neighbouring communities; however Covanta has committed to contribute £60 per household, per year, through the RSCEI towards the electricity costs of households in qualifying parishes, payable from the first year of operation, and index linked for the following years.

Covanta has appointed GrantScape Services Ltd to manage the Community Energy Initiative on its behalf.

Residents of households (as at **31 December 2018**) in the parishes of Brogborough, Cranfield, Houghton Conquest, Lidlington, Marston Moretaine, Millbrook, Stewartby and Wootton will be invited to register for the RSCEI.

Registration Forms will be posted to eligible households by the end of February 2019, and will be available online. Registration Forms must be submitted by **28 June 2019**.

More information about eligibility and how you can register, will be published here soon.

Contact Us

GrantScape Services Ltd
Office E, Whitsundoles
Broughton Road
Salford
Milton Keynes
MK17 8BU

T: 01908 247639
E: rscei@grantscape.org.uk

The Charity

Contact Us
Home
About Us
Our Trustees

Our Services

Grant Management
Consultancy and Support

Legal

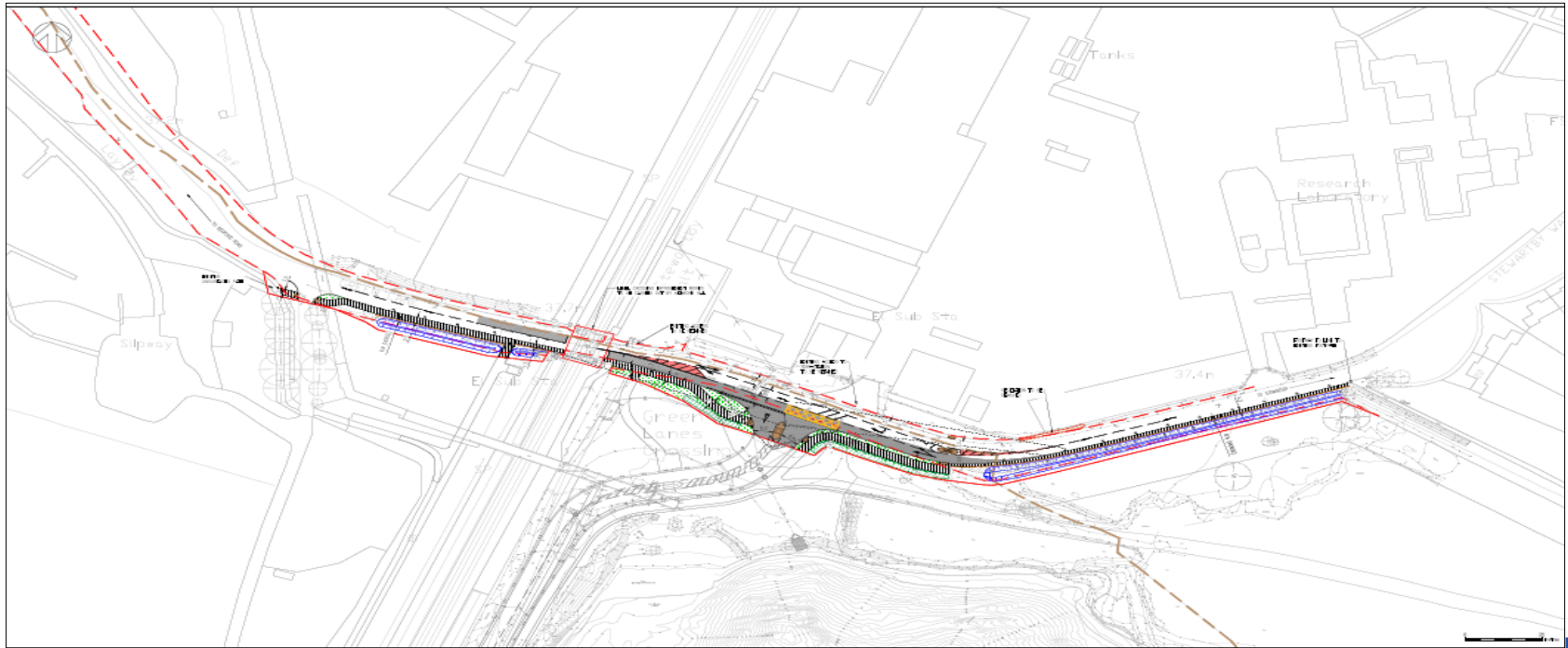
Legal Information
GrantScape Privacy and Cookies Policy
Complaints Procedure

GrantScape
ADEB
Member

Item 7 Green Lane Road works closure and update - s. 278. works

The S278 works (improvement of the Green Lane / Access road junction) include:

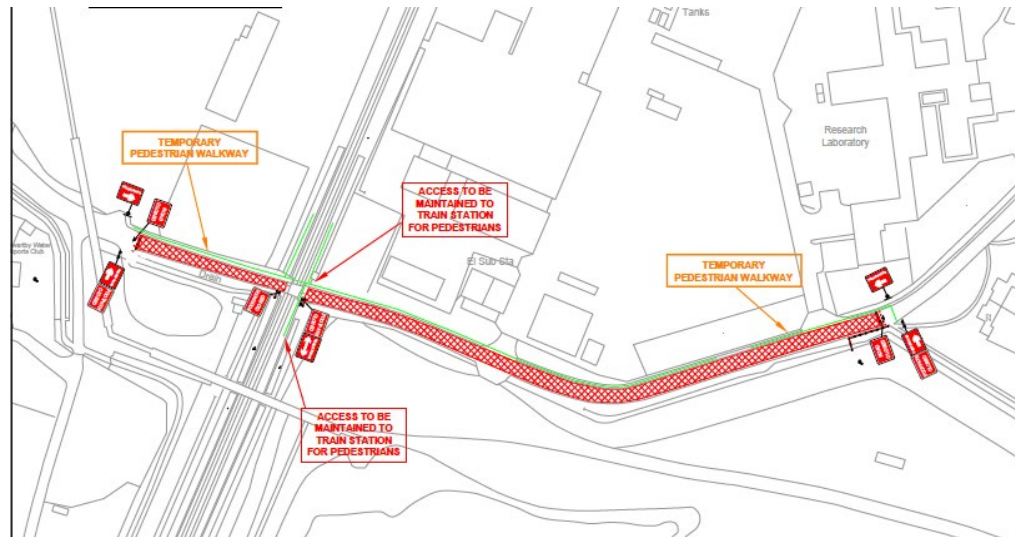
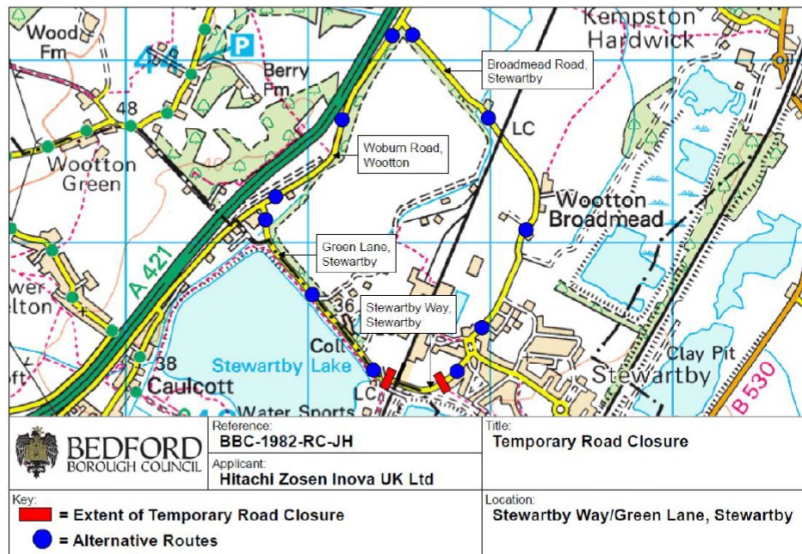
- Widening of current access off Green Lane and a ghost island for right-turn traffic
- Installation of new street lighting
- Installation of new pedestrian footpaths and crossing points
- Reformation and improvement of drainage channel
- Temporary closure of Green Lane between Stewartby Way and entrance to Sailing Club for a period of 6 weeks



Current Site activities: S278 works

Programme:

- Works started on the 7th January 2019 and are expected to be completed on the 17th February 2019
- Temporary road closure is anticipated to be in operation 24 hours a day from Monday 7th January 2019 to Sunday 17th February 2019 inclusive
- Letter drop to local residents was done on the 19th of December 2018 informing of the road closure and providing contact details
- Pedestrian access along Green Lane has been maintained and temporary street lighting installed for the safety of pedestrians



© Crown copyright and database rights 2018 Ordnance Survey 100049028. You are not permitted to copy, re-use, license, distribute or sell any of this data to third parties in any form.

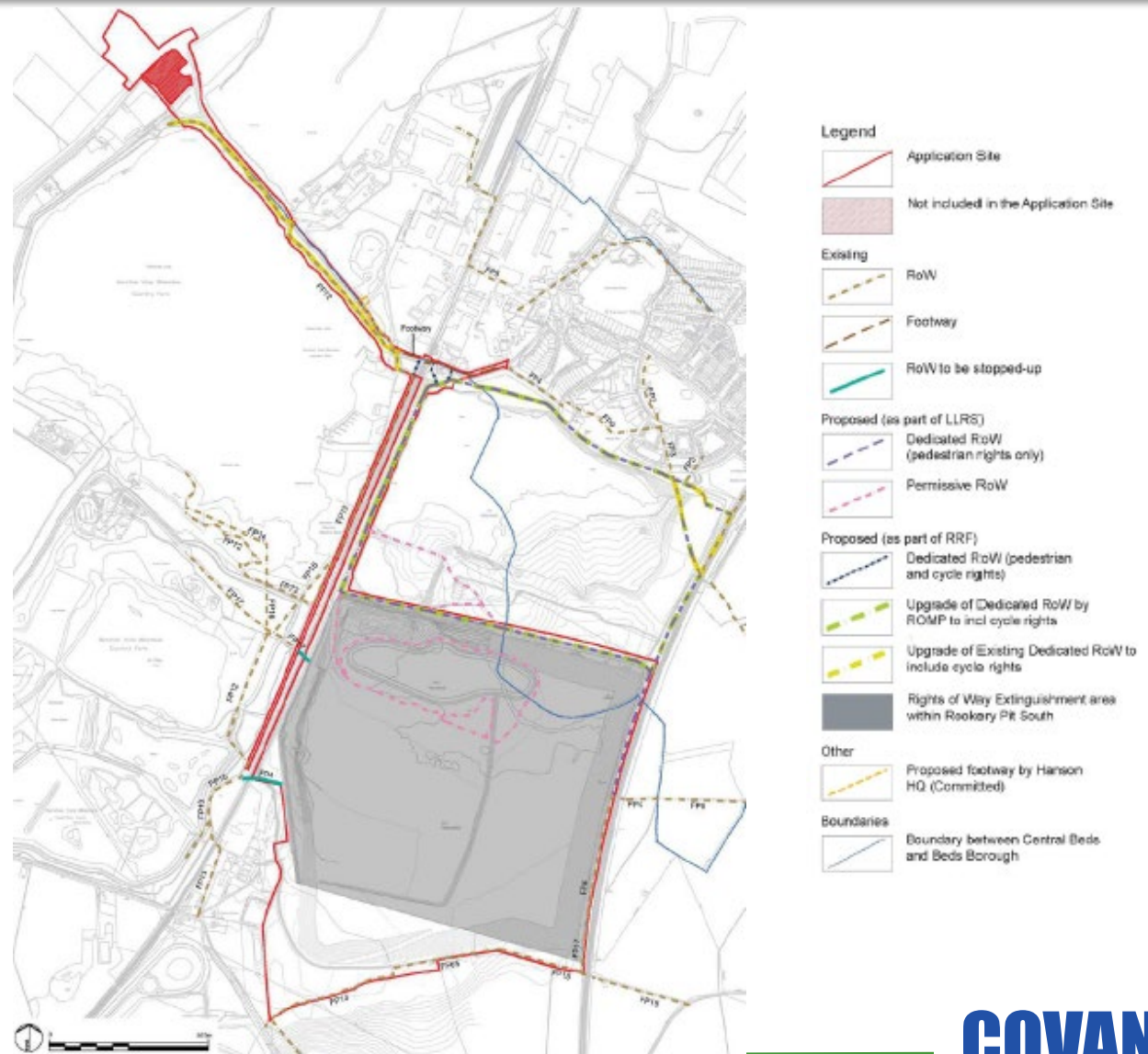
Item 8 Response to Questions

- i. Update on footpaths (Covanta)
 - Request for more information on footpaths/cycle paths to be created/reinstated in the pit.
- ii. Visual Design and impact mitigation (Covanta)
 - Request for more detail of what the plant will look like, including
 - the "green wall" facing the forest centre
 - how the visual impact from Houghton House or Ampthill Park will be mitigated.
- iii. C94/former A421 HGV restriction – VERBAL (CBC)
 - Request to clarify the status of the old A421 (now C94) and when it will become a lorry free road as there are no signs to say that it is as yet

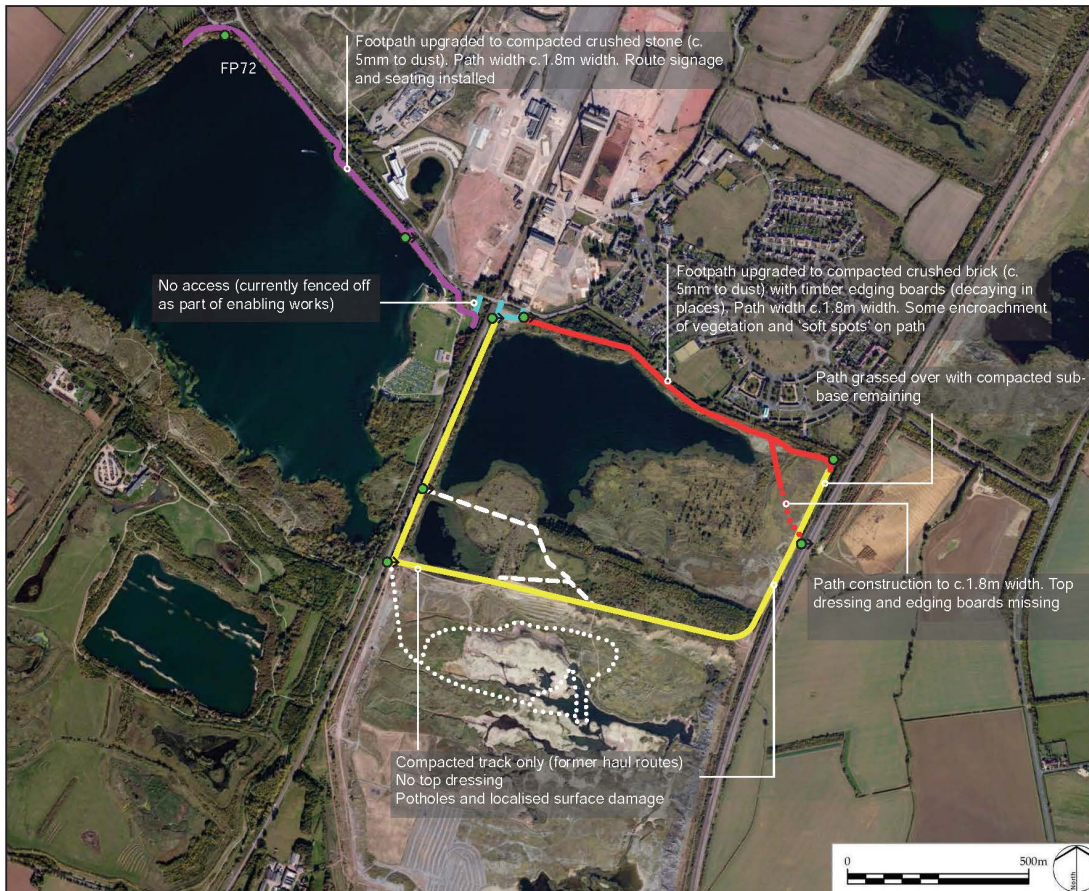
(i) Rights of Way Strategy Outline

1. The Development will establish a comprehensive upgrading of the existing and approved rights of way network across Rookery North Pit and Rookery South Pit provided under the low level restoration scheme ("LLRS").
2. New rights of way links will also be established, connecting existing rights of way and footways to the east and west of The Rookery Pits as shown on the Rights of Way Strategy Plan. These comprise:
 - 3.1.1 upgrading the dedicated circular footpath around Rookery North Pit established under the LLRS to include dedicated cycle rights;
 - 3.1.2 upgrading the dedicated footpath that crosses the north-east corner of Rookery North Pit to include dedicated cycle rights;
 - 3.1.3 two new dedicated footpaths with cycle rights between the circular footpath around Rookery North Pit and the Green Lane within the vicinity of Green Lane junction;
 - 3.1.4 a new dedicated footpath between Green Lane and the circular path around the edge of Stewartby Lake (FP72), improving access to the Millennium Country Park from Green Lane and Stewartby railway station; and
 - 3.1.5 a new footway provided along Green Lane, enhancing connectivity between Stewartby, Stewartby Station and the Marston Vale Millennium Country Park.

Rights of Way Strategy - Plan



Rights of Way Strategy – Status @ May 2017



LD&A DESIGN

Routes which are subject to S106 obligations

- Footpath upgraded to cycle standards (sound condition)
- Footpath upgraded to cycle standards - areas of damage/ neglect
- Footpath upgrades to cycle standards ongoing
- Route defined - does not meet cycle standards
- No defined footpath/ cyclepath

Routes which are subject to LLRS works ONLY

- LLRS scheme only (no requirement to upgrade as part of Rookery S106) - works complete
- LLRS scheme only (no requirement to upgrade as part of Rookery S106) - works incomplete

Signage

- Directional signage (finger post) installed

PROJECT TITLE
ROOKERY SOUTH RRF

DRAWING TITLE
Rights of Way Strategy - S106 Obligations
Footpath Audit

ISSUED BY Oxford t: 01865 887050
DATE May 2017 DRAWN SR
PAGE SIZE 420mm x 297mm CHECKED SR
STATUS Draft APPROVED AK

DWG. NO. 5105_SK002

© LDA Design Consulting Ltd. Quality Assured to BS EN ISO 9001:2008

(ii) Visual Design and impact mitigation - Environmental Statement

Chapter 8 Landscape & Visual Impact

- 17 representative visual receptors were identified - short, middle or long distance views.
- In middle to long distance views, the Project will be less apparent, set within the wide panorama of Marston Vale, which includes urban areas, industrial land-uses, transport infrastructure, and other tall structures such as pylons and the Stewartby chimneys.
- Seven of the representative visual receptors were agreed as appropriate photomontage locations through consultation with English Heritage, Central Bedfordshire Council and Bedford Borough Council
- Mitigation of impacts on the landscape character and representative visual receptors has been addressed from an early stage in the design of the Project. Aspects of the design, including choice of stack, massing and height of the main buildings (i.e. stepped effect) and selection of material finishes have been developed in consultation with English Heritage, Central Bedfordshire Council and Bedford Borough Council with the aim of minimising adverse impacts.

Design & Access Statement 1

Design and Access Statement

- A design and access (DAS) statement is a short report accompanying and supporting a planning application.
- A DAS must explain the design principles and concepts that have been applied to the development. It must also demonstrate how the proposed development's context has influenced the design.

Design Development

Consultees that have particularly influenced the design of the Project include the following:

- English Heritage (EH);
- Central Bedfordshire Council (CBC);
- Bedford Borough Council (BBC);
- The Marston Vale Trust;
- The Commission for Architecture and the Built Environment (CABE);
- The Community Liaison Panel (CLP) established by Covanta;
- Network Rail; and
- The Environment Agency (EA)

Design & Access Statement 4



The box form compared with curved profile resulted in a less bulky building

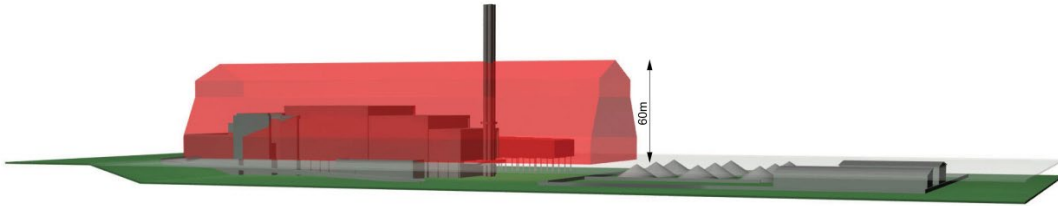
- less dominant roof profile
- reduction in the overall height and volume of the building
- articulated building which produced shadow providing opportunities to develop a more 'recessive' building



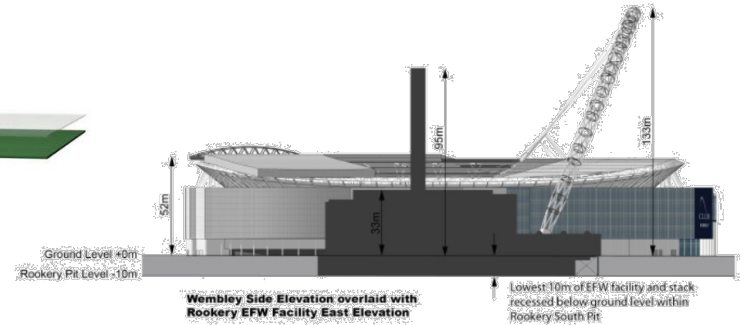
Source: Rookery South Energy Recovery Facility – Development Consent Order, Design & Access Statement (p.88)

Design & Access Statement 5

Comparisons



Cardington Hangars



Wembley Stadium



Source: Rookery South Energy Recovery Facility – Development Consent Order, Design & Access Statement (p. 95)

Design & Access Statement 2

Mitigation

- The arrangement of the RRF along an east-west axis places the narrowest elevation within view of the nearest and most sensitive receptors - the Forest Centre within the Millennium Country Park to the west, and Houghton House to the east
- Colour studies were undertaken early in the design process to inform choice of cladding materials and colour selection. The studies helped to identify the dominant colour characteristics within three types of view: long range, mid-range and short range.
 - **Long Distance Views** - The colours seen in long range views are affected by the atmospheric conditions. The significant hue is **blue**, which causes elements to recede within in the landscape.
 - **Mid Range Views** - The dominant colours seen in mid-range views are those of the existing geology, such as the exposed clay workings, and the existing chimneys at Stewartby Brickworks.
 - **Short Range Views** - The landscape elements adjacent to the proposed ERF create a more vivid colour palette. Computer modelling was used to refine the colour palette. During consultation with CBC, BBC, EH and CABE the issue of colour and finish was raised and has formed an important part of the design development

Design & Access Statement 3



View from Houghton House



View from the Forest Centre

Source: Rookery South Energy Recovery Facility – Development Consent Order, Design & Access Statement (p.81)

Design & Access Statement 6



1. To the north the building addresses its approach and the proposed rights of way network with the front face of the building and offices overlooking the attenuation pond and the process expressed in the long section with visible tipping bunker (incoming) and turbine hall (outgoing) elements.



2. To the east and south, the building envelope has no openings apart from east-facing louvred areas, removing an appreciation of identifiable human scale in more distant views. The building massing, shadow and colours combine to minimise the visual impact and assist in integration.

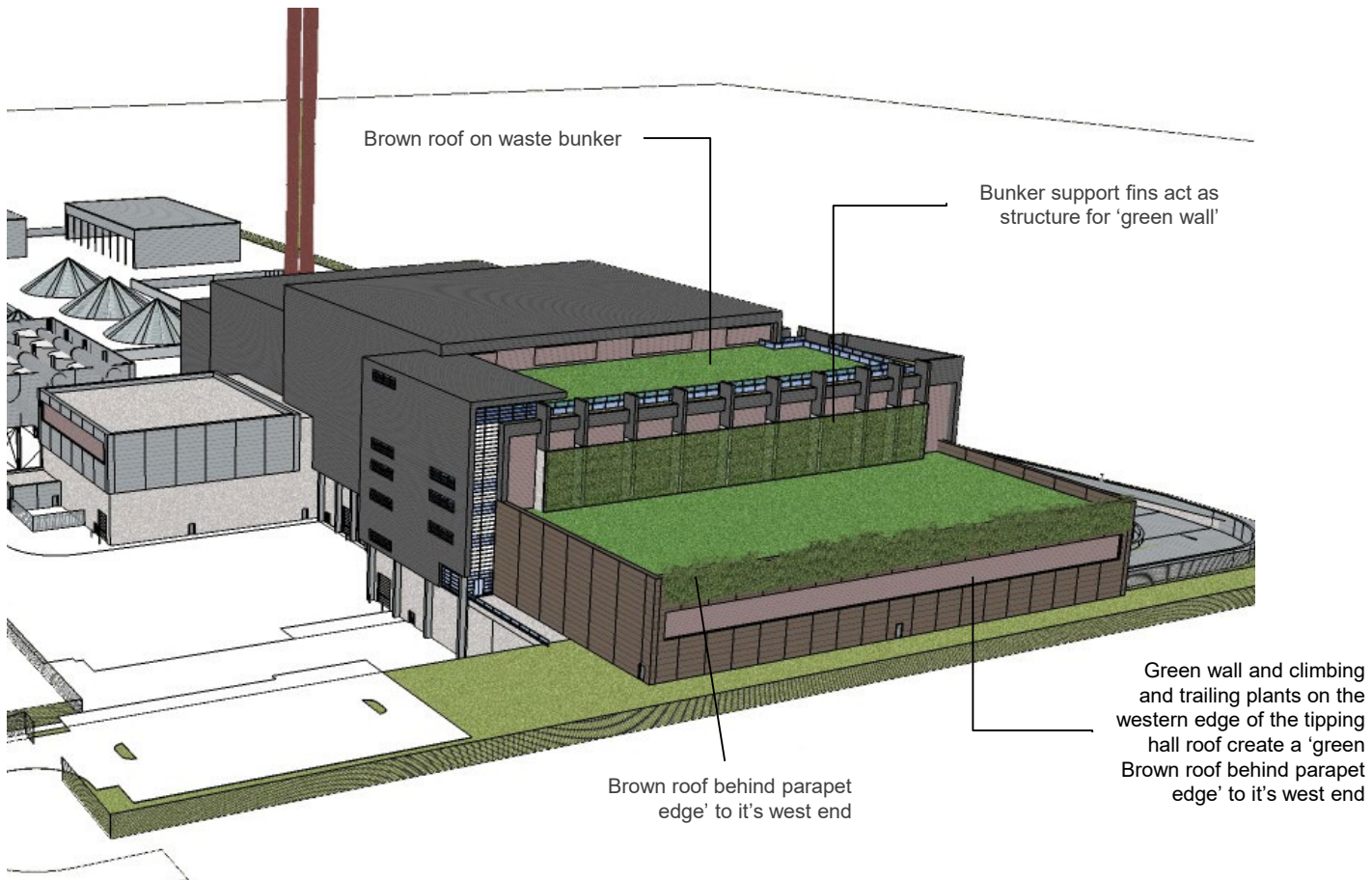


3. To the west, the design of the tipping hall roof and the expression of the rooftop visitor centre, establishes a visual dialogue with the Forest Centre. The skyline profile of the building is deliberately stepped reducing its mass and the green wall provides a means of integrating the building in views. It also 'sends messages' about the responsive nature of the building to its setting and environment at large.

Source: Rookery South Energy Recovery Facility – Development Consent Order, Design & Access Statement (p.105)

Design & Access Statement 7

West Elevation showing Green and Brown walls



Source: Rookery South Energy Recovery Facility – Development Consent Order, Design & Access Statement (p.107)

Design & Access Statement 8

Screening Impact of Vegetation

- 7.5.15 The effectiveness of the landscape proposals and strategy in mitigating visual effects has been rigorously tested through section analysis, wire line modelling and zone of theoretical visibility testing. This has used a complex 3D model of the area and photomontage production.
- 7.5.16 The following Photomontages illustrate the anticipated effects of screening from key locations and the impact that this is likely to have over a 10 year period as new and existing planting matures.
- 7.5.17 Where existing planting will continue to grow and affect visibility between the time of publication of this report and the ES in 2010 and the opening of the RRF in 2014 the planting at year one has been illustrated as having grown in accordance with anticipated growth rates. This matter is relevant to the views from Stewarby and Forest of Marston Vale where there is extensive maturing woodland within the view and to a lesser extent in the elevated views from Amphill and Amphill Park where the existing copse on the south east corner of the site provides screening to the MRF.



View from Stewarby: Planting at Year 10



View from Marston Vale Millennium Country Park: Planting at Year 10



View from Amphill Park: Planting at Year 10

Source: Rookery South Energy Recovery Facility – Development Consent Order, Design & Access Statement (p.136)

Design & Access Statement 9

Further details on the Rookery South Energy Recovery Facility, including the Design & Access Statement which formed part of the Development Consent Order application from August 2010 are publicly available and can be viewed on the Rookery South Website.



Thank You