

ROOKERY SOUTH NEWS

MARCH 2018

Environment Agency Issues Permit for Rookery South

Following a detailed review process that took into account all relevant considerations and public representations, the Environment Agency (EA) has granted an environmental permit to operate the Rookery South Energy Recovery Facility (ERF) near Stewartby.

The Rookery South ERF has been designed in a way that emissions released from the stack will be well within the strict requirements of British and EU legislation. In their decision document, the EA concluded that the permit will ensure that a high level of protection is provided for the environment and human health. All energy recovery facilities in the UK are tightly regulated and have to operate within the EU's requirements as set out in the Industrial Emissions Directive. The Environment Agency will also have complete, unannounced access to the site to ensure that the emissions treatment and monitoring equipment is operating correctly.

Additionally, the EA reviewed every public consultation response and explained how they considered the individual issues raised in their decision documentation. The decision document is accessible on the EA's website or in paper copy upon request.

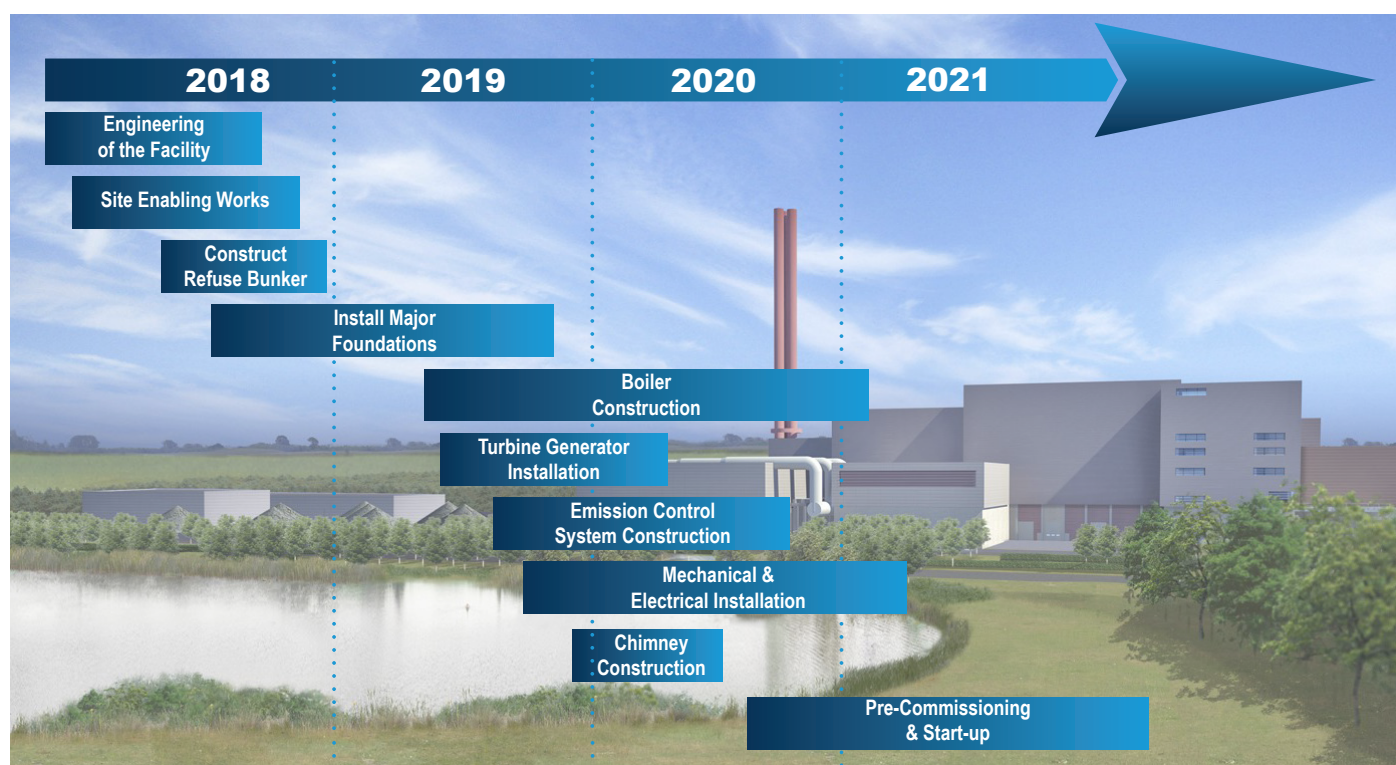


The permit granted and the EA's Decision Document can be found at:

<https://www.gov.uk/government/publications/mk43-9ly-covanta-energy-limited-environmental-permit-issued>

Alternatively, should you wish to receive paper copies of these documents or any other Public Register information on the application, please contact the EA's Customers & Engagement Team on 02030 255472 or by e-mail: enquiries_eastanglia@environmentagency.gov.uk.

Construction Timeline

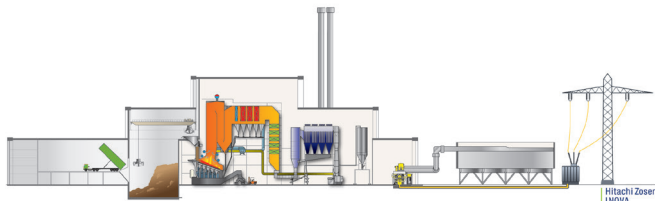


For further information or to contact us, visit: rookerysouth.co.uk

COVANTA
Powering Today. Protecting Tomorrow.

How Energy-from-Waste Works

Energy-from-Waste facilities take non-hazardous waste – otherwise destined for landfill – and combust it in specially-designed boilers to generate steam which drives a turbine for electricity generation. Ash is processed to recover metal for recycling while all gases are collected, filtered and cleaned before being released safely into the atmosphere. Learn more about the process at rookerysouth.co.uk.



Benefiting the Local Economy

The Rookery South Energy Recovery Facility will create more than **300 direct and indirect jobs** during construction and **40-50 permanent jobs** when the facility comes online in 2021.

Covanta has already received many queries relating to employment at the facility. Career opportunities will be posted to the project website as they become available.

Site Preparation and Access Road Work Begins

In 2017, restoration works were carried out at the Rookery South site in connection with the development of the ERF. In January, construction works for the access road off Green Lane close to Stewartby Station began, following the completion of all pre-construction requirements and the receipt of approval from the planning authority.

It is anticipated that the internal road construction works will be completed in mid-March, and are to be followed by construction of the junction onto Green Lane with accompanying road improvements up to the rail crossing.



Green Lane Level Crossing Safety Upgrade

With the single barrier level crossing next to Stewartby Station no longer meeting the latest safety standards, the Rookery South project plans to fund an upgrade to a modern, double barrier system. In addition to safer barriers, the new system will include security cameras managed from Ridgmont control centre. The new crossing is scheduled to be installed by Network Rail over two weekends in May 2019. During the installation, traffic will be diverted via Broadmead Road.



Current Stewartby Level Crossing



Example of New Level Crossing

Contributions to the Local Community

The development of the Rookery South Energy Recovery Facility will bring a range of local community, employment, infrastructure and environmental benefits to the local area. During the planning process, several ways to contribute to the local community were identified.

These include the development of a Community Trust Fund and a dedicated 'Woodland Creation Fund' to provide for both on-site and off-site plantings by the Forest of Marston Vale Trust under the forest plan. The Rookery South team has also committed to funding planting to enhance the entrance and amenity value of the Millennium Country Park and to improve views via a scheme agreed with the Marston Vale Trust.

Additionally, the Rookery South project will provide a subsidy for local residents to reduce their electricity bills through an electricity subsidy scheme, paying a contribution worth 10% of the average electricity bill. This will be administered by a local organisation, GrantScape. Be on the lookout for more information on this scheme in the coming months.



Contact Us

Should you have any questions, please contact the Rookery South team via the project website at rookerysouth.co.uk. Should you have any particular issues or concerns relating to the construction works on a day-to-day basis, please contact the Central Bedfordshire Council on [0300 300 8307](tel:03003008307) or email MWApplications@centralbedfordshire.gov.uk as they work closely with the project team to address any issues that may arise.

For further information or to contact us, visit: rookerysouth.co.uk

COVANTA
Powering Today. Protecting Tomorrow.