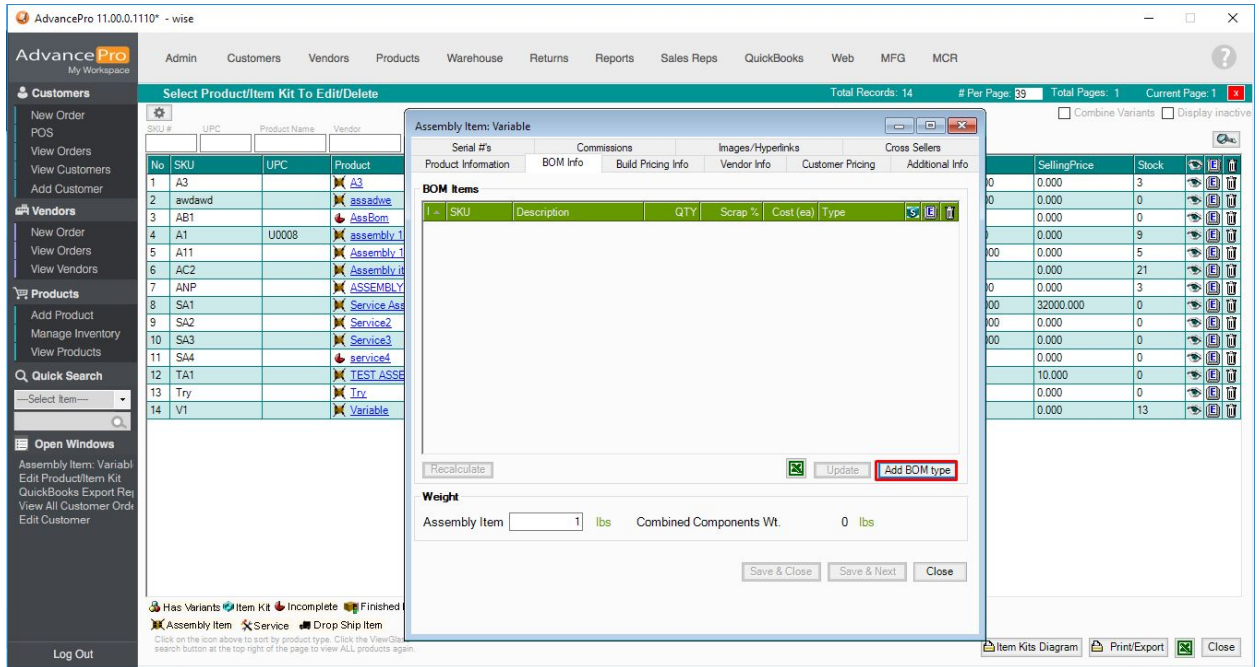
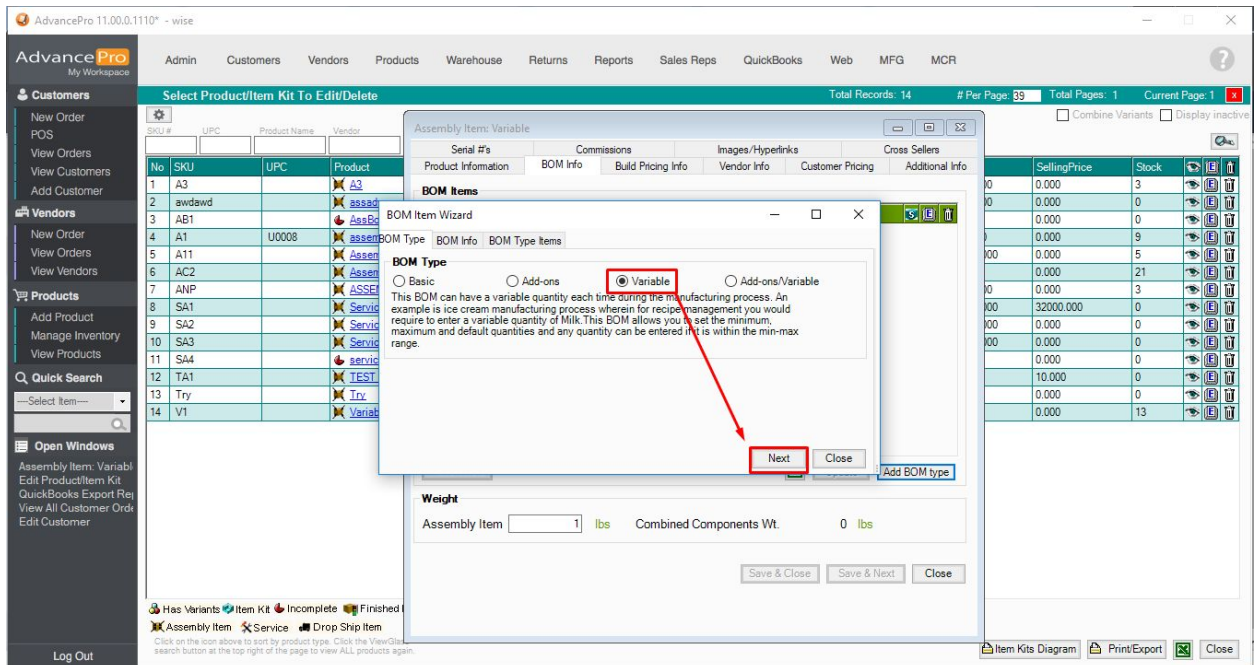


Using Variable BOM

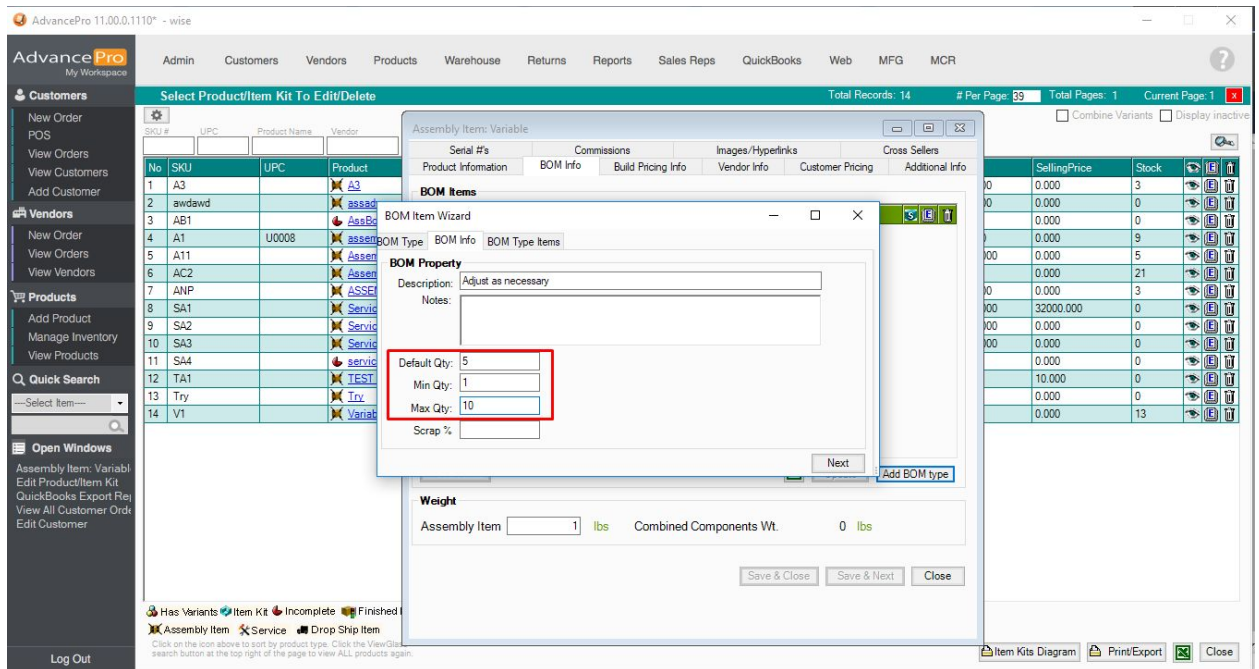
1. When creating the Assembly, you will be able to put in the BOMs or components. Select ADD BOM



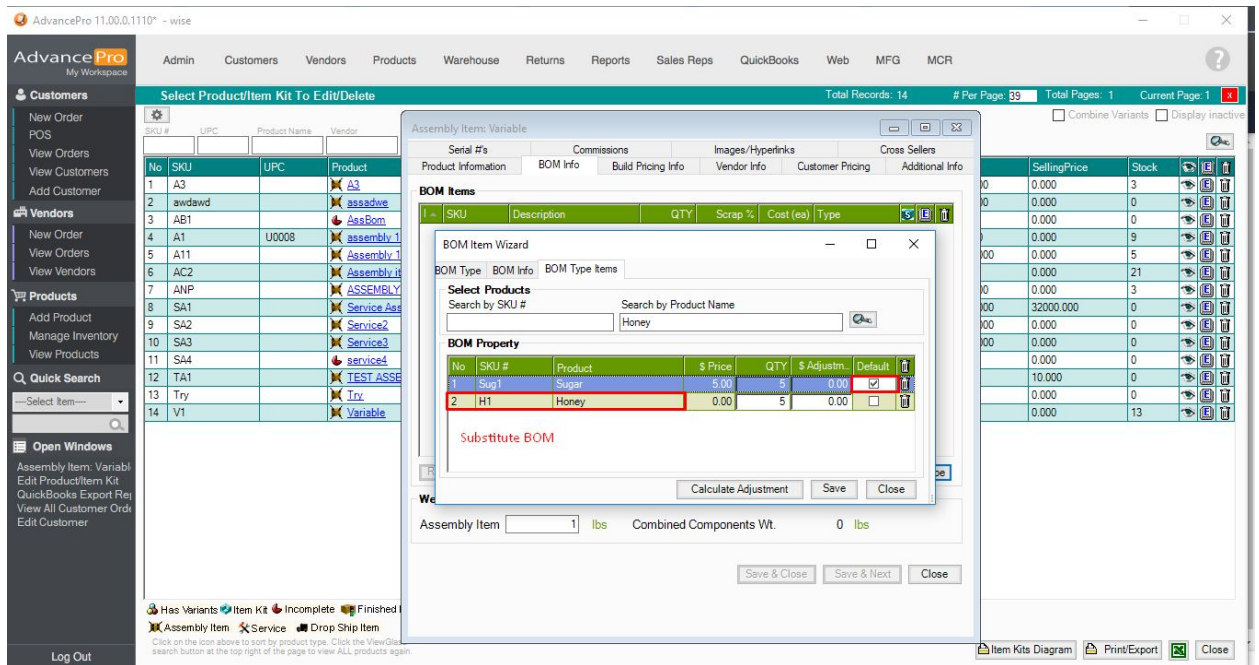
2. Select Variable type



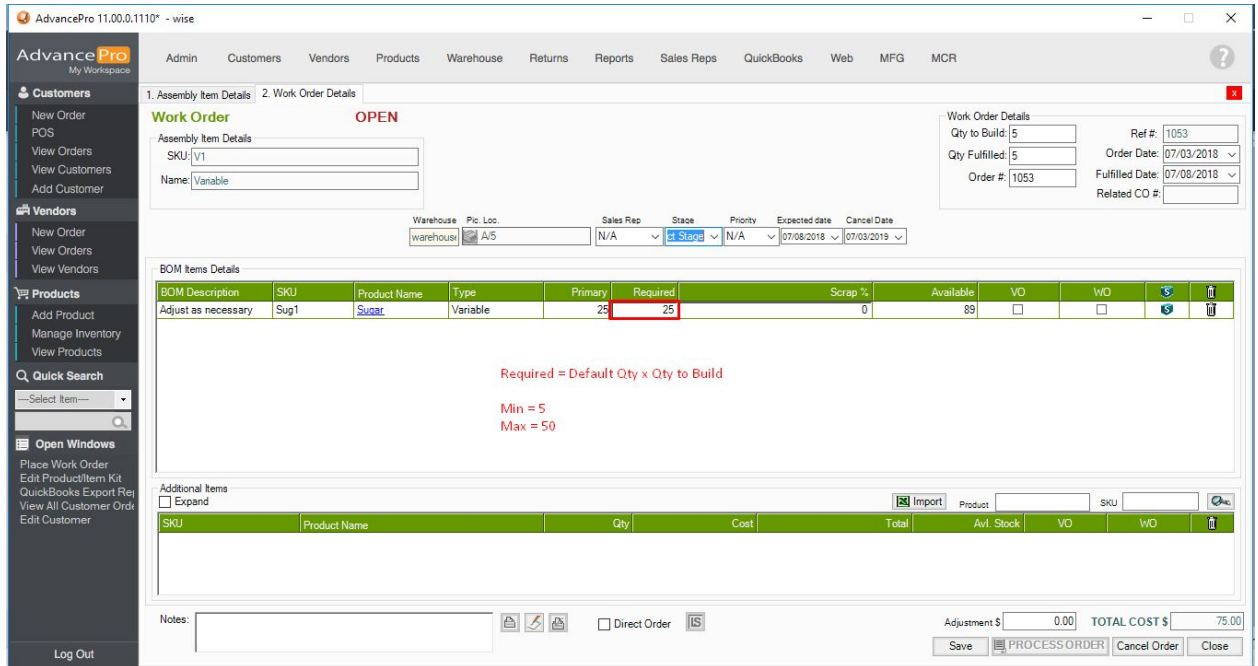
- Enter the description, Default qty, and the minimum and maximum qty that can be used for the assembly



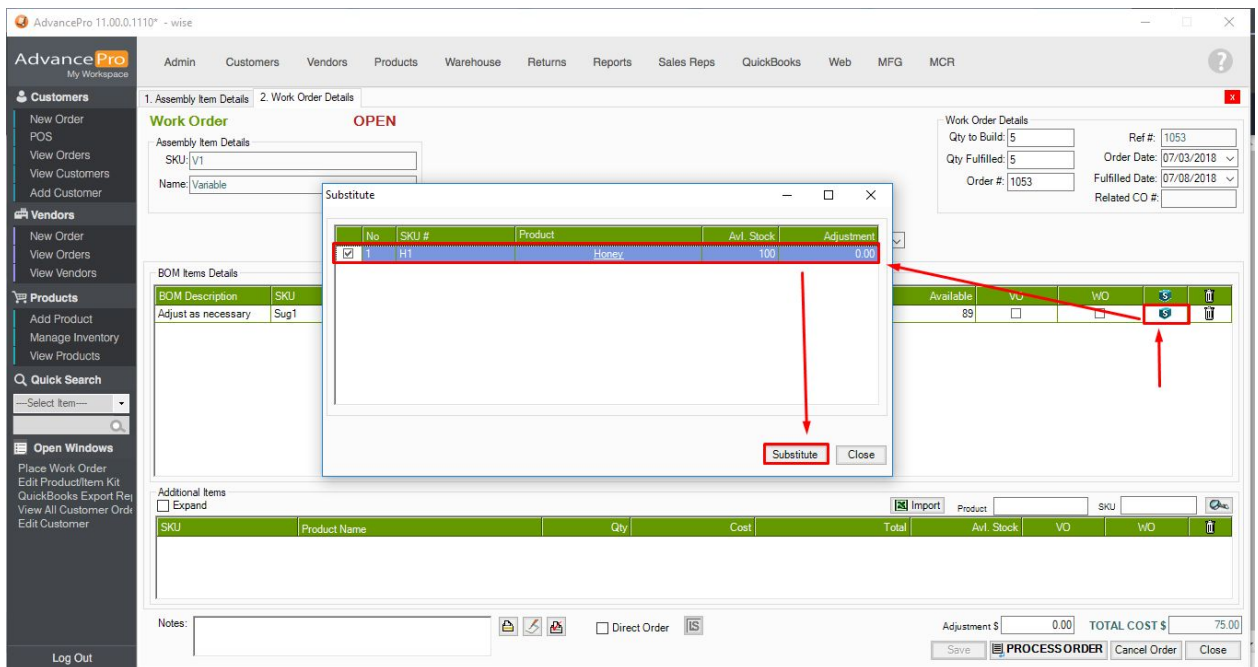
- Select the product to be used. In this example, 2 products have been selected. First is the default product. Second is the substitute product in case the default is not available or possible special requirement.



- On creating a Work Order, the default product will be added to the WO. In this case the required qty is 25 since the default qty is 5 and the qty to build is 5 ($5 \times 5 = 25$). This can however be changed to qty between 5 and 50 as min qty is 1 and max is 10 ($1 \times 5 = 5$, $10 \times 5 = 50$)



- To use the substitute product. Click on the SUBSTITUTE ICON, select the product and substitute.



7. This will replace the default product with the substitute product.

AdvancePro 11.00.0.1110* - wise

Admin Customers Vendors Products Warehouse Returns Reports Sales Repts QuickBooks Web MFG MCR

1. Assembly Item Details 2. Work Order Details

Work Order OPEN

Assembly Item Details
 SKU: V1
 Name: Variable

Work Order Details
 Qty to Build: 5 Ref #: 1053
 Qty Fulfilled: 5 Order Date: 07/03/2018
 Order #: 1053 Fulfilled Date: 07/08/2018
 Related CO #:

Warehouse: warehouse Pic. Loc: A5 Sales Rep: N/A Stage: Select S Priority: N/A Expected date: 07/08/2018 Cancel Date: 07/03/2019

BOM Items Details

BOM Description	SKU	Product Name	Type	Primary	Required	Scrap %	Available	VO	WO		
adjust as necessary	H1	Hoop	variable	25	25	0	100	<input type="checkbox"/>	<input type="checkbox"/>		

Additional Items
 Expand Import Product: SKU:

SKU	Product Name	Qty	Cost	Total	Avl. Stock	VO	WO	

Notes:

Adjustment \$ 0.00 TOTAL COST \$ 0.00

Log Out