

F A L L 2 0 1 7

# C O L O R R E P O R T

*...inspired by the fall pantone report*



Sarah K Carpenter | GATHER Events | Gather Design Company



this look is inspired by...

17-1558  
GRENADINE



## GRENADINE

Attention-grabbing and evocative, this shade commands the room. Pair with varied tones of pinks, reds, and greens to bring the look to new heights.



Garnet Isla



Azalea Shantung



Poppy Bravado



this look is inspired by...

19-1725  
TAWNY  
PORT



## TAWNY PORT

Rich and worldly, a ruddy rose-brown is ideal for a cool fall evening. Sparkling sequins, delicate pinks, and warm gold tones work perfectly with this deep color.



Wine Velvet



Rouge Ezra



Rosewood Faille





## BALLET SLIPPER

Universally flattering, and an event favorite, Ballet Slipper is exquisite. Use mysterious shades of plum and dark rose to add a sophisticated touch; whites and ivories are classic and always stunning.



Mauve Moda



Pink Shantung



Rosewood Cora



this look is inspired by...

16-1341  
BUTTERUM



## BUTTERUM

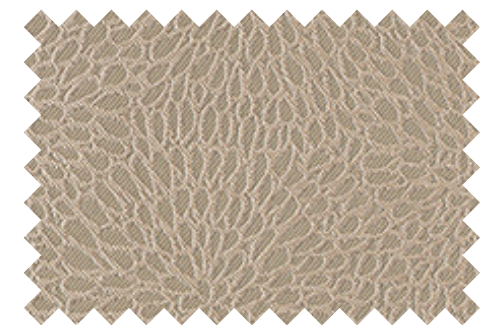
This toasty camel with gold undertones is the quintessential fall neutral. Patterns and textures embolden the tone, and allow for coordination with virtually any accent color.



Acorn Moda



Gold Alkaline



Beige Sonnet



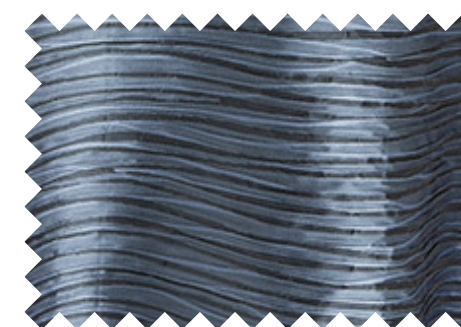


## NAVY PEONY

A cosmopolitan neutral, Navy Peony is a perfect counterpart to both warm and cool colors. Bright reds and oranges perk up the deep tone, while silvers add a wonderfully crisp mood.



Slate Faille



Pacific Swell



Midnight Velvet





## NEUTRAL GRAY

Enigmatic and crowd pleasing, this relaxed shade coordinates with every color on the spectrum. The trend of mixed metallics plays naturally with this shade; mix with deep blues and striking ornaments for a moody vibe.



Baroque



Dove Velvet



Magma



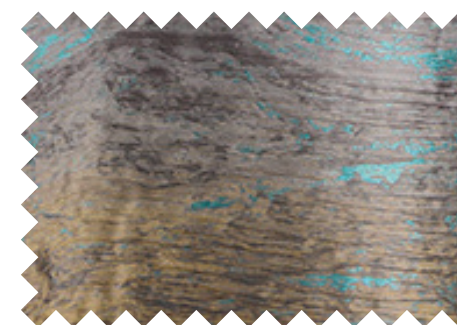


## SHADED SPRUCE

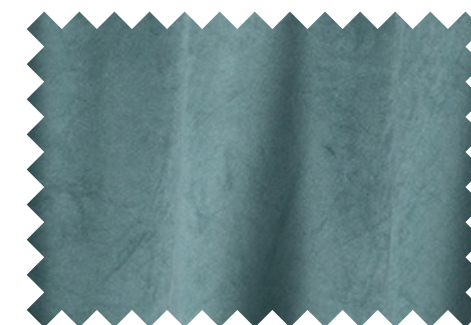
Bringing the outdoors in has been trending in special event design, and this forest green brings evergreens and pinecones to mind. Coordinate with red tones and exotic blooms for an unexpected tablescape.



Mallard Velvet



Chrysocolla Marble



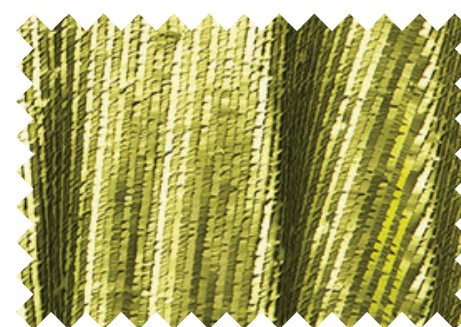
Arctic Velvet





## GOLDEN LIME

Announce opulence and vibrancy with this metallic-tinted green hue. Warm gold tones are a natural combination, and equally bold shades make a high-impact statement for meaningful soirees.



Citron Gigi



Lagoon Duet



Citron Lamour



17-4041  
MARINA



## MARINA

This unexpected bright shade delivers excitement to a traditional autumn palette. A fresh cool blue is enhanced by contrasting bright colors, and adds energy to traditional tones.



## Cornflower Shantung



## Azure Agate



## Lake Faille





## AUTUMN MAPLE

An organic hue that is anything but ordinary can spice up the table top. Introduce this surprising neutral to any palette to add a bronzed henna glow.



Amber Shantung



Bronze Jacks



Amber Twist





F A L L 2 0 1 7

## C O L O R R E P O R T

FOLLOW US @BBJLINEN

R E N T A L O F  
E X Q U I S I T E  
L I N E N A N D  
E X C L U S I V E  
C H A R G E R S

B B J L I N E N . C O M

8 0 0 . 5 9 2 . 2 4 1 4

## B R I N G Y O U R I D E A S T O L I F E

Introducing BBJ Linen's new and improved Virtual Design Center! It's an easy-to-use tool for party planners, event designers, and brides-to-be, giving you the ability to create the perfect design for your next event. With the choice of different table sizes, event venues, lighting effects, and so much more – your creativity is the limit to your design. See all the new features and try the Virtual Design Center yourself!

T R Y T H E V I R T U A L  
D E S I G N C E N T E R