



# i2i Remote Quick Reference Guide

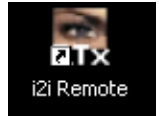


4287 West 96<sup>th</sup> Street  
Indianapolis, IN 46268  
866-SEE-MORE  
[www.itechdigital.com](http://www.itechdigital.com)

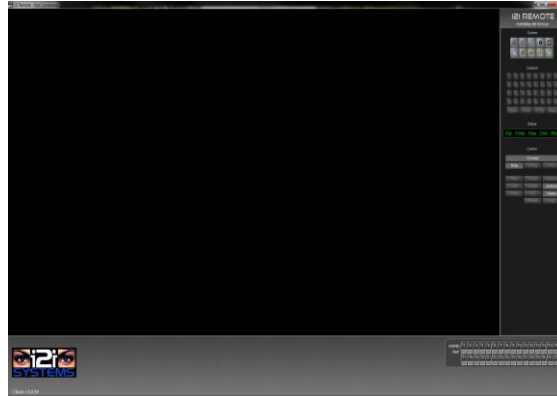
**FOR TECHNICAL SUPPORT CALL 866-733-6673**

# Opening the i2i Remote Application

Launch the i2i Remote™ by double clicking on the i2i Remote™ icon, selecting i2i Remote™ from your programs menu or by clicking on your quick launch icon.



This will start the i2i Remote™ software.



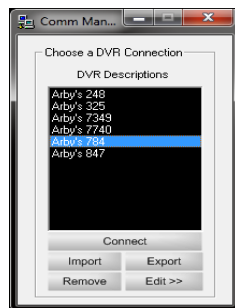
## Connecting to a DVR Location

Click the *Connect* button located half way down on the right side of the screen



This will open your *Comm Manager*. The Comm Manager is similar to an address book for all of the DVRs you will connect to.

Scroll through the list of available DVR Descriptions until you find the desired location



Click the *Connect* button at the bottom of the Comm Manager



## Logging In / Out

Enter your *Username* and *Password* into the *User Logon* window.

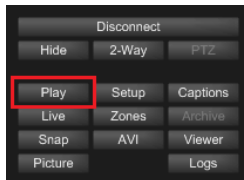
Your *Username* will need sufficient rights in order to access the DVR remotely.

Click the *OK* button

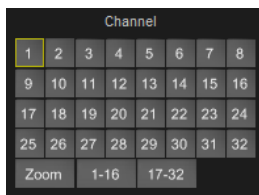


# Reviewing Recorded / Stored Video

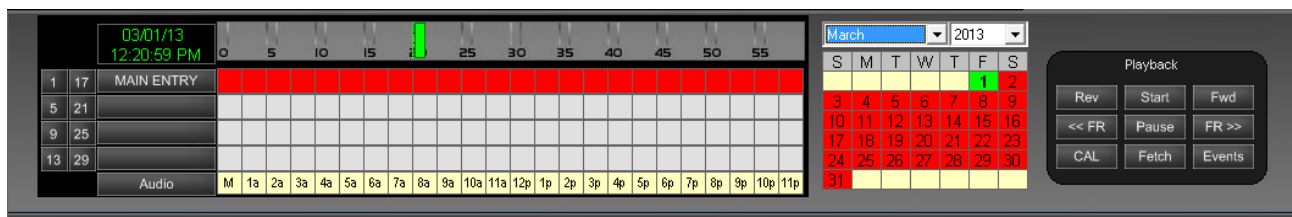
**Click Play** Click the Play button in the bottom right of the screen.  
The Playback controls will appear at the bottom of the screen



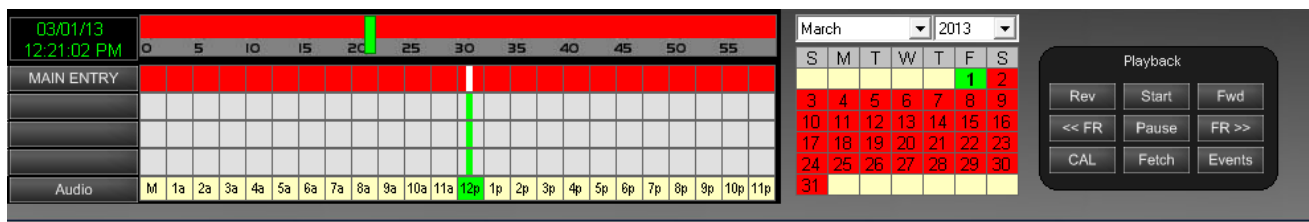
**Select a Camera** Click on a Channel number from the list in the top right of the screen  
Video will not appear until you click Start (last step)



**Select a Year, Month & Day** Select the year, month and day. Red indicates recorded video. Yellow indicates no video stored and green displays your current position/date.



**Select an Hour** Select the hour you wish to review. Click on the red square above the hour you need.



**Select a Minute** A 60 minute timeline will appear at the top of the Grid with a green line at your current position. Click on the timeline to select the exact minute where you would like to begin. Areas in Red have video, Gray areas have no video.

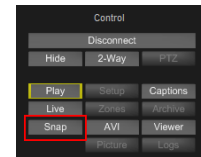
**Click Start** Click Start in the bottom right of the screen. Your video will begin to play.



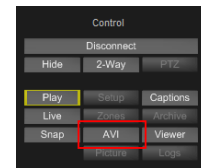
# Burning Saved Video to a CD

Before creating a CD you must first save the desired video in a *Snapshot* (JPEG) or *AVI* file format.

**Snapshot** – A snapshot is a still, single image that may be taken any time while viewing live or recorded video. To save a snapshot click on the *SNAP* button in the *Control Panel*. You may later review the snapshots in the *VIEWER* (see below).



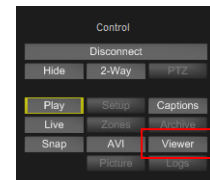
**AVI** – A video clip may be made at any time while viewing live or recorded video. To create video clips, first locate the video that you want to burn and pause it before beginning this process (if you are in a multiple screen split the video will always be taken from the upper left position).



Click on the *AVI* button in the *Control Panel*. A window will appear allowing you to title your video clip (you are not required to name AVIs), then click *START*. After clicking start, a box will appear below or to the right of the *AVI* button and a blue bar will indicate the AVI clip is being created.



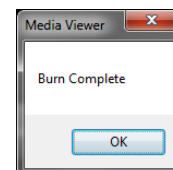
**VIEWER** – This feature allows you to easily review the Snapshots and AVI files that you have created and burn them to disk. Click on the *VIEWER* button in the *Control Panel* to open. At any time you may close this window by clicking on the X in the upper right hand corner.



**Viewing Snapshots and AVIs** – To access saved AVI files or snapshots click in the box next to the file (a checkmark will appear) and select *VIEW*. A watermark verification box will appear – click *OK*. Your selected file will open and display. Once you've determined the video files you want to burn, click on the boxes next to those files.

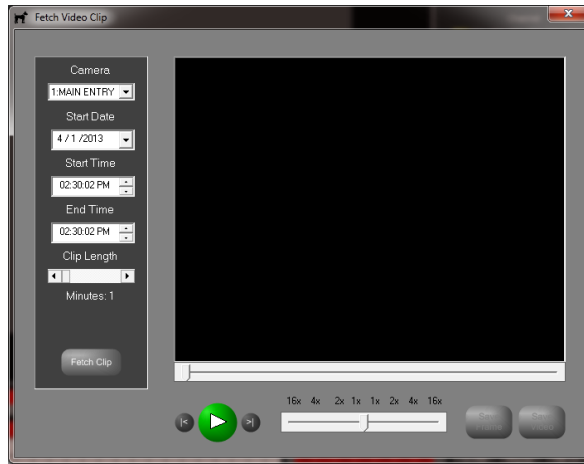


**Burning** – Place a blank CD-R in the CD burner tray and click the *BURN* button. A notification will appear when the burning process is complete. You may then remove the CD from the drive.

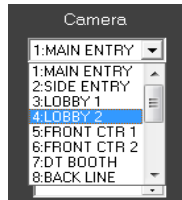


# Using Fetch for Video Retrieval

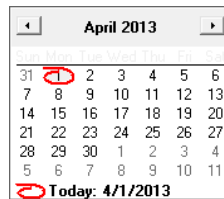
**Click Fetch** The Fetch Video Clip window will open.



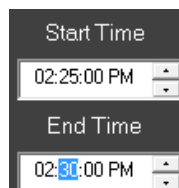
**Select Camera** Click the drop-down arrow to select the desired camera.



**Select Date** Click the drop-down arrow to select the desired date.



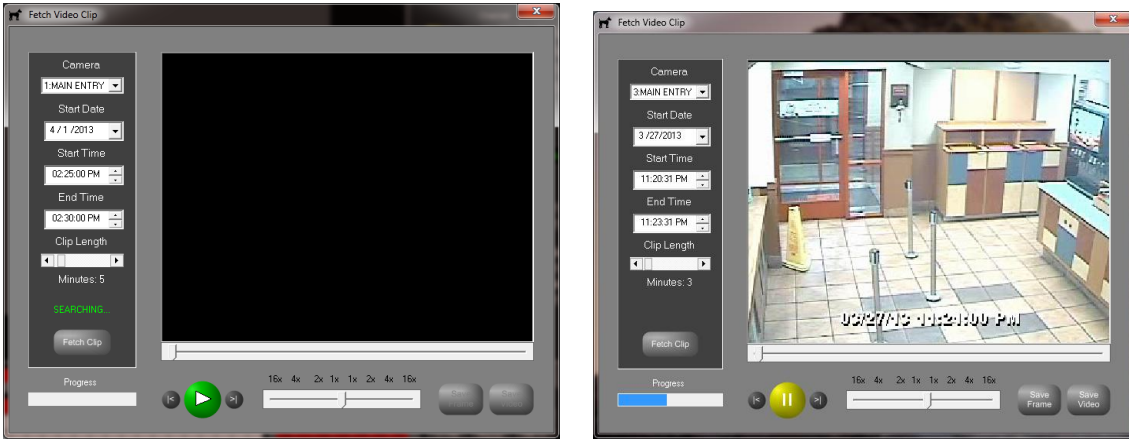
**Select Time** Adjust the time frame by setting the start and end time.



# Using Fetch to Save Snapshots and Video Clips

## Click Fetch Clip

A progress bar will appear and the video will start loading and playing.



## Click Save Frame

Click *Save Frame* to save a still picture for future use (Burn to a CD or Copy to Flash Drive)



## Click Save Video

Click *Save Video* to save the clip for future use (Burn to a CD or Copy to Flash Drive)



## Open Viewer

Use the *Viewer* to open your saved Snapshots and Video Clips