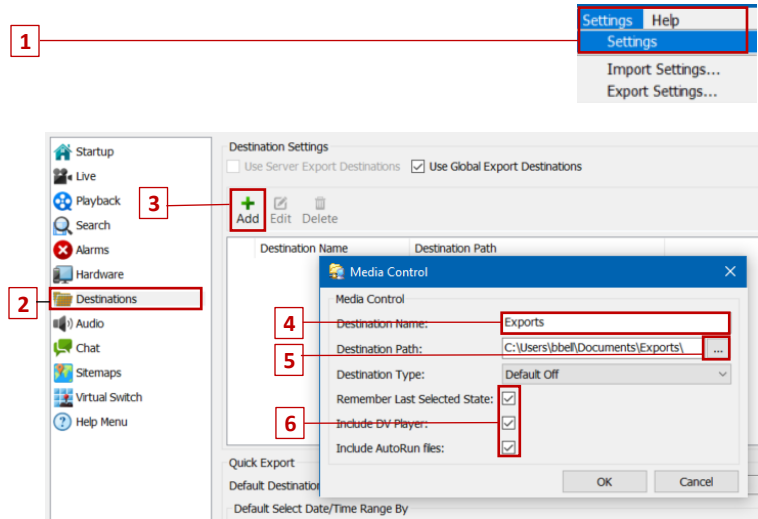


Create Export Destination

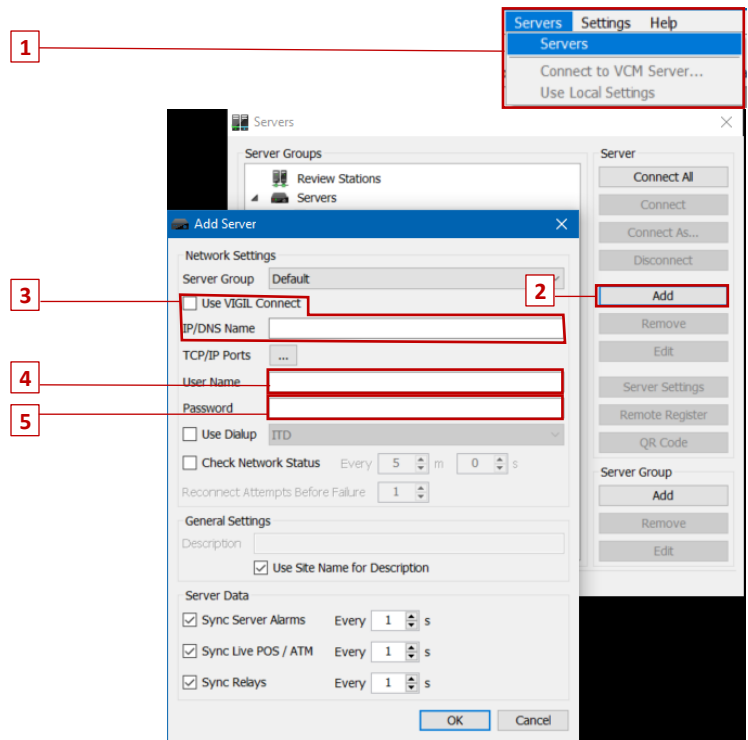
After installation, create an export destination
To select where to exported media is stored

1. Click on settings in the toolbar, select Settings again from drop-down menu
2. Click on Destinations on the left-hand menu
3. Click on Add to create your export Destination
4. Create a name
5. Use the ... button to select your export location
6. Check all 3 boxes
7. Click OK and OK to save export destination



Add Server to Server List

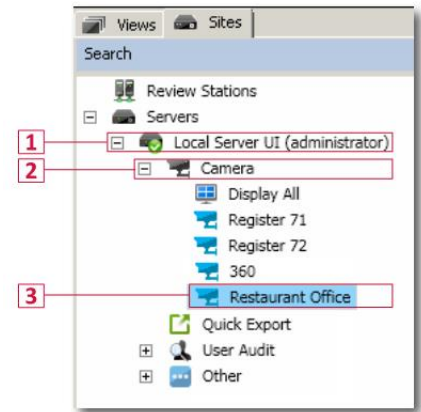
1. Click on servers in the toolbar, select Servers again from the drop-down menu
2. Click on add on the right-hand side
3. Check use VIGIL Connect if server is using Alias, enter IP info if direct connect
4. Enter User Name
5. Enter Password
6. Click on OK
7. Server will now appear under server tree



View Live Video

To bring up live Video:

1. Click the + next to your VIGIL Server
 - a. If you have not set up automatic login, you will be prompted to enter your credentials.
2. Click the + next to the Camera icon to open the list of cameras on your server.
3. Double click a camera to bring up its live stream.
 - a. To view all cameras, double click display all.



**VIGIL will automatically update the layout of your Cameras based on the number of cameras being displayed*

Search for Video

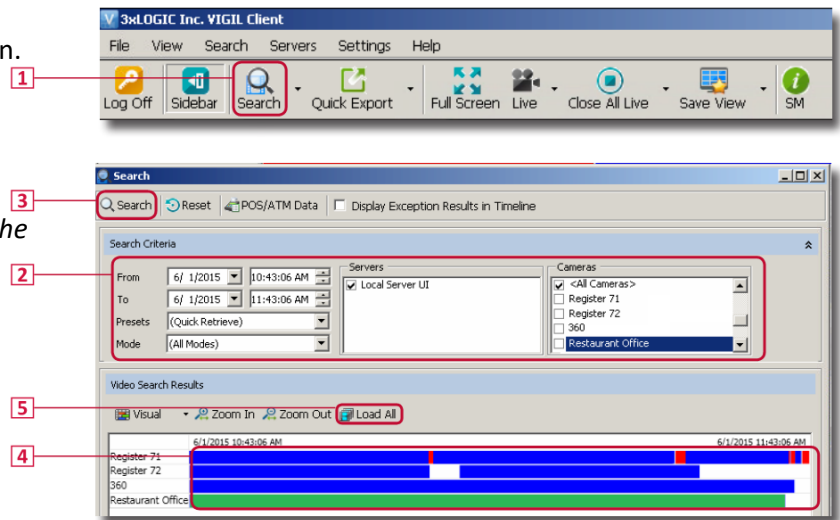
1. Click the search icon on VIGIL Client's icon toolbar.

**By default, the Search window will display the last hour's worth of video for all cameras*

2. Fill in the appropriate time interval using the To and From fields, or select a timeframe from the presents dropdown.
3. Click Search or press enter on your keyboard to begin the search.
4. Your search results will generate at the bottom of the search window.

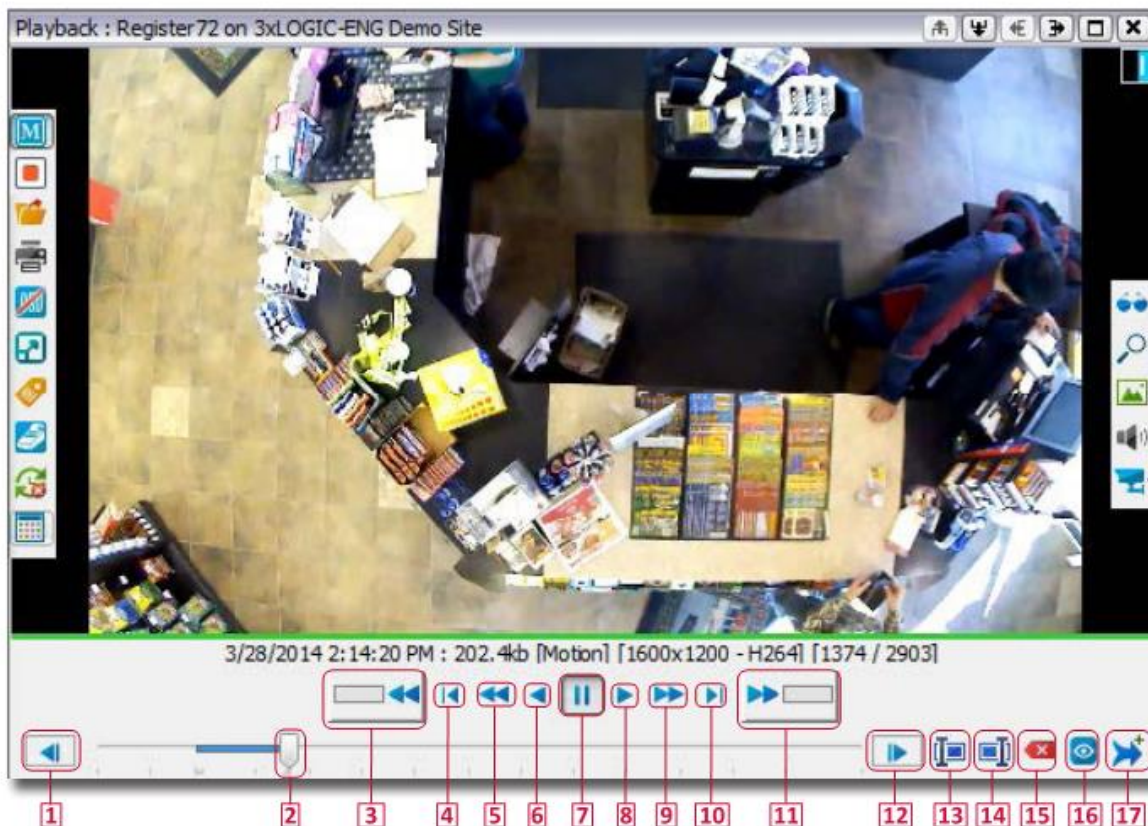
**The colors in the Video Search Results indicate the Type and presence of video.*

- **Green** indicates continuous video
 - **Blue** indicates motion video
 - **Red** indicates an alarm
 - **White** indicates no video
 - **If a camera is not listed, there is no video for that time period**
5. To begin viewing, double click the name of the camera you wish to view. You may also drag and select [or CTRL+Left-Click] multiple cameras and click load selected button to load the selected cameras. The load all button loads all playbacks at once.



Playback Video


Once video has been loaded, it can be played forward, fast forward, rewind, and fast rewind.

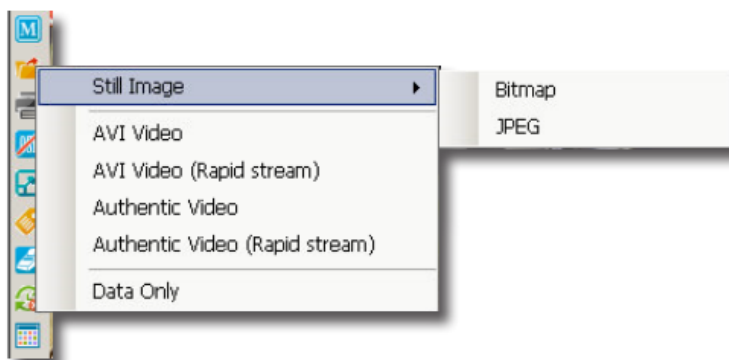


1	Go back one frame	10	Go to the end of the video
2	Click and hold, then drag to scrub through video	11	Click and hold, then drag to go fast forward
3	Click and hold, then drag to go fast backward	12	Go forward one frame
4	Go back to the beginning of the video	13	Start sub-range [narrow down playback]
5	Fast Rewind	14	End sub-range [narrow down playback]
6	Rewind	15	Clean sub-range makers
7	Pause	16	Loads the selected sub-range
8	Play	17	Add the marked sub-range of a file to the current stitched playback assembly list
9	Fast Forward		

Export Media

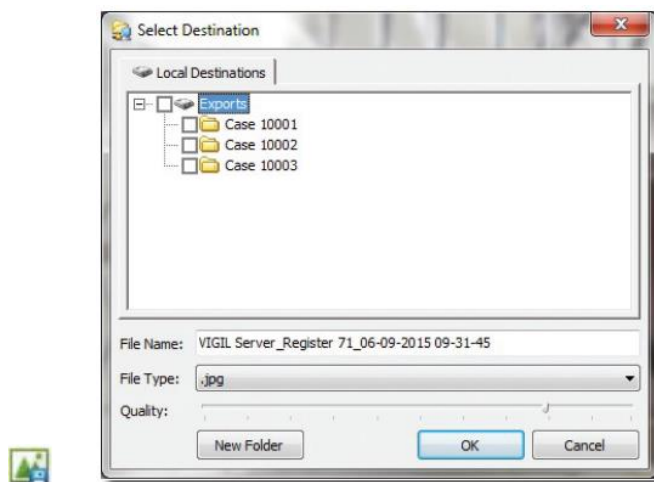
To export a still image, begin by viewing playback video. When you have reached the desired frame, pause the video. Bring your cursor to the left side of the video frame to reveal the Left-Edge Control

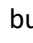
1. Click on the export icon. 
2. Mouse-over Still image.
3. Select the Still Image File Type.
 - Bitmap: better quality/larger file size
 - JPEG: lesser quality/smaller file size




After choosing an image type, you will be presented with the Select Destination window. Select one or more of the export destinations by checking the corresponding checkbox. You can create new folders within the Exports folder by clicking New Folder. Name the still image file, and click OK to begin the export process.

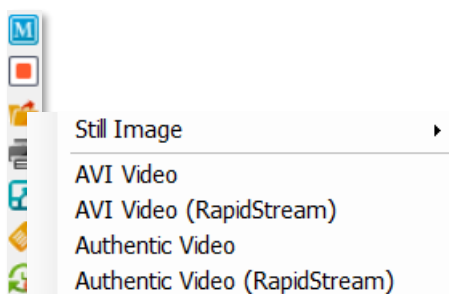
**If you place multiple checkmarks, multiple instances of the image will be exported.*



After successfully exporting a still image to your destination, the  button will appear in the Left-Edge Control. Clicking this button will save the current still to the last used export destination. This feature is useful if multiple stills must be exported to the same destination.

To export video, begin by viewing the desired playback video time frame. Bring your cursor to the left side of the video frame to reveal the Left-Edge Control

1. Click on the export icon. 
2. Select desired video format.
 - AVI Video: Common video file
 - Authentic Video: raw video files extracted from server [Includes player to view video]



Select your desired export destination, name the file and click OK to begin the export process.