

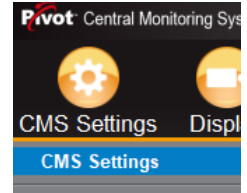
## Log In

- Open software
- Enter username admin
- Leave the password empty
- Check the box for save password
- Click Ok to sign in

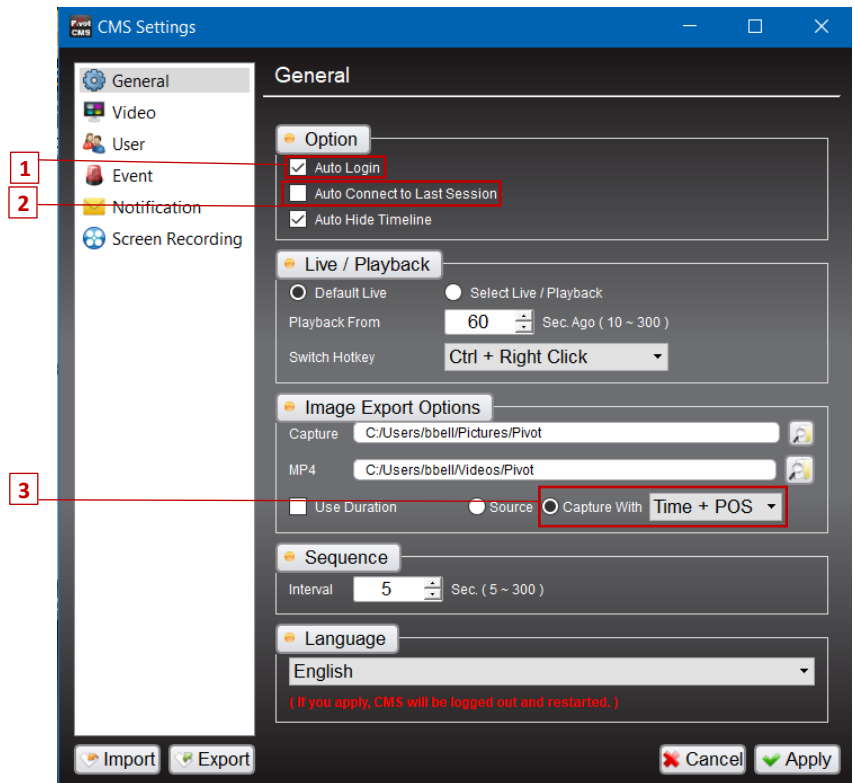


## Initial Settings Adjustments

- Click on CMS Settings
- Click on CMS settings in the drop-down menu

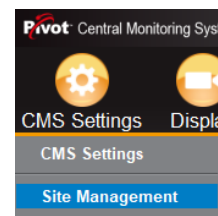


1. Check the box for Auto Login
2. Uncheck the box for Auto Connect to last session
3. Check the radial button for Capture with Time + POS
4. Select **Apply**
5. Then close with X on top right



## DVR Site List Management

- Click on CMS Settings
- Click on Site Management from the drop-down menu



The screenshot shows the 'Site Management' window. On the left, there is a form for adding a new site. On the right, there are two panels: 'Groups' and 'Sites'. The 'Groups' panel shows a list with one entry 'Site'. The 'Sites' panel shows a table with columns 'Name' and 'Url'. At the bottom of the 'Groups' panel, there are buttons for 'Add Grp.', 'Edit Grp.', and 'Del. Grp.'. At the bottom of the 'Sites' panel, there is a 'Delete' button. A 'Close' button is at the bottom right of the window.

Numbered callouts point to the following elements:

- Group dropdown menu (set to 'Site')
- Site Name text input field
- Model dropdown menu (set to 'VMAXA1')
- Address text input field
- Port text input field (set to '7127')
- ID text input field
- Password text input field
- 'Clear' button (with a red 'X' icon)
- 'Add' button (with a green plus icon)

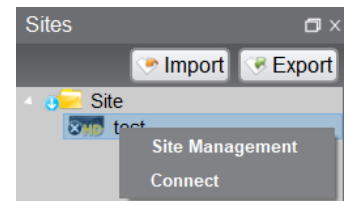
Below the form, there is an 'Auto Site Discovery' section with a 'Refresh' button and a table with columns 'Name', 'Url', and 'Ch#'. A red line points from callout 9 to the 'Add Grp.' button.

1	Group where DVR[site] will be added	6	ID is username
2	Site Name is preferred description	7	Password is password
3	Model of DVR, will be VMAXA1	8	Add site to group
4	IP Address of Site	9	Create new group
5	Port is 7127		

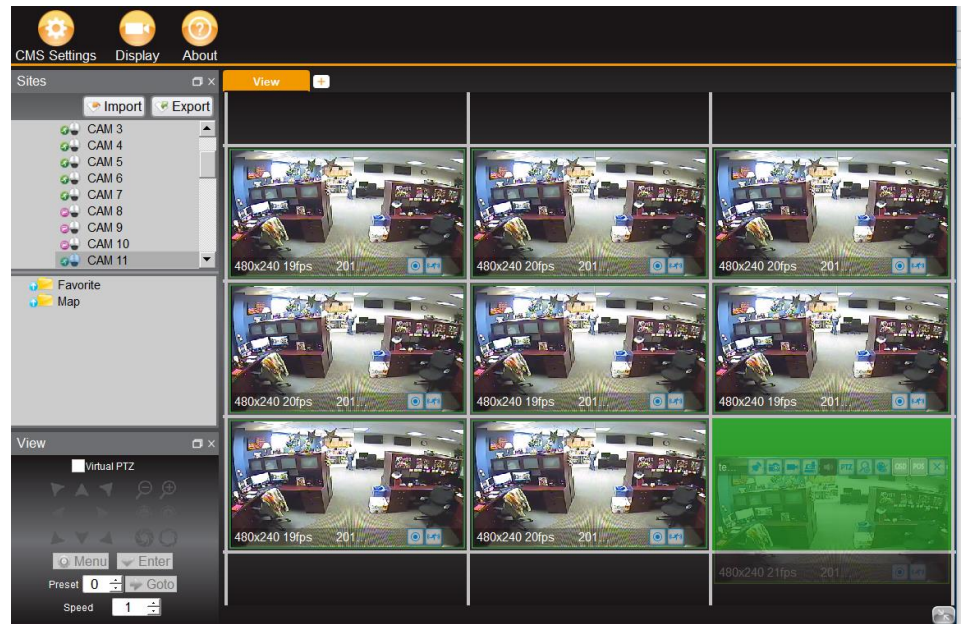
# DIGITAL WATCHDOG QUICK REFERENCE GUIDE

## Live View

- Right-click on site and choose connect



- Drag the full site name to the Viewing pane on the right; all live images for cameras will appear
- Double-click on single image to expand to full view
- Double-click to return to the normal view
- Video images can be rearranged by simply clicking, holding, and dragging the image to a new window location
- A green box will indicate where the image will now be place

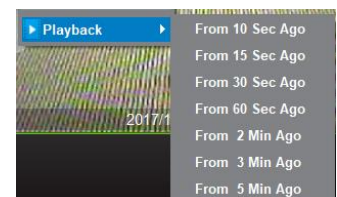


*\*Expanding the site name and dragging individual views will display single images only*

*\*Right-clicking allows you to close the selected image, or choose close all to close all open currently displayed live feeds*

## Playback

- After connecting to a site, either drag over the entire site or drag over a single image
- When the video has loaded, right-click on the image and choose one of the playback options
- This puts the software into playback mode



*\*A timeline is hidden at the bottom of the screen for a visual representation of the footage available; simply move your mouse cursor to the bottom of the window to reveal the timeline*

- There are two options available in the view window, a playback control menu, and a calendar
- By default, the Control window appears first in Playback mode.
- These buttons are the playback speed controls
- Clicking on the search button displays the calendar
- You can select a date and then enter a time in the Bottom left corner to navigate to a specific date
- Press go once the date and time has been entered

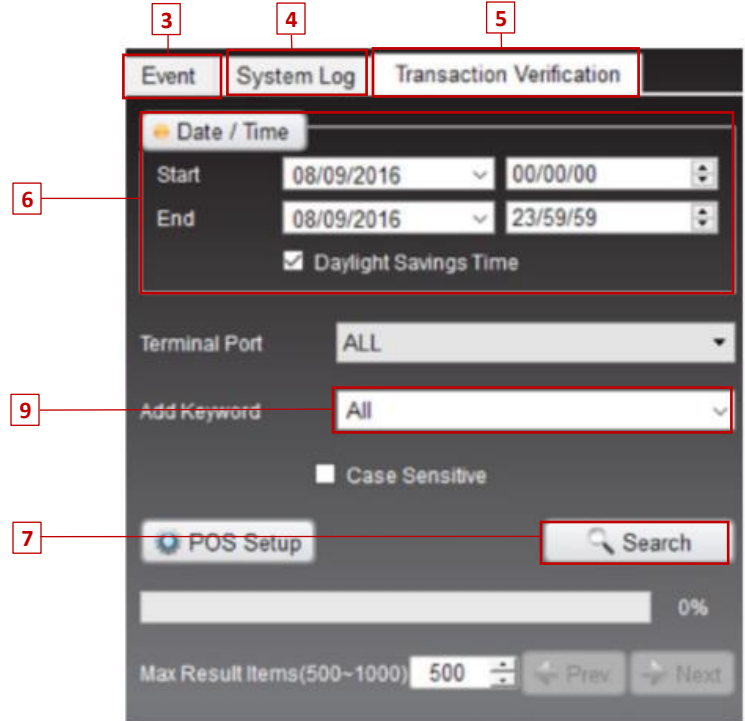
*\*Red days indicate recorded footage is available*



# DIGITAL WATCHDOG QUICK REFERENCE GUIDE

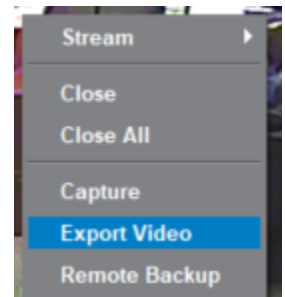
## POS Transaction Verification

1. Right Click on the site name
2. Select Event/POS Search
3. The Event tab shows preconfigured events
4. The System tab shows system logs for troubleshooting purposes
5. The Transaction verification tab allows for the searching of stored POS data
6. Select desired time frame in the Date/Time Section
7. Click on search to populate data
8. Double-clicking on the event displays the video to the right in the viewer window
9. Keywords can be searched view the add keyword entry



## Video Clip Creation

- While in playback, right click on image And select Export video
- A red 'R' will appear on image indicating video Is being recorded
- Right-click on image after time has lapsed, Select Export video again
- The video clip is automatically created and Stored in the video folder



## Remote Backup

- Right-click on site and select Remote Backup
- Select start and end time
- Select the specific camera channels
- Choose the recording path and file name to backup the video to
- Click on start to begin

