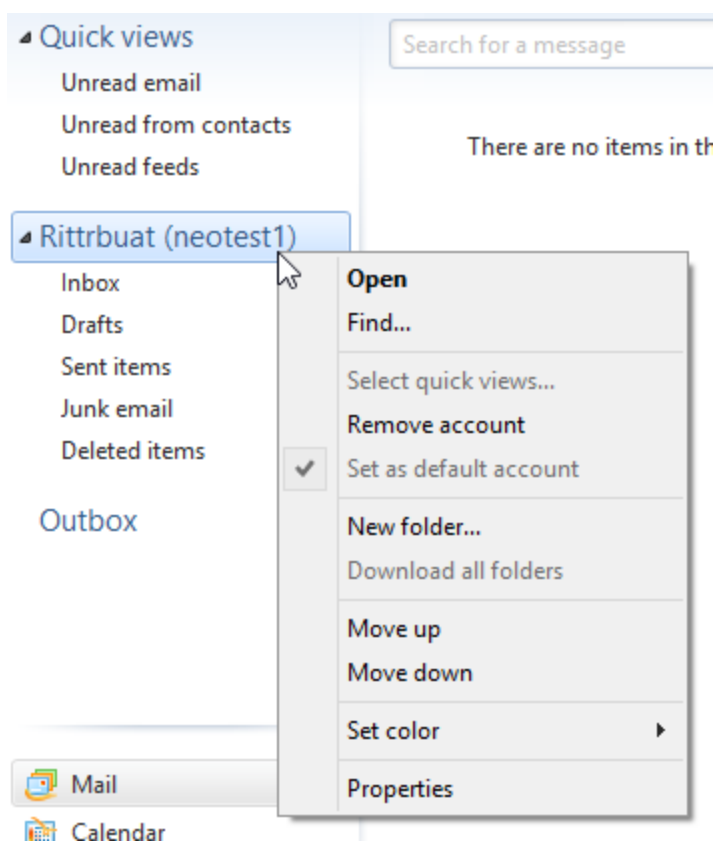


Connecting your email account to Windows Live Mail 2012

Version 1.1

This easy guide will help you set up your Windows Live Mail 2012 email program to receive and send email using your new email account settings.

1. Open Windows Live Mail 2012. Right-click your email address in the left column, and then click **Properties**.



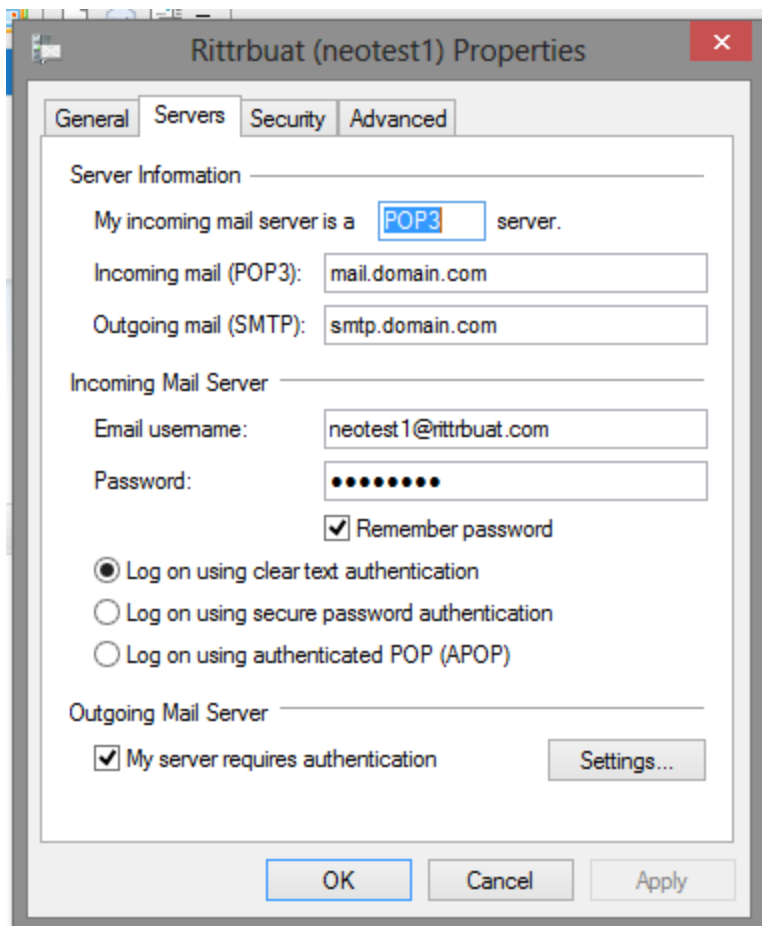
The Properties dialog box will appear.

2. Click the **Servers** tab.

Look at the **My incoming mail server is a** field.

For **POP3**, continue to **step 3**.

For **IMAP**, skip to **step 6**.



POP Steps

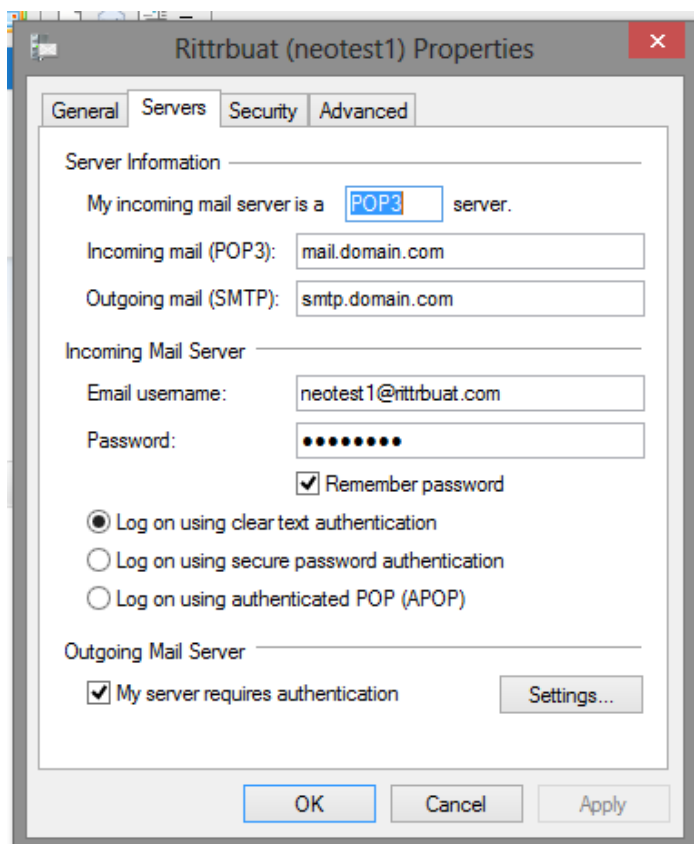
3. Edit the **Incoming mail (POP3)** field to:
mail.domain.com (where "domain.com" is the last part of your e-mail address)

Edit the **Outgoing mail (SMTP)** field to:
smtp.domain.com (where "domain.com" is the last part of your e-mail address)

Change the **Email username** to your *full* E-mail Address, including the @ and the domain (such as test@rittrbuat.com).

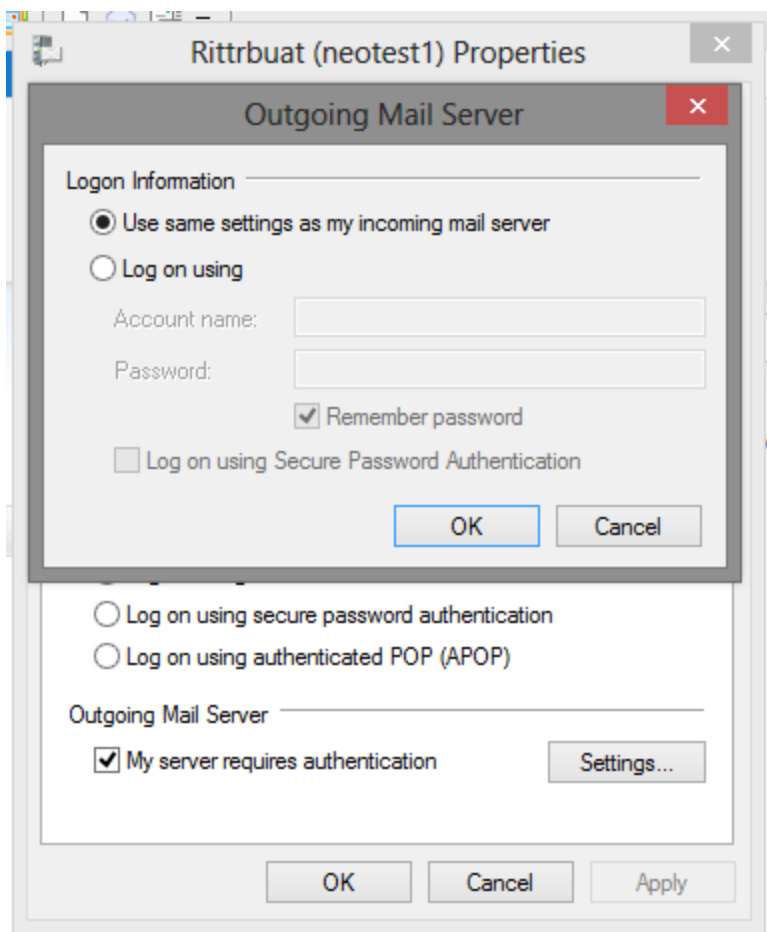
Make sure your **Password** is correct.

Select **Log on using clear text authentication** and check the **My server requires authentication** box.



4. Click **Settings** in the Outgoing Mail Server section. The Outgoing Mail Server settings dialog box will appear.

Ensure **Use same settings as my incoming mail server** is selected and then click **OK**.



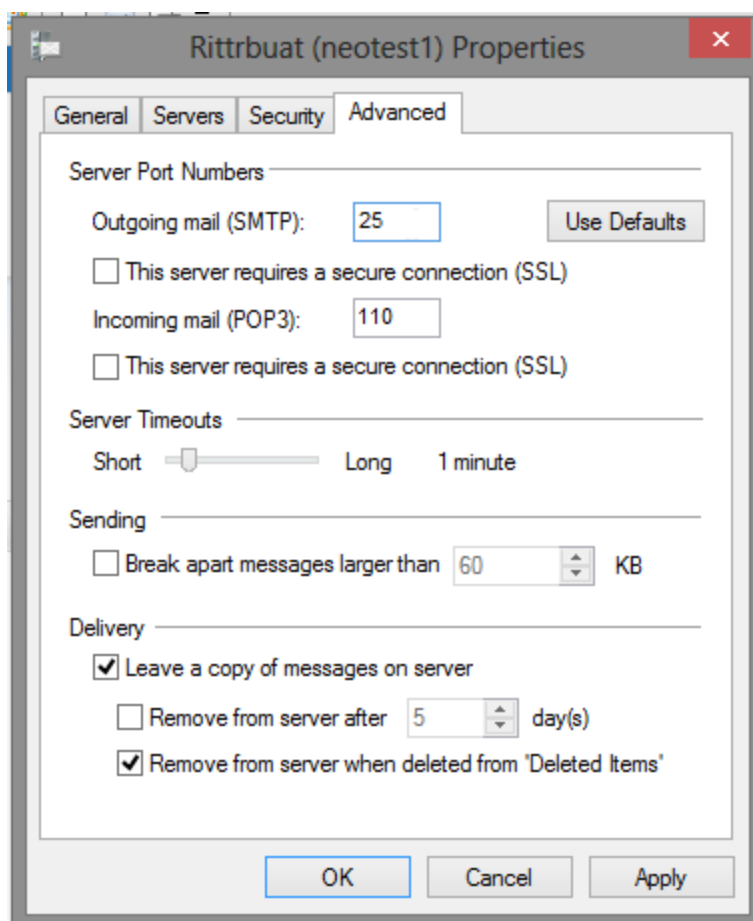
5. Click the **Advanced** tab.

UNCHECK both **This server requires a secure connection (SSL)** boxes.

Enter “25” in the **Outgoing mail (SMTP)** box.

Enter “110” in the **Incoming mail (POP3)** box.

Click **OK**. Your email is now set up. Congratulations!



IMAP Steps

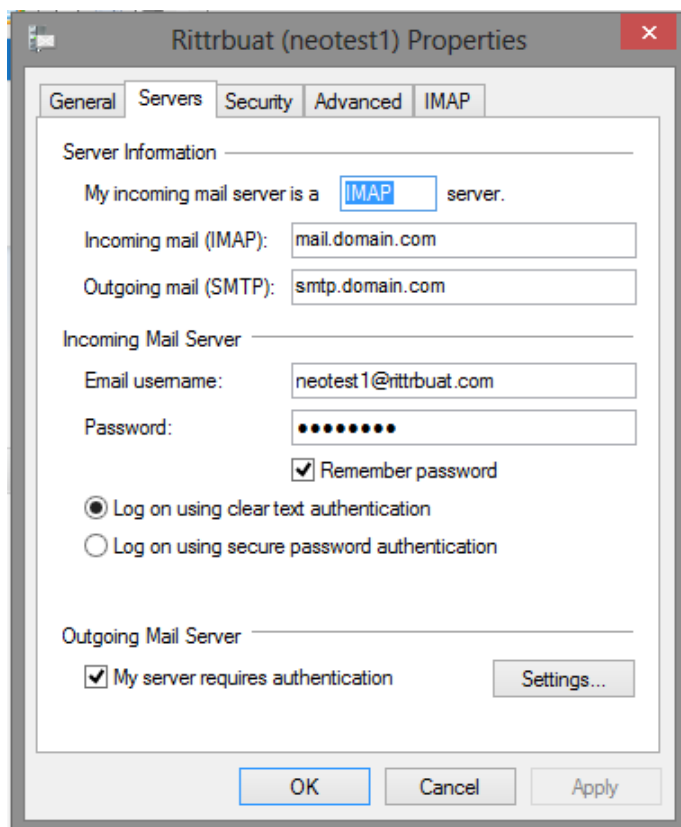
6. Edit the **Incoming mail (IMAP)** field to:
mail.domain.com (where domain.com is your email domain)

Edit the **Outgoing mail (SMTP)** field to:
smtp.domain.com (where domain.com is your email domain)

Change the **Email username** to your *full* E-mail Address, including the @ and the domain (such as test@domain.com).

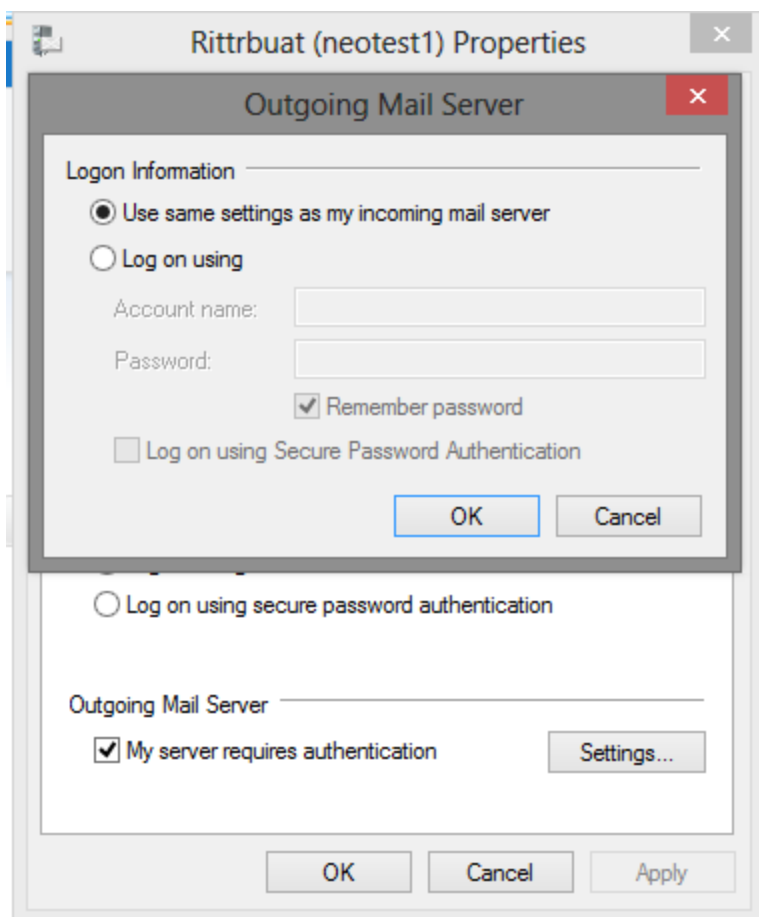
Make sure your **Password** is correct.

Select **Log on using clear text authentication** and check the **My server requires authentication** box.



7. Click **Settings** in the Outgoing Mail Server section. The Outgoing Mail Server settings dialog box will appear.

Ensure **Use same settings as my incoming mail server** is selected and then click **OK**.



8. Click the **Advanced** tab.

Check both **This server requires a secure connection (SSL)** boxes.

Enter "25" in the **Outgoing mail (SMTP)** box.

Enter "143" in the **Incoming mail (IMAP)** box.

Click **OK**. Your email is now set up. Congratulations!

