

## Delivery Defender Universal Remote Display

Part Number: RD7CTS-DD



**PROTEUS® Delivery Defender™** is a universal remote display combined with an overfill alarm in one compact NEMA4X enclosure. This unit can connect to our **OMNTEC PROTEUS®** along with most industry standard Tank Gauging systems. The **Defender** provides inventory, delivery, and alarm information outside where your fuel provider can see the current tank conditions. Equipped with a UV protective viewing screen, heater, thermostat, high decibel horn, strobe light, and function buttons the **Defender** provides critical information for the delivery driver.

### How it works:

When a tanker pulls on to the site the driver can easily see the bright green light on the **Delivery Defender™** indicating the tanks have no alarms and that the **Defender** is functioning normally. The driver can then easily check each tank's ullage from the **Defender** ensuring the fuel they're hauling will fit into the storage tanks. This saves time from walking into the building and promotes after hours fueling by having access to the Tank Gauge when the business is closed.

Providing enhanced delivery monitoring, once a drop has started the **Delivery Defender's™** display will "wake up" and switch to the tank receiving the fuel. Simultaneously an amber light will flash letting the driver know that the delivery is being tracked (the light will turn off once the delivery has been completed).

The driver can view the **Delivery Defender™** screen allowing them to verify that the correct tank is receiving fuel. The display will continue tracking the delivery and then switch and track the next tank as each delivery is completed. If an overfill or high level is reached, the **Defender's** strobe and horn will energize alerting the driver and display the condition on the screen.

The alarm can then be acknowledged by the driver and the **Defender** will acknowledge the Tank Gauge in the building (option must be enabled in setup).

The **Delivery Defender™** can be tested by pressing and holding the function button for 3 seconds. Also, if the **Defender** were to lose communication with the ATG, the red strobe and horn will chirp on and off every 10 seconds, System Normal green light will turn off, and display will show "COMM FAIL" alerting the site and driver of the condition.

# PROTEUS®

## Delivery Defender Universal Remote Display

### Part No. RD7CTS-DD

The following table will explain the functions of the **Delivery Defender™** (See Figure 1).

Notes:

**Green Light** - Power available, communications good, probes functioning, tank not in high level (all conditions must be met)

**Amber Light** - Flashes during delivery in progress

**Red Strobe Light** - Will flash for high level, when trying to fill tank already in high level, and at max height (all alarm levels received and programmable from main ATG)

**Horn** - Sounds for high level, when trying to fill tank already in high level, and at max height (all alarm levels received and programmable from main ATG)

**Self-test** - All lights flash, horn sounds, screen wakes up.

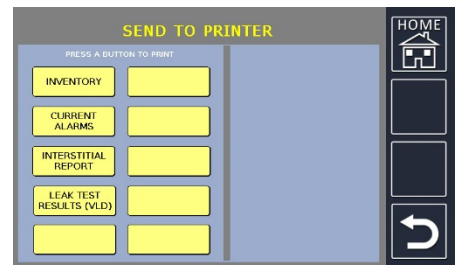
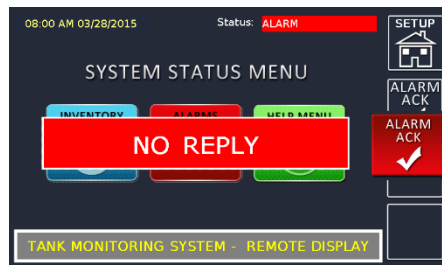
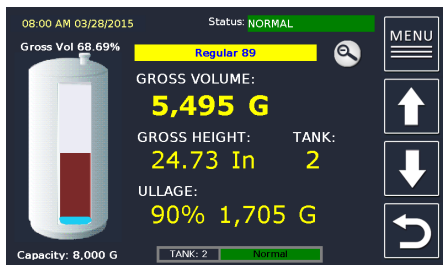
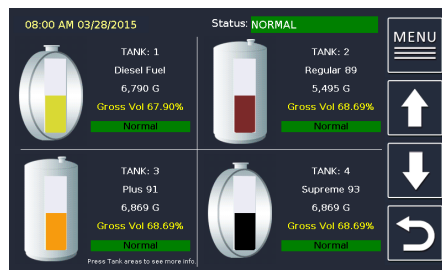
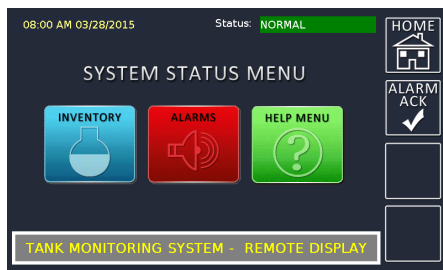
**Comm Fail** - Horn and red strobe will chirp every 10 seconds, display shows "COMM FAIL", green light will turn off

**Function Button** - If alarm condition, acknowledges alarm and wakes screen to current alarms page. If pressed and held for 3 seconds, wakes screen, tests all lights and horn. If normal condition, wakes screen. Consecutive presses will cycle LCD screen through selected Homepage menu and current alarms.

	Light	Horn	Wake Screen	Alarm ACK	Self-Test	Cycle Page
<b>Normal Condition</b>	✓ (green)					
<b>Pressing Pushbutton</b>			✓	✓		✓
<b>Holding Pushbutton</b> (hold for 3 seconds)	✓ (all)	✓	✓		✓	
<b>Receiving Delivery</b>	✓ (flashing amber)		✓			
<b>High Level Alarm</b>	✓ (red)	✓	✓			
<b>Communication Loss</b>	✓ (red)	✓ (chirp)				

Figure 1

### Display Screen Shots



## Delivery Defender Universal Remote Display

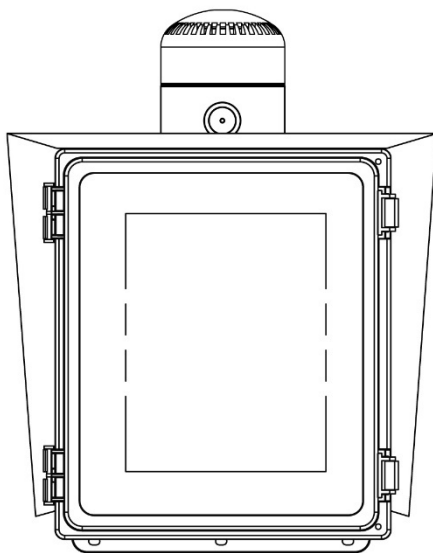
Part No. RD7CTS-DD

RD7CTS-DD Specifications		
<b>Input Power:</b>	100-240 VAC +/- 10% 50/60 Hz 25 watts (12VDC power available upon request)	
<b>Audio Visual Controls</b>		
Display:	Color 7-inch graphic display with touch screen	
Audible alarm:	85 dB piezoelectric horn	
System status:	3 LED's (OK, Warning, Alarm)	
<b>Operating Temperature:</b>	20 to 140 degrees F (-7 to 60 C)	
<b>Accessories:</b>		
	<b>WRS-232</b>	Wireless RS-232 link includes both tank gauge and remote transceivers
	<b>WRS-232R</b>	Wireless RS-232 repeater for extending WRS-232 wireless reach
	<b>RD-PCK</b>	Power cord kit
	<b>RD-232C-75</b>	75 feet RS232 cable
	<b>C232-422-RD7CTS</b>	RS-232-422 booster kit to increase distance of RS-232 output
	<b>ENC-4X</b>	NEMA 4X enclosure
	<b>HTR-1</b>	Heater for NEMA 4X enclosure
	<b>TEM-CS</b>	Thermostat for NEMA 4X enclosure
<b>Weight:</b>	15 lb.	

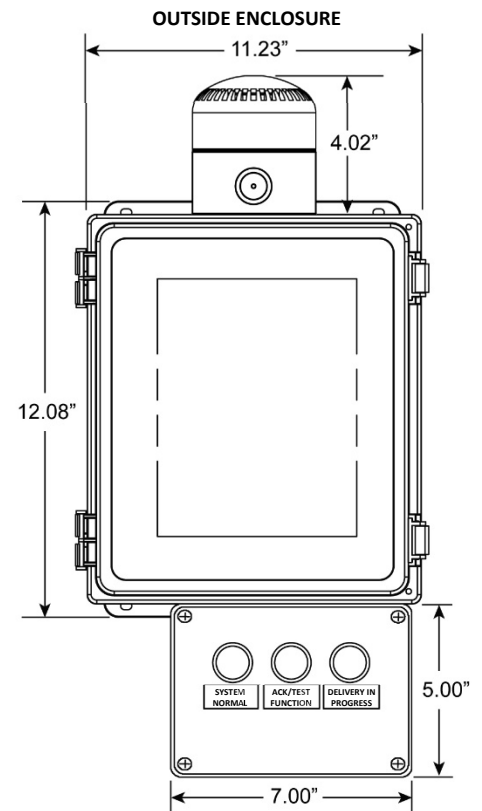
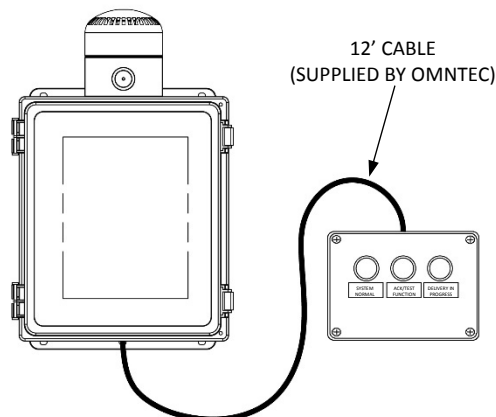
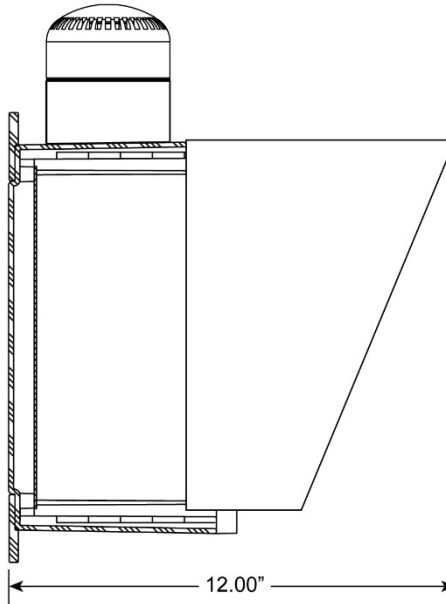
Content subject to change without notice, verify with manufacturer.

Patent Pending

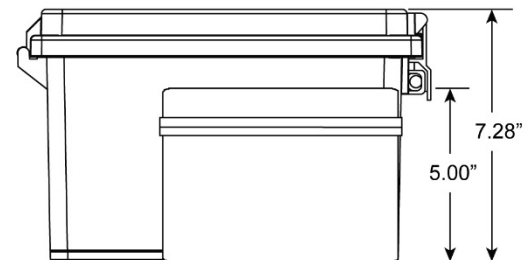
RD7CTS-DD WITH VISOR



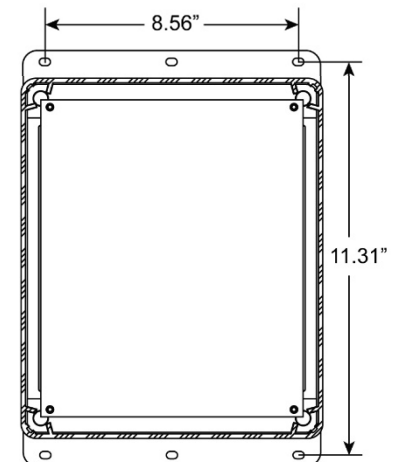
RD7CTS-DD WITH VISOR SIDE VIEW



OUTSIDE ENCLOSURE DEPTH DIMENSIONS



OUTSIDE ENCLOSURE MOUNTING DIMENSIONS



**OMNTEC**

2420 Pond Road  
Ronkonkoma, NY 11779

+1.631.981.2001

+1.631.981.2007

omntec@omntec.com

www.omntec.com