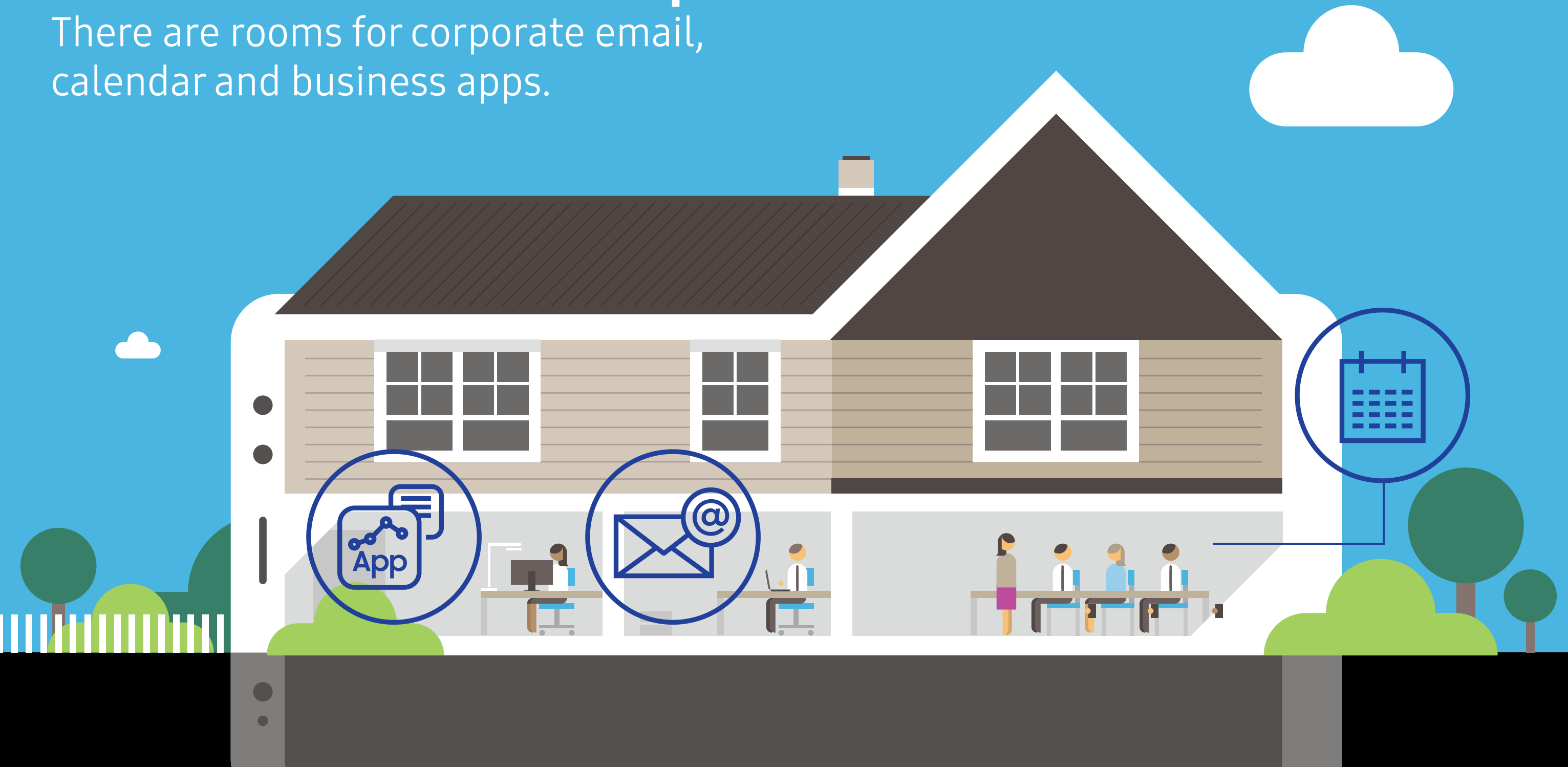


Your employees' smartphones are like a beautiful two-story house.



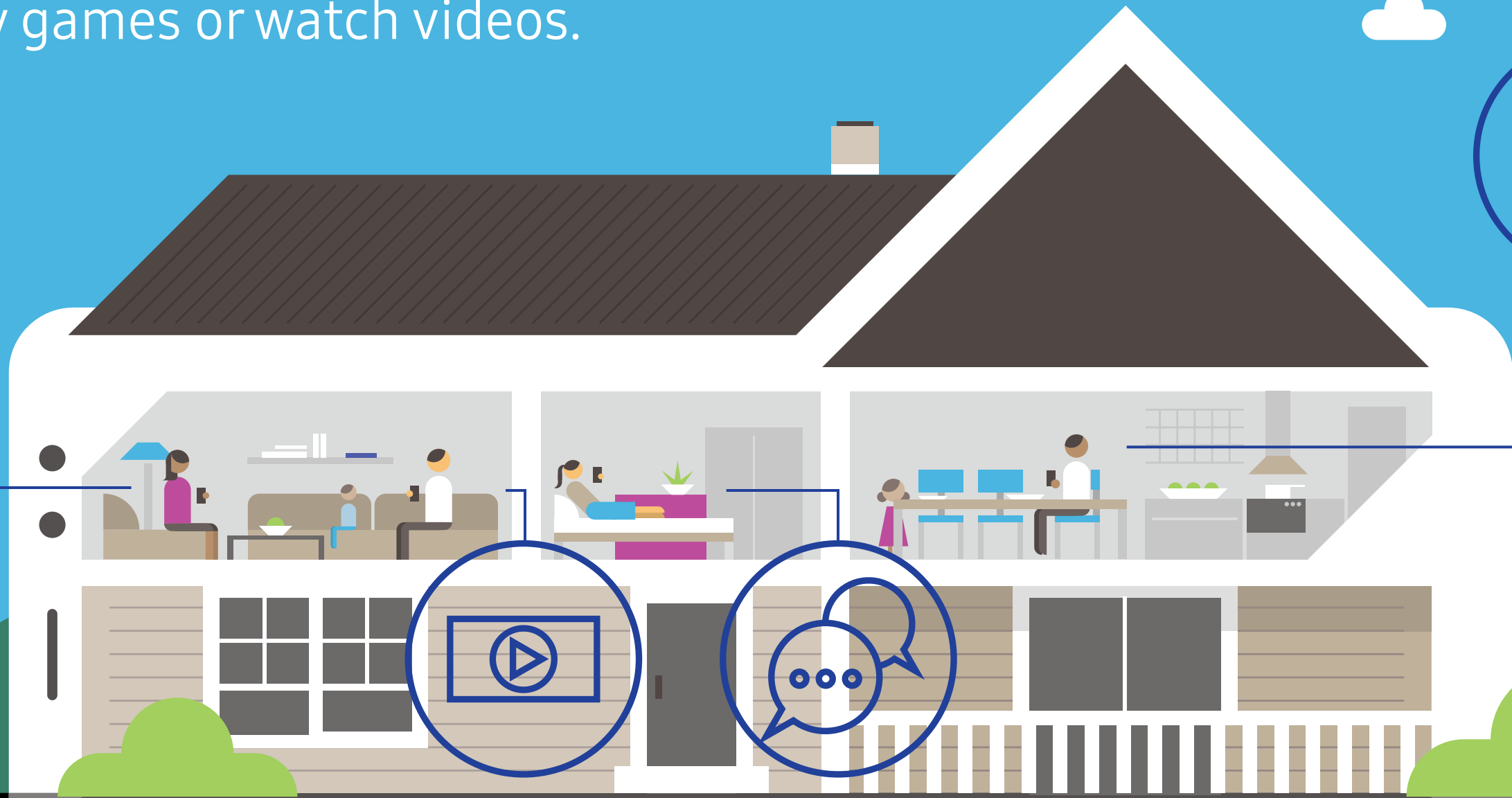
Mid level is their workspace.

There are rooms for corporate email, calendar and business apps.



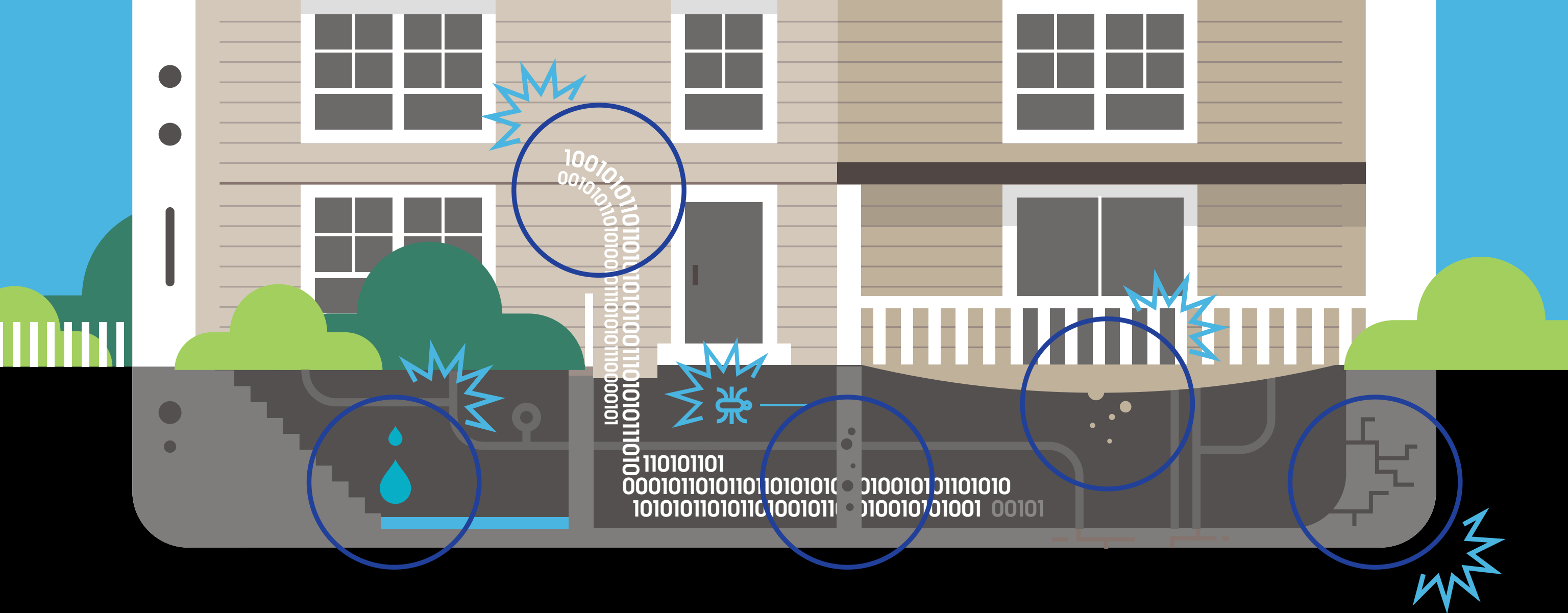
Upstairs is their personal space.

They can surf the web, access social media apps, play games or watch videos.



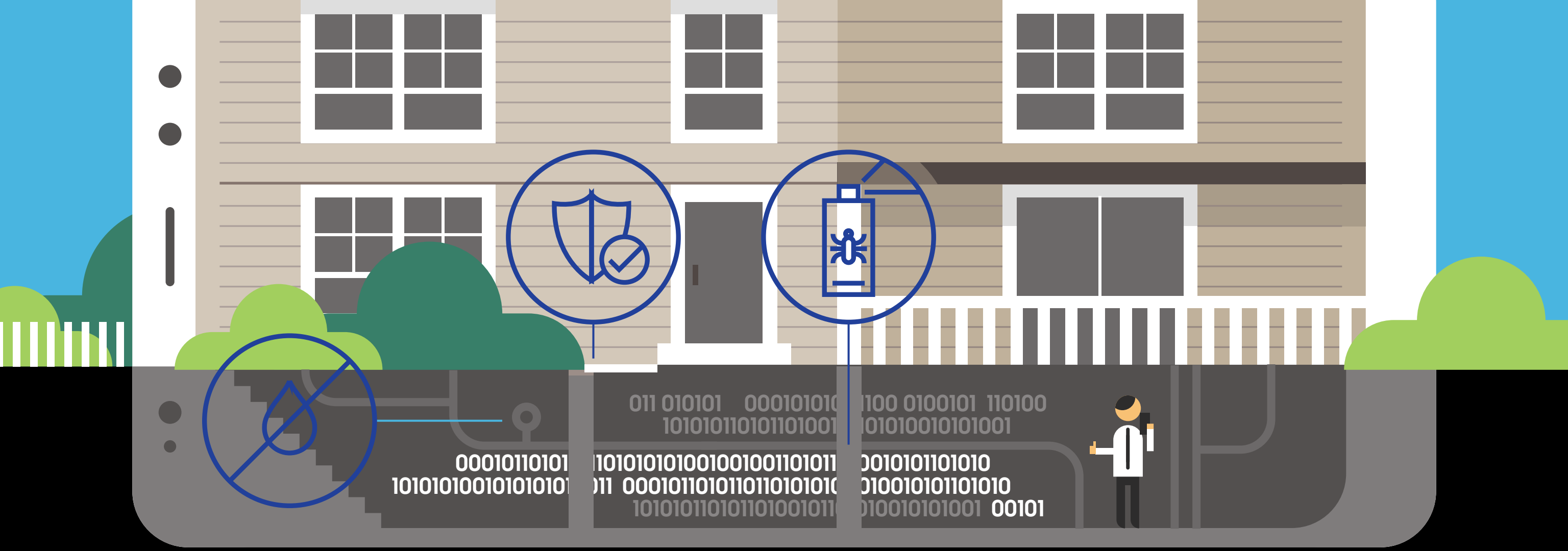
With biometric authentication and the right MDM policies, the house has secure doors and windows.





But a house is only as secure as its basement.

A problem in the basement can undermine the integrity of the whole home.



**For Samsung mobile devices,
the Knox platform is the
secure basement.**

The device is protected
from the hardware on up
and encrypted keys can
attest to its integrity.