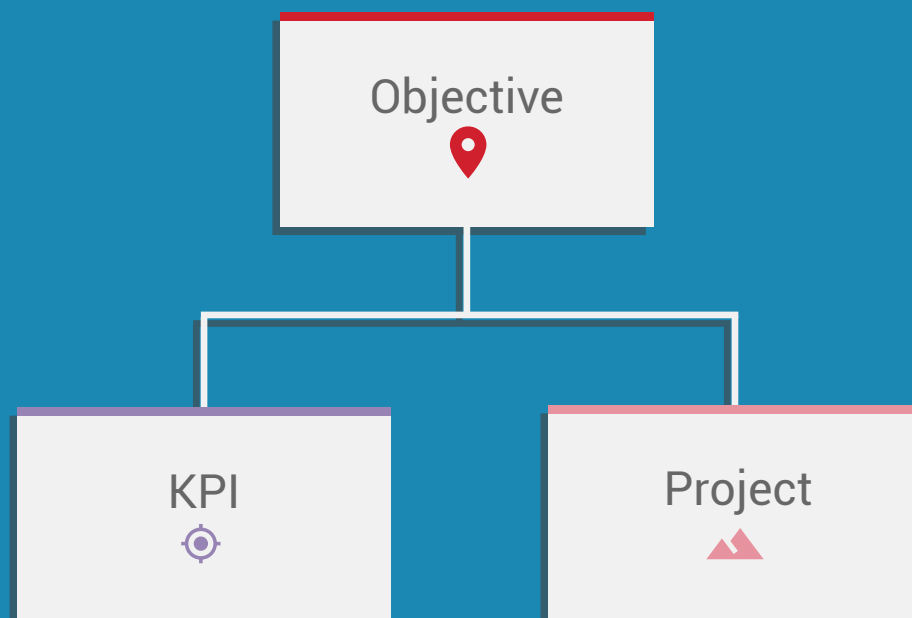


# How Deep Should Your Strategy Go?

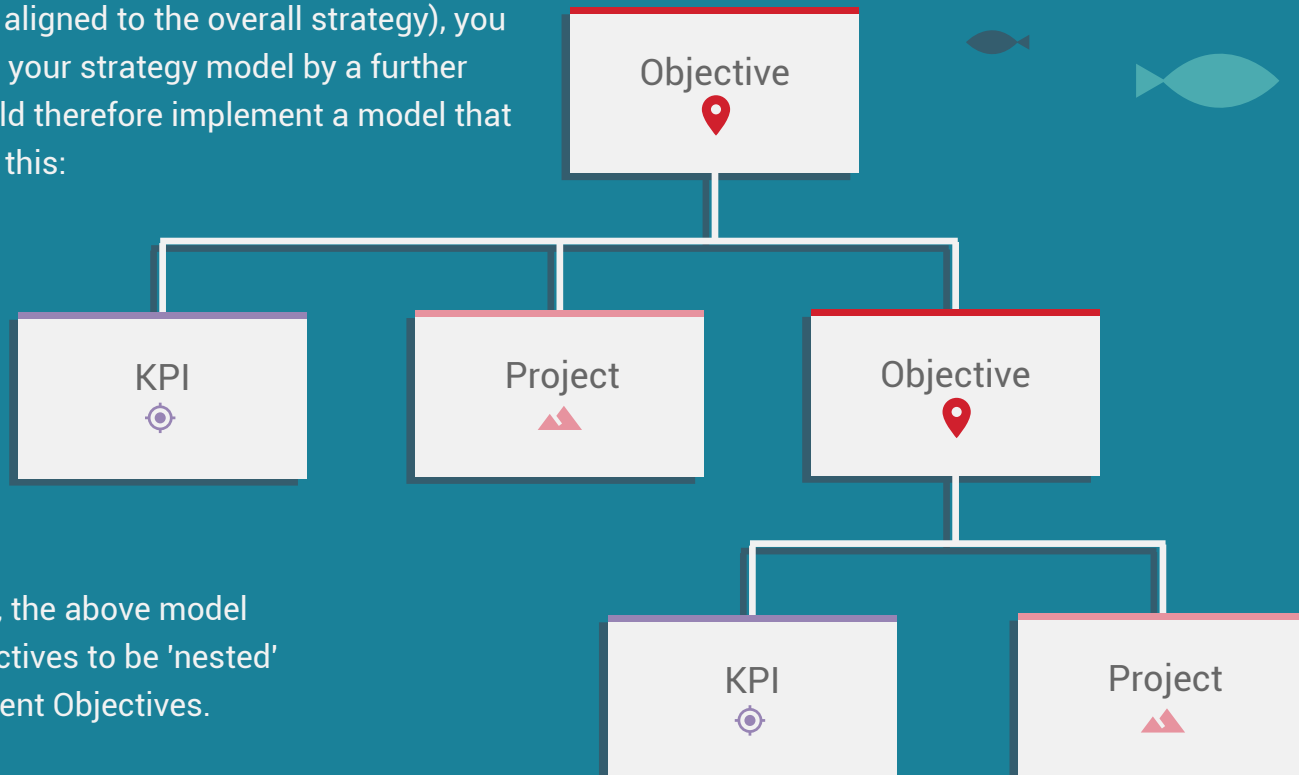
## Small organizations: Fewer than 15 managers

Smaller organizations can pretty much implement the Strategy Model ([see this article](#)). That means a single layer of Objectives (your 'outcomes'), each complimented with a set of Projects (your 'actions') and KPIs (your 'measures'). Round things out with adding Tasks underneath each of your Projects to make them specific.



## Medium organizations: 15 - 50 managers

If you want to allow your different teams to manage their own sets of Objectives that are more specific to them (whilst aligned to the overall strategy), you need to expand your strategy model by a further layer. You should therefore implement a model that looks more like this:

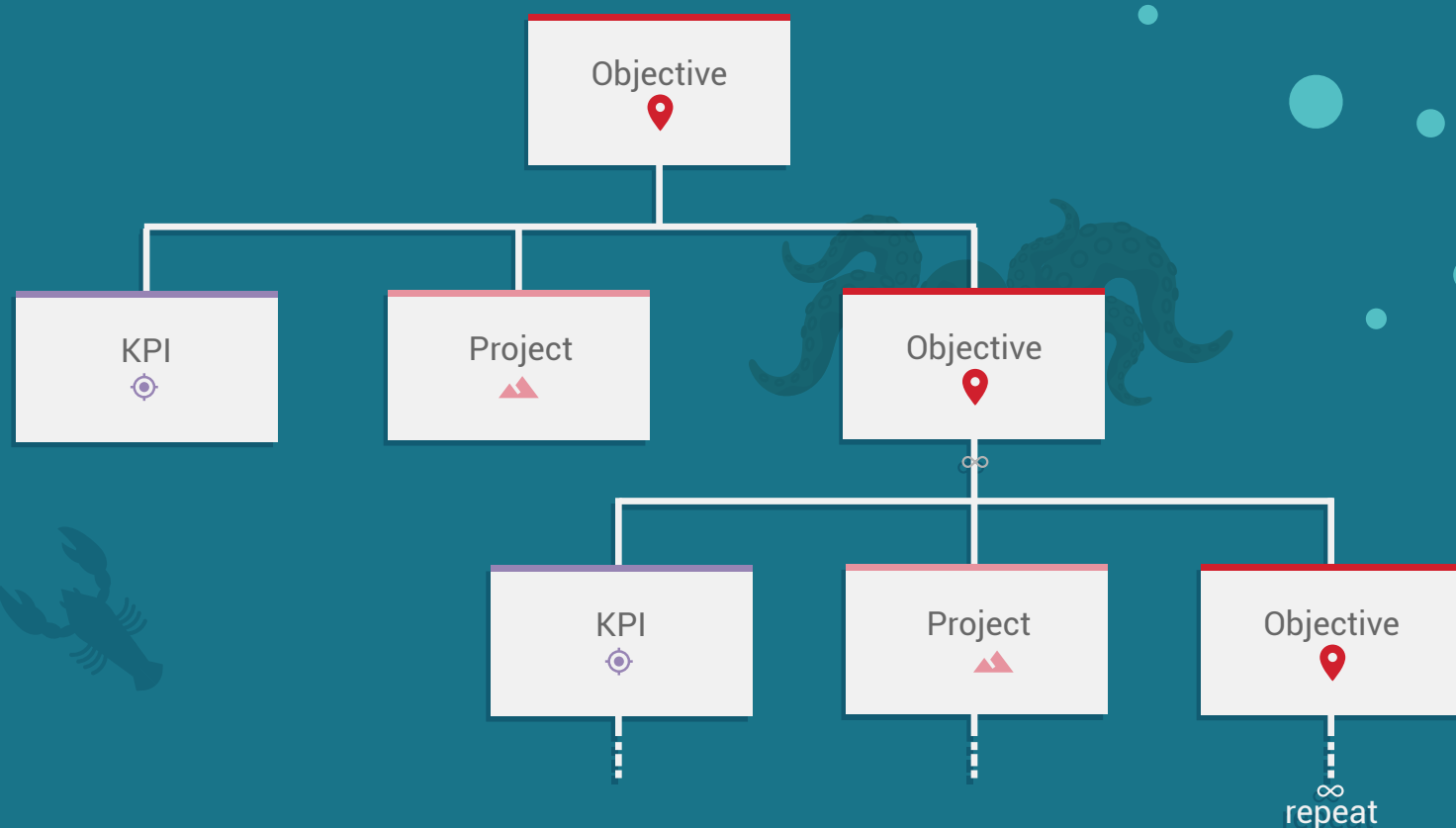


As you can see, the above model allows for Objectives to be 'nested' underneath parent Objectives.

## Large organizations: 50 - 200 managers

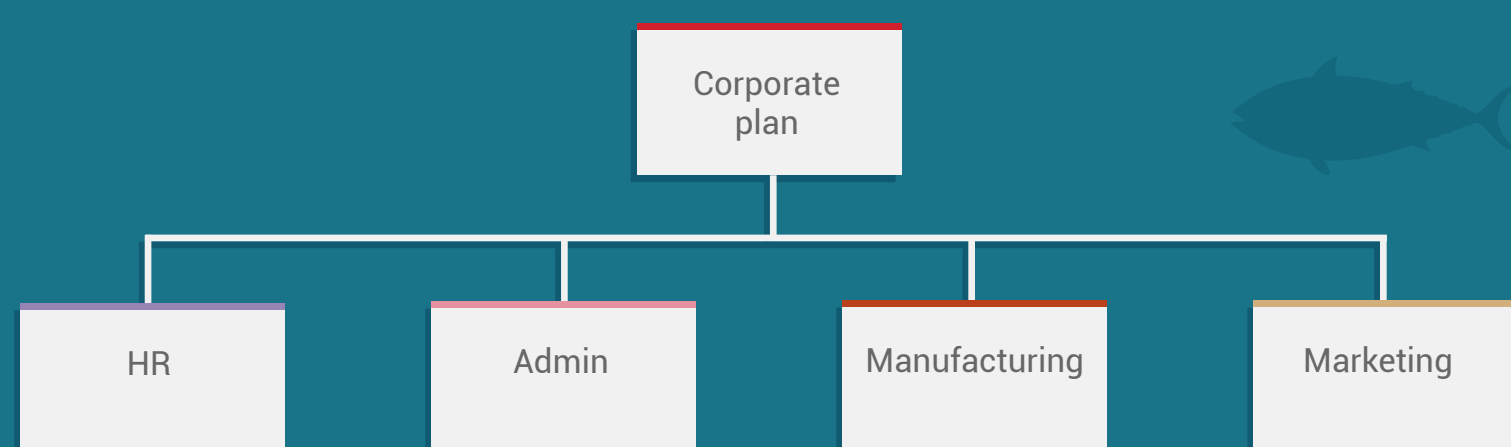
## Option 1 - Layered Strategic Plans

For larger organizations, the fundamentals of our [Strategy Model](#) still apply. We just need it to be flexible yet structured enough to be cohesive and easily understandable for employees at scale. You'll want to change your Strategy Model to allow an unlimited number of levels of Objectives (and associated Projects / KPIs). Note the 'repeats' symbol in the diagram below:



### Option 2 - Multiple Strategic Plans (preferred option)

Larger organizations will almost certainly want to implement multiple strategic plans to make their strategy more digestible. Typically we would recommend aligning your multiple strategic plans with the linked levels of Objectives. So for example, you might implement a hierarchy of strategic plans as follows:



eepppp!  
We've gone  
too deep



### Additional resources:

- Original article
- Writing Strategic Objectives
- Strategy Levels
- Strategic Planning Models
- How to write KPIs

Be sure to reach out to the Cascade team, if you have questions around this topic. We can help you ensure your strategy is well aligned, especially in more complex scenarios, with multiple teams and/or large organizations.

Brought to you by:



EXECUTESTRATEGY.NET