

# CHESTERTON CONNECT™

SIMPLIFIED EQUIPMENT AND PROCESS MONITORING SENSOR



# Safely and Conveniently Monitor

## EARLY DETECTION OF EQUIPMENT AND PROCESS INSTABILITIES

Pressure, vibration, and temperature monitoring is essential for critical rotating equipment. Chesterton Connect™ is an independent 24/7 diagnostic tool that can provide early detection of process and operating instabilities to help troubleshoot rotating equipment. Chesterton Connect makes it easier to safely monitor:

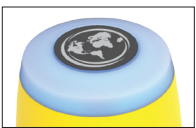
- Equipment vibration
- Process temperature
- Surface temperature
- Process pressure

Easy to install, Chesterton Connect communicates with a user-friendly app that allows you to connect to multiple sensors providing you with a comprehensive view of your plant's equipment health. The app allows you to set equipment parameters limits and input notes for specific events.

The data can be exported for analysis to help you understand your equipment's operation and take preventative actions to extend productivity.

The mobile app and in-unit's LED display system alerts you of undesirable events. This alert system allows you to better allocate resources to avoid unplanned downtime and asset failure.

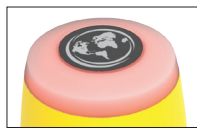
Chesterton  
Connect™



Bluetooth® is connecting



Ready for connection



Problem is detected—check app

### Advantages

- Early detection of process instabilities
- Prioritize equipment maintenance with app and in-unit LED display system alerts
- Easy to install without complicated wiring or diagrams
- User-friendly mobile app
- Securely access your password protected data on the app
- For use on any rotating equipment such as pumps, mixers, gear boxes, motors, and fans

# Your Critical Equipment

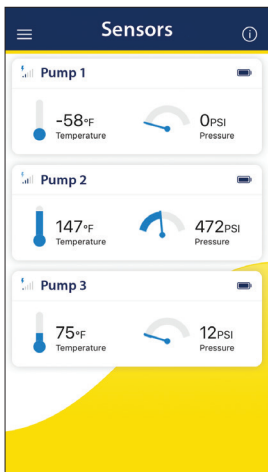
## Simple to use

Chesterton Connect is simple to install and use. Alerts and easy-to-read graphs facilitate interpreting the data.

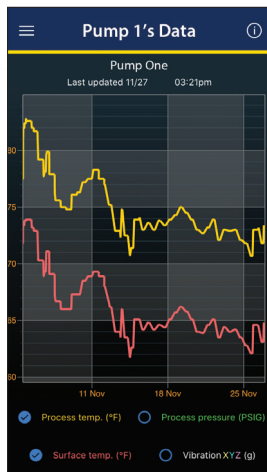
## App key features

- Real-time condition data
- Sensor settings and alert configurations
- Chart sensor historical data (30 days)
- Export sensor data in Excel format
- Multiple sensors supported in one app
- Selectable display units

## Data display views



List view



Graph view

Local Timestamp	Fluid Temp (°F)	Fluid Pressure (PSIG)	Surface Temp (°F)	Min. Vibration X (mm/s)	Max. Vibration (mm/s <sup>2</sup> )
1/26/2019 8:14:00 AM	74.7	-1.1	65.5	8796.57	9120.18
1/26/2019 8:13:00 AM	74.7	-1.1	65.5	8796.57	9120.18
1/26/2019 8:12:00 AM	74.7	-1.1	65.3	8816.18	9071.15
1/26/2019 8:11:00 AM	74.7	-1.1	65.3	9247.67	9463.42
1/26/2019 8:10:00 AM	74.7	-1.1	65.3	9100.57	9630.13
1/26/2019 8:09:00 AM	75.2	-1.1	65.8	9218.25	9463.42
1/26/2019 8:08:00 AM	77.2	-1.1	68.4	9218.25	9463.42
1/26/2019 8:07:00 AM	79.9	-1.1	69.3	9218.25	9463.42
1/26/2019 8:06:00 AM	79.9	-1.1	69.3	8904.44	9718.39
1/26/2019 8:05:00 AM	79.9	-1.1	69.3	9061.34	9698.78
1/25/2019 11:57:00 PM	79.9	-1.1	69.3	8823.98	9659.55
1/25/2019 11:49:00 PM	79.9	-1.1	69.3	9051.54	9630.13
1/25/2019 11:48:00 PM	77.4	-1.1	66.7	9051.54	9630.13
1/25/2019 11:47:00 PM	77.4	-1.1	66.7	8823.98	9787.04
1/25/2019 11:46:00 PM	77.4	-1.1	66.7	9080.96	9649.74
1/25/2019 11:45:00 PM	77.4	-1.1	66.7	8737.34	9698.78
1/25/2019 11:37:00 PM	77.4	-1.1	66.7	8963.28	9757.62

Tabulated view



## HARDWARE TECHNICAL SPECIFICATIONS

### Operating Parameters

Pressure sensor limit	68 bar g (1000 psig)
Temperature limit (body)	-20°C – 85°C (-4°F – 185°F)
Temperature limit (sensor)	-20°C – 125°C (-4°F – 257°F)
Vibration sensor	3-axis accelerometer ±16g
Battery	3.6V lithium thionyl chloride battery (replaceable)
Fitting	1/4" NPT 316SS connection
Mount	Magnetic mounting base (additional mounting options sold separately)
Certifications	FCC, IC, RoHS, IP66, NSF61, ACS, CE

### Software Features

Security	Encrypted setup and password protected operation
Personalization	Configurable name and usage information
Data acquisition	Monitoring mode for extended battery life (5-minute intervals) and high accuracy mode for troubleshooting (1-minute intervals)
Data storage	Up to 30 days of rolling history
Alerts	Configurable thresholds, alerts, and user defined maintenance events
Analytics	Time plotted trends and analysis
Data export	Email export of sensor data and alarms

Product Ordering Number: 403700\*

\*Product does not include mobile device.



## Global Solutions, Local Service

Since its founding in 1884, the A.W. Chesterton Company has successfully met the critical needs of its diverse customer base. Today, as always, customers count on Chesterton solutions to increase equipment reliability, optimize energy consumption, and provide local technical support and service wherever they are in the world.

Chesterton's global capabilities include:

- Servicing plants in over 113 countries
- Global manufacturing operations
- More than 500 Service Centers and Sales Offices worldwide
- Over 1200 trained local Service Specialists and Technicians

Visit our website at [chesterton.com](http://chesterton.com)



Chesterton ISO certificates available on [chesterton.com/corporate/iso](http://chesterton.com/corporate/iso)

Chesterton Connect™ is a trademark of A.W. Chesterton Company. The Bluetooth® word mark and logos are registered trademarks owned by Bluetooth SIG, Inc. and any use of such marks by A.W. Chesterton is under license. Apple, the Apple logo is a trademark of Apple Inc., registered in the U.S. and other countries. App Store is a service mark of Apple Inc. Google Play, the "Android" name, the Android logo, the "Google play" brand, and other Google trademarks, are property of Google LLC.

Technical data reflects results of laboratory tests and is intended to indicate general characteristics only. A.W. Chesterton Company disclaims all warranties express, or implied, including warranties of merchantability and fitness for a particular purpose. Liability, if any, is limited to product replacement only. Any images contained herein are for general illustrative or aesthetic purposes only and are not intended to convey any instructional, safety, handling or usage information or advice respecting any product or equipment. Please refer to relevant Safety Data Sheets, Product Data Sheets, and/or Product Labels for safe use, storage, handling, and disposal of products, or consult with your local Chesterton sales representative.

© 2020 A.W. Chesterton Company.

® Registered trademark owned by A.W. Chesterton Company  
in USA and other countries, unless otherwise noted.

Distributed by:



A.W. Chesterton Company  
860 Salem Street  
Groveland, MA 01834 USA

Telephone: 781-438-7000  
Fax: 978-469-6528  
[chesterton.com](http://chesterton.com)

Form No. EN350655  
Chesterton Connect  
Brochure – English  
01/20