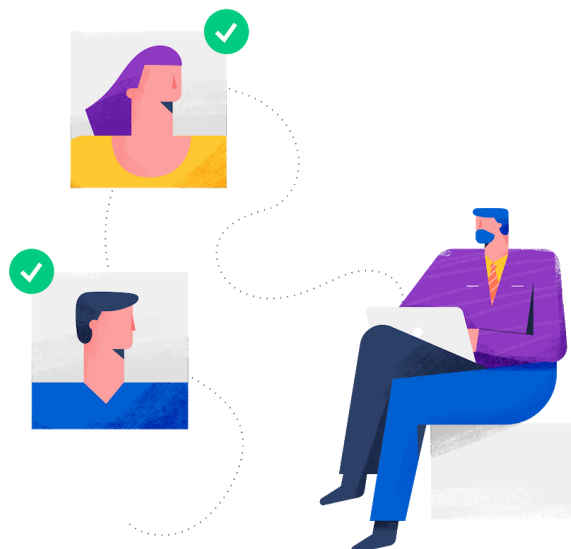




# Identification Easy

We'll come by your workplace and identify you and your colleagues, so that you can use your QES signature in a fast and uncomplicated way.



## The most important questions and answers

### Who is Identification Easy suitable for?

Identification Easy is suitable for companies that want to identify a predefined group of people for the use of QES.

### How does Identification Easy work?

We make an appointment and come by your workplace to identify you and your colleagues in just a few minutes. We use an app-based process by Swisscom (Switzerland) AG:

1. With the use of the app we capture an official ID document, a photo and the mobile phone number from each person to be identified.
2. Swisscom verifies the data and sends a confirmation request to the specified numbers.
3. The persons to be identified confirm the identification on their mobile phones and confirm the GTC – done.

### Where is the data of the identified persons stored?

The data collected is stored on Swisscom's high-security servers in Switzerland (Tier IV certification).

### What does Identification Easy cost?

The one-time identification of a team will be invoiced according to expenses (CHF 120.-/h). On average, 10-15 persons per hour can be identified. At least one hour will be charged.

### What if we need to re-identify?

We will be happy to visit you again for the same conditions if more persons need to be enabled to sign. Please be aware that already identified users' identity must be checked again if their personal data changes (passport/ID renewal, name change due to marriage, new mobile phone number, loss of Mobile ID pin/signing password).

### Do you want to know more about signing?

**We will be happy to advise you free of charge and without obligation.**