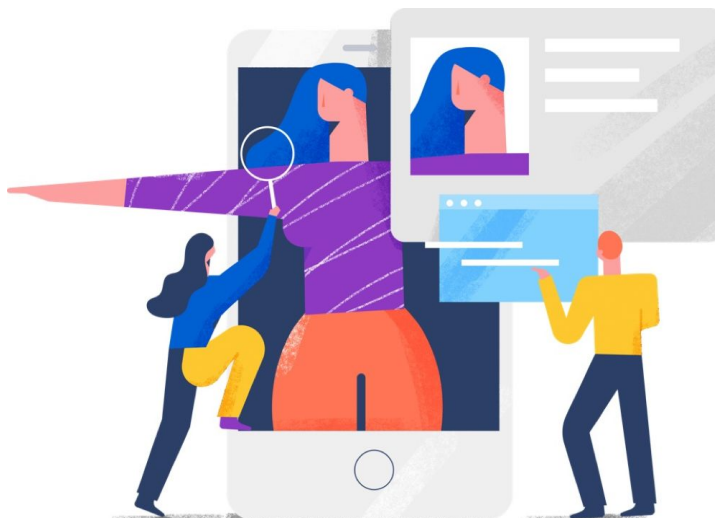




# Identity verification for QES – Skribble makes it easy

The qualified electronic signature (QES) requires the signing party to verify his or her identity. Skribble offers suitable means of identification for every business context.



## Means of identification provided by Skribble

### Verified electronic identity (E-ID)

A growing number of people in Europe holds a verified electronic identity (E-ID). Skribble can be linked with all relevant E-IDs. Thus, millions of users can sign in a qualified manner without additional identity verification. Unlike other signature solutions, Skribble doesn't ask you to stick to a particular E-ID. This way, you remain flexible to future developments in the market.

Please do not hesitate to contact us for more information about connecting E-IDs to Skribble.

### Identification via app

You want to sign in a qualified manner internally or with customers, but not all of you have a compatible E-ID? With Identification Unlimited you can easily identify employees, customers and suppliers and enable them to sign with QES. The ID app by Swisscom enables you to check and record the identity data of signing customers or colleagues independently during personal contact. This enables you to empower people to sign in a qualified manner whenever and wherever you want.



#### Authorised signature partner

The qualified electronic signature is obtained from Swisscom, a provider of electronic certificates recognised by the European eIDAS regulation and the Swiss Signature Act (ZertES).

#### QES » §

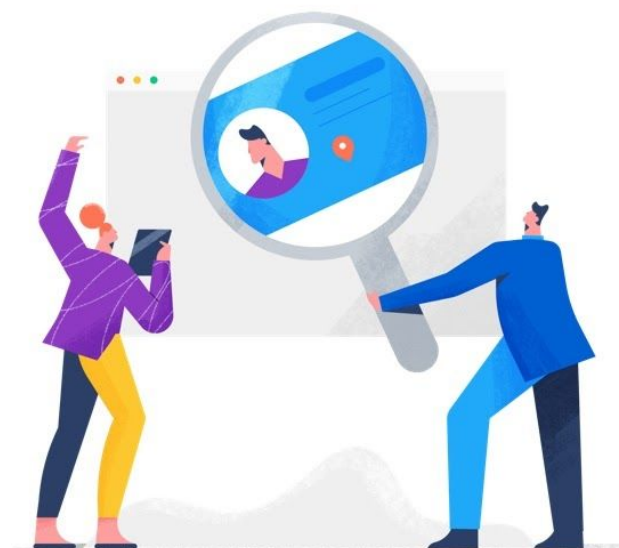
#### Qualified electronic signature (QES)

The QES is equivalent to the handwritten signature according to Swiss and EU law and fulfils the requirement for written form.



# Identification Unlimited

With Identification Unlimited you can enable employees, customers and suppliers to sign with QES by identifying them yourself personally.



## The most important questions and answers

### Who is Identification Unlimited suitable for?

Identification Unlimited is suitable for companies that regularly want to enable new people to sign, be it employees, customers or suppliers.

### What does Identification Unlimited include?

We provide you with Swisscom's ID app for a smooth identification process and enable the required number of employees to use the app (ID officer training). We also coordinate the necessary agreement with Swisscom.

### What is the ID app and how does it work?

The ID app is a solution developed by Swisscom (Switzerland) AG which guides the ID officer through the identification process in just a few minutes:

1. The ID officer uses the app to capture the ID document, a photo and the mobile phone number of the customer or employee to be identified.
2. Swisscom verifies the data and sends a confirmation request to the registered number.
3. The person to be identified confirms on his or her mobile phone and accepts the GTC – done. The app works in all European countries.

### What do I have to do so that my company can use the ID app?

Skribble comes by your workplace and carries out the identification process with the first employees to become ID officers. This is how they are added to the system and get to know the process. In addition, the ID officers complete an online training course (approx. 30 minutes). One or more ID officers are appointed as administrators. In the future, they will appoint the new ID-officers.

### Where is the data of the identified persons stored?

The data collected is stored on Swisscom's high-security servers in Switzerland (Tier IV certification). On request, the data can be stored in your company's own data centre.

### What does Identification Unlimited cost?

Identity verification of signees using the ID app is free of charge. The one-time identification and training of the first ID officers by Skribble as well as onboarding support costs CHF 1,900.

**Want to know more about Skribble? Arrange a free call with one of our experts.**