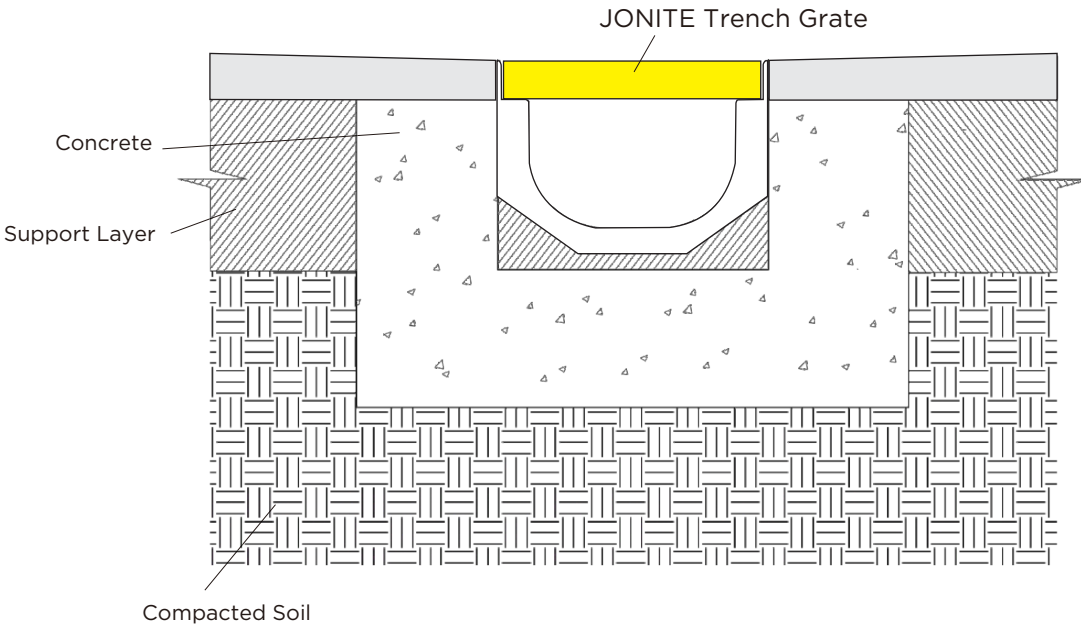
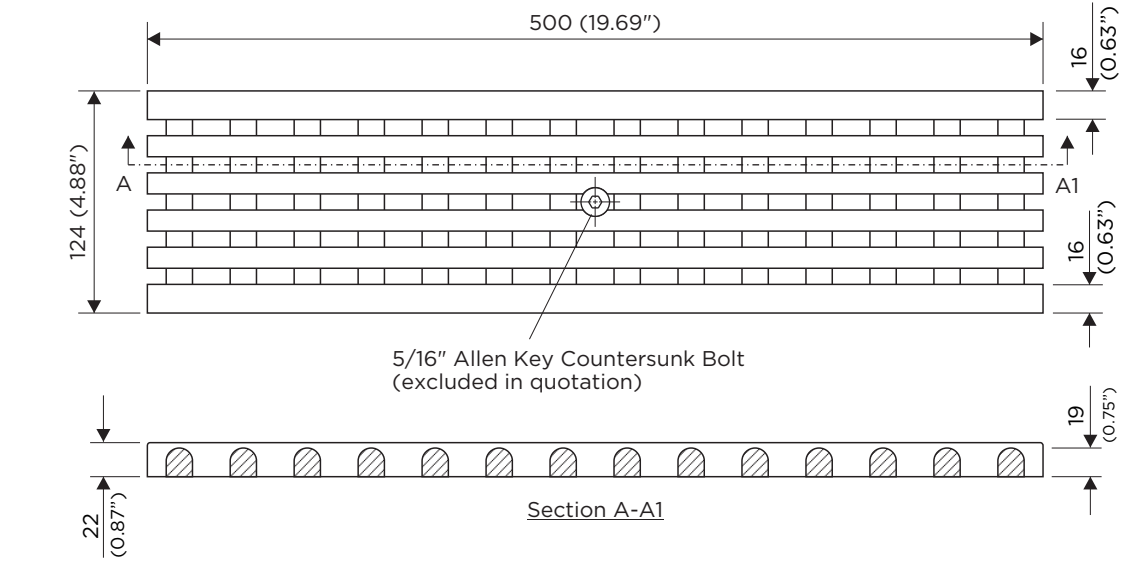


COLLECTION
SLOTTED



TRENCH GRATES

Jonite®

STONE

REINFORCED

SDU32113/1.0/03112014
OVERALL TOLERANCE ALLOWABLE: ± 2mm

U32113	TG-INTERLACE-124
Load Class	A15 (up to 15KN) (Compliant with EN124.1994)(ADA)
Weight	3.6 kg (7.92 lbs)
Overall Size	124W x 500L x 22mm(t) 4.88" x 19.69" x 0.87"(t)
Free Drain Area	16452 mm ² (20.5 in ²)
Application	Strictly for Pedestrian only

- Suitable for:
1. ULMA SELFSYSTEM
 2. ACO KS100S or K100S
 3. MEA SUPREME SV 1000

