

SAP® Planning and Consolidation





What is SAP® Planning and Consolidation?

SAP Planning and Consolidation (BPC) is an important solution of the SAP Enterprise Performance Management (EPM) suite and can help your organization capitalize on the value of your existing data assets. BPC gives you access to reliable corporate data as well as streamlines planning and consolidation processes. It lets you align operational plans with corporate goals, initiatives and metrics defined using the SAP Strategy Management application. You execute to plan, understand risk factors, and have the financial resources budgeted to support all initiatives. This comprehensive approach helps you maximize business profitability and effectively manage risk and compliance – while optimizing corporate systems, people, and processes.

SAP BPC improves productivity by streamlining and aligning bottom-up and top-down planning processes. It can accelerate the financial close, shorten budget cycles, and improve compliance by automating manual processes and enabling complete visibility from budgets to actuals. It provides a unified solution for planning, budgeting, forecasting, and consolidation that is designed to be owned and maintained by finance managers and can fit into any IT landscape.

Business Benefits

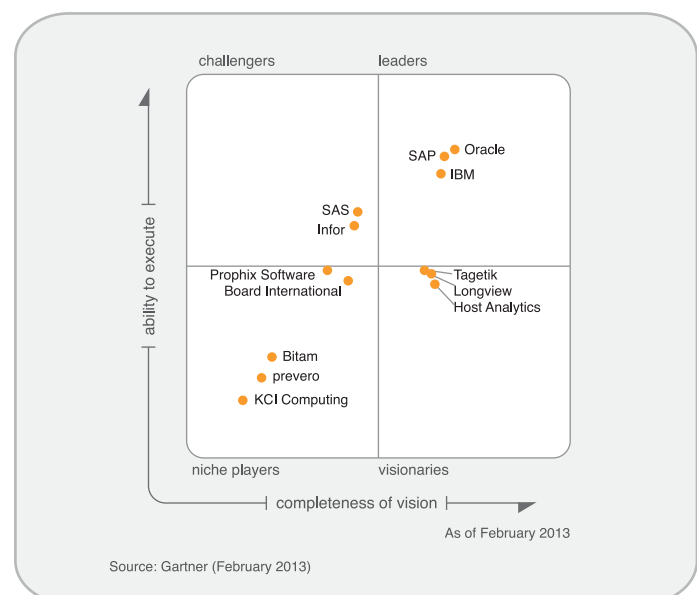
- Reduce cycle time for creating and approving budgets by enabling finance and line-of-business managers to collaborate on aligning budgets.
- Improve planning and forecasting accuracy via a unified, agile solution that supports rapid re-forecasting and standard business processes.
- Empower business users to own and modify common business processes without IT assistance via a solution they can maintain themselves.
- Increase business user productivity with native access to familiar tools such as Microsoft Office.
- Minimize business and compliance risk by enabling transparent financial reporting with a fully documented audit trail from a single data repository.

What does Gartner Say?

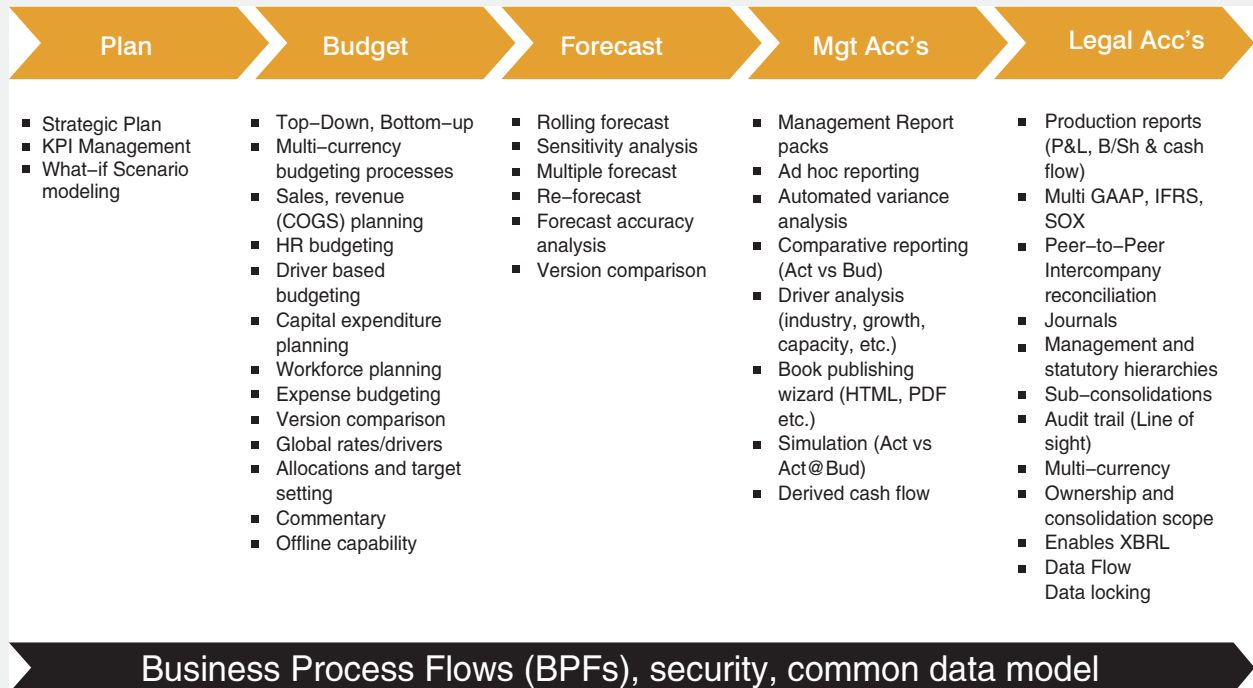
According to Gartner's Magic Quadrant for Corporate Performance Management Suites, SAP now has a broad portfolio of applications through acquisition, and its overall vision is very strong. The key strategic components of SAP Strategy Management, SAP Planning and Consolidation, SAP Profitability and Cost Management, and SAP Financial Consolidation deliver a good breadth and depth of functionality in all areas of CPM.

SAP has an aggressive road map to deliver integration among the various acquired CPM applications in its portfolio and integration with SAP BW and BusinessObjects BI. SAP has already delivered on the initial phases of this road map, with Business Planning and Consolidation (BPC) 10.1 on NetWeaver, bringing functional parity BPC capabilities onto NetWeaver. In keeping with BusinessObjects' traditionally heterogeneous strategy, the CPM products can be purchased and deployed without the need for the SAP NetWeaver/BI/BW stack.

Magic Quadrant for Corporate Performance Management Suites



Unified Solution for Budgeting, Forecasting, Planning and Financial Consolidation



Allocations

SAP Business Planning and Consolidation delivers powerful allocation capabilities, providing a variety of methods and a very flexible way of defining allocations.

- Allocate amounts based on user defined allocation rules:
 - Select different methods
 - Define mappings
- Execute allocations in an on-demand manner or with every data entry point (real time allocations)

The screenshot displays the SAP BPC interface for defining allocation rules. It shows a table with columns for 'Account', 'Product', 'Time', and 'Value'. The 'Time' column is split into 'Qtr 2012', 'Jul 2012', 'Aug 2012', and 'Sep 2012'. The 'Value' column shows numerical data for each time period. The interface includes a 'Save Data' button and a 'Comments' field.

Forecasting

Create forecasts with flexibility

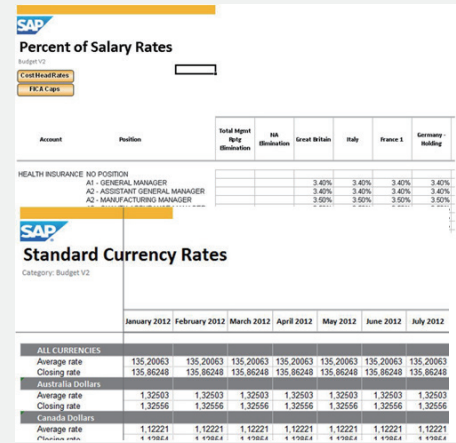
- Update baseline plans with latest actual numbers and inclusion of future state numbers
- Compare multiple sets of data (e.g. actuals, plan, forecast versions, budget, strategic plan)
- Create rolling forecasts that set constant time horizons into the future
- Leverage rolling forecasts to automatically split current year between actual and forecast and automatically update all reports as time progresses

The screenshot displays the SAP BPC interface for forecasting. It shows a table with columns for 'Account', 'Product', 'Time', and 'Value'. The 'Time' column is split into 'Qtr 2012', 'Jul 2012', 'Aug 2012', and 'Sep 2012'. The 'Value' column shows numerical data for each time period. The interface includes a 'Save Data' button and a 'Comments' field.

Driver Based Planning

Store multiple sets of assumptions and establish “Driver Formulas”

- Load drivers such as Currency Rates, Costs, Volumes and Prices
- Integrate drivers directly from source system (e.g. ECC, BW) through integrated data and master data models
- Maintain Driver Formulas through user defined Business Rules
- Calculate Formulas on-demand or real-time



Percent of Salary Rates

Account	Position	Total Input Rate	Rate	Rate	Rate	Rate	Rate
HEALTH INSURANCE NO POSITION							
A1 - GENERAL MANAGER			3.40%	3.40%	3.40%	3.40%	3.40%
A2 - ASSISTANT GENERAL MANAGER			3.40%	3.40%	3.40%	3.40%	3.40%
A2 - MANUFACTURING MANAGER			3.50%	3.50%	3.50%	3.50%	3.50%

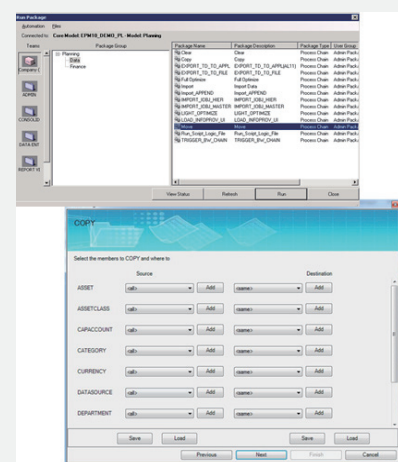
Standard Currency Rates

	January 2012	February 2012	March 2012	April 2012	May 2012	June 2012	July 2012
ALL CURRENCIES							
Average rate	135.20063	135.20063	135.20063	135.20063	135.20063	135.20063	135.20063
Closing rate	135.86248	135.86248	135.86248	135.86248	135.86248	135.86248	135.86248
Australian Dollars							
Average rate	1.32503	1.32503	1.32503	1.32503	1.32503	1.32503	1.32503
Closing rate	1.32556	1.32556	1.32556	1.32556	1.32556	1.32556	1.32556
Canada Dollars							
Average rate	1.12221	1.12221	1.12221	1.12221	1.12221	1.12221	1.12221
Closing rate	1.12221	1.12221	1.12221	1.12221	1.12221	1.12221	1.12221

What If Analysis, Seeding & Modelling

Ability to move data between Scenarios for “unofficial” analysis

- Move data from Source to Destination as needed
- Take your data from Actuals / Forecasts / Budgets and seed into your current scenario to avoid Zero Based Budgeting
- Creating new versions is very easy in BPC. Users/administrators, with appropriate security, can utilize a Data Manager Package to walk through the process. New versions can be seeded based on existing versions.



Mobile Performance Management

Leverage mobile solutions including SAP BusinessObjects Mobile and Sybase Unwired Platform

SAP EPM Unwired mobile client as entry point into SAP solutions for EPM 10.0:

- Next-generation user experience on the iPad
- Complementary SAP solutions for EPM 10.0
- Hybrid support for on-premise and on-demand scenarios that are seamless to the end-user



Why MDS ap ?

MDS *ap* is a professional service provider of Enterprise Performance Management and Group Finance. Our area of work spans from Strategic Finance, Planning Budgeting and Forecasting, Management Reporting, Analytics, Business Intelligence to Financial Consolidation and Legal Entity Management. Furthermore, we provide automated creation of filings, including annual/quarterly reports and board books with fully incorporated XBRL tagging.

The combination of EPM knowledge and the passion for quality enables our certified consultants to translate the customer's requirement into optimized business processes using the latest information technology.



Abu Dhabi - UAE

Office No. 021, Gibca Building, Khalifa Street
PO. Box 45652, Abu Dhabi
Tel: +971 2 6275911

Kuwait City - Kuwait

Dar Al-Awadh Mall - 2nd floor / IO Center
Ahmed Al Jaber Street - Sharq
PO. Box 29927 - Safat 13160
Tel: +965 2232 2926

Prague - Czech Republic

V Parku 2326/18
148 00 Praha 4 Chodov
Tel: +420 2840 00711

Dubai - UAE

Suite 358, Building 17, Dubai Internet City
PO. Box 62631, Dubai
Tel: +971 4 3914391

Beirut - Lebanon

Berytech Technological Pole - ESIB-Mar Roukoz
PO. Box 116 - 5004 - Beirut
Tel: +961 4533 162

Warsaw - Poland

ul. Woloska 5 Taurus Building
02-675 Warszawa
Tel: +48 2221 25429

Doha - Qatar

MDS Building - C'Ring Road
PO. Box 4558, Doha
Tel: +974 4467 7311

Istanbul - Turkey

Nurol Plaza, Buyukdere Cad. No:257 Kat:12
34398 Maslak, Istanbul
Tel: +90 212 3512730

Budapest - Hungary

Záhony u. 7., Graphisoft Park C Building
1031 Budapest
Tel: +361 4303 500

Riyadh - Saudi Arabia

Al Anouf Building - Malaz - 1st Floor, Al Ihsa'a St.
PO. Box 295903 - Riyadh 11351
Tel: +966 1 479 7623

Ankara - Turkey

Bilkent Plaza A-3 Blok
No:48 Bilkent - Ankara
Tel: +90 312 266 33 00

Bratislava - Slovakia

Apollo Business Center II, Block C
Prievozská 4B
821 09 Bratislava
Tel: +421 2323 32501

For more information about MDS ap please contact our local offices
or email us at: epm@mdsaptech.com