



CORPORATE **PROFILE**

- Enterprise Architecture
- Data Management and Processing
- Business Intelligence and Analytics
- Enterprise Performance Management
- Omnichannel Banking
- Human Capital Management
- Customer Engagement and Commerce
- Big Data
- Customer Relationship Management
- Strategic Sourcing and Procurement

ABOUT MDS *ap*

MDS *ap* helps you run business better leveraging technologies from SAP and complementary solution providers. We deliver high quality professional services implementing world-class integrated solutions including Enterprise Architecture, Data Management and Processing, Analytics, Enterprise Performance Management, Omnichannel Banking, Human Capital Management, Customer Engagement and Commerce as well as Strategic Sourcing and Procurement.

With over twenty-five years of experience supporting enterprise customers across the Middle East, North Africa, Turkey and Eastern Europe regions, we are uniquely equipped to help you maximize the ROI on your SAP investment and fully leverage other best-of-breed industry solutions.

MDS *ap* is a Gold Partner of SAP and is part of the MIDIS Group. We have twelve offices across the Middle East, North Africa, Turkey and Central Eastern Europe with locally based consultants. For more information about us, please visit: www.mdsaptech.com.

PART OF MIDIS GROUP

With more than 5,000 professionals, over 50 of the world's leading IT suppliers, and a solid 50-year track record of performance and reliability, the Midis Group is an international organization comprised of over 150 companies across the emerging markets of Europe, the Middle East & Africa.

The group is known for its advanced offering of ICT services and consultancy, system integration capabilities, software and hardware solutions, and distribution coverage, along with Data Center capabilities, IT infrastructure and power solutions.

The Midis Group was named in 2006 as one of the World Economic Forum's initial 100 Global Growth Companies.

The group focuses on providing the best in services, with integrity, to vendors, partners, and customers across the destinations it serves.

For more information please visit: www.midisgroup.com.



MIDDLE EAST

UNITED ARAB EMIRATES

- Abu Dhabi Islamic Bank
- Abu Dhabi Department of Education and Knowledge
- Abu Dhabi Department of Urban Planning and Municipalities
- Abdul Latif Jameel
- Commercial Bank of Dubai
- Dubai Economic Department
- Federal Authority for Identity and Citizenship
- Emirates NBD
- First Abu Dhabi Bank
- Habib Bank AG Zurich
- Ministry of Human Resources and Emiratisation
- Roads and Transport Authority
- Rotana Hotels Corporation
- Union National Bank

KUWAIT

- Boubayan Bank
- EQUATE Petrochemical Company
- Kuwait Credit Bank
- Kuwait International Bank
- National Bank of Kuwait

OMAN

- Ahli Bank
- Bank Dhofar
- Bank Nizwa

SAUDI ARABIA

- Al Faisaliah Group
- Alinma Bank
- Arab National Bank
- Abdul Latif Jameel Motors
- ARASCO
- Bank al Ahli
- Banque Saudi Fransi
- Islamic University
- King Fahad Medical City
- Olayan Financing Company
- SAMBA Financial Group
- Saudi Arabian Monetary Authority

REST OF MIDDLE EAST

- Ahli United Bank (Bahrain)
- Arab Bank (Jordan)
- Bank of Beirut
- Bahrain Islamic Bank
- Habib Bank (Pakistan)
- Khaleeji Commercial Bank (Bahrain)
- Qatar Islamic Bank

OUR CUSTOMERS

CENTRAL EUROPE

POLAND

- ING Group
- mBank (Regional)
- Ministry of Finance
- Ministry of Justice
- Orange/TPSA
- PGNiG & PSG
- PKO BP
- Polkomtel
- SKOK's
- Tauron

SLOVAKIA

- Poštová Banka
- Tatra Banka
- VUB Bank

CZECH REPUBLIC

- Česká pošta
- DHL Deutsche Post
- KBC Group (regional)
- Komerční Banka
- KUPEG Insurance
- Raiffeisenbank

AUSTRIA

- ERSTE Group (Regional)
- Vienna Insurance Group
- ZAMG (Meteo)

HUNGARY

- MNB Central Bank
- OTP Bank

TURKEY

- Akbank
- Anadolu Bank
- Bilyoner.com
- General Directorate of National Estate
- Gulf Insurance
- Halk Hayat Pension and Life Insurance
- Halk Insurance
- IETT
- ING Bank
- İş Investment
- KKB (Credit Bureau)
- Ministry of Finance
- Presidency of Tax Inspection Board
- PTT - National Post and Telegraph Directorate
- TOFAŞ
- Turkish Energy Exchange
- Türkiye İş Bankası
- Turkish Grain Board
- Union of Municipalities of Turkey
- Turkish State Meteorological Service
- Union of Municipalities of Turkey



OUR SOLUTIONS

PRACTICES OVERVIEW

ENTERPRISE ARCHITECTURE

- Metadata Management
- Modelling Methodology Implementation
- CASE Tool Deployment
- Enterprise Architecture Methodologies & Frameworks
- Impact and Lineage Analysis
- Data Governance

ENTERPRISE PERFORMANCE MANAGEMENT

- Strategy Management & Balanced Scorecards
- Budgeting, Planning and Forecasting
- Group Intercompany Reconciliations & Financial Consolidations
- Group Financial Reporting and Disclosures

CUSTOMER ENGAGEMENT AND COMMERCE

- E-Marketing
- E-Commerce
- CRM

HUMAN CAPITAL MANAGEMENT

- Recruiting
- Onboarding
- Workforce Planning
- Compensation
- Learning
- Performance and Goals
- Succession Planning

ANALYTICS

- Business Intelligence Platform
- Data Visualization and Analysis
- Dashboards
- Mobile Analytics
- Reporting
- Predictive Data Modelling
- Predictive Data Management
- Model Management
- Scoring
- Predictive Network and Link Analysis
- Industry Specific Data Marts
- Big Data

DATA MANAGEMENT & PROCESSING

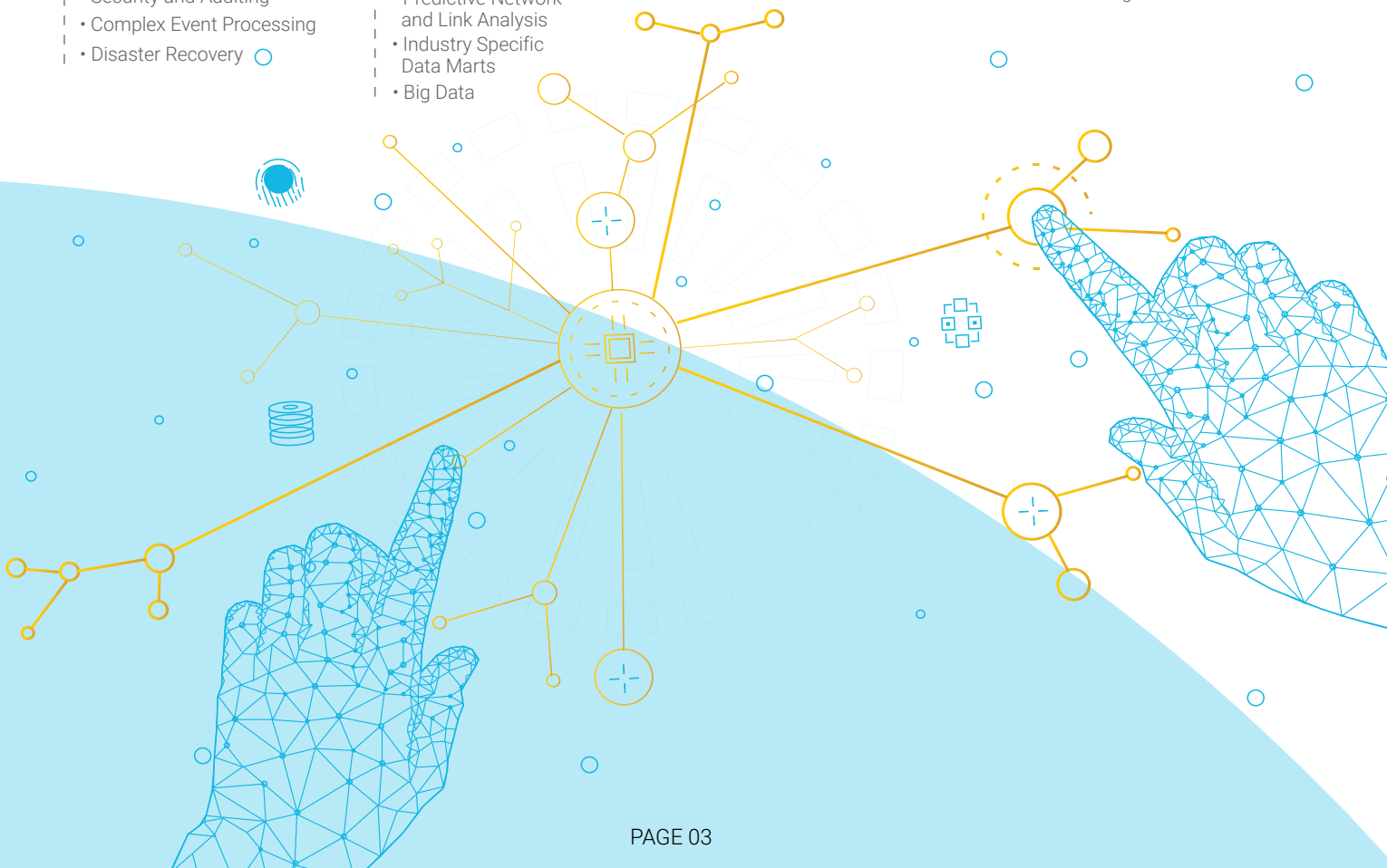
- Data Integration and Transformation
- Data Quality
- Data Archiving
- Security and Auditing
- Complex Event Processing
- Disaster Recovery

OMNICHANNEL BANKING

- Retail Internet Banking
- Corporate Internet Banking
- Mobile Banking
- Omnichannel Banking

SOURCING AND PROCUREMENT

- Supplier Management
- Strategic Sourcing
- Supply Chain Collaboration
- Procurement
- Contract Lifecycle Management



OUR PRODUCTS, SOLUTIONS AND SERVICES

ENTERPRISE ARCHITECTURE

Product

- SAP PowerDesigner

Solutions

- Enterprise and information systems architecture modelling, including business processes, application and data modelling
- Metadata management and publication
- Modelling methodologies
- Data and business dictionary
- Data assessment
- Support of Zachman Framework, TOGAF
- Data governance

Services

- Documentation of source systems and DWH DBs
- AS-IS architecture description and TO-BE architecture proposal + transformation path advisory
- Metadata import into data models
- Assisted upgrade of PowerDesigner models
- Integration of data and business dictionary into data models
- Introduction and implementation of modelling methodology into PowerDesigner
- Management of requirements and logging of changes in PowerDesigner models
- Implementation of DWH accelerator
- PowerDesigner customization to fit client needs
- Knowledge transfer workshops and trainings

ENTERPRISE PERFORMANCE MANAGEMENT

Products

- SAP Strategy Management (SSM)
- SAP Business Planning & Consolidation (BPC)
- SAP Business Financial Consolidation (BFC)
- SAP Disclosure Management

Services

- EPM assessment
- Business case building including ROI projections, date of payback period, cost savings and cash flow impact
- Requirements gathering and gap analysis with existing landscape
- Design and solution roadmap
- Realization, testing and knowledge transfer
- EPM Academy in-depth training
- Support
- Training on fast close: certificate in fast closing monthly and year end accounts

DATA MANAGEMENT AND PROCESSING

Products

- SAP ASE
- SAP Replication Server
- SAP SQL Anywhere
- Big Data Hadoop Data Lake
- Bradmark Technologies
- SAP Complex Event Processing
- SAP Data Services
- SAP Data Integrator
- SAP Data Quality Management
- SAP Information Steward

Services

- DB servers, replication systems tuning
- Regular database systems prophylaxis
- Building disaster recovery solution
- SQL code optimization
- Monitoring (what, how, why and suggest actions)
- Data security and auditing
- Data integration from heterogeneous systems
- Design of the appropriate architecture
- Design of ETL transformations and jobs
- Monitoring ETL processes
- Data quality and data enrichment
- Data governance and compliance

ANALYTICS

Products

- SAP BusinessObjects Enterprise
- SAP Predictive Analytics
- RapidDecision
- Banking Analytics
- Industry Specific Data Marts
- Regulatory Reporting (Central bank reports)
- SAP Governance, Risk and Compliance (GRC)
- SAP HANA
- SAP IQ
- SAP Replication Server
- SAP Data Services / Data Integrator
- Metadata Dictionary
- Big Data

Services

- Real-time reporting and analytics
- Predictive analysis and visualization
- Complete consulting services, solution implementation and on-going business support
- Products infrastructure review and setup services
- Business reports, data visualization and discovery, executive dashboards, mobile BI
- Pre-built analytics and reporting on top of the most common ERP systems in the market
- Pre-built analytics and reporting on top of the most common core banking applications in the market
- Pre-built central bank reporting automation application
- Project management by PRINCE2 methodology
- Business analysis of needs
- Design, implementation and support of DWH model, transformations, BI solution architecture, reports and dashboards
- Solution tuning
- Ongoing business support including technical and application support
- Managed services

OMNICHANNEL BANKING

Product

- Veloxap Digital Customer Engagement
- SAP Digital Banking Omnichannel Platform
 - SAP Digital Retail Omnichannel
 - SAP Digital Corporate Omnichannel
 - SAP Personal Finance Management
- S4 / HANA Finance Suite (Banking / Corporate)
 - SAP Transactional Banking Service (Virtual Account)
 - SAP Cash Management
 - SAP Liquidity Planner Management
 - SAP Treasury & Risk Management
 - SAP Term Deposit
 - SAP Receivable Management
 - SAP Collateral

Services

- MDS *ap* Extended Banking Service
 - MDS *ap* Digital Mobile Banking
 - MDS *ap* Digital Customer Engagement
 - MDS *ap* Trade Finance
 - MDS *ap* Host-to-Host
 - MDS *ap* Global Bank View
 - Global Bank CIF
 - Global Bank Fund Movement
- Readiness assessment
- Requirements gathering and gap analysis with existing landscape
- Design and solution roadmap
- Realization, testing and knowledge transfer
- Training and support
- Managed services

HUMAN CAPITAL MANAGEMENT

Product

- SAP Success Factors HCM

Solutions

- Core HR and Payroll
- Time and Attendance Management
- Learning and Development
- Performance and Compensation
- Recruitment and Onboarding
- Workforce Planning and Analytics

Services

- Readiness assessment
- Requirements gathering and gap analysis with existing landscape
- Design and solution roadmap
- Realization, testing and knowledge transfer
- Training and support
- Managed services

SOURCING AND CONTRACT LIFECYCLE MANAGEMENT

Product

- SAP Ariba

Solutions

- Supplier Relationship Management
- Sourcing Management
- Buying Management
- Contract Lifecycle Management
- Supply Chain Collaboration
- Invoice Management
- Spend Analysis
- Catalogue

Services

- Readiness assessment
- Requirements gathering and gap analysis with existing landscape
- Design and solution roadmap
- Realization, testing and knowledge transfer
- Training and support
- Managed services

CUSTOMER ENGAGEMENT AND COMMERCE

Products

- SAP Hybris for Commerce
- SAP Hybris for Marketing

Solutions

- Real Time Contextual Marketing
- Financial Accelerator
- Insurance Accelerator
- SAP Loyalty

Services

- Readiness assessment
- Requirements gathering and gap analysis with existing landscape
- Design and solution roadmap
- Realization, testing and knowledge transfer
- Training and support
- Managed services

OUR SUPPORT SERVICES

MDS *ap* provides 24x7 local support through our call centre, online incident management portal and through our local services teams. These support offerings are currently serving over 300 customers including around 75 banks and large enterprises. More than 1,000 incidents were resolved each year within the defined SLAs. Extended Services can be bundled within existing support agreement to ensure premium and enterprise level service are suited to your current business needs. More details about our support services can be found under the support section of our website www.mdsaptech.com.

All of our solutions and services offerings are built on long-standing experience supporting enterprise-critical applications. With 24 years of close engagement with customers, we have developed and are continuously improving tools, processes, and methodologies to best serve our customers.

OUR PARTNERS



SAP is the world's largest provider of enterprise application software SAP serving over 350,000 customers in more than 180 countries. SAP helps companies of all sizes and industries run better. From back office to boardroom, warehouse to storefront, desktop to mobile device – SAP empowers people and organizations to work together more efficiently and use business insight more effectively to stay ahead of the competition. MDS ap is a Gold Partner of SAP.



BRADMARK TECHNOLOGIES

Bradmark Technologies provides industry leading database management solutions and services to empower IT organizations worldwide that demand high availability and high-performance systems. Its flagship solution, Surveillance DB™ offers a comprehensive family of database management tools for SAP-Sybase, MS SQL Server, Oracle and DB2-UDB databases - running on UNIX, Linux and Windows OS environments.



COLUMN5 CONSULTING

Column5 is the world's leading-edge consulting firm providing high-value services helping customers leverage the power of SAP's Enterprise Performance Management (EPM) product suite. Column5's tailored solutions combine proven software with unparalleled technical skills and visionary EPM process expertise to deliver prompt return on investment, long-term independence and competitive edge for an elite list of discerning clients.



EPM INTERNATIONAL

EPM International is a leading provider of full life cycle services for Enterprise Performance Management. Its services range from defining leading edge EPM processes and an associated roadmap through to project management, implementation and application management services. MDS ap is a full member of EPM International and has full access to the organization's global resources.



Loxon offers integrated lending and risk management solutions for the financial services industry. Loxon is dedicated to serve banks and leasing companies with the most complete software suite covering the entire lending and risk management life-cycle.



PATH SOLUTIONS

Path Solutions is a leading information technology solutions provider offering a broad, deep spectrum of Sharia-compliant, Riba-free and asset-backed integrated software solutions and services to the Islamic financial marketplace, covering the entire range of Islamic Banking, Retail and Corporate Banking, Investment and Financing, Treasury, Asset Management, Risk Management, and Regulatory Reporting in GCC and Global Capital Markets.



PIO-TECH

Pio-Tech is a system integrator and business solutions provider with comprehensive business expertise in the banking and financial industries. Its BI solutions help customers summon answers to the challenging needs of today's banking industry; its customer service management solution comprises a set of pre-packaged ready-to-go products, revolutionizing technology, know-how and consulting.

**ABU DHABI - UAE**

32nd Floor, Addax Tower, Al Reem Island
P.O. Box 45652, Abu Dhabi
Tel: +971 2 6275911

**DOHA - QATAR**

D-Ring Road (next to Doha Bank)
Old airport area, P.O.Box 22421, Doha
Tel: +974 44405 000

**DUBAI - UAE**

Office 358, Building 17, Dubai Internet City
P.O. Box 62631, Dubai
Tel: +971 4 3914391

**RIYADH - SAUDI ARABIA**

Unit No 5, 6601 Fatimah Az Zahra St.
Ar Rabwah Dist. Riyadh 12815 - 3632
Tel: +966 11 2932822

**KUWAIT CITY - KUWAIT**

Dar Al-Awadh Mall - 2nd floor / IO Center
Ahmed Al Jaber Street - Sharq
P.O. Box 29927 - Safat 13160
Tel: +965 2232 2926

**BEIRUT - LEBANON**

3rd floor, Holcom Building 460,
Corniche Al Nahr, Beirut

**ISTANBUL - TURKEY**

Nurul Plaza, Buyukdere Cad. No:255-1202 Kat:12
34485 Maslak, Istanbul
Tel: +90 212 351 2730

**WARSAW - POLAND**

ul. Woloska 5, Taurus Building
02-675 Warszawa
Tel: +48 2221 25428

**ANKARA - TURKEY**

Bilkent Plaza A-3 Blok No:48 Bilkent - Ankara
Tel: +90 312 266 3300

**PRAGUE - CZECH REPUBLIC**

V Parku 2326/18
148 00 Praha 4 Chodov
Tel: +420 2840 00711

For more information please visit us at: www.mdsaptech.com



MDS ap
Your Partner in Digital Transformation



Part of the Midis Group