

Warehouse Management System (WMS)

Connect. Inspire. Achieve.

Visibility 2016.



Contents

Introduction	3
WMS Features	4
Available Transactions	5
Product Tour	6
WMS Benefits	8
Conclusion	9



Chapter 1

Introduction

The Issue:

In an Engineer-to-Order environment highly engineered products involve significant input from both shop floor and office-based resources. Once a project is underway, accurate monitoring of all the costs involved is essential. Visibility Project Accounting provides superior facilities for monitoring actual cost against budget. By collecting data on the shop floor via barcode scan entry, reliability and speed are greatly enhanced. WMS links the warehouse and shop floor to the VISIBILITY.net ERP system, and empowers manufacturing employees.



The Solution:

WMS is a real-time web application that enables shop floor transactions to be run on almost any handheld device. Users will have the ability to use a wireless barcode scanner to execute various transactions including;

warehouse and location transfers, cycle counts, physical inventory, purchase receipts, material request fulfillment, work order moves and paperless Kanban. WMS is made easy with on screen prompts, automatically populated data, and preprinted bar codes, which eliminate manual data entry.

Our WMS eBook will walk you through everything you need to know about VISIBILITY.net's WMS solution from available transactions to a detailed product tour to all of the WMS benefits you are missing out on if you have yet to implement this module.



- Mobile Inventory Data Collection
- Improve Inventory Accuracy and Collection Efficiency
- Provide Bar Code Scanning for Major Transactions
- Provide Touch Screen “Kiosk” Style User Experience
- Generate Custom Product Labels
- Real Time Capture of Movement and Labor
- Hardware Independent (Symbol, Intermec, RFID)

Chapter 2 WMS Features

WMS for VISIBILITY.net offers a sophisticated solution for recording inventory locations, movements, and labor in real-time from a handheld device on the shop floor. In today’s world, manufacturing companies must operate flawlessly to achieve maximum production and efficiency.

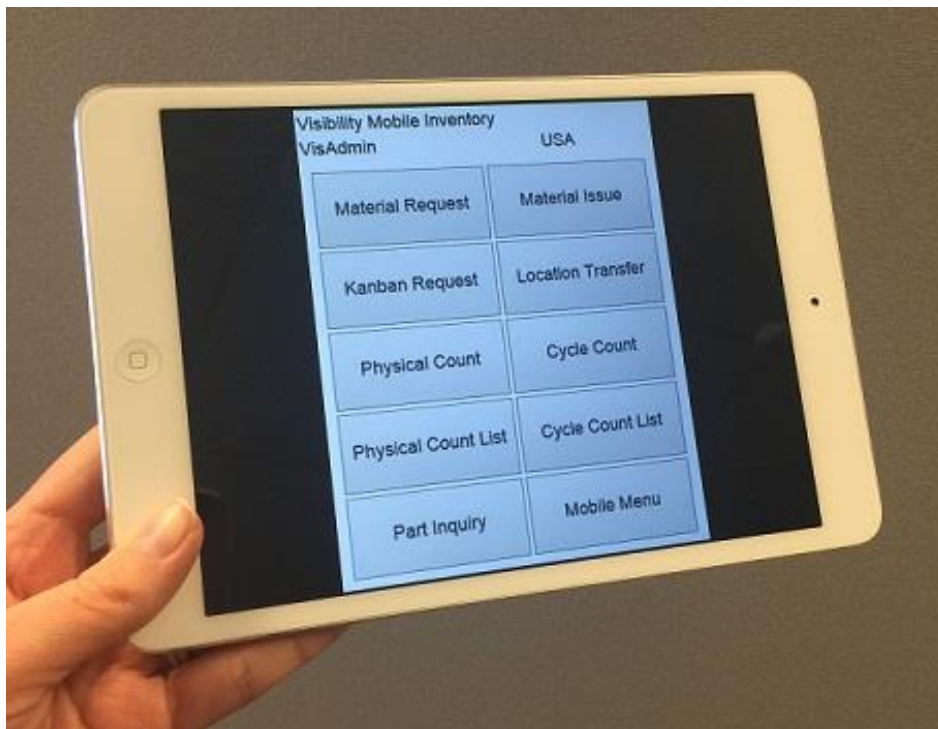
Now, there is no need to head back to the office to manually enter transactions into your desktop. Simply scan bar coded transactions from the warehouse’s mobile device and your data is entered into Visibility in real time.

Chapter 3 Available Transactions

- Incoming Receiving
- Inspection Results
- Warehouse Transfer
- Location Transfer
- Move Ticket
- Labor Ticket
- Cycle Count
- Physical Inventory
- Material Request
- Inventory Labeling
- ASN Receipt
- Daily Receiving
- Kanban Fulfillment
- Material Issue

WMS Functionality.

WMS has all the transactions you need to access and update in real-time from the shop floor. Easily maneuver through purchasing, inventory, shop control, and material request transactions to enter data in efficiently and accurately. See our complete list of available transactions to the left.



Chapter 4

Product Tour

Simple, Big Button UI →

We keep our WMS menus simple with just the options you need on the shop floor. Large menu buttons ensure that shop floor users can quickly and easily make the transactions they need without spending too much time maneuvering through the system.

Visibility Mobile Menu

USA

Purchasing	Inventory
Shop Control	Material Request
Log Out	Printer

Mobile Incoming Receipts


USA

PO Number: E188540

Report No:191916

Packing Slip

Print Report

L.R	Part Number	Description	Req	Qty	...
1.1	37-1001	Bunk Guards	90.000000	0	

Back

Post

All

Streamlined Material

← Receiving

WMS allows you to scan barcoded materials as they are received to the warehouse instead of manually entering receipt data from your office. This real-time transaction allows receipts to be reconciled against purchase orders without the paperwork and materials to be moved into the stockroom and onto the shop floor faster.

Simplify Capturing Production Details →

Post move tickets to your VISIBILITY.net system as they happen. WMS allows you to capture shop floor activities, including labor, machine time, quantities, failures, reject codes and more, in real-time. This ensures the most accurate, up-to-date monitoring of costs.

Move Ticket

USA

Work Order	29928
Operation	40
Receive Qty	7
Complete Qty	7
Reject Qty	1
Reason Code	DISCREPANT
Comp To Oper	50 X

Back
Post



Provide Seamless Bar Code Data Collection ↓

Everything from work orders to reason codes to stockroom bins and more can be barcoded with VISIBILITY.net's WMS. Using handheld devices to scan bar codes versus manually entering data eliminates the risk of human error out on the shop floor as workers are quickly moving from one project to the next.

Shop Order

807789

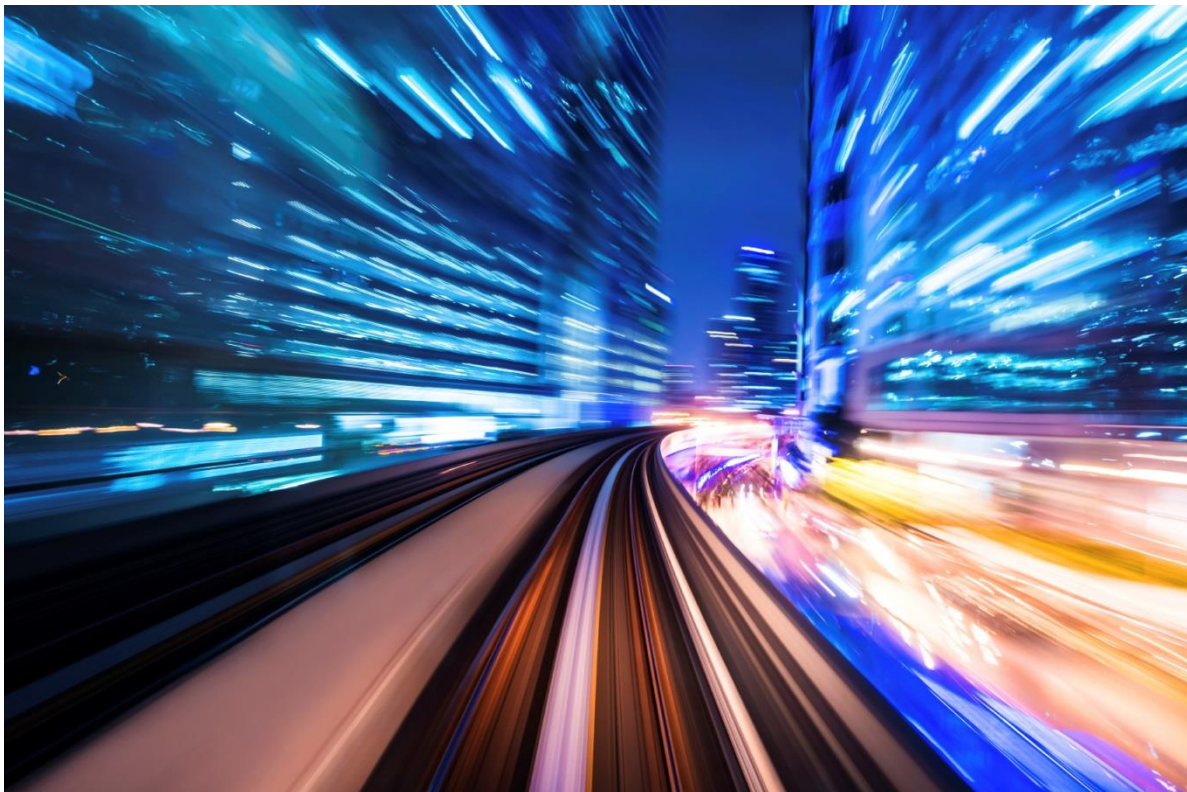
Printed: 12/18/2015

Part	Descr	Rev	UoM	Required	Due Date	Planner				
37-1000	HT Line Machine	-	Each	10	1/1/2013	Scott Cranford				
	Master WO			Sales Order		Promise Date				
	807789									
Descr	Status	W/C	Sta	SelHrs	Start	Complete	OpQty	Rej	Compl	ActHrs
Assembly Lock and Shackle	Scheduled	ASSY-	WB100	0	12/27/2012	12/27/2012	10	0	5	0
		LA								
Operation #:10								Date: _____ By: _____		
1.Insert collector tube through flange opening 2.Insert flange on the pins with tab covering orange sensor 3.Depress back of clam and insert bracket 4.Place plunger cover through collector opening 5.Depress pin and set 6.Swipe actuator or push op ready button 7.Move to next operation										
Item	Component	Description	Reference	Required						
10	37-1001	Bunk Guards		0						
20	37-1010	Electrical Box Assembly		780						
30	37-3001	Stop Bracket, L983		10						
60	BF-1000	BACKFLUSH ASSEMBLY		10						
70	SNT-1000	Series 1000 Crusher		10						
Descr	Status	W/C	Sta	SelHrs	Start	Complete	OpQty	Rej	Compl	ActHrs
Final Inspection	Scheduled	ASSY-	WB200	0	12/27/2012	12/28/2012	10	0	0	0
		LA								
Operation #:20								Date: _____ By: _____		
Descr	Status	W/C	Sta	SelHrs	Start	Complete	OpQty	Rej	Compl	ActHrs

Chapter 5

WMS Benefits

- **Improve Accuracy and Reduce Errors.** Eliminate costly inventory errors.
- **Reduce Labor Costs.** Shorten the cycle time to receive, kit, and complete.
- **Reduce Inventory Costs.** Reduce overall inventory handling costs.
- **Improved Efficiency.** Lower the need for inventory handling resources.
- **Better Employee Satisfaction.** Improve inventory personnel satisfaction level.
- **Higher Customer Satisfaction.** Eliminate incorrect product shipments.



Today's manufacturing world demands the most efficient, accurate, and timely reporting from the shop floor. WMS allows shop floor employees to use handheld devices to scan barcoded transactions in real-time into the VISIBILITY.net system without timely manual data entry and unnecessary paperwork. Improve accuracy, reduce overall labor and inventory costs, and improve efficiency by adding WMS to your shop floor.

Thank you for your interest in VISIBILITY.net's Warehouse Management System. To request a demo of our WMS solution, [please click here](#) and fill out the form.