

Innovative • Reliable • Solutions



www.austinhardware.com



Solutions Line Card

Distribution • Vendor Managed Inventory • Engineering • E-commerce



Welcome To A World Where Industrial Hardware Meets Exceptional Service



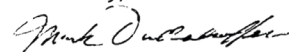
Mark Dudenhoeffer
CEO

Austin Hardware & Supply, Inc. is one of the country's leading industrial solutions providers, with 10 locations in the United States. Since 1960, we have demonstrated commitment to serving a wide variety of manufacturers with excellence and integrity. We work diligently to provide high quality products and innovative solutions so that the companies who place their trust in us can deliver their products to the marketplace as effectively as possible. We are committed to understanding the unique needs of our customers and helping them achieve their goals.

“We believe that as a family owned and operated business we have an opportunity to invest in our people and our customers for the long term.”

Thank you for your interest in Austin Hardware & Supply, Inc. It is our privilege to serve you.

Sincerely,



CEO

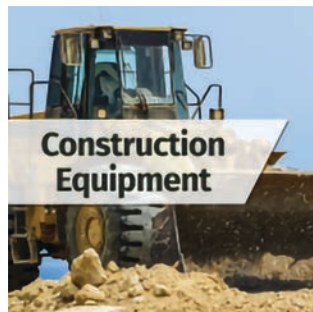
Austin Hardware & Supply, Inc.



SERVING OUR CUSTOMERS SINCE 1960

Austin Hardware® began by selling snaps, trim, and fabric to the trucking industry based on the core values of serving people with honesty and integrity, and always doing the right thing.

Today, our core values remain the same. We now serve multiple industries with many locations. Our key markets include Transportation, Emergency Response Vehicles, Industrial and Fabrication, and the Marine industry. These industries remain at the core of our business.



TEAM AUSTIN

YOUR TEAM OF SOLUTION CONSULTANTS

Big Enough To Take Care Of You, Small Enough To Care.

What's great about being part of the Austin Hardware® family?

Yes, it is no secret, we help our Supply Partners get their products into the hands of industrial customers who are always working to keep their businesses productive and profitable. **But with our solutions team, it's much, much more than simply providing the right parts at the right time.**

Not only can Austin Hardware® serve as your company's supply chain, but our solutions consultant team can add value to your business by working to solve your biggest problems.

Our Customers Look To Us As A Partner To Help Them Solve Problems

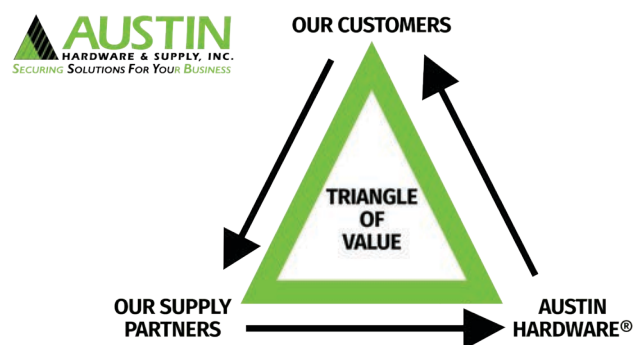
It's true. Our customers look to us as a partner to solve problems and help make their companies more efficient.

In fact, many of our engineered products have been developed as a result of working alongside our partners to understand the needs of our customers, identifying their core issues or pain points and engineering the solution.

We want to hear about your biggest issue and why you are committed to solving it. We want to understand what you may have tried in the past and why it did not succeed. These facts will help us find the right solution fast.

The role of our Sales team, and the mission of our company is to be consultative sellers and advocates for our customers. Our team understands that when we do this, we add value.

The Austin Hardware® Triangle of Value



▲ We're attractive to **OUR CUSTOMERS** because we consolidate, distribute, consult, solve, offer new services, new production techniques and new products.

▲ We're attractive to our **SUPPLY PARTNERS** because we provide access, inventory for immediate sale, distribution across our network, financial stability and a technically competent nationwide sales force.

▲ This Triangle of Value is attractive to **AUSTIN Hardware®** because it provides us with the opportunity to bring new ideas and solutions to **OUR CUSTOMERS** while allowing us to reinvest in our people and our business.

New Product Offerings Brought To You Because of The Austin Triangle of Value:



VENDOR MANAGED INVENTORY

Able II Vendor Managed Inventory (VMI)

Our ABLE II™ Vendor Managed Inventory (VMI) program takes service and savings to the next level and offers tremendous benefits to your bottom line.



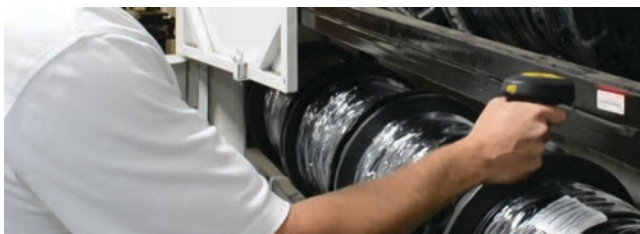
The heart of the ABLE II™ VMI service is user-friendly software that automates virtually every step in ordering, purchasing, stocking and managing your Austin inventories.

Our forecasting tool is state of the art analyzing parts and quantities. It also helps improve fill rates, lower the frequency of part shortages and improves manufacturing throughput.

An Austin Hardware® team member will evaluate your processes and customize the program to work seamlessly with your in-house inventory systems. With ABLE II you will reduce time-consuming tasks and costly paperwork associated with purchasing, invoicing, expediting and more.

You Have Choices

- **Consigned Inventory:** Austin Hardware® owns the inventory and keeps track of how much you use. We bill you for only the used inventory, then replenish to agreed upon stock levels. Flexible. Fast. Efficient.
- **Non-Consigned Inventory:** You own the inventory. Each shipment from Austin is essentially a sales order. Simple. Fast. Dependable.



The transparency of our VMI programs and our willingness to share our data with our customers is unique in our industry.

No

Minimum
Order QTY
Needed

**Vendor
Consolidation**

Multiple Vendors
1 Shipment

Austin Hardware's Able II™ VMI services reach from your front office to your parts bin and beyond, providing a long list of benefits including:

- **Point-of-Use Bin Stocking:** Real-time electronic tracking and automatic restocking maintain your hardware inventories at the precise level and location that you specify on your manufacturing floor.
- **Customized Efficient Programs:** Our VMI team will help you create a customized program that meets your unique manufacturing needs.
- **Summary Billing:** With fewer invoices to process and checks to cut, you will save hours of time and effort for your accounting staff.

AUSTIN GUARANTEED ENGINEERED SOLUTIONS™

Innovating Products, Securing Solutions



WHY AUSTIN ENGINEERING?

We believe that we can add value to your company and your products through our engineering, assembly and sourcing efforts.

As your partner, you will have direct access to our innovative Engineering Solutions team. Our Engineering Team can help improve design, functionality and user experience while driving cost reduction through design intent, assembly time, manufacturing capabilities and sourcing.

PRODUCT DEVELOPMENT

Growing Product Lines

Proven Success - From our Genesis Gas Springs, Patented Drawer Release Systems, Easy Open Vents, Flexible Cowl Vents, Hinges, Tie Down Kits, Strut Nut Kits and Folding Steps all the way to our game changing LifeDefender Cabinet Security Systems!

Capabilities

Assembly, 3D Design, Plastics, Rubber, Composite, Sheet Metal, Stamping, Casting, Injection Molding, Tube Bending, Welding, Plating, Painting, Silk Screening, CNC Milling, CNC Lathe, Assembly, Machining, Prototyping...and more!

Product Development Portfolio

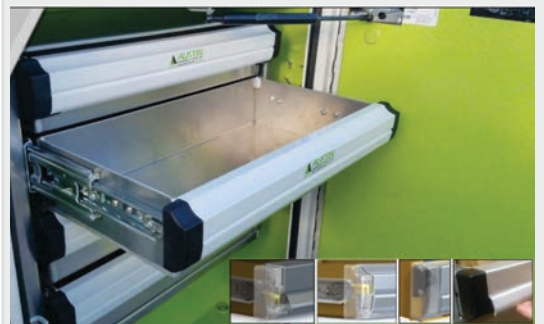


FLEXI-VENT

PART NUMBER:
VT-2750-ABS
MATERIAL:
COVER - ALUMINUM DIE CAST
BASE - FLEXIBLE ELASTOMERIC
HOSE ADAPTER - ABS PLASTIC
FINISH:
COVER - TRIPLE CHROME PLATING
SIZE:
ACCOMMODATES 3" & 4" HOSE
WEIGHT:
2.0 LBS.
ADDITIONAL INFORMATION:
LOW PROFILE, QUICK INSTALLATION

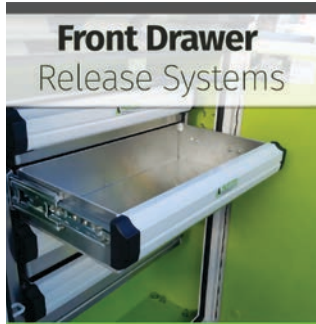


THE FLEXIBLE MOUNTING COWL VENT



AUSTIN ENGINEERED PATENTED & PATENT PENDING PORTFOLIO PRODUCTS

Drawer Release Systems



Key features include:

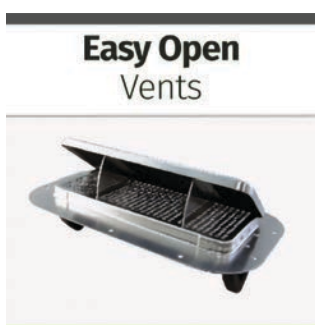
- Allows One-Handed Operation - A 300# drawer can be pulled open with a single finger!
- Intuitive to Use - The design, location, and function make operation easy.
- Leverage - The operation of our drawer release systems increases the leverage applied to the triggers to make unlatching easy. Potential binding of the latch triggers is minimized.



Key Features Include:

- Ambulance Interior Storage Compartments (SAE J3058) Compliant
- Ground Vehicle Standard for Ambulances (CAAS GVS v1.0) Compliant
- Standard for Automotive Ambulances - 2016 Edition (NFPA 1917) Compliant

Vents



MORE SELECTION | MORE SOLUTIONS

Latches

Our selection varies from compression latches, dead bolt latches, rotary latches, and more.



- Compression Latches
- Dead Bolt Latches
- Gate Hardware
- Over Center & Draw Latches
- Refrigeration Latches
- Rotary Latches
- Slam Latches
- Snap
- Magnetic Latches

Hinges

Whether you're looking for gate hinges, cabinet hinges, butt hinges or specialty hinges we can be your source.



- Bolt-On Hinges
- Butt Hinges
- Concealed Hinges
- Continuous Hinges
- End Hinge Blocks
- Latch Hinges
- Lift-Off Hinges & Plant-on Hinges
- Strap Hinges
- Weld-On Hinges

Rubber Products

From mini-bumpers to mud flaps, we offer a wide range of rubber products.



- Mini Bumpers
- Mud Flaps
- Rubber Dock Bumpers
- Rubber Door Bumpers
- Rubber Grommets
- Rubber Hose
- Isolators

Lighting

Safety lights, stop lights, tail lights, turn signal lights, warning lights, etc. You are sure to find the right option for your application.



- Safety Lights
- Stop Lights
- Tail Lights
- Turn Signal Lights
- Warning Lights
- LED Lights
- Vehicle Lighting

Fasteners

From standard nuts, screws, bolts and washers to specialty structural bolts and rivets, inserts, weld fasteners, and fastening tools.



- Bolts, Screws, Washers
- Captive Screws
- Fastening Tools & Components
- Flange Screws & Lock Nuts
- Huck Fasteners
- Rivets, Inserts & Insert Tools
- Nuts
- Turned Eye Bolts

Hand Rails & Foot Steps

We carry a variety of hand rails, and foot steps. From stanchions to folding steps, we've got you covered.



- Folding Foot Steps
- Hand Rails
- Handholds
- Hose Roller Assembly
- Stanchions

Lock Cylinders & Latch Accessories

We offer a full range of latch accessories including cables, fittings, lock cylinders, rods, rod guides, keys, and more.



- Cables
- Fittings
- Lock Cylinders
- Rods
- Rod Guides
- Keys
- Accessories

Bar Locks

From common bar locks used in the truck and trailer industries to customized bar locks to meet your specific needs, we've got it all.

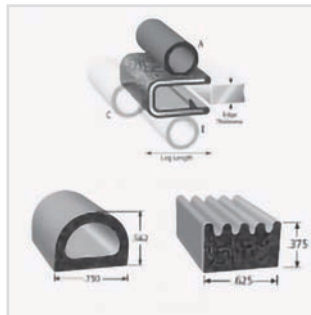


- 2 Point
- 3 Point
- Butterfly
- Anti-Rack

MORE SELECTION | MORE SOLUTIONS

► Trim, Gasket & Weatherstrip

Whether you need to seal a door, window, or windshield, or create a safe, finished edge, we have the trim, gasket, or weatherstrip you need.



- Body Side Molding
- Bus & Rail Trim
- Edge Trim
- Push-On Trim Seal
- Quickedge Decorative Protective Trim
- Rubber Gaskets
- Trim Seal
- Weatherstrip
- Window Channel

► L, T, & Grab Handles

Our handles come in every size and style with optional locking, key-locking, or padlocking capability.



- Grab Handles
- Inside Handles
- L-Style Handles
- Lift Handles & Ring Pulls
- T-Style Handles
- T-Style Handles
- Handle Components

► Drawer Slides

From light duty 50 lbs. slides to extra heavy duty, 1000 lbs. with lock-in/lock-out features, we offer an extensive selection.



- Super Heavy Duty Slides (Up to 1,100lbs)
- Extra Heavy Duty Slides (Up to 500lbs)
- Heavy Duty Slides (Up to 300lbs)
- Medium Duty Slides (Up to 130lbs)
- Light Duty Slides (Up to 100lbs)

► Sealants & Adhesives

We offer the transportation industry the full line of Sika products, as well as sealants and adhesives from other leading brands.



- Adhesives
- General Sealants
- Lube, Corrosion Prevention
- Undercoating
- Other Tapes
- Primers/Cleaners
- Scorpion Bed Liner
- Silicone Sealants
- Application Equipment

► Gas Springs

Used in a wide variety of industrial applications, Genesis® gas springs (gas shocks) cover a broad range of both dimensions and forces.



- Exclusive Genesis Gas Springs
- Door Check Gas Springs
- General Purpose Gas Springs
- Gas Spring Accessories
- Online Gas Spring Part Finder

► D-Rings, Folding T's & Paddle Handles

We offer a full range of D-Ring, Folding T Handle, Paddle Handle and Power Locking Systems.



- D-Rings
- Folding T Handles
- Paddle Handles
- Power Locking Systems

► Drawer Release Systems

Our patented Front Drawer Release (FDR) & Genesis Drawer Release Pro/Lite are the perfect solutions for mobile storage situations.



- Front Drawer Release (FDR)
- Drawer Release Pro
- Drawer Release Lite

► Abrasives & MRO Consumables

Safety products such as gloves, respirators, protective eyewear, ear plugs, tapes, abrasives, and more.



- Drills & Bits
- Sanding, Grinding Components
- Hole Saws & Saw Blades
- Spray Paint
- Safety Clothing
- Paint Accessories
- Material Handling & Packaging
- Tools & Equipment

Ventilation

Our vast selection of ventilation products are designed to aid in the airflow of truck cabs, livestock trailers or any enclosure.



- Clam Shell Vents
- Classic Ventilators & Powered Vents
- Cowl Vents
- Drains
- Duct Vents
- Easy Open Vents (EOV)
- Louvered Vents
- Open/Close Vents
- Roof Vents & Skylights

Tie Downs & Cargo Control

We offer everything from tie downs to interior van control systems.



- Body Tie Downs
- Cargo Tie Downs
- Flatbed & Exterior Cargo Control
- Interior Van Cargo Control
- Rope/Chain Loops & Hooks

Clamps, Cable, Wire, Electrical

We carry a full line of De-Sta-Co clamps as well as pipe and tube clamps for use in a variety of industrial applications.



- Butt Connectors
- Cable Ties
- Convoluted Loom
- Hole Plugs
- Hose Clamps
- Material Holding Clamps
- Terminals
- Wiring & Tube Clamps

Safety & Related Products

Safety products such as anti-slip tape, backup alarms, conspicuity tape, reflector kits.



- Anti-Slip Tape
- Ashtray
- Back-up Alarms
- Conspicuity Tape
- Emergency Reflector Kits
- Fatigue-Reducing Floor Mats
- Fire Extinguishers
- Isolators

Door & Lid Holders & Assists

We offer a variety of door check, lid prop, and door hold-back styles, materials, and finishes to meet the needs of your unique application.



- Door & Lid Props
- Door Checks
- Door Holdbacks
- Ladder Holders
- Seat Irons
- Stabilizers
- Water jug Brackets
- Window Regulators

Strut Channel & Supports

We offer a variety of strut channel, mounting accessories and standard supports.



- Shelf Standards & Supports
- Strut Channel
- Strut Channel Accessories
- Strut Nut Kit

Roll-Up Door & Ramp Springs

Austin supplies roll-up door hardware from the two most prominent names in the industry: Todco and Whiting.



- Ramp Door Springs
- Hinges
- Handles
- Cables
- Drums
- Seals
- Todco Roll-Up Door Parts
- Whiting Roll-Up Door Parts

Forgings

Designed for use in truck, emergency vehicle, bus and van, enclosure, agricultural, military/government, and many more applications.



- Clevis Pins
- Eye Bolts
- Levers & Lever Nuts
- Rod Ends
- Tank Flanges
- Tow Hooks
- Yoke Ends

Austin Hardware® | E-commerce

[HOME](#)
[ALL PRODUCTS](#)
[INDUSTRIES](#)
[CUSTOM ENGINEERING](#)
[VMI](#)

AUSTIN HARDWARE by The Numbers

Over 55 Years
of Exceptional Service

10 Locations
Nation Wide

More Than 20,000
Products From 970
Vendors

More than 80,000
Customers Served

Gas Spring
Part Finder

Get Started

Latches

Shop Now

Hinges

Shop Now

Drawer Slides

Shop Now

You play an important role as our partner, and we're grateful that you choose to do business with us. In addition to your purchase, we want you to be completely satisfied with your experience, which is why we're proud to announce the new & improved **austinhardware.com!**

Our streamlined user interface provides a more interactive experience allowing you to easily find the information you're looking for. You can now purchase online, browse products, learn about our services, & much more.

We've cleared the navigation clutter but kept access to high level resources right where you are used to finding them. Our reorganized, intuitive menu structure will help you find what you need easily. Our improved, highly visible rotating graphics make getting to the most used features of our site a simple click away.

www.ahs.us/customer/account/create/

ONE. STOP. SHOP.

New Online Account Features

Review Past Invoices	✓
Use Account Terms	✓
Store Credit Cards	✓
Update Personal Information	✓
Search by SKU or Part Name	✓
Track Shipments	✓
Verify Pricing	✓
Save Orders	✓

Paper Catalog: Our 1,920-page paper catalog is still available upon request and is accessible on-line through our easy-to-navigate flipbook format.



Genesis Gas Spring Part Finder:

Extended Length	Stroke	Connector Material	Connector Size	Force lbf (N)
Please Select ...				
Shaft Size mm	Shaft Size Inch			

Our ability to consolidate supply chains, offer consistent pricing and provide a nationwide footprint for localized service is of high value to our multi-location customers.

Austin Hardware and Supply, Inc. Headquarters is located in Lee's Summit, MO.

**950 N.W. Technology Drive
Lee's Summit, MO 64086**

Tel.: 800-821-3520

Fax: 816-246-2890

sales@austinhardware.com

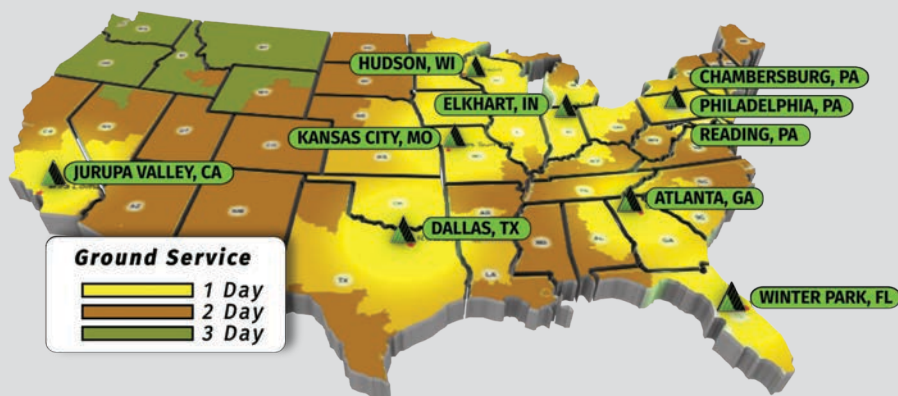
www.austinhardware.com

Hours of Operations:

Monday-Friday | 8a.m. to 5p.m.

© 2019 Austin Hardware and Supply, Inc.

This document has been carefully checked. However, Austin Hardware does not assume any liability for errors or inaccuracies. Published specifications are subject to change without notice. Product suitability for an area of application must ultimately be determined by the customer. In all cases, products must never be operated outside their published specifications. Austin Hardware does not guarantee the availability of all published products.



10 Warehouse Locations Nationwide Serving 95% of the US in 2 Days or Less

Lee's Summit, MO 64086 (Headquarters)

950 N.W. Technology Drive

Tel.: 800-821-3520

Fax: 816-246-2890

MO.Sales@austinhardware.com

Buford, GA 30518

1810 Satellite Boulevard

Tel.: 800-821-1664

Fax: 770-932-1077

GA.Sales@austinhardware.com

***Chambersburg, PA 17201**

1051 Sheffler Drive, Suite A

Tel.: 800-634-4293

Fax: 610-921-3099

PA.Sales@austinhardware.com

Elkhart, IN 46514

2806 Harman Drive

Tel.: 800-220-8118

Fax: 574-206-8056

IN.Sales@austinhardware.com

Hudson, WI 54016

581 County Road A, Suite C

Tel.: 800-220-8118

Fax: 574-206-8056

IN.Sales@austinhardware.com

Jurupa Valley, CA 91752

3323 Grapevine Street

Tel.: 800-821-3520

Fax: 816-246-2890

MO.Sales@austinhardware.com

****Philadelphia, PA 19153**

3751 Island Avenue

Tel.: 800-634-4293

Fax: 215-331-7795

PA.Sales@austinhardware.com

Reading, PA 19604

1001 Rockland Street

Tel.: 800-634-4293

Fax: 610-921-3099

PA.Sales@austinhardware.com

Rowlett, TX 75088

4302 Industrial Street

Tel.: 800-527-5640

Fax: 972-412-0657

TX.Sales@austinhardware.com

Winter Park, FL 32792

6450 University Blvd. Unit #4A

Tel.: 800-821-1664

Fax: 770-932-1077

GA.Sales@austinhardware.com

In Canada Call 800-220-1015

sales@austinhardware.com | www.austinhardware.com

*Warehouse location only serving customers in their immediately surrounding areas.

**Customer service location only.