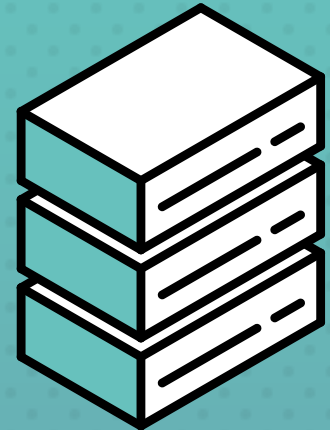


# IT NETWORK ENGINEER



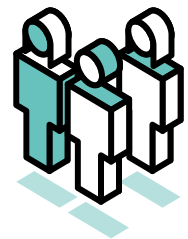
FUNDING  
**£18,000**

18 MONTHS  
**LEVEL 4**

On this IT Network Engineer Level 4 apprenticeship programme, learners will embark upon a high-powered 18-month course to enable already competent IT professionals to move to the next level of capability and responsibility via senior roles in Network and System Engineering. Candidates on this programme will be able to develop their problem-solving, creativity and analytical skills and have a passion for network principles, systems, architecture and security.

**98%**

EMPLOYER SATISFACTION\*



## PROVIDER OF PROFESSIONAL QUALIFICATIONS



CompTIA



**97%**

APPRENTICE SATISFACTION\*

## EMPLOYERS THAT WE WORK WITH



VIACOM

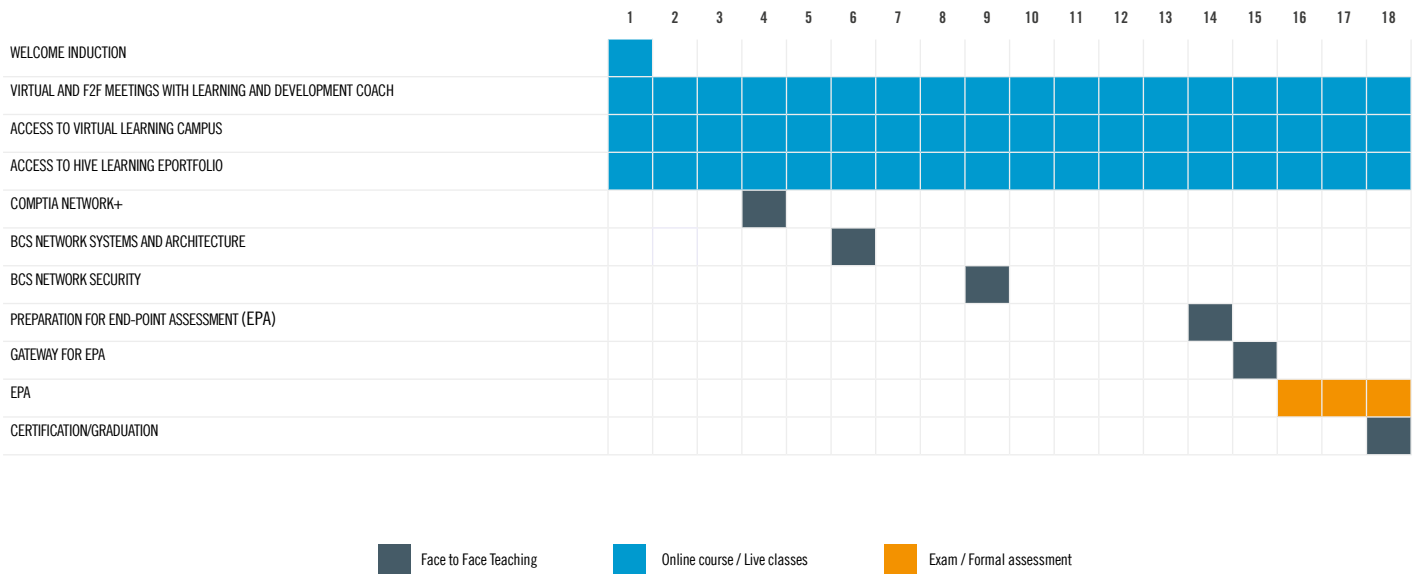


McCANN  
LONDON



Omnicom  
MediaGroup

# YOUR LEARNING JOURNEY



## ABOUT CREATIVE PIONEERS

- Creative Pioneers™ is an award winning nationwide campaign to find the next generation of advertising, creative and digital media talent.
- The brainchild of Janet Hull OBE, since 2012 the Institute of Practitioners in Advertising (IPA) ran Creative Pioneers and worked with 300+ advertising agencies.
- With the Apprenticeship Levy introduced in April 2017, the IPA chose Arch Apprentices to power the programme to keep up with increasing demand.
- In 2016, Ofsted rated Arch 'Outstanding' in every area making them one of the top 5% of all independent learning providers.

## WHAT'S INCLUDED IN THE APPRENTICESHIP?

20% of the apprenticeship must be done away from the apprentices' work to count towards their off-the-job training - this can be a mix of face to face and virtual classrooms, projects, distance learning and meetings with their dedicated Learning and Development Coach.

Qualifications included:

- **CompTIA Network+**
- **BCS Network Systems and Architecture**
- **BCS Network Security**
- **IT Network Engineer Level 4 Apprenticeship**

## PRE ENTRY REQUIREMENTS

- Must already have English and Maths GCSEs at Grade C (4) or above and preferably a total of five GCSEs.



## THE PERSON YOU'LL HAVE AT THE END OF THE APPRENTICESHIP WILL:

- ✓ Design simple networks from a well-defined specification and apply appropriate security products and processes.
- ✓ Install and configure network components, including switches, routers and firewalls.
- ✓ Monitor, test and adjust network systems and performance to meet accepted standards.
- ✓ Apply diagnostic tools and techniques to identify the causes of network performance issues.
- ✓ Apply structured approaches to troubleshooting network issues and repair faults.
- ✓ Undertake system upgrades to network hardware, software and operating systems.