



Looking to eradicate drug losses in healthcare?

The loss of prescription drugs is an age-old problem in the healthcare sector, and one that costs society millions every year. Not only do hospitals lose money, but their drugs end up on the streets, where they also feed addiction and criminality.

The underlying issue is that hospitals do not have an easy way of controlling who has access to the medicine cabinets. Now, Schulte-Schlagbaum's (SAG's) Swedish distributor is offering a solution using Criotive, the secure provisioning service from Sony.

New security package



Last year, Hans Ahnström, Stockholm-based distributor for SAG locks, decided to try and tackle this problem. He put together a special security package for healthcare customers which combines electronic locks with the Criotive secure provisioning service. Hans explains, "Both the hardware and the software in this solution come from two highly credible suppliers: SAG Lock Systems and Sony Network Communications Europe."

A long-awaited solution

"My organisation had already been working with SAG and electronic locks for many years," Hans recalls. "The big question for us was how to make it easier for our customers to control access in their facilities. At the time, we had nothing new to offer them, but then Sony informed us about Criotive, their over-the-air secure provisioning solution, and it sounded really interesting."

What's new?

Most often today, access rights are distributed as physical cards, tags or keys which all require hospital administrators and employees to meet in person. This job is time-consuming, particularly when hundreds of employees are involved and there's a high staff turnover. Moreover, systems tend to be quite complex, which leads administrators to take shortcuts such as granting blanket access to employees. This approach can easily lead to security breaches.

"Criotive is by far the best technology I've come across in 30 years in this business"





Criotive access management over the air (OTA)

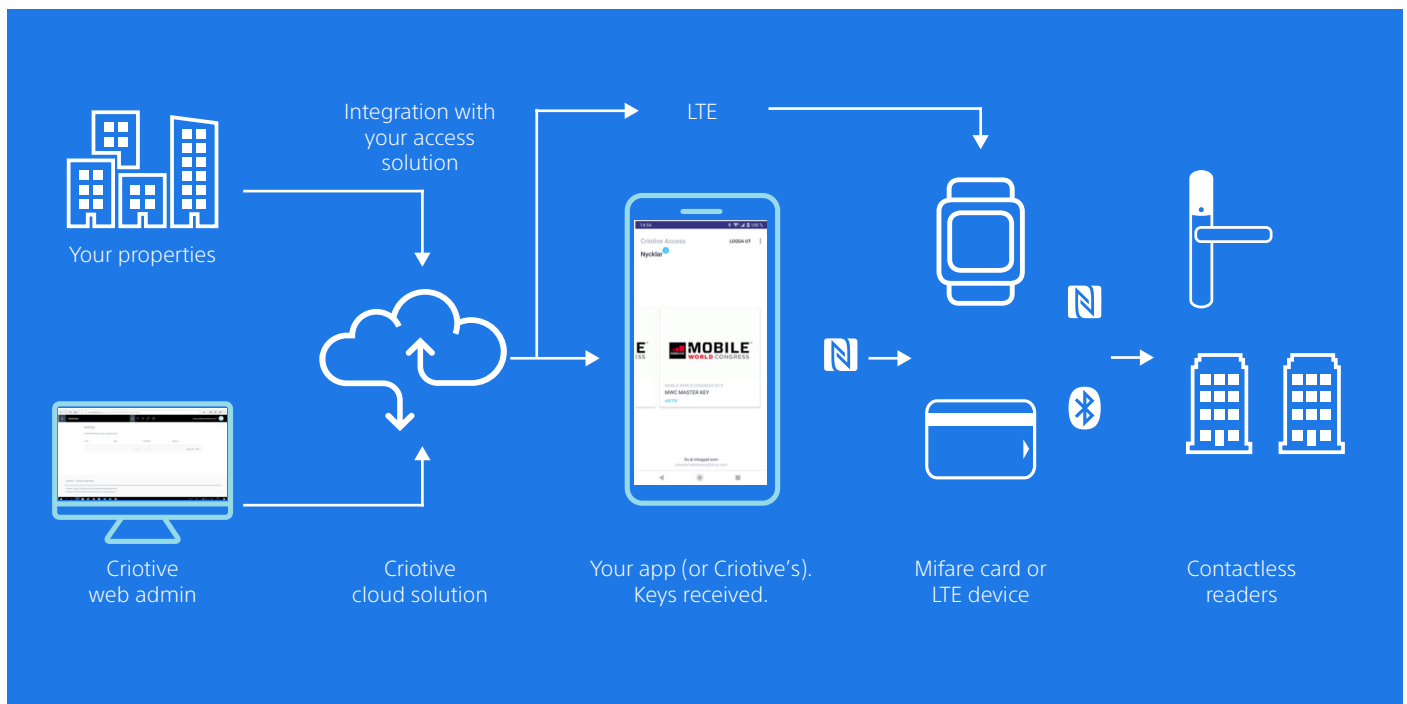
Using Criotive's simple web interface, administrators can define access rights (i.e. virtual keys) with pinpoint accuracy and distribute them to end users' mobile phone/key card or wearable device. They can grant, revoke or prolong access rights down to an individual employee, a single location (or medicine cabinet) and a specific time.

The user receives a notification and can activate the new 'key' right away. "Everything is handled remotely" says Hans. "Administrators don't need to meet employees. They don't have to be in the same building, or even in the same country. Thanks to an encrypted channel between the administrator and the user's device, all transferred data is secure."

Additional advantages

Implementing the Criotive service has given Hans' healthcare customers the result they hoped for: an end to drug losses. In addition, a series of unexpected advantages have come to light. For example, office staff save time by distributing access rights remotely, and field workers save time because they no longer have to return to a central office to collect or leave keys or key cards between visits to patients at different facilities.

*"It saves time for businesses
and employees"*



Easy implementation

Getting new customers up and running has also proved surprisingly easy. It starts with a straightforward plug-and-play installation. The SAG electronic locks arrive pre-configured, ready for administrators to enter the names of their personnel. "We offer basic training to get people going, but Criotive is so intuitive that our customers often start using it successfully even before they've been trained," observes Hans.

Positive feedback

The feedback from healthcare facility managers has been overwhelmingly positive. "Criotive is winning us new customers every month. They report that administration has become much easier and more efficient. Now, only one global administrator is needed instead of one at each location," reports Hans.

*"There are so many benefits
for my customers"*

Looking ahead

Hans is proud of what they've already achieved and looks forward to doing more with Criotive in the future. "I'm really happy to work with this technology because it brings so many benefits to my customers. Quite apart from the better safety and security, the time and money they save frees up more resources for patient care. And this is only the beginning. In the long term, we think it will be possible to develop many more services based on the Criotive platform."

Beyond healthcare

Healthcare is just one of many potential application areas for Criotive. There are many more, such as stadiums, hotels, fitness centres, retail stores, offices and schools. In fact, Criotive can add value in any situation where secure connections between devices, people and access management systems are needed.

The fact that Criotive is technology- and vendor-agnostic makes it unique on today's market. This is especially interesting for companies that currently own locks from multiple manufacturers. Now they too, can enjoy the advantages of a modern access management service – one which works equally well regardless of the installed hardware.

Criotive key benefits

- Lower losses through higher security
- Unique technology- and vendor-agnostic open platform
- Multiple provider flexibility
- Easy-to-use for administrators
- Seamless experience for personnel
- Time- and cost-saving OTA access rights
- No manual card programming
- Straightforward upgrades

"Criotive makes remote access management easy"

About Schulte Schlagbaum (SAG)

Over its nearly 200-year history, German-based SAG has become a key global player in the electrical & electronic manufacturing industry. Mainly serving the hospitality, healthcare and educational sectors, they have developed a strong offering within access and payment solutions. This includes everything from classic door locks to electronic locking and access systems, as well as management solutions for guest and visitor monitoring.

To learn more, visit: <http://www.sag-schlagbaum.com>

CRIOTIVE

About Criotive from Sony

Criotive is a secure, flexible platform that enables remote, over-the-air distribution of access rights from the service provider to the end-user's connected device such as a phone/card or wearable. The platform is end-to-end encrypted, based on open standards, technology-agnostic and fully scalable. It reduces both the manual work involved in programming key cards and the need to meet end users in person. Criotive's intuitive user interface makes managing access rights secure and easy, regardless of the number of users or devices involved.

<https://iot.sonymetworkcom.com/criotive>