



Short Message Service Center

Getting Your Message to the Right Destination

Our Short Messaging Service Center (SMSC) is a virtualized, compact, high-capacity, multiprotocol SMS delivery application with multiple deployment options. The SMSC helps mobile operators to differentiate their data messaging services, offer enhanced applications, and increase subscriber loyalty and customer satisfaction, while minimizing CAPEX/OPEX.

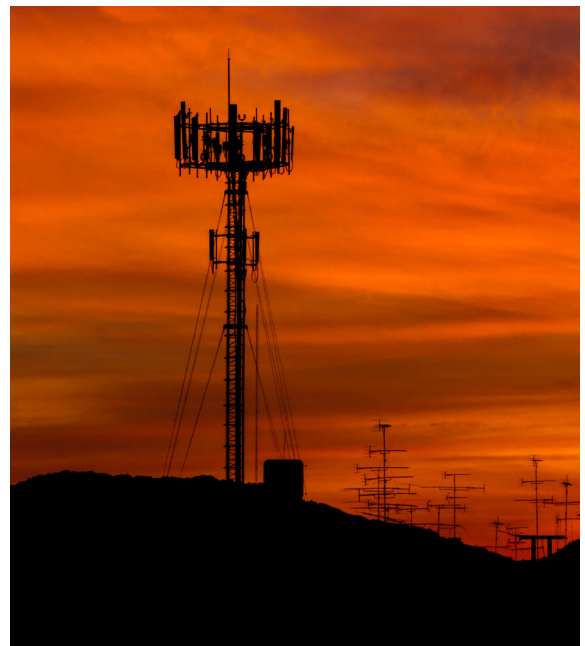
SMSC supports:

Basic operations - Voice mail notification, numeric paging, mobile terminate/originate messages, and mobile IP (web-based messaging).

Advanced operations - Enhanced Messaging Services (EMS), including ringtone downloads, picture messages, audio clips along with contact lists.

Multiple network technologies - Interworking among various technologies/networks, including CDMA, TDMA, GSM, and UMTS for the traditional SS7 delivery of SMS.

Built-in IP messaging - Enables single-box support for legacy networks and IMS/LTE (SIP and Diameter signaling respectively), and minimizes hardware proliferation.



Supports machine type communication and IoT applications.



Benefits & Features

- Fully virtualized SMSC application available for private, public, or hybrid cloud deployments using Openstack.
- Flexible text messaging and enhanced message service for delivery options.
- Simultaneous support of today's 2G, 3G, and 4G environments supporting both CDMA (3GPP2) and GSM (3GPP) networks.
 - » TCP/IP control plane signaling supported for LTE/IMS deployments - SIP and DIAMETER.
 - » Future proofing your investment as your network continues to evolve to all TCP/IP architecture.
- Carrier services supported:
 - » Machine to Machine
 - » EMS
 - » Prepaid SMS
 - » Premium messaging events (e.g. voting)
 - » Embedded promotions
 - » Usage controls
 - » Message archiving
 - » Personalized messaging features such as copy/forward, etc.
- Location Based Services (LBS) – User Plane Support for integration with LBS applications, which support trigger messages for User Plane Network Initiated location requests.
- SS7, SIP and SMPP intra- and inter-carrier SMS delivery solutions.
- Scalable, geographically redundant platform with 99.999% reliability.
- Compliance with US federal mandates, such as CALEA, Number Pooling, and Wireless Number Portability.
- Spam filtering capabilities via operator provision-able spam text strings and message volume, over a period of time from sending source.
- Detection and discarding of duplicate messages due to dual mode handsets moving in and out of LTE networks, to improve user experience.
- Complete, end-to-end interoperability with all core network components based on standards defined by the IETF, 3GPP & 3GPP2 standard committees.

About Us

The Location Technologies group of Comtech Telecommunications Corp. is a leading provider of precise device location, mapping, public safety, and messaging solutions. Sold around the world to mobile network operators, government agencies, and Fortune 150 enterprises, our platforms allow you to locate, map, track, and message.

275 West Street
Annapolis, MD 21401 USA
Toll Free: 1.800.557.5869
Outside US: +1.410.263.7616
www.comtechenterprise.com