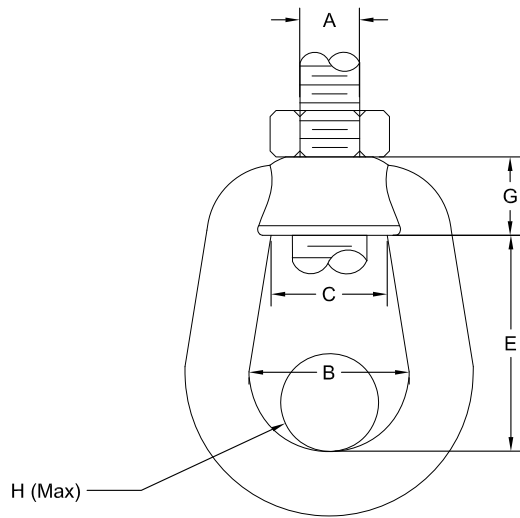
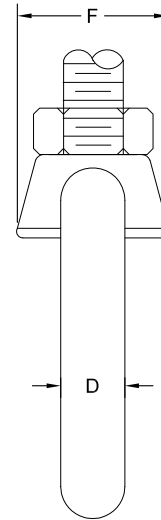


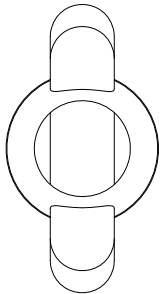
### Front View



### Side View



### Top View



Rod Size A	Max Load		Weight	B	C	D	E	F	G	H	Eye Nut Number
	650 F	750F									
3/8	730	572	0.28	1 5/32	13/16	13/32	1 17/32	31/32	5/8	1	0
1/2	1,350	1,057	0.28								
5/8	2,160	1,692	0.62	1 1/2	1 3/16	1/2	2	13/8	11/16	1 1/4	1
3/4	3,230	2,530	0.60								
7/8	4,480	3,508	1.70	2	1 11/16	3/4	2 11/32	1 15/16	1	1 3/4	2
1	5,900	4,620	1.70								
1 1/4	9,500	7,440	3.60	2 1/2	1 13/16	1	3 3/8	2 3/8	1 1/4	2 1/4	3
1 1/2	13,800	10,807	3.50								
1 3/4	18,600	14,566	16.40	4	4	1 1/2	6 1/4	4	2 1/4	3 3/4	4
2	24,600	19,265	15.90								
2 1/4	32,300	25,295	15.40								
2 1/2	39,800	31,169	14.90								

**Notes and Specifications:**

1. Material to be forged steel
2. Plain, Zinc Plated, and HDG finishes available

CUSTOMER DATE: CO NAME: CONTACT: TEL. NO. E-MAIL: RFQ: PO: REF:	DWN.	DATE	6/10/15	<b>ADVANCED PIPING PRODUCTS</b> 5611 Guhn Road Houston TX, 77040 Tel. 713-956-2922 Fax 713-956-4090 www.appinc.co				
	CHK.							
	ENG.							
	APPR.				DWG DESCRIPTION Fig. 290 Weldless Eye Nut			
	MFG.							
	SO.							
				SIZE	A	2900615	REV.	0
	NEXT ASSY	QTY		SCALE	None	SHEET	1	OF 1