

APP ProTek Pipe Shoe



YOU WILL NEED:

BANDING COMPONENTS



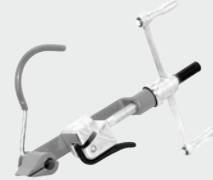
- BI-C206**
3/4" Stainless Steel Banding Clips
- BI-C256**
3/4" Stainless Steel Banding Clips

SILICONE/EPOXY



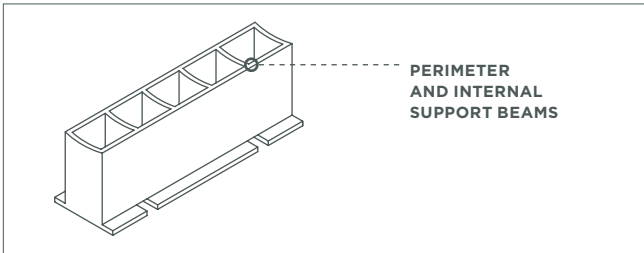
- SL-100**
Silicone Sealant

TOOLS AND COMPONENTS



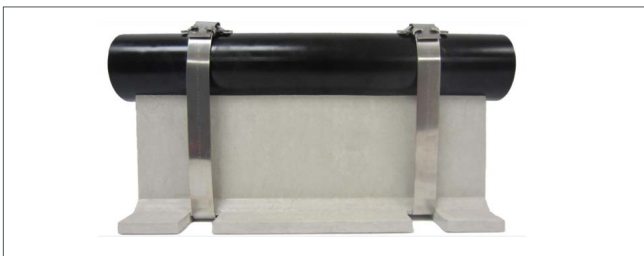
- BI-C001**
BAND-IT Tool

1. APPLY SILICONE



- ① Run a continuous silicone bead around the perimeter of the ProTek Pipe Shoe and along the internal support beams.

2. BANDING



- ① Pull out the necessary length of banding (BI-C206) and cut it with the built-in cutter on the BAND-IT Tool (BI-C001).

- ② With the ears of the banding clip (BI-C256) pointed up, pull the banding through the banding clip.
- ③ Bend the banding so at least two inches are bent under the clip and squeeze the banding and clip to prevent the banding from pulling out during tensioning.
- ④ Insert the banding through the banding slots and wrap it around the pipe and through the clip bracket.
- ⑤ Insert the banding in the open slot of the BAND-IT Tool and turn the handle of the tool until the band is fully tightened.
- ⑥ Roll the nose of the tool over the buckle to set the lock and then pull the cutting handle to cut the band. Remove the tool and hammer down the ears of the clip.
- ⑦ Repeat steps 2-8 for the second banding slot.

3. FINAL STEPS



- ① Run a final silicone bead around the upper edge of the pipe shoe.

If you have further questions on ProTek Pipe Shoe installation or any other product inquiries, contact APP at 888.408.9872 or 713.956.2922.