

WorkCentre™
5325 / 5330 / 5335
A3
Black and white
Multifunction System



Xerox® WorkCentre™ 5325 / 5330 / 5335 Multifunction System Optimised office efficiency



WorkCentre™ 5325 / 5330 / 5335

Multifunction System

The modular WorkCentre 5300 series multifunction system has been designed to help you optimise everyday processes within your business, allowing you to reduce costs and improve the overall productivity of your workforce. The tasks you do on a daily basis become automated with simple to implement workflow solutions.

Reduce costs with superior work group efficiency

Finding ways to help you reduce costly print output by reducing the amount you print, the WorkCentre 5300 allows this by introducing simple yet effective workflows. Together with its energy efficient design and patented toner technology you can even look to save on the hidden costs.

- **Print drivers with independent application default settings.** Allows you to set each application to print the way it should, helping you to find intuitive ways to reduce current print output and avoid potential waste when incorrect settings are chosen.
- **Stop unnecessary journeys to the device.** Retrieve and read incoming faxes without printing them by easily configuring the device to forward them to an email address or network folder.
- **Easily find your electronic documents.** Convert paper documents into a Text Searchable PDF format at the device, which allows you to use any standard search engine to search for specific content contained within the document.
- **Ad hoc users without computers.** The WorkCentre 5300 series provides scan to/print from USB functionality for walk up convenience.
- **Flexibility that meets your individual needs.** From copy only requirements to full multifunctional capabilities with speeds of up to 35 ppm, the choice is truly yours.

Total peace of mind

We all know of the security risks in today's electronic society, but how many have the expertise to prevent the risks? The WorkCentre 5300 series gives you all the protection you need, without the knowledge of a trained expert.

- **Keep yours and your clients' information safe at all times.** When scanning across the unsecure Internet, choose an Encrypted and/or Password protected PDF file format at a touch of a button. Print using the Secure Print feature that password protects the document until the user is at the device ready to retrieve it.
- **Securing the device.** The 256-bit Hard Disk Encryption and Image Overwrite are provided as standard features. This means that even document data processed and stored at the device is protected without intervention from others.
- **Enhanced and complete industry leading protection.** Available with minimal intervention, standard secure protocols such as IPv6, SNMPv3, IPsec, 802.1X, HTTPS/SSL and more are supported. Various secure authentication methods including the latest Biometric reader technology are also supported, backed-up with independent Full System certification to EAL3 Common Criteria standards (pending). No more worrying about your device's security.

Environmentally conscious

All aspects of your environmental concerns are met with the WorkCentre 5300 series. Reduced energy consumption is achieved with industry leading technology such as patented EA Toner, which reduces fusing temperatures, and usage of an LED scanning array that reduces energy consumption by 1/3 over conventional Xenon lamps.

- **Right fit with less noise.** A smaller device footprint and quiet operation means it sits in your office without disturbing your workers from doing their daily jobs.
- **Standard two sided capability.** Allows you to reduce paper usage and save money.
- **ENERGY STAR® qualified.** The WorkCentre 5300 series meets the stringent ENERGY STAR requirements for energy usage.

Please check configurations for the features available

WorkCentre™ 5300 Series Quick Facts

- Print and copy at up to 35 ppm
- Powerful scan and fax solutions
- Up to 1200 x 1200 dpi print resolution
- Max paper capacity: 5,090 sheets
- Best-in-class security – Full System Common Criteria Certified (ISO 15408)*
- Xerox Workflow Solutions built on the Xerox Extensible Interface Platform® (EIP)

* Pending



Print / Copy / Scan / Fax

A3

35 ppm

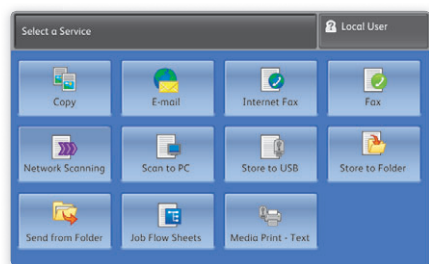
WxDxH:
597 x 637.5 x 1,115 mm



WorkCentre 5335 with High-Capacity Tandem Tray

1

The innovative touch screen on the WorkCentre 5300 series front panel makes walk-up operation easy. It features a 178 mm full-colour display with bright icons and intuitive navigation for optimal ease-of-use.



2

Front-panel USB port makes it fast and easy to print from or scan to any standard USB memory device (Copier/printer/scanner only).

3

110-sheet Duplex Automatic Document Feeder (DADF) quickly processes single- or double-sided originals.

4

50-sheet bypass tray for speciality media and custom sizes.

5

The optional 2,000-sheet High Capacity Feeder* brings maximum paper capacity to 5,090 sheets.

6

Standard paper input includes your choice of two 520-sheet trays with a stand or a 2000-sheet High Capacity Tandem Tray.

7

Space-saving Integrated Office Finisher with convenient single-position stapling.

8

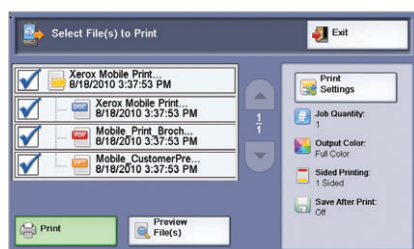
Office Finisher LX adds 2,000-sheet stacking, hole punch, multi-position stapling and optional booklet maker.



Flexibility with room to grow

Choose a powerful A3 copier and add printing, scanning and faxing capabilities to optimise your work group's productivity. As your work volume increases, the WorkCentre 5300 series is ready to expand to meet your business needs.

Xerox Workflow Solutions take your WorkCentre 5300 series multifunction system to a higher level of office optimisation.



Xerox Mobile Print Solution is just one of many personalised solutions you access right from the touch screen interface.

Transform the way your organisation gets vital work done with the power of Xerox Workflow Solutions. When people work efficiently, in less time and with fewer steps, productivity goes up. Xerox knows it's about streamlining your workflow – and it starts by using Xerox Workflow Solutions right from your WorkCentre 5300 series device.

Xerox Mobile Print Solution*

With Xerox, being mobile has never been easier. Xerox makes mobile printing simpler and more convenient, while keeping your business secure. That's why we're empowering today's mobile professionals with the freedom to send print jobs from any email-enabled device.

* Copier/printer/scanner only.

WorkCentre™ 5325 / 5330 / 5335

		WorkCentre 5325 / 5330 / 5335 Copier	WorkCentre 5325 / 5330 / 5335 Copier/Printer/Scanner
Speed		Up to 25 / 30 / 35 ppm	
Duty Cycle		100,000 / 125,000 / 150,000 pages per month	
Paper Handling Paper input	Standard	Duplex Automatic Document Feeder: 110 sheets; Standard sizes: A5 to A3; Custom sizes: 85 x 125 mm to 297 x 432 mm	
		Bypass Tray: 50 sheets; Custom sizes: 89 x 98 mm to 297 x 432 mm	
	Choose one	Trays 1 and 2 with Stand: 520 sheets each; Sizes: Custom sizes: 140 x 182 mm to 297 x 432 mm High-Capacity Tandem Tray: 2,000 sheets; Standard Sizes: A4 or B5	
	Optional	High-Capacity Feeder*: 2,000 sheets; Standard Sizes: A4 or B5	
		Envelope Tray: Up to 60 envelopes: DL, C5, Custom sizes: 98 x 148 mm to 162 x 241 mm	
Paper output	Standard	Dual Catch Tray: 250-sheets each; Lower tray offsets	
	Optional	Integrated Office Finisher: 500-sheet stacker, 50 sheets stapled, single-position stapling	
		Office Finisher LX: 2,000-sheet stacker, 50 sheets stapled, 3-position stapling, optional hole-punch, optional booklet maker (score, saddle stitch)	
Automatic two-sided		Standard	
Copy First-page-out-time		WorkCentre 5325/5330: As fast as 4.2 seconds; WorkCentre 5335: As fast as 4.0 seconds	
Resolution (max)		600 x 600 dpi	
Memory		1 GB plus 160 GB hard drive	1 GB plus 160 GB hard drive / 2 GB with optional Postscript Kit
Copy features		Automatic two-sided, Electronic pre-collation, Automatic tray selection, Build Job, Negative/Mirror image, Automatic booklet creation, Multi-up, Auto RE, Mixed-size originals, Covers insertion, Sample set, Book copying, Annotation, Poster mode, Watermarks, ID Card Copy	
Print First-page-out-time		Optional	As fast as 11.0 seconds
Resolution (max)			1200 x 1200 dpi
Connectivity			10/100/1000Base-TX Ethernet, High-Speed USB 2.0 direct print, Wireless Ethernet 802.11b (via third-party adapters)
Page description languages			PDF, XPS®, PCL® 6 emulation, HP-GL2 (direct submission), Optional Adobe® PostScript® 3™
Print features			Automatic two-sided, Secure print, Delay print, Sample set, Booklet creation, Cover selection, Paper selection by attribute, N-up, Watermarks, Banner sheets, Fit to new paper size, Output tray selection
Scan	Standard	Optional	Colour Scan to Email, Scan to Folder, Scan to USB
	Optional		Network Scan, Text searchable PDF, PDF/A, XPS, MRC compression, Thumbnail Preview, Scan to PC Desktop®, Various Xerox Alliance Partner Solutions
Fax Kit		Optional	Walkup PSTN fax (one-line and three-line options) with Internet fax, Fax over IP (T.38) Kit, Network Server Fax Enablement Kit, LAN Fax via driver, Fax Forward, Two-sided Send and Receive, Print on fax up to A3, Fax Build Job
Accounting	Standard	Auditron	Auditron, Xerox Standard Accounting (Copy, Print, Fax, Scan)
	Optional	N/A	Network Accounting Enablement Kit (Various Xerox Alliance Partner Solutions)
Security	Standard	256-bit Hard Disk Encryption, Image Overwrite	Secure Print, Authentication with LDAP/Kerberos/SMB/CAC (Copier/Printer/Scanner only), Password Protected PDF, S/MIME Encrypted Email, IPsec, 802.1X, SNMP v3.0, Email over SSL, LDAP over SSL, Image Overwrite, 256-bit Hard Disk Encryption, Audit Log
	Optional	N/A	Secure Access Unified ID System
Other Options		Foreign Device Interface, Work Surface, Convenience Stapler (staples 50 sheets), Unicode Kit	

* requires High Capacity Tandem Tray



For more information, visit us at www.xerox.com/office

©2011 Xerox Corporation. All rights reserved. Contents of this publication may not be reproduced in any form without permission of Xerox Corporation. XEROX® and XEROX and Design® are trademarks of Xerox Corporation in the United States and/or other countries. As an ENERGY STAR® partner, Xerox Corporation has determined that this product meets the ENERGY STAR guidelines for energy efficiency. ENERGY STAR and the ENERGY STAR mark are registered U.S. marks. All other trademarks are the property of their respective manufacturers. The information in this brochure is subject to change without notice. 10/11

WSBBR-01EA

