



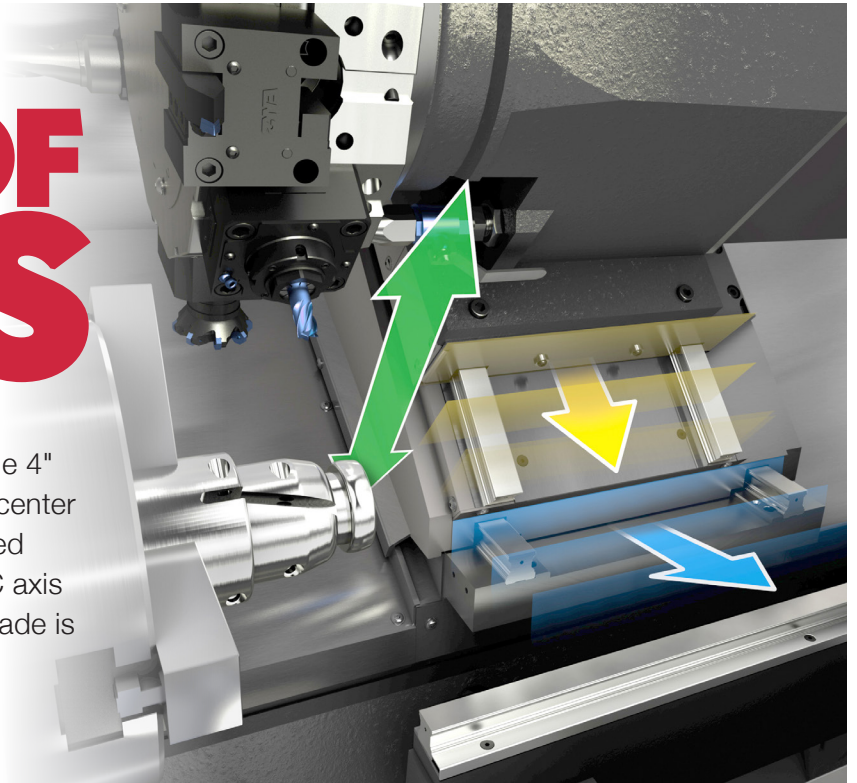
 **Haas**  
F1 Team  
OFFICIAL MACHINE TOOL

ES  
X  
A  
Y

# COMPLETE Y-AXIS TURNING



# THE POWER OF Y-AXIS



The Haas ST Series Y-axis turning centers provide 4" of Y-axis travel ( $\pm 2"$  from the centerline) for off-center milling, drilling, and tapping, and come equipped with 4000-rpm live tooling, and a synchronized C axis for versatile 4-axis capability. A 6000-rpm upgrade is available for the live tooling.

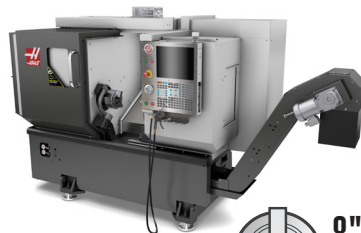
The combined motion of the X-Axis (yellow) and the Y'-Axis (blue) creates the Y-Axis motion (green).

## AVAILABLE Y-AXIS MODELS:



### ST-10Y

12" x 16" (max cap)  
 $\varnothing$  1.75" Bar  
 Sub-spindle available\*



### ST-15Y

12" x 16" (max cap)  
 $\varnothing$  2.5" Bar  
 Sub-spindle available\*



### ST-20Y

10" x 22.5" (max cap)  
 $\varnothing$  2.5" Bar



### ST-25Y

10" x 22.5" (max cap)  
 $\varnothing$  3.0" Bar



### ST-30Y

18" x 23" (max cap)  
 $\varnothing$  3.0" Bar



### ST-35Y

18" x 23" (max cap)  
 $\varnothing$  4.0" Bar



Haas Automation, Inc.  
 Complete Y-Axis Turning

\* U.S., Canada, Mexico, and the UK only.

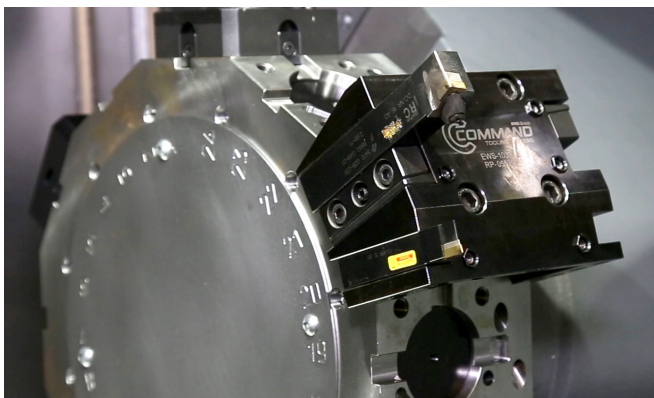
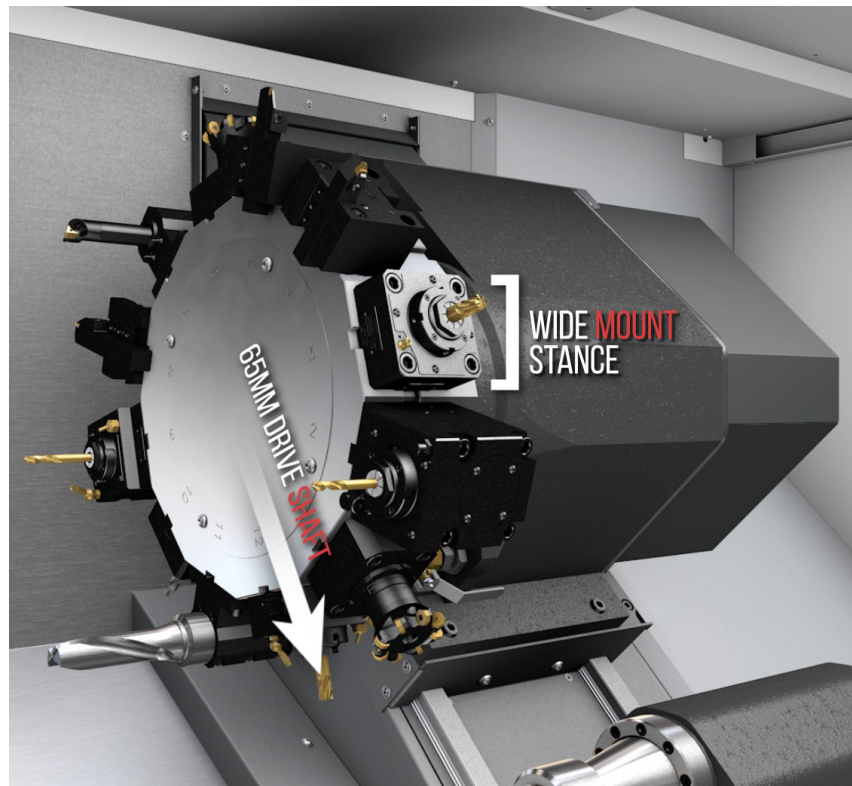


# EXPAND YOUR POSSIBILITIES

Unlock all of your machine's potential.

The 12-station BMT65 turret greatly improves cutting clearances in all Haas Y-axis, done-in-one, CNC turning centers. The BMT-style turret is more rigid, and offers improved cutting performance, thanks to a larger contact area between the tooling, toolholder, and turret. Tool setup is much faster and more accurate, with a simple, solid, tool-mounting configuration that utilizes locating keys, eliminating the need to indicate-in the toolholder.

The BMT65 turret accepts industry-standard driven tools, and offers a half-index option that allows up to 24 tools. The BMT turret is ideal for both static and driven tooling.

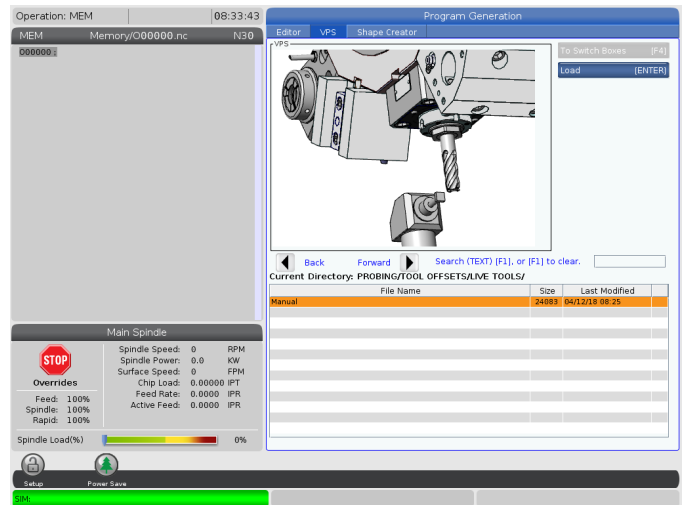
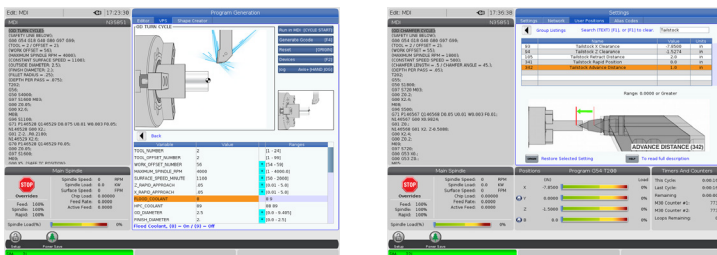


# DOUBLE YOUR TOOL CAPACITY

The BMT65 turret offers a half-station indexing option that increases your available tool stations to 24, with 12 of those stations able to accept driven tools. The turret looks the same, but will index every 15 degrees, rather than every 30 degrees. Special static toolholders are included with this option.

## VISUAL PROGRAMMING SYSTEM

The Haas Visual Programming System uses graphical templates and a form-like interface to help you quickly create G-code programs for not only basic part features, but also more complex operations, like Y-axis milling/drilling, probing, and more. Simply define the feature in the template, and VPS then outputs working G-code at the touch of a button. VPS also includes a custom template generator, so you can create templates for your own part features or frequently used programs.



Specifications subject to change without notice. Machines shown with optional equipment. Product appearance may differ. Not responsible for typographical errors.

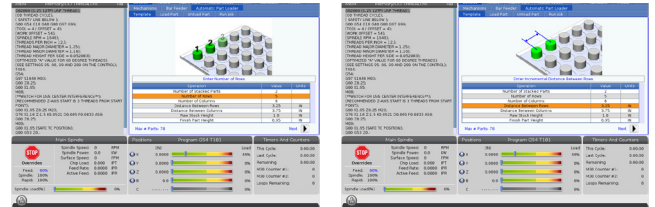
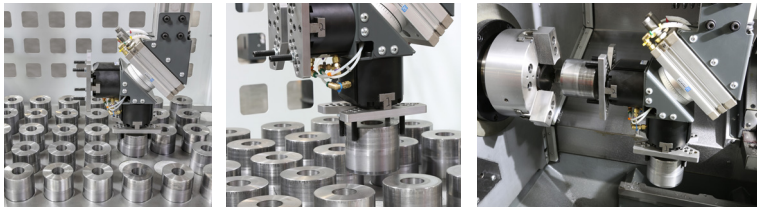
[www.HaasCNC.com](http://www.HaasCNC.com)

# LOADING AND UNLOADING PARTS FOR UNATTENDED MACHINING



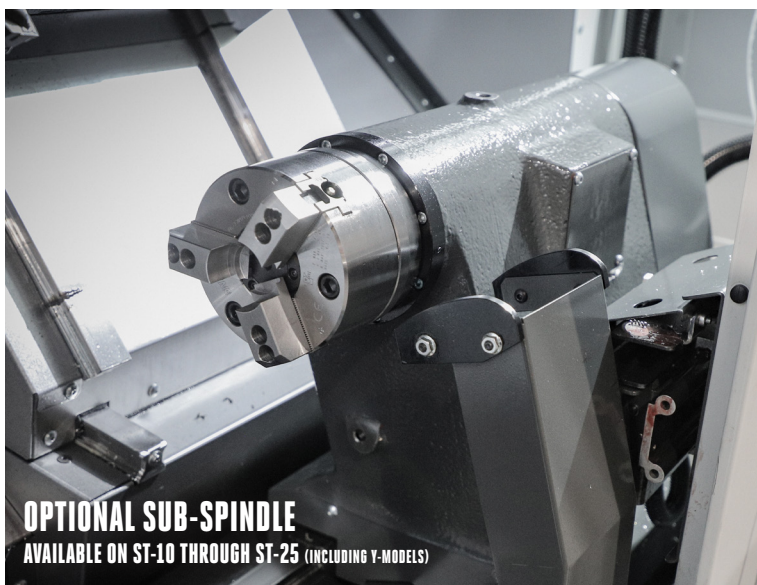
**Our Automatic Parts Loader** is a simple and affordable way to automate part production and boost productivity on Haas turning centers. It is designed and built exclusively for use on ST-10 through ST-25 turning centers, and connects directly to the Haas control.

- **All-inclusive design**, with plug-and-play capabilities
- **Interfaces directly** with the Haas control
- Accommodates parts up to **Ø5.8" x 5" x 10 lb**
- Includes light curtain for safe operation



**APL Part Management** – Part management on the APL table is done using one of three included templates. Various part shapes – such as round, hex, and square – can be loaded, and grippers can be adjusted or modified to best fit your parts.

**Easy-to-Use APL Interface** – Our easy-to-use APL interface uses simple, step-by-step instructions to help the operator “teach” the APL the correct positions for picking up, loading, and unloading parts.



## A2-5 FINISHING SUB-SPINDLE

Our finishing sub-spindle will not only make you more productive, but also will provide new options for finishing the 2nd-op side of your parts.

This affordable A2-5 spindle is equipped with a 5.3" hydraulic chuck, and will fully synchronize with the main spindle to provide effortless “in-cycle” part handoff. This allows you to finish both sides of your part in a single setup – simply load your raw workpiece, and the next time you open the door, you’ll have a finished part. A built-in part ejector propels the finished part into the optional parts catcher for automated operation.

Note: Not compatible with the tailstock option.

- 6000 rpm
- A2-5 spindle nose
- 5.3" hydraulic chuck
- 1.3" spindle bore (non through)
- Allows fully synchronized part pass-off
- Built-in part ejector
- Includes CNC Control Cabinet Cooler

Haas  
Fi Team  
OFFICIAL MACHINE TOOL



Haas Automation, Inc. | [www.HaasCNC.com](http://www.HaasCNC.com) | 800-331-6746 | Made in U.S.A.

Specifications subject to change without notice. Not responsible for typographical errors. Machines shown with optional equipment. Actual product appearance may differ. Pricing subject to change without notice.